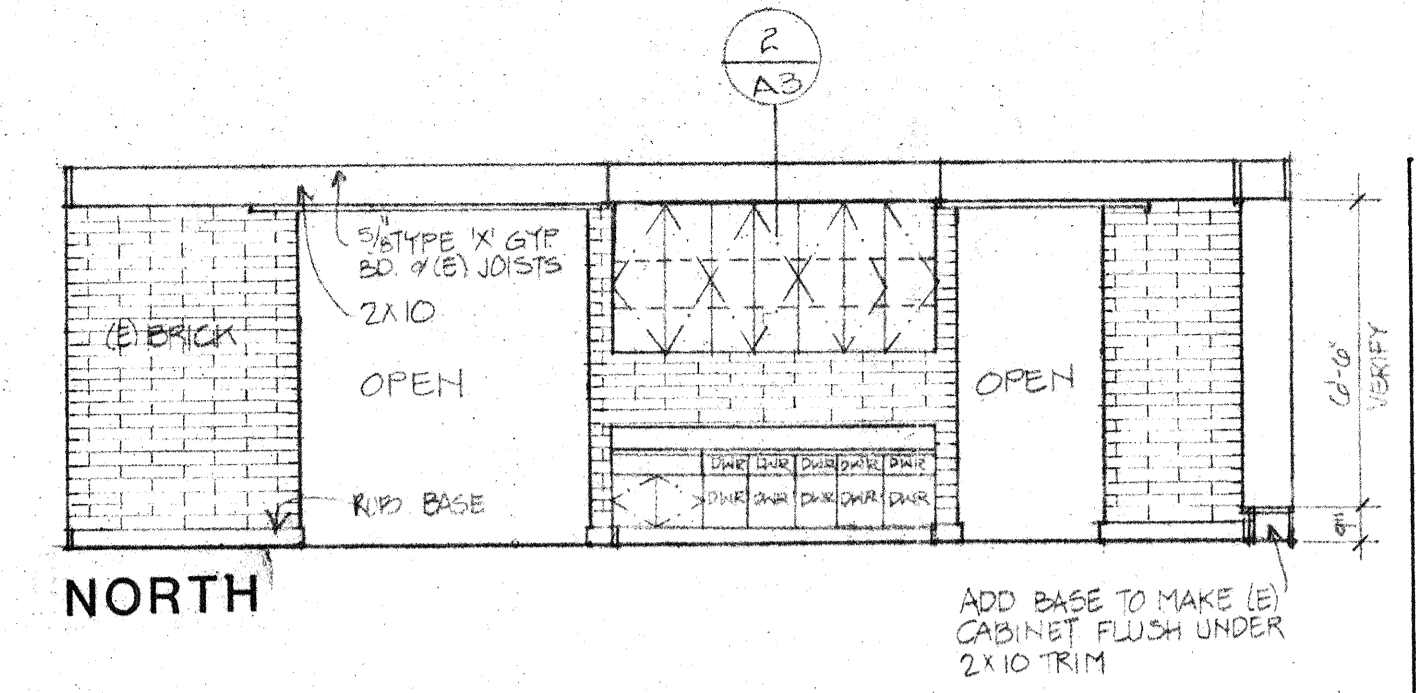
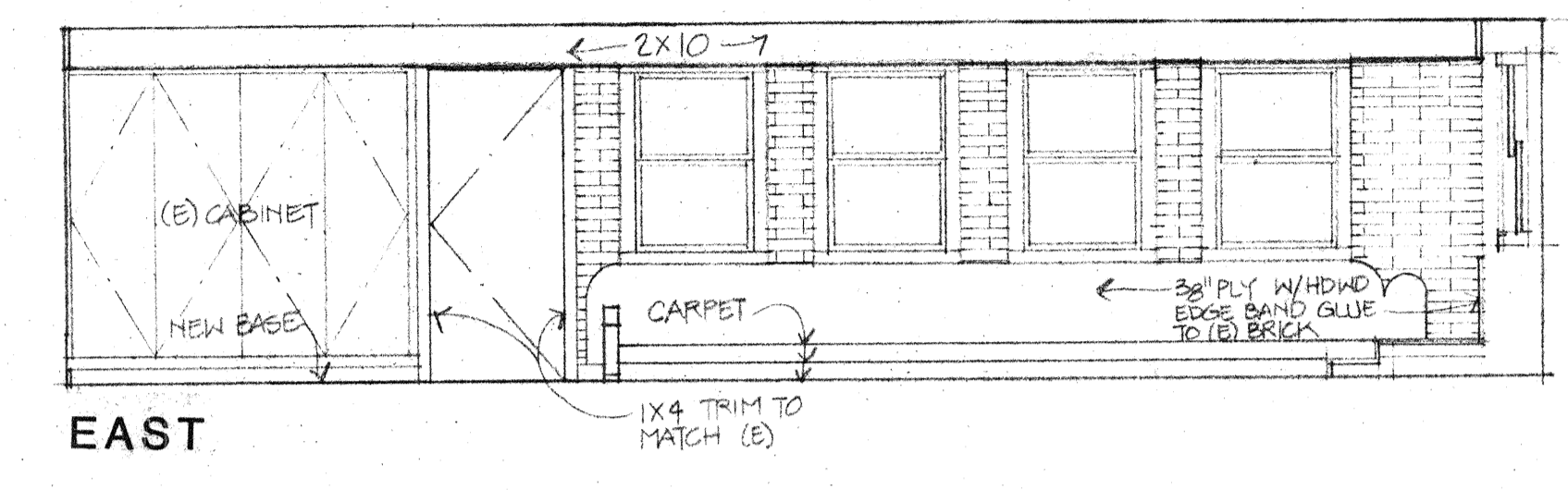


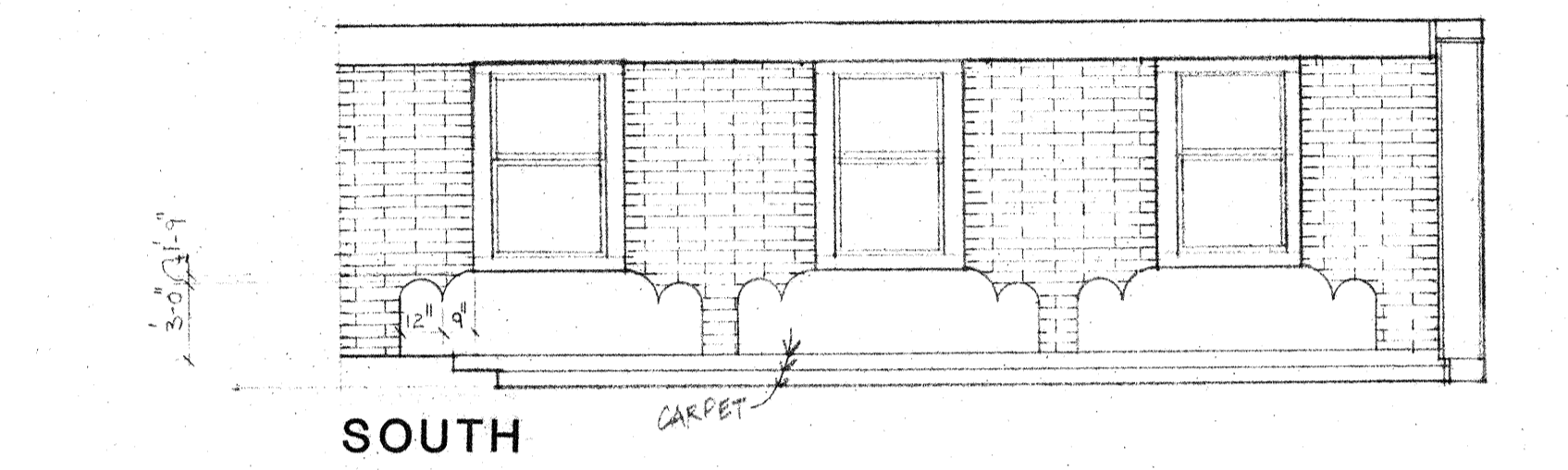
SECTION A THROUGH CLASSROOM C, DINING AND CLASSROOM A



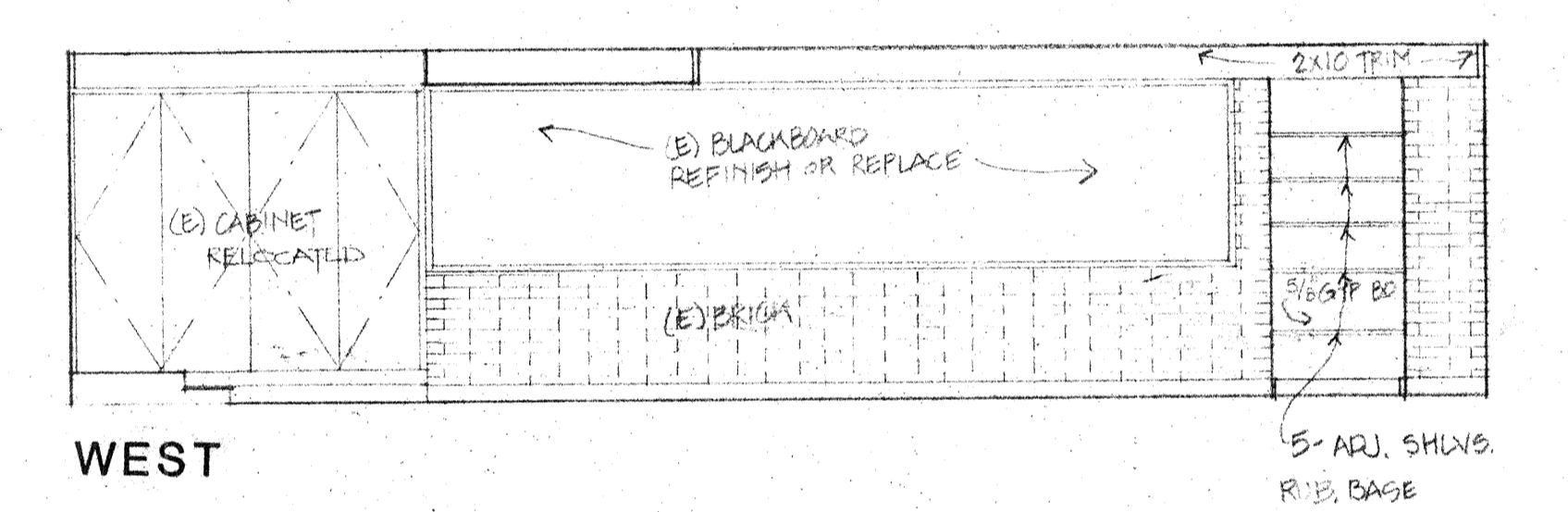
NORTH



EAST

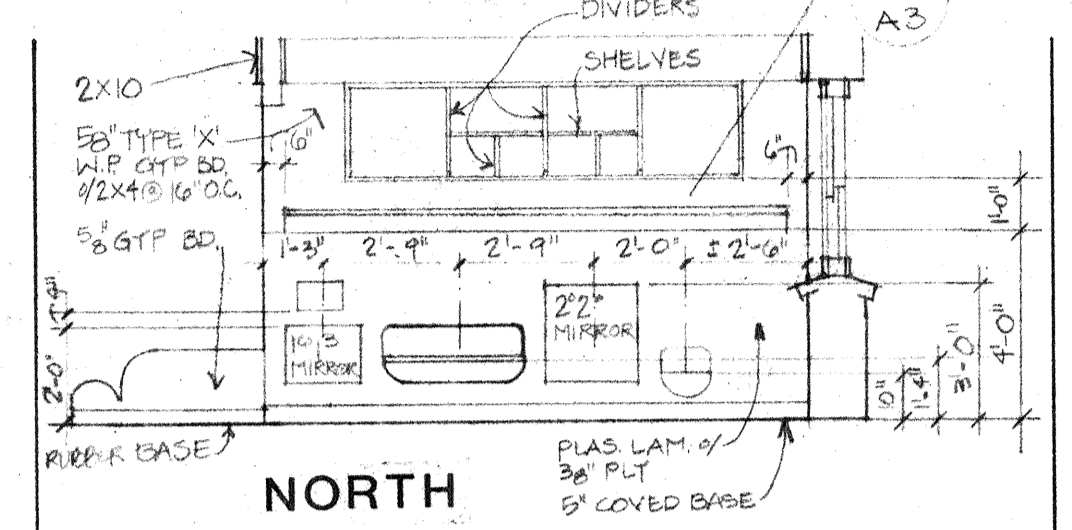


SOUTH

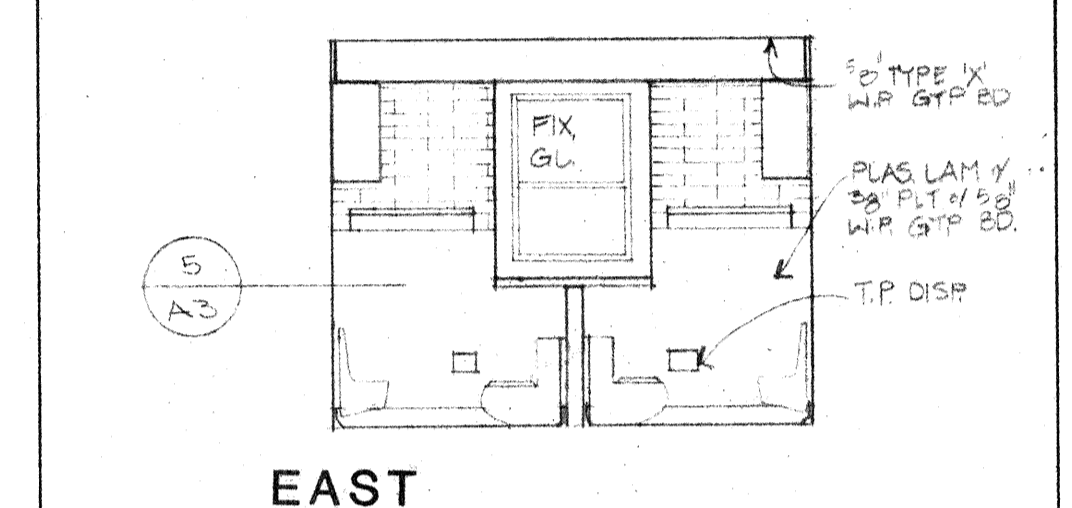


WEST

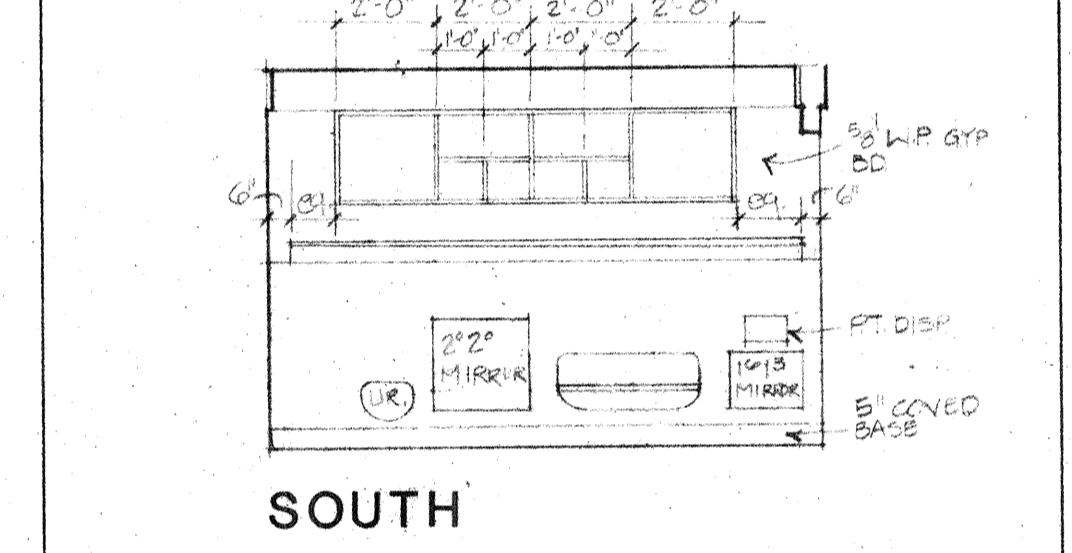
CLASSROOM D



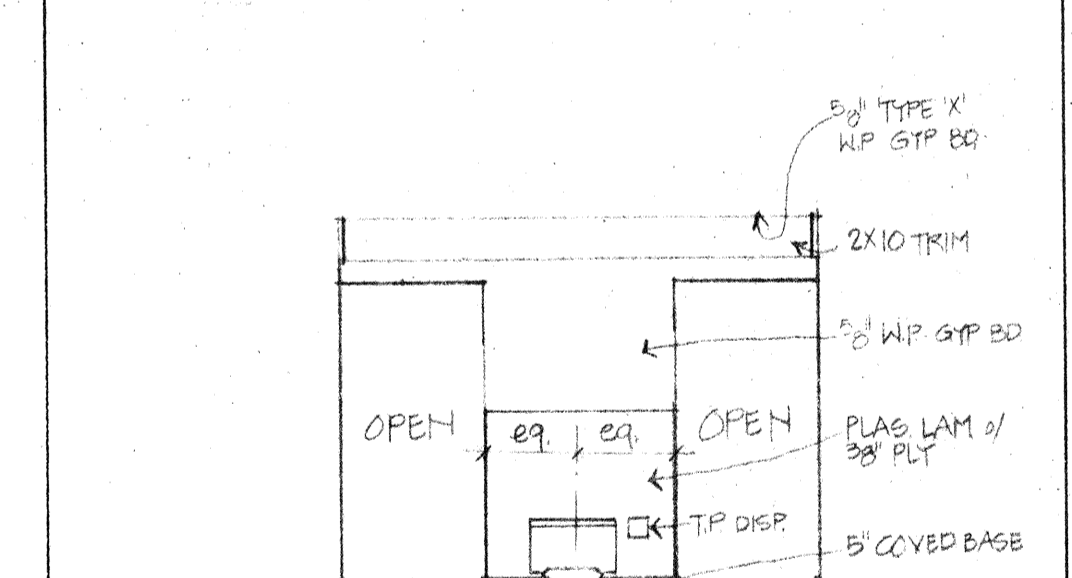
NORTH



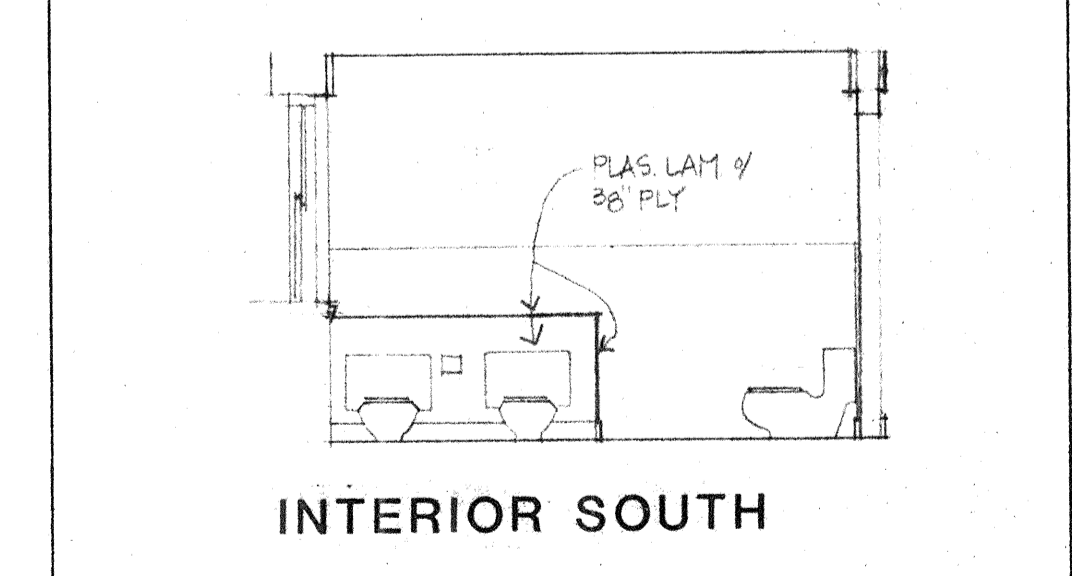
EAST



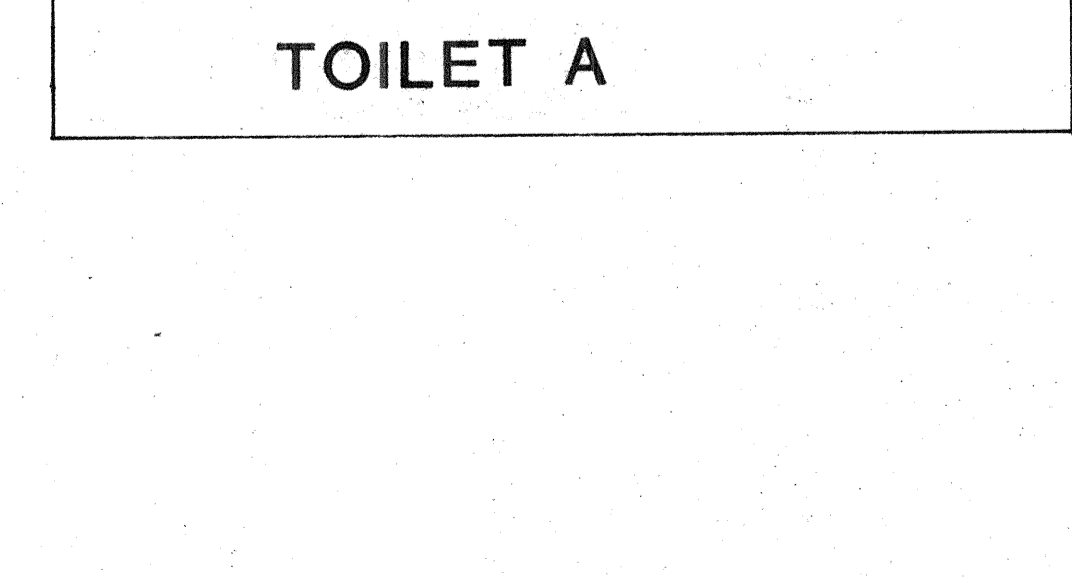
SOUTH



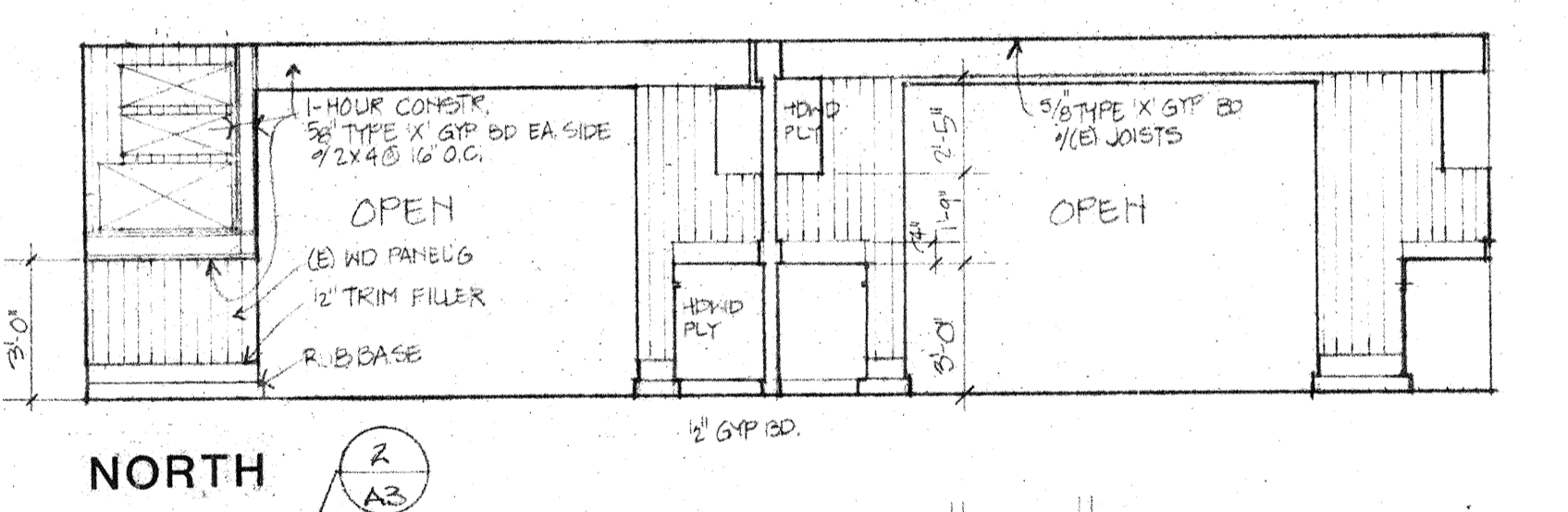
WEST



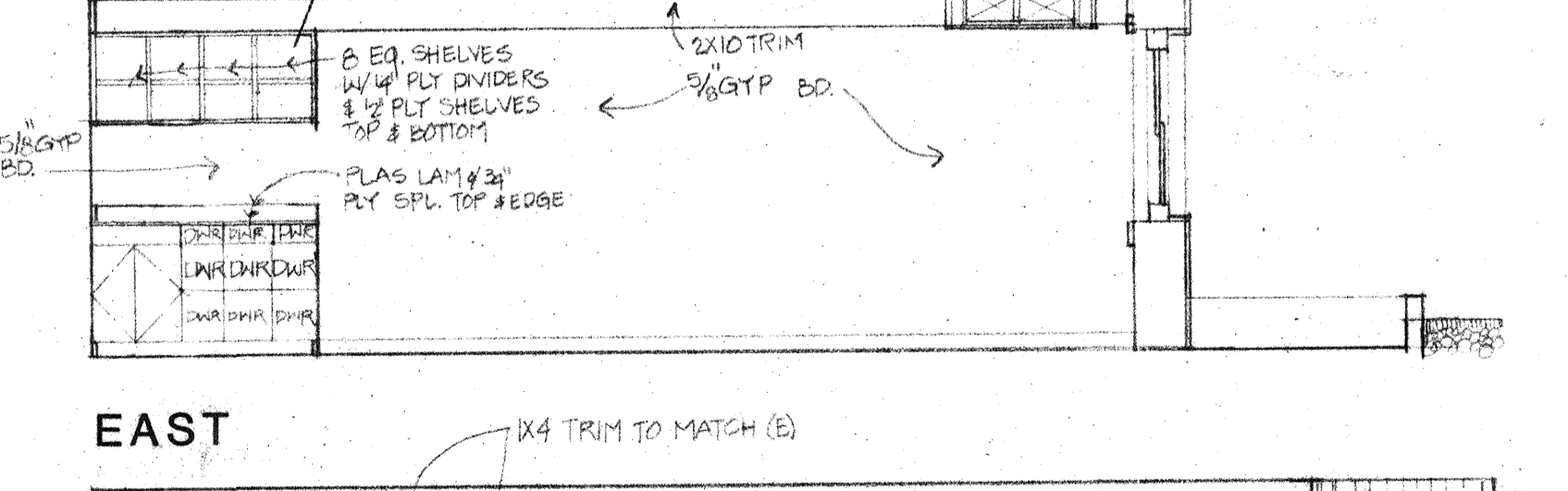
INTERIOR SOUTH



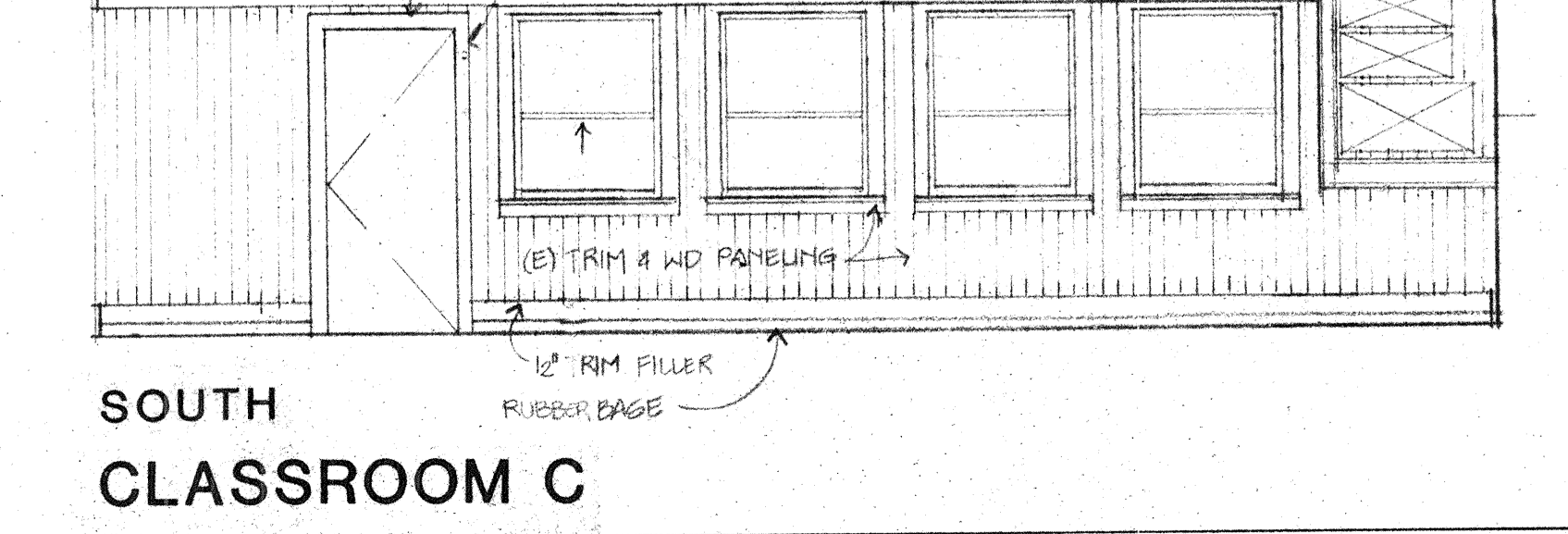
TOILET A



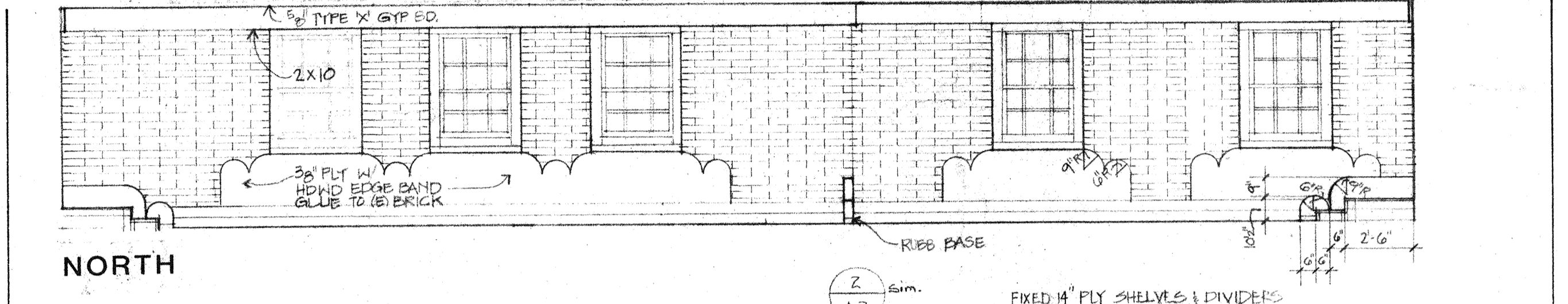
NORTH



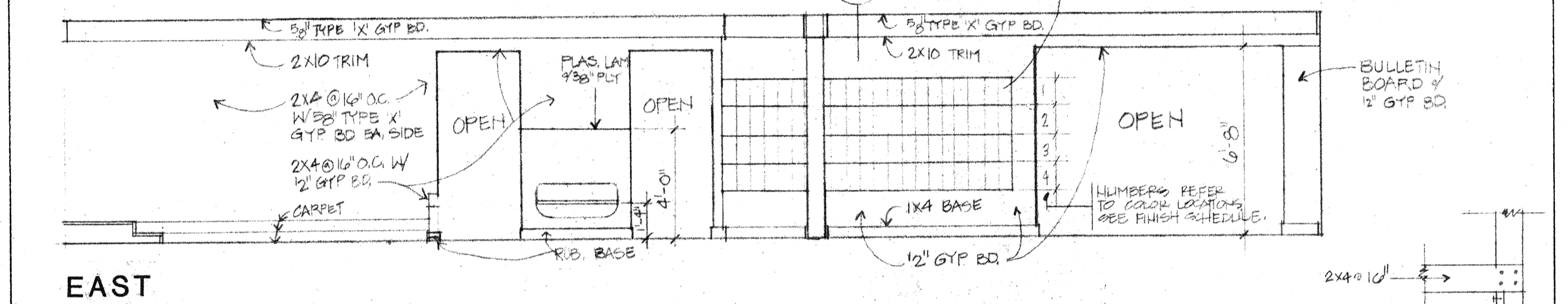
EAST



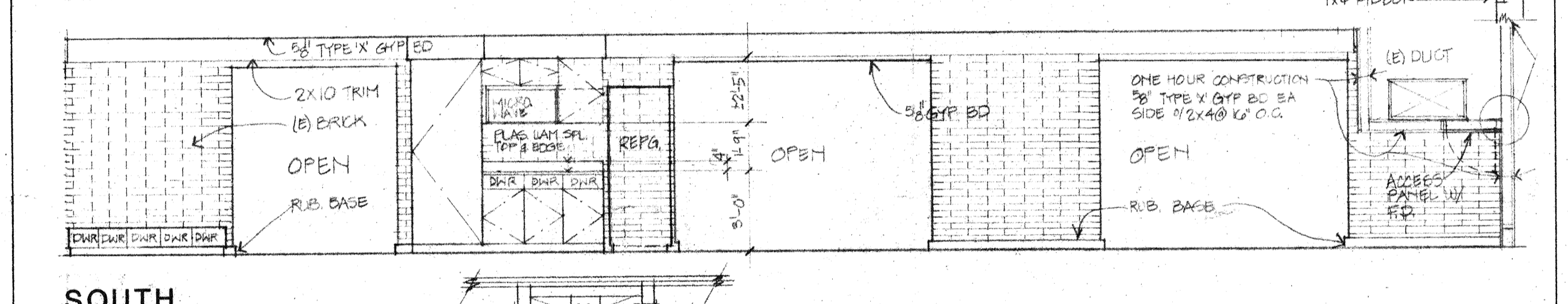
SOUTH CLASSROOM C



NORTH

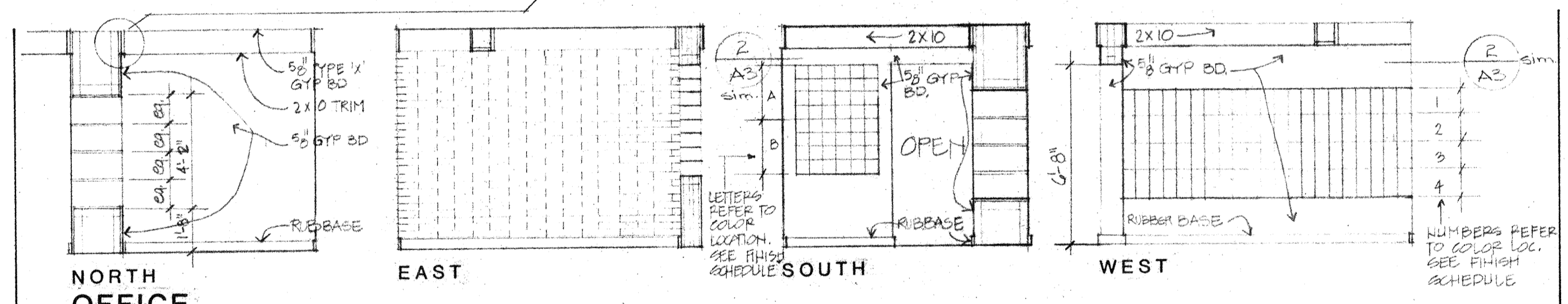


EAST

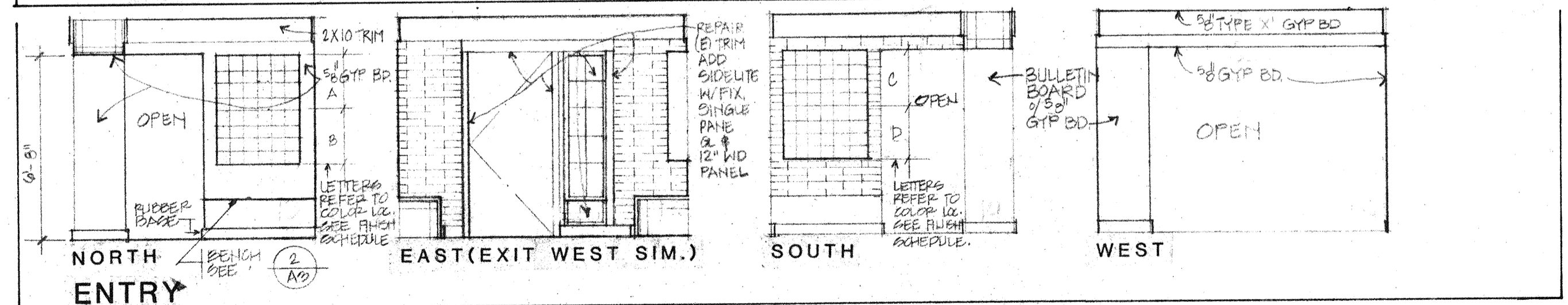


SOUTH

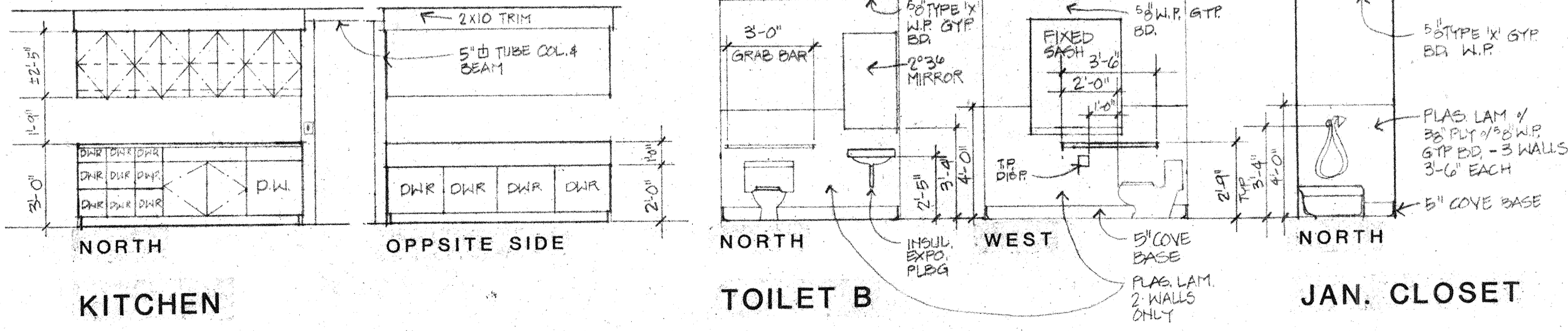
CLASSROOMS A&B



NORTH OFFICE



NORTH ENTRY



KITCHEN

OPPOSITE SIDE

TOILET B

JAN. CLOSET

MOGAVERO
PERKINS
EASTON
ARCHITECTS

811 J STREET
SACRAMENTO, CA. 95814
(916) 443-1033

CONSULTANTS

PROJECT

childCARE
A Facility of
Eskaton Health
Corporation

marshall school
2716 g street
sacramento, ca.
95816

REVISIONS

DRAWING
INTERIOR
ELEVATIONS

DRAWN BY

ace
PROJECT NUMBER

8326

D A T E

6-15-84

SHEET NUMBER

A4

OF 12