

PROJECT

childCARE

A Facility of
Eskaton Health
Corporation

marshall school
2716 g street
sacramento, ca.
95816

REVISIONS

DRAWING

LANDSCAPE
DETAILS

DRAWN BY

PROJECT NUMBER

8326

DATE

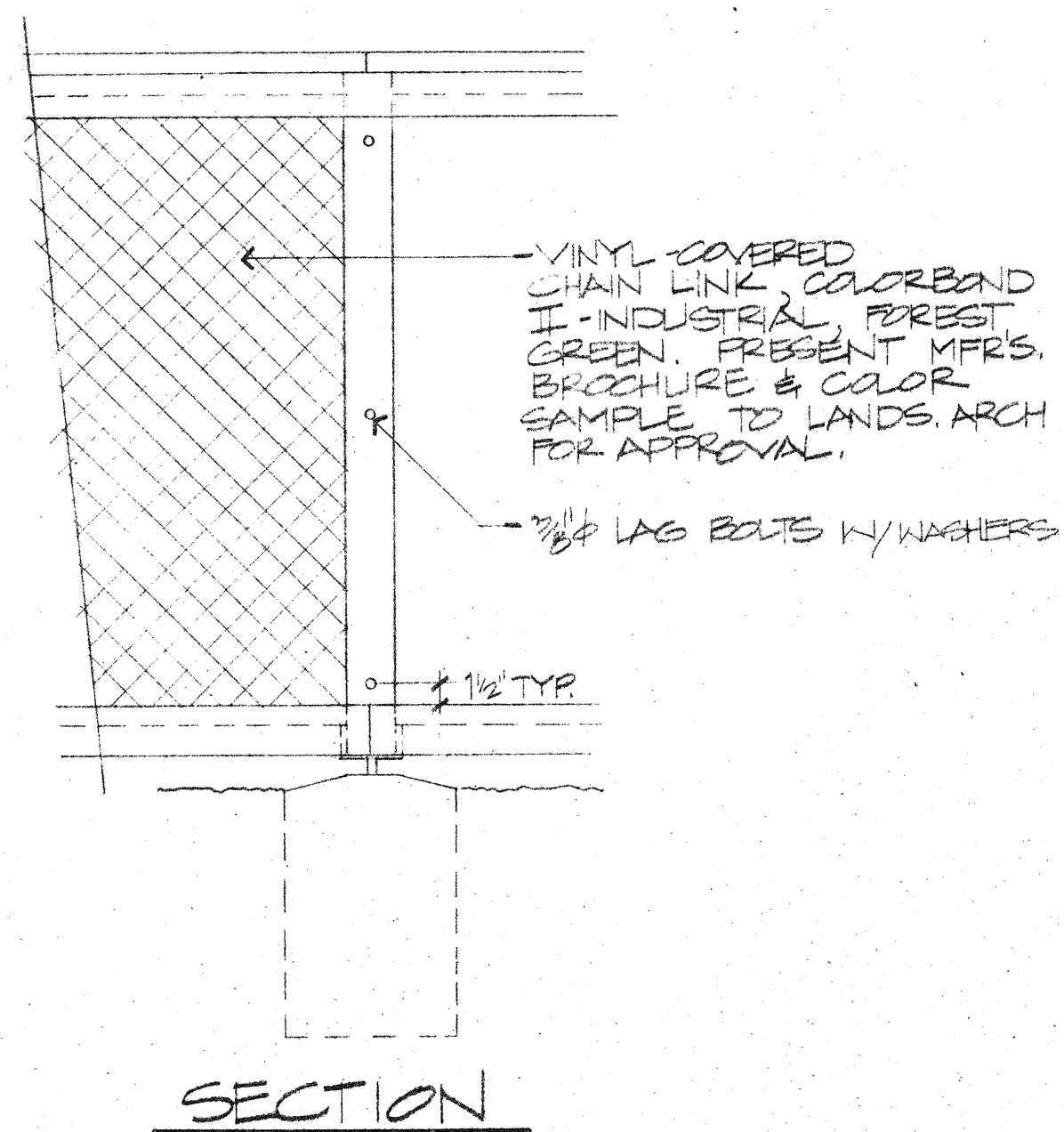
6-15-84

SHEET NUMBER

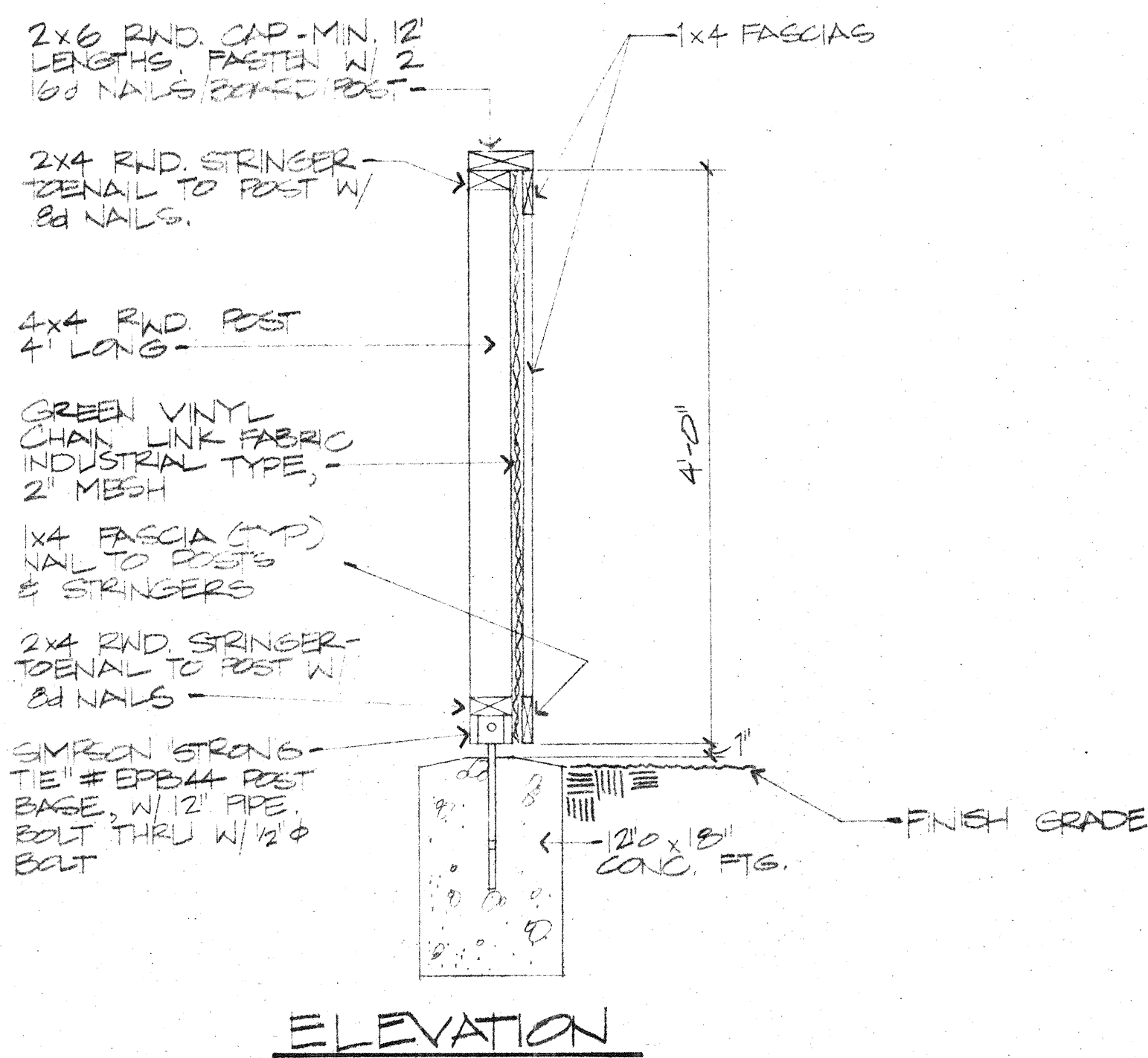
L2

NOTES:

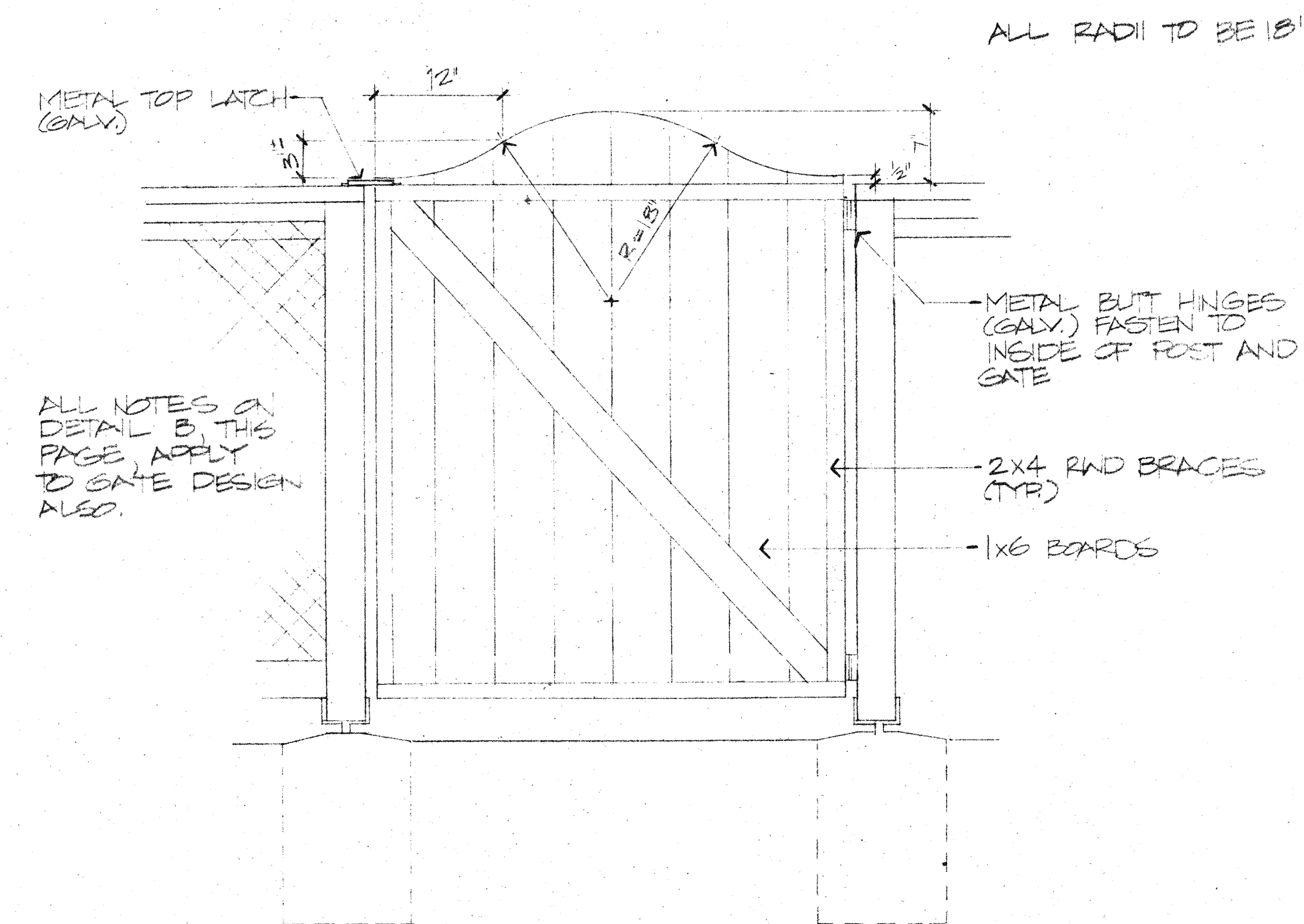
1. ALL HARDWARE AND NAILS SHALL BE HOT DIPPED GALVANIZED.
2. ALL WOOD MEMBERS SHALL BE S4S CON. HRT. REDWOOD. COAT W/ THOMPSON'S WATER SEAL PRIOR TO INSTALLATION.
3. ATTACH CHAIN LINK FABRIC TO WOOD MEMBERS WITH METAL "L" STAPLES.
4. SLOPE TOP OF FOOTING AWAY FROM POSTS, AS SHOWN.



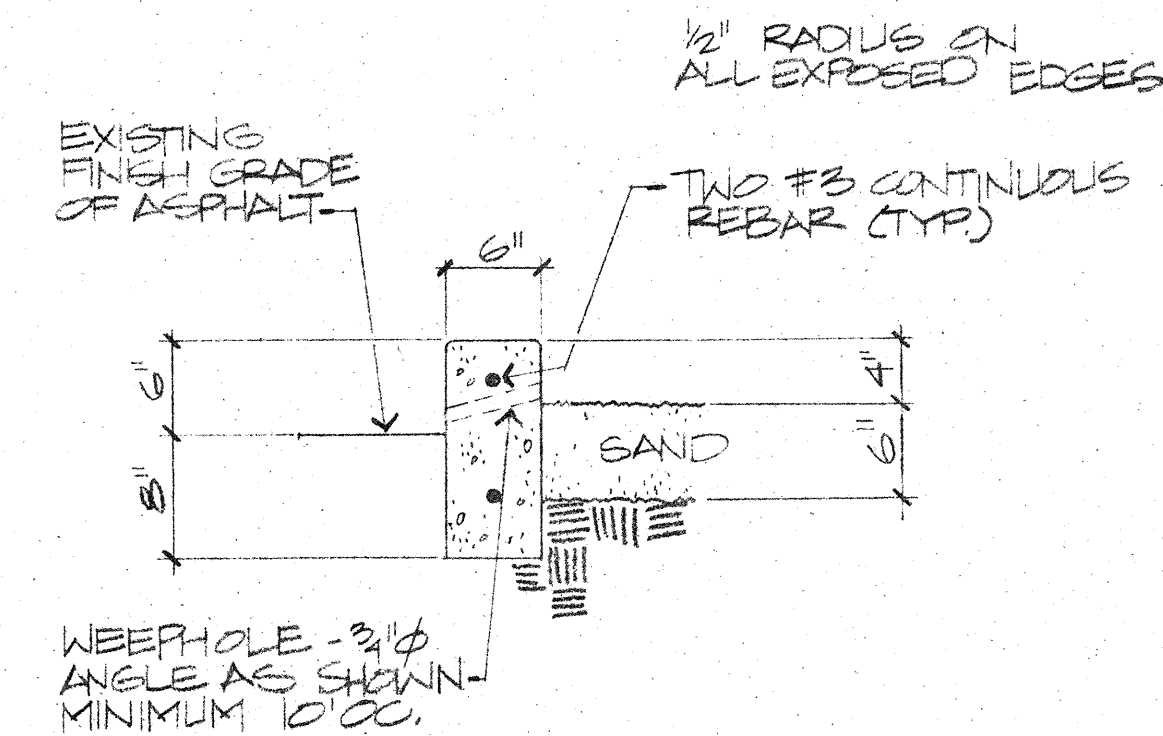
B WOOD AND CHAIN LINK
FENCE DETAIL
1" = 1'-0"



ELEVATION



C GATE DETAIL
INSIDE VIEW
1" = 1'-0"



A CONCRETE CURB DETAIL
AT PLAY AREAS
1" = 1'-0"
(CITY OF SACRAMENTO #15 CURB)