



REMOVE EXISTING SIDEWALK IN SHADED AREA AND REPLACE IN ACCORDANCE WITH CITY OF SACRAMENTO SPECIFICATION

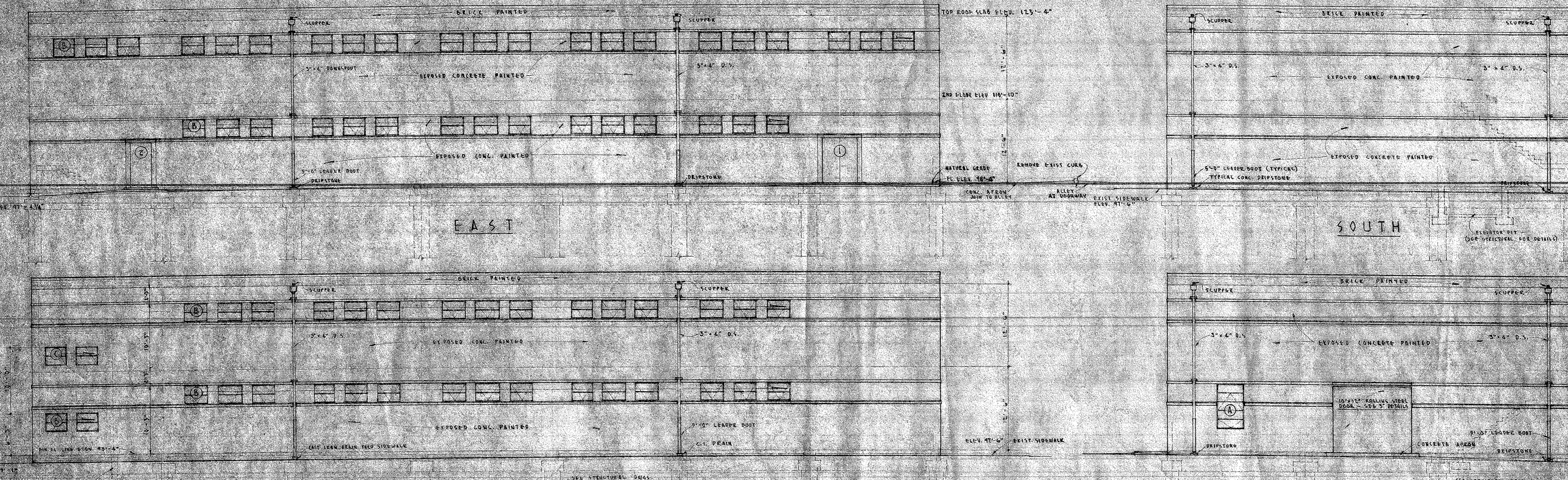
INSTALL NEW CONCRETE ASPHALT IN EXISTING PARKING AREA IN ACCORDANCE WITH CITY OF SACRAMENTO SPECIFICATION

PLOT PLAN

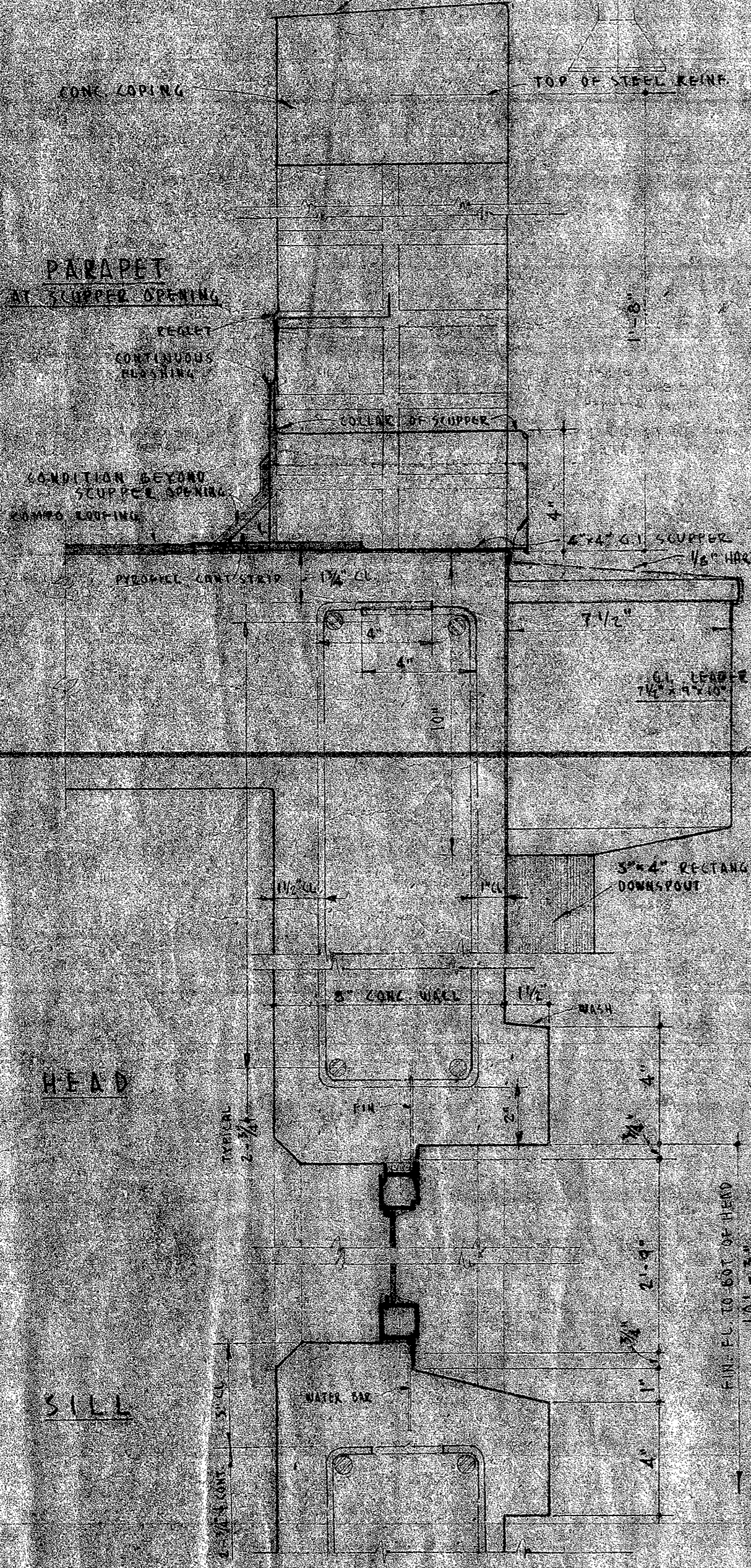
APPROVED
PRESIDENT

Storage Bldg

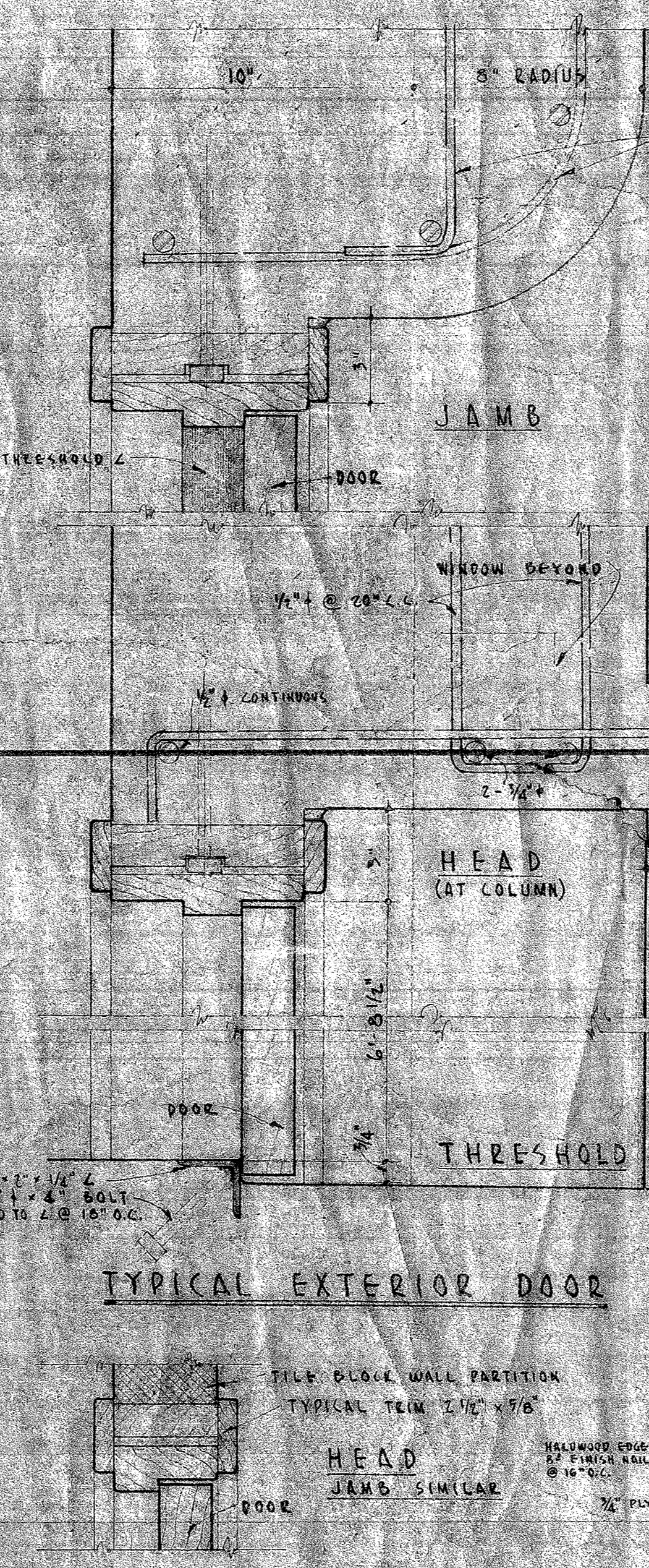
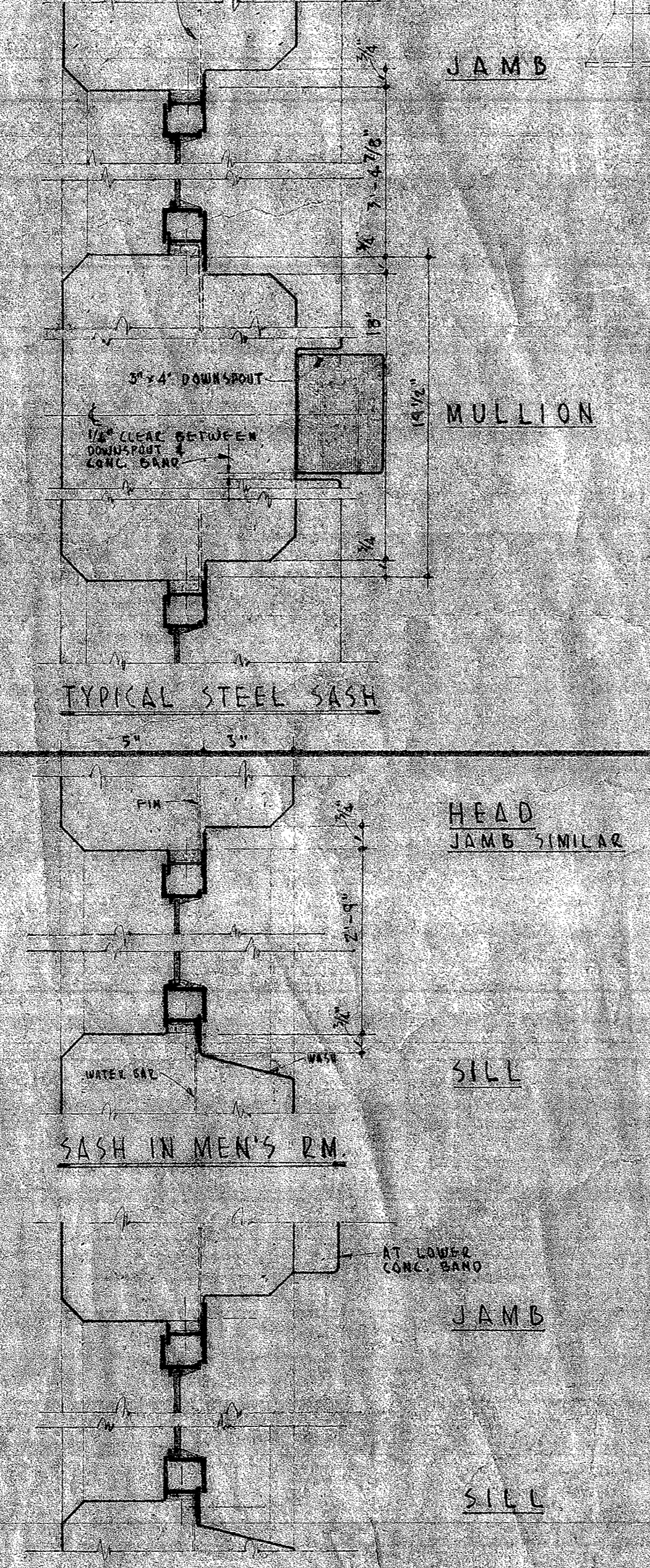
LD



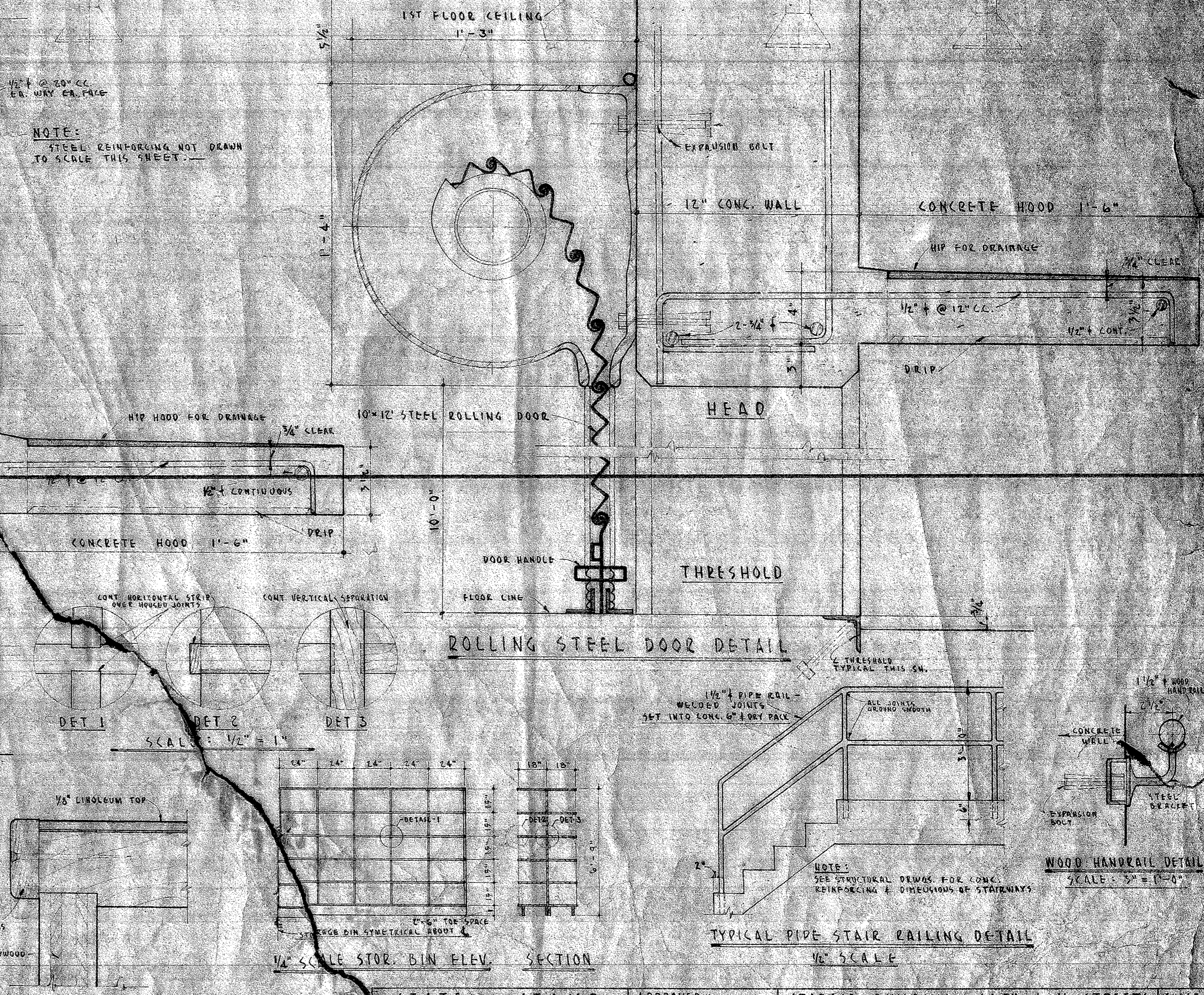
1/8" SCALE EXTERIOR ELEVATIONS



3" SCALE WINDOW & DOOR DETAILS

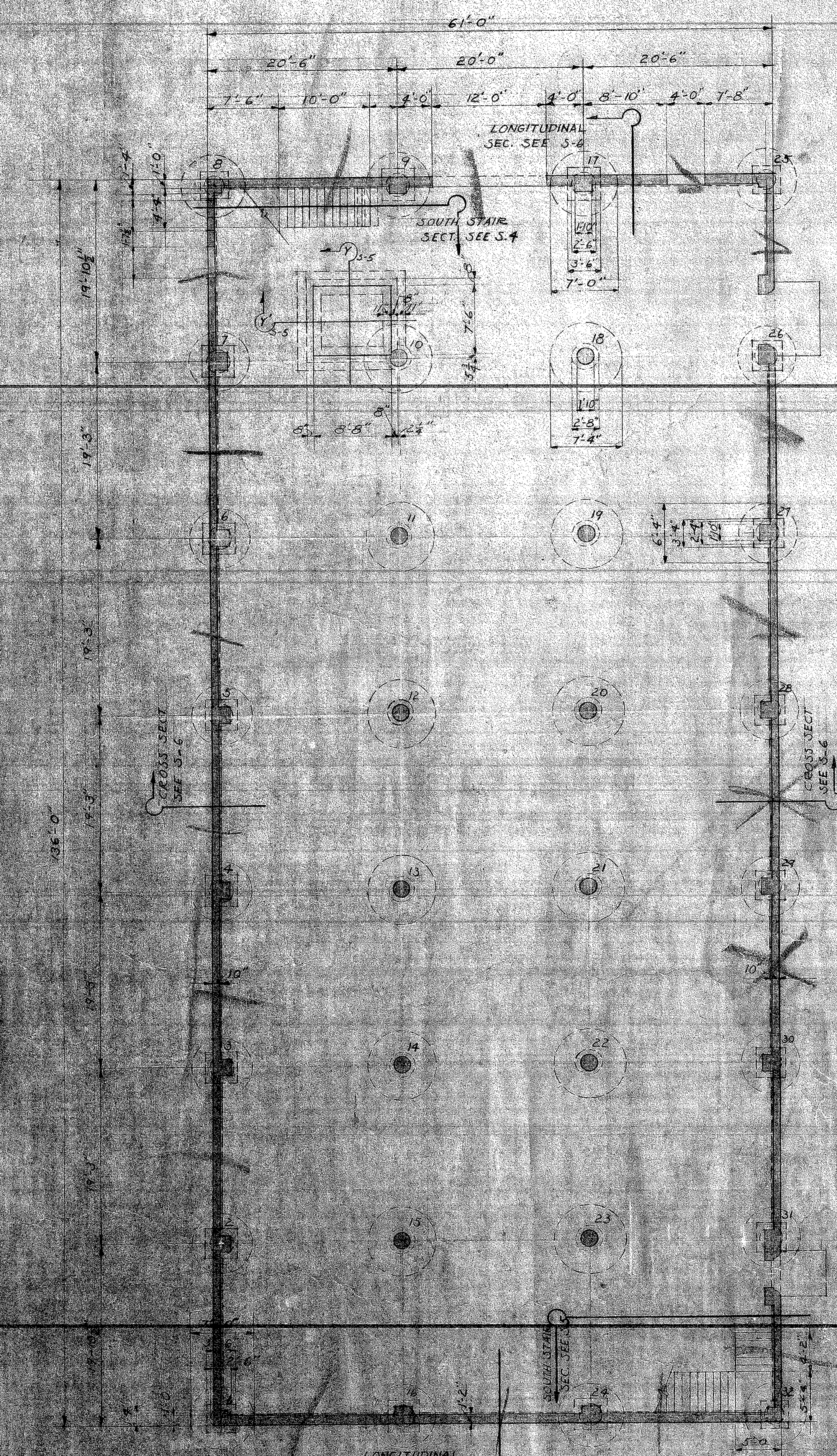


F.S.D. EDGE OF OFFICE COUNTER



TYPICAL PIPE STAIR RAILING DETAIL

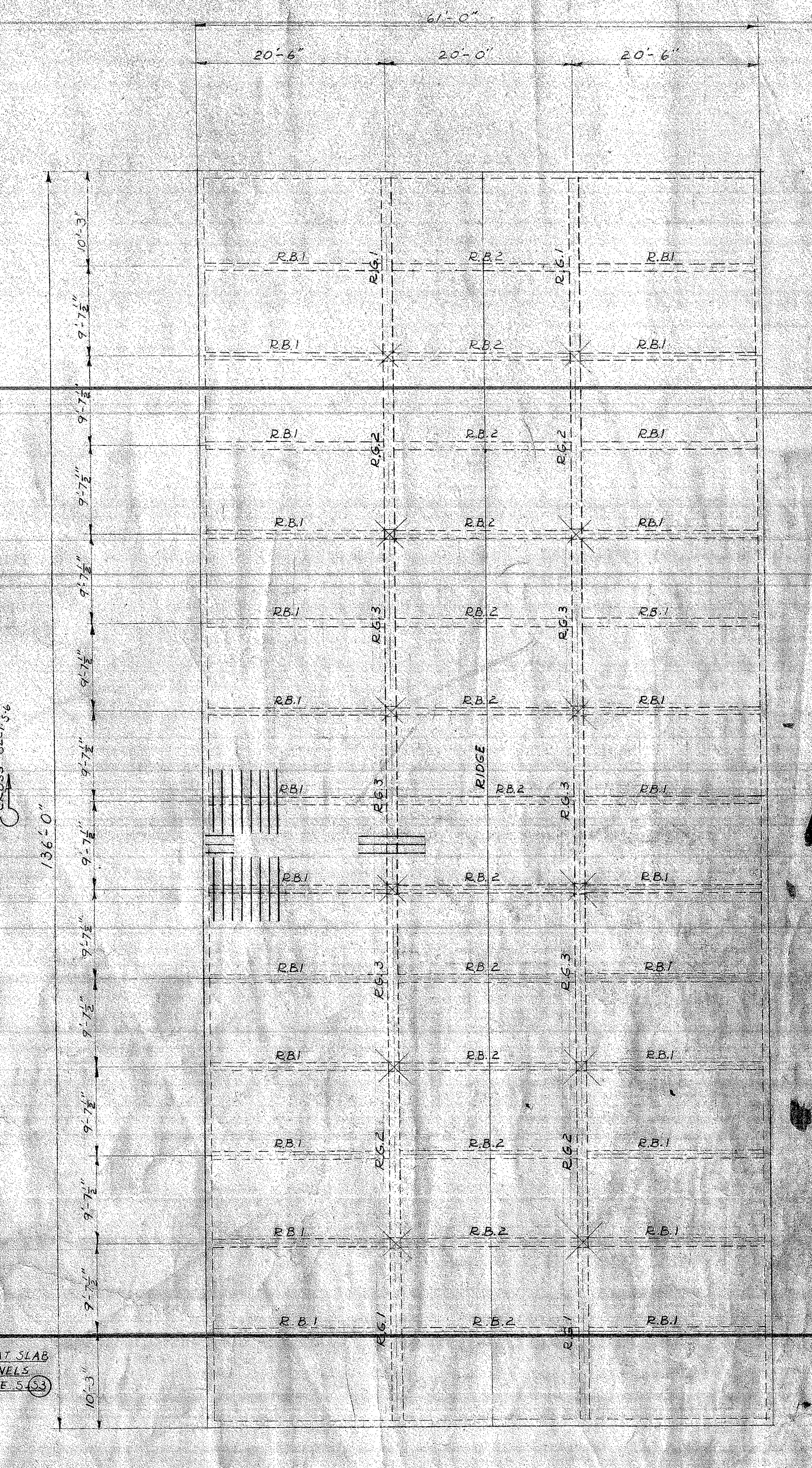
STATE STAMP
 APPROVED: *James H. Dean*
 RESIDENT OF THE BOARD
 STORAGE BUILDING 16TH & N STREETS
 SACRAMENTO CITY UNIFIED SCHOOL DISTRICT
 SACRAMENTO CALIFORNIA
 CHAS. F. DEAN ARCHITECT
 SACRAMENTO CALIFORNIA
 SHEET NO. 2
 DATE 23 JAN 50
 TITLE NO.



FOUNDATION PLAN
SCALE 1/8" = 1'-0"

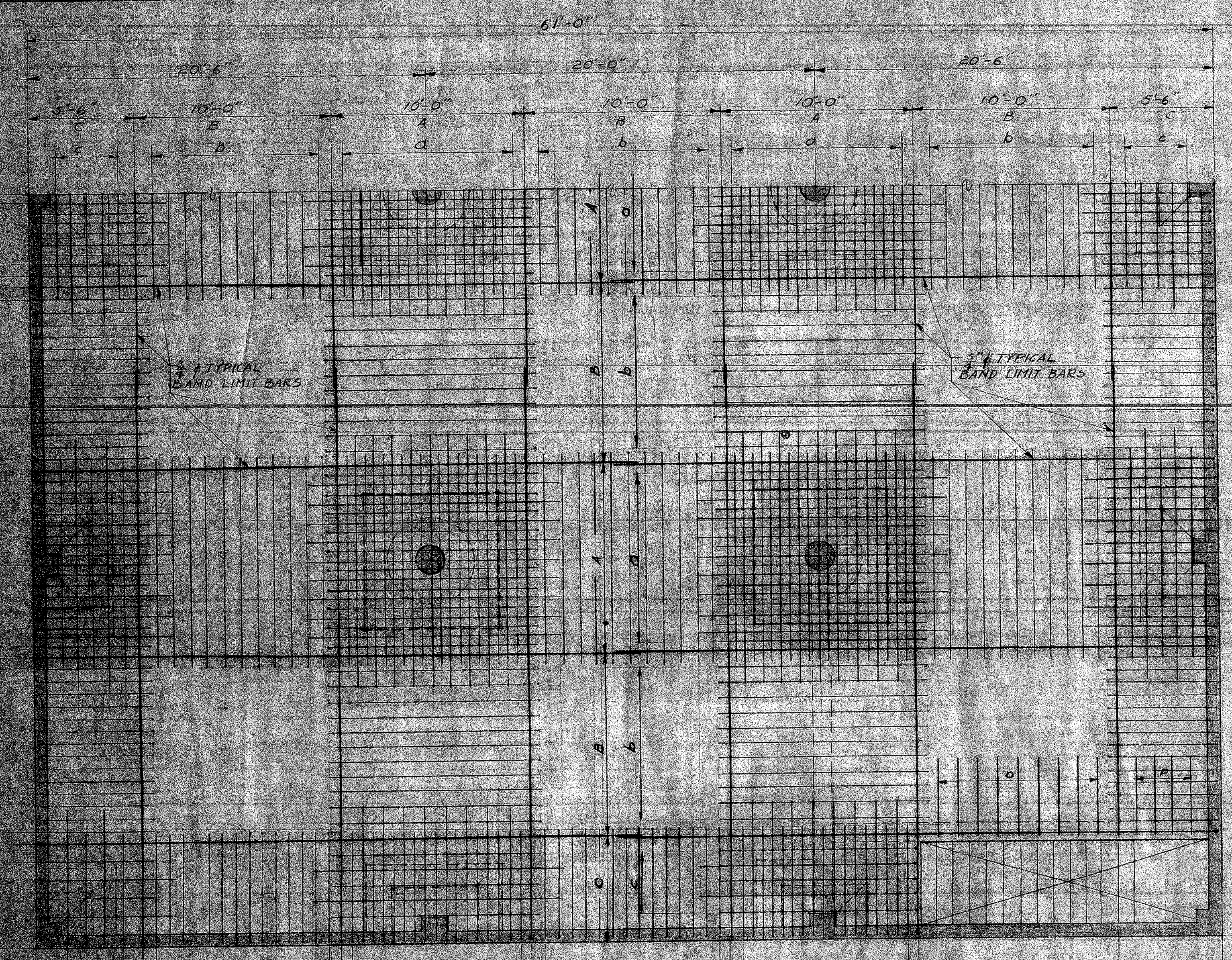


2ND & 3RD FLOOR FRAMING PLAN
SCALE 1/8" = 1'-0"

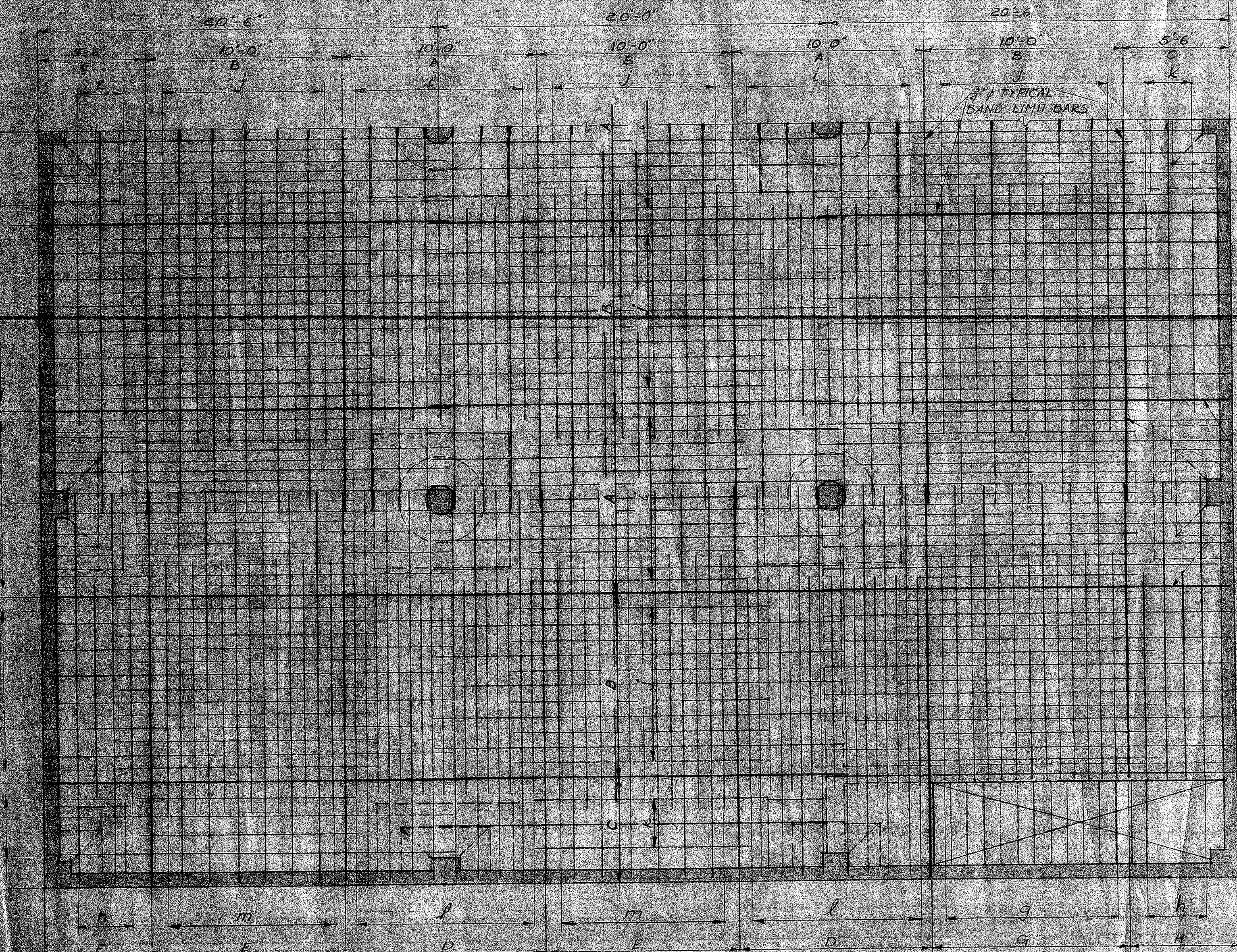


ROOF FRAMING PLAN OF FUTURE ROOF
SCALE 1/8" = 1'-0"

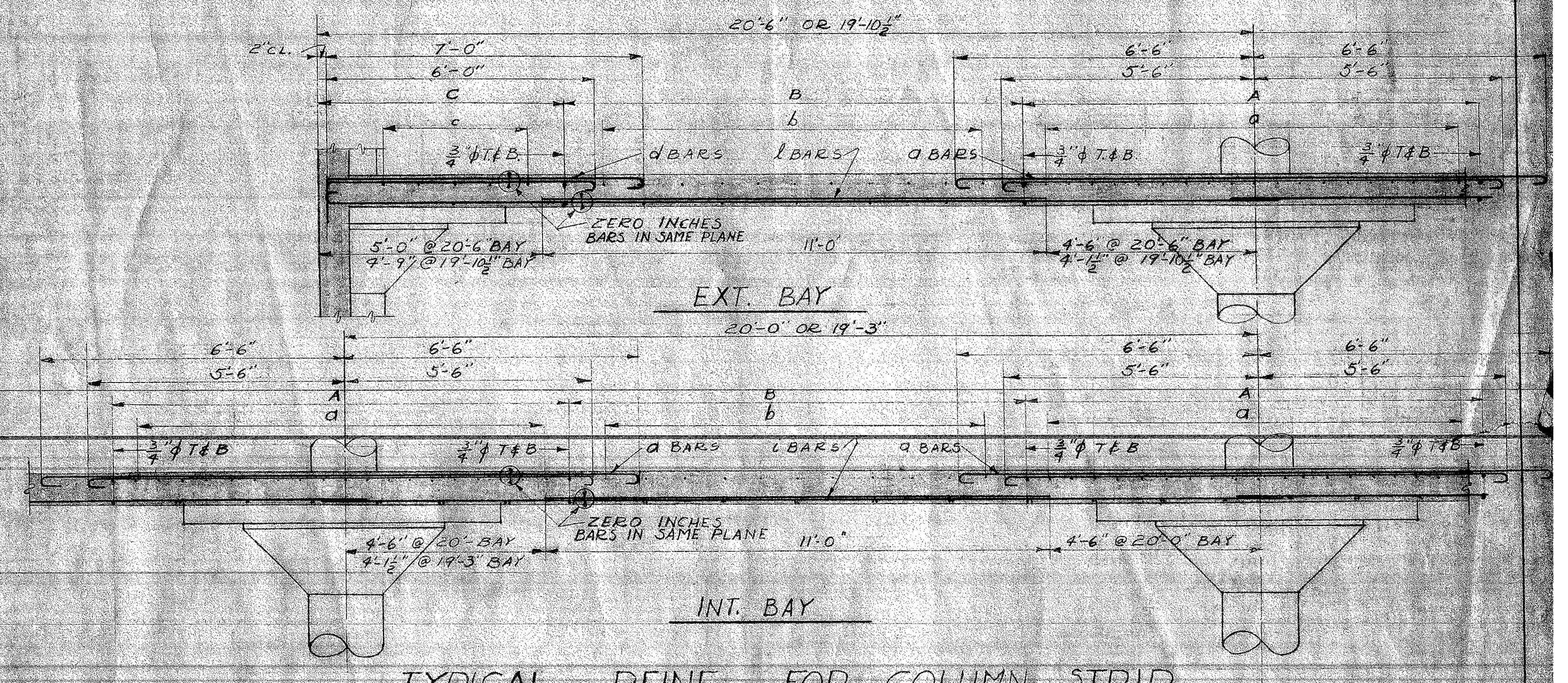
STATE	STAMP	APPROVED:	STORAGE BUILDING	16 TH & N STREETS	SHEET
		<i>James H. Dean</i>	SACRAMENTO CITY UNIFIED SCHOOL DISTRICT		S-1
		PRESIDENT OF THE BOARD	SACRAMENTO	CALIFORNIA	DATE
			CHAS. F. DEAN	ARCHITECT	25 JAN 50
			SACRAMENTO	CALIFORNIA	FILE



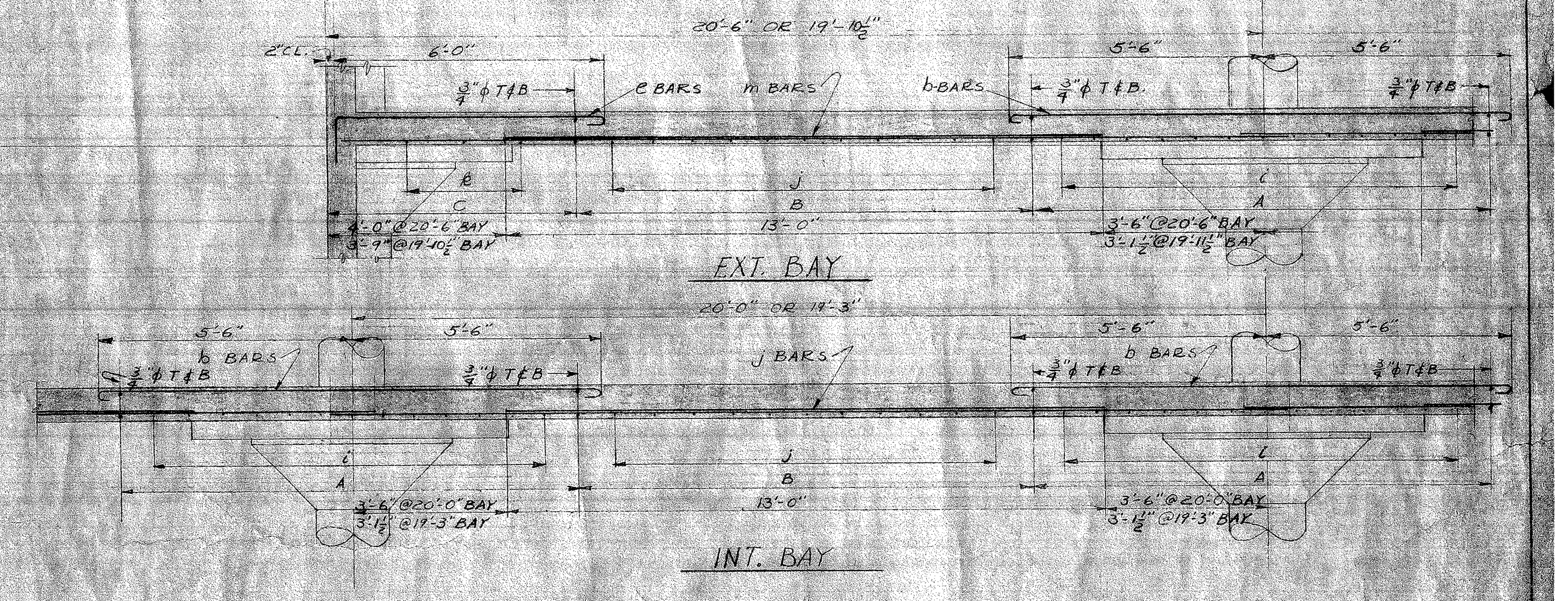
TOP REINF. 2ND & 3RD FL SLABS
SCALE 1/4" = 1'-0"



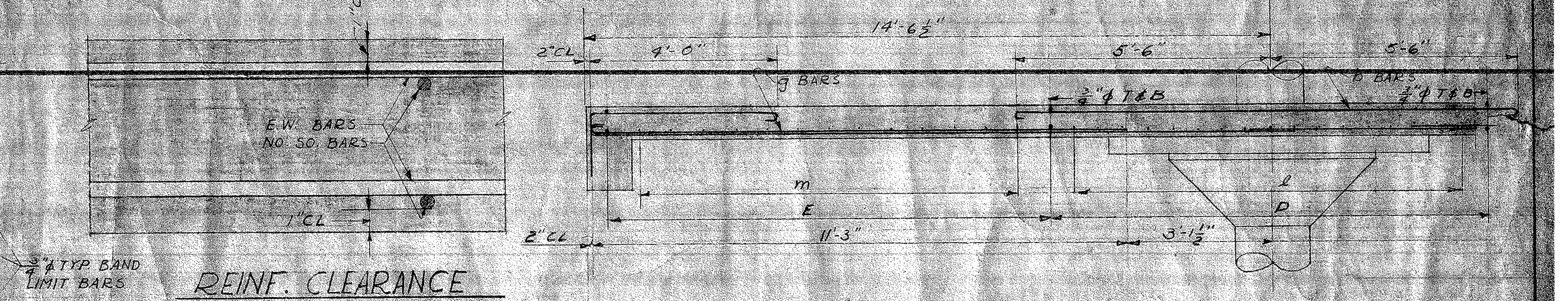
BOTT REINF. 2ND & 3RD FL SLABS
SCALE 1/4" = 1'-0"



TYPICAL REINF. FOR COLUMN STRIP
SECTION DRAWN LOOKING NO. OR SO.
SCALE 1/2" = 1'-0"



TYPICAL REINF. FOR MIDDLE STRIP
SECTION DRAWN LOOKING NO. OR SO.
SCALE 1/2" = 1'-0"



REINF. CLEARANCE
SCALE 3/4" = 1'-0"

REINF. FOR MIDDLE STRIP @ 50% STAIR
SECT. LOOKING WEST
SCALE 1/2" = 1'-0"

REINFORCEMENT SCHEDULE							
TOP BARS				BOTTOM BARS			
BAND	MR.	NO.	SIZE	LGT.	MR.	NO.	SIZE
A	d	10	#4	11'-0"	l	1	#4
B	b	11	#4	11'-0"	j	6	#4
C	c	9	#4	11'-0"	k	2	#4
D	d	9	#4	11'-0"	l	3	#4
E	c	14	#4	11'-0"	m	6	#4
F	f	2	#4	11'-0"	n	2	#4
G	o	9	#4	11'-0"	g	2	#4
H	e	4	#4	11'-0"	h	2	#4

PLACING PROCEDURE

- PLACE 3/4" EAST-WEST "BAND LIMIT" BARS FOR BOTTOM REINFORCING.
 - PLACE 3/4" NORTH-SOUTH "BAND LIMIT" BARS FOR BOTTOM REINFORCING AND TIE.
 - PLACE 3/4" EAST-WEST BARS. TIE TO
 - PLACE 3/4" NORTH-SOUTH BOTTOM REINFORCING AND TIE ALL BARS @ INTERSECTIONS @ APPROX. 30° CC.
- REPEAT ABOVE PROCEDURE FOR TOP STEEL.

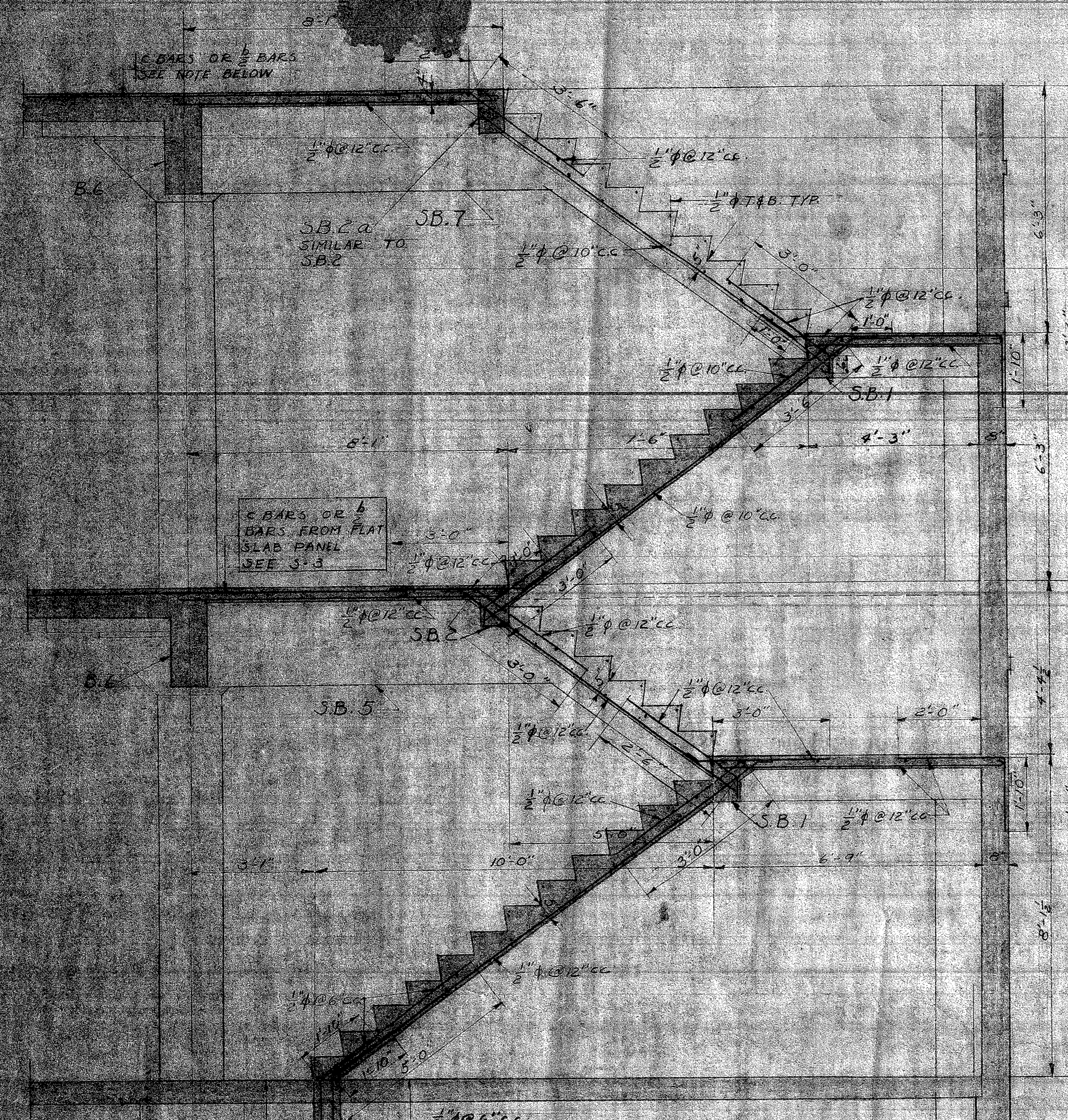
PROVIDE METAL CHAIRS FOR TOP & BOTTOM REINFORCING - SPACING CHAIRS NOT MORE THAN 4'-0" IN ANY DIRECTION

STATE STAMP APPROVED: [Signature]
RESIDENT OF THE BOARD

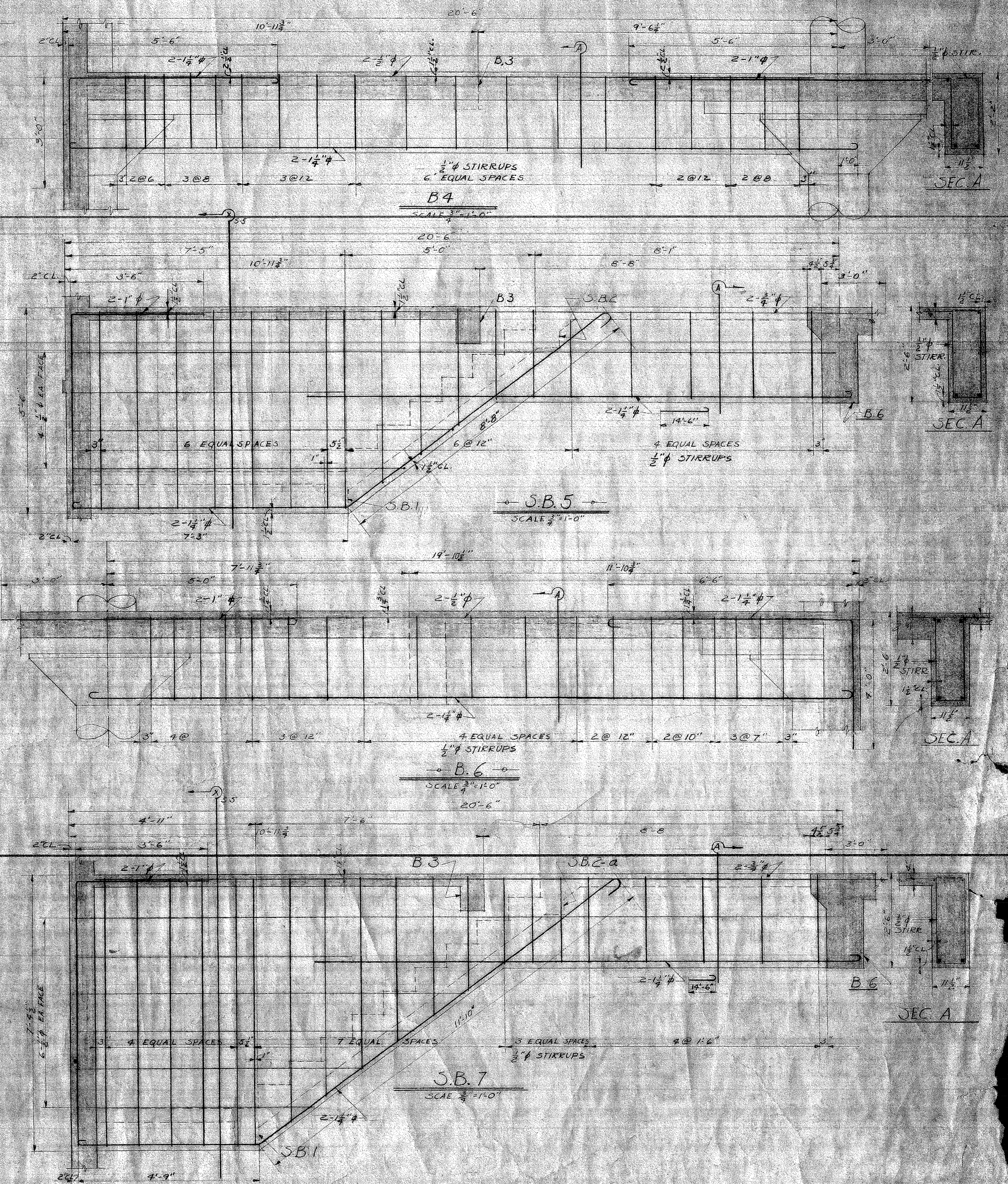
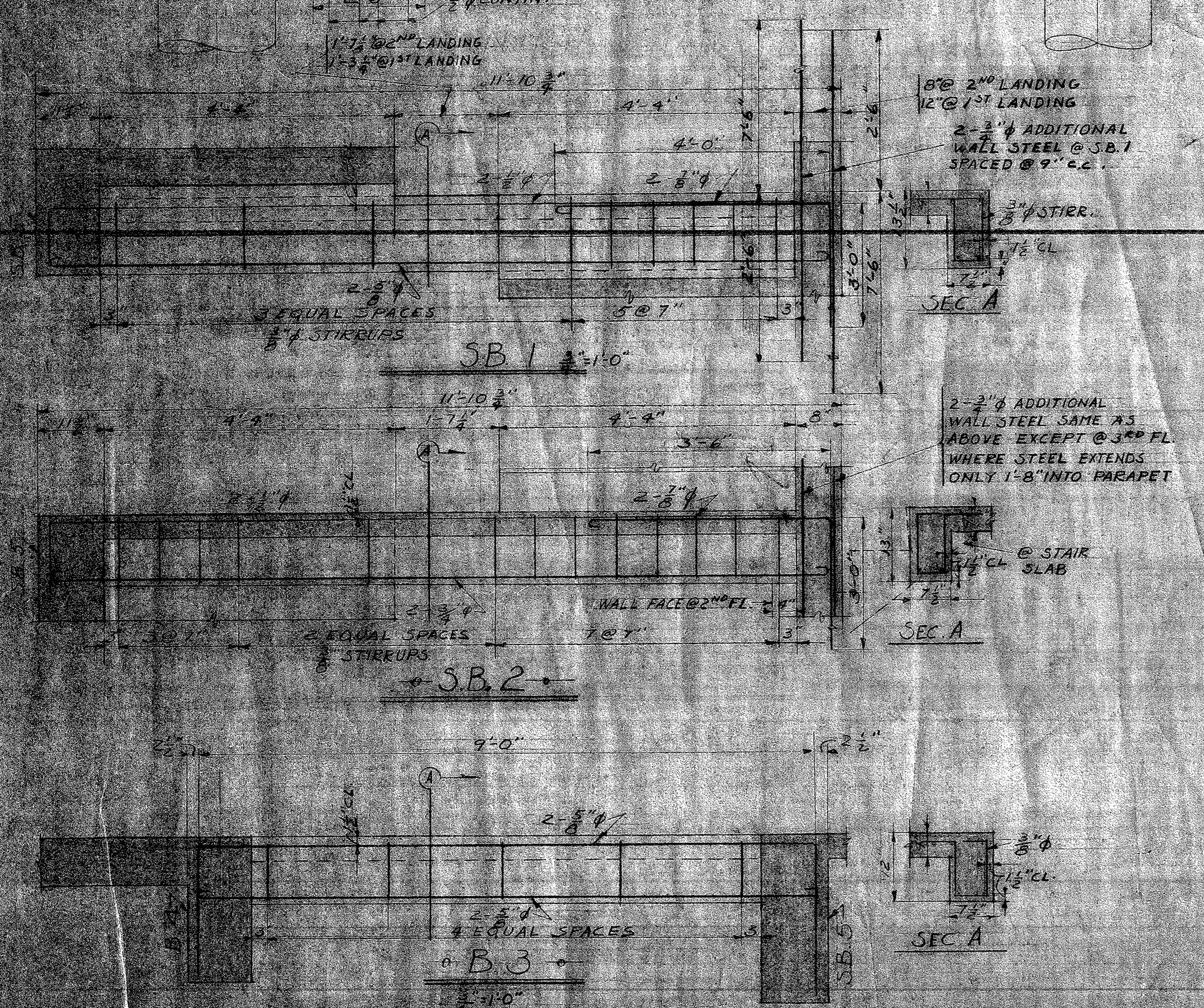
STORAGE BUILDING 16" & N STREETS
SACRAMENTO CITY UNIFIED SCHOOL DISTRICT
SACRAMENTO CALIFORNIA

CHAS. F. DEAN ARCHITECT
SACRAMENTO CALIFORNIA

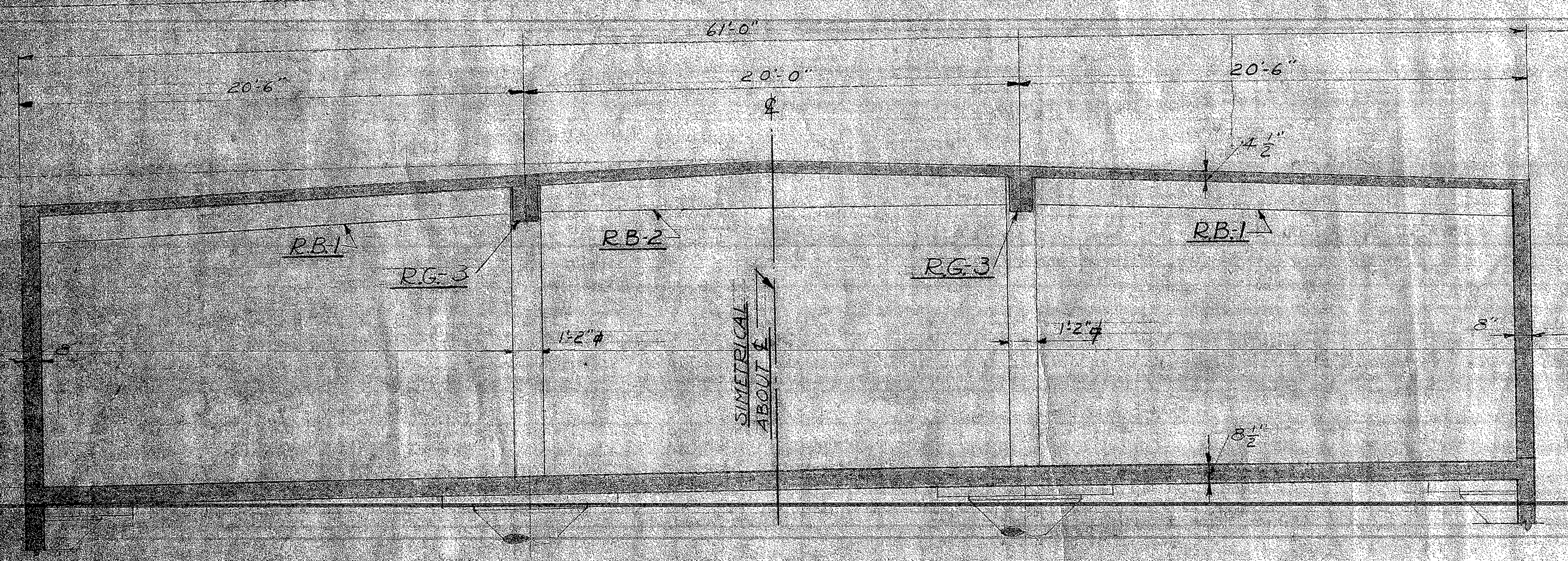
SHEET 5-2
DATE 25 JAN 60
FILE NO.



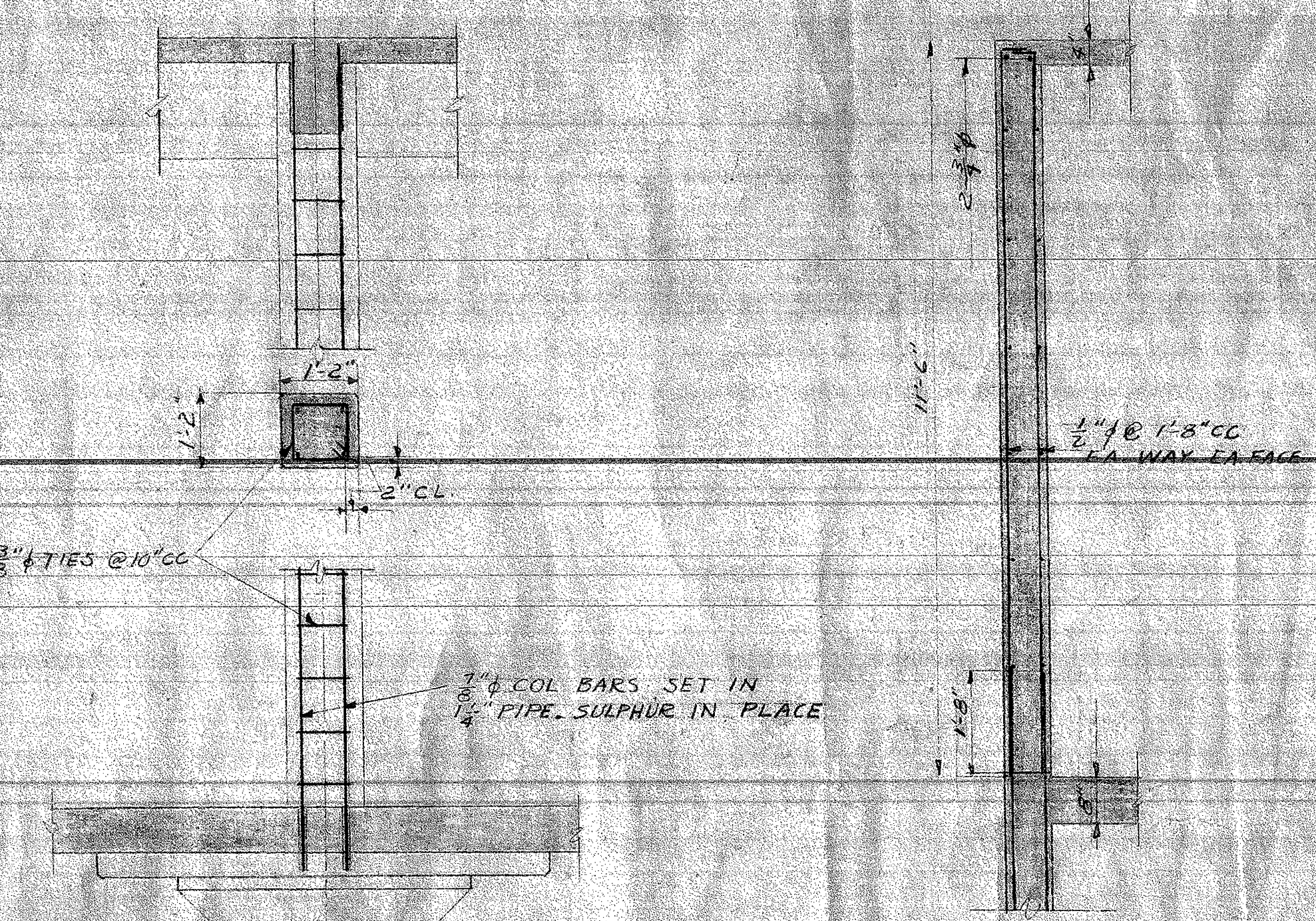
NORTH STAIR SECTION
SCALE 1/2"=1'-0"



STATE	STAMP	APPROVED:	STORAGE BUILDING 1624 N STREETS	SHEET
		<i>James Haney</i>	SACRAMENTO CITY UNIFIED SCHOOL DISTRICT	5-3
		PRESIDENT OF THE BOARD	SACRAMENTO CALIFORNIA	28-75 IN 11-11
				11
			CHAS. F. DEAN ARCHITECT	DATE
			SACRAMENTO CALIFORNIA	23 JAN 90
				FILE NO.

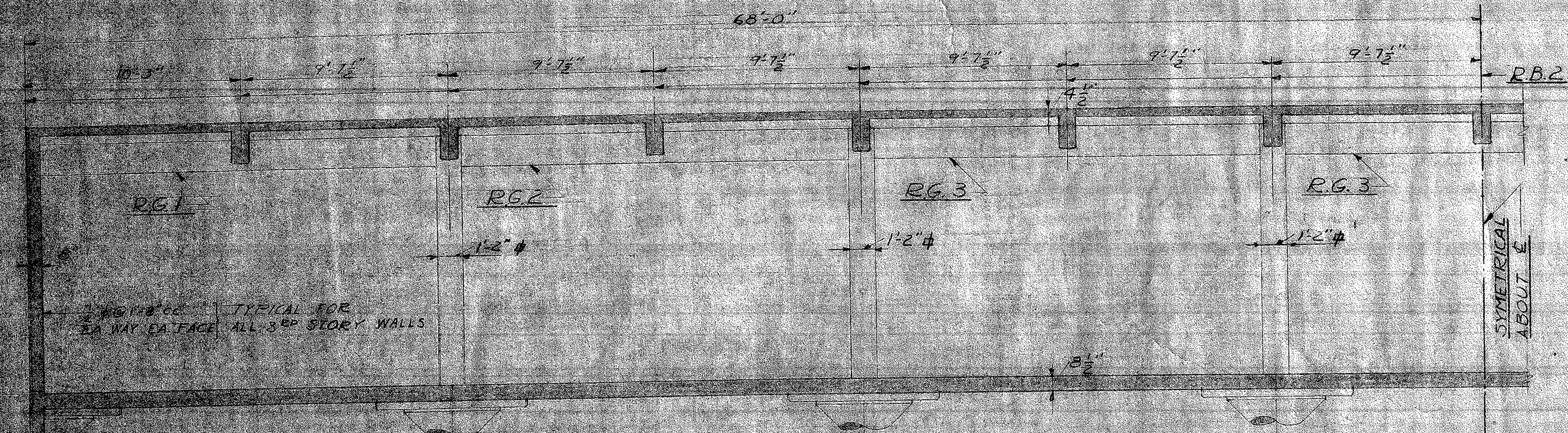


TYPICAL CROSS SECTION OF FUTURE 3RD STORY
SCALE 1/2"=1'-0"

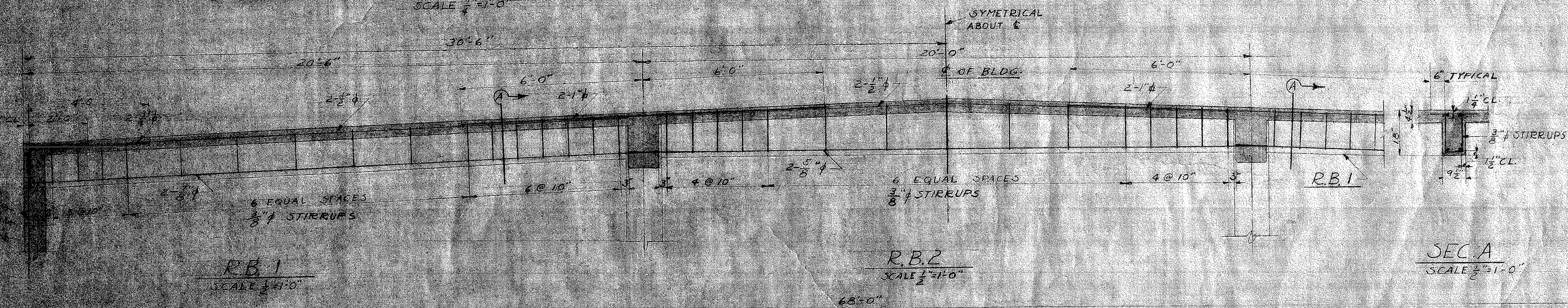


TYPICAL COLUMN FOR FUTURE 3RD FLOOR
SCALE 1/2"=1'-0"

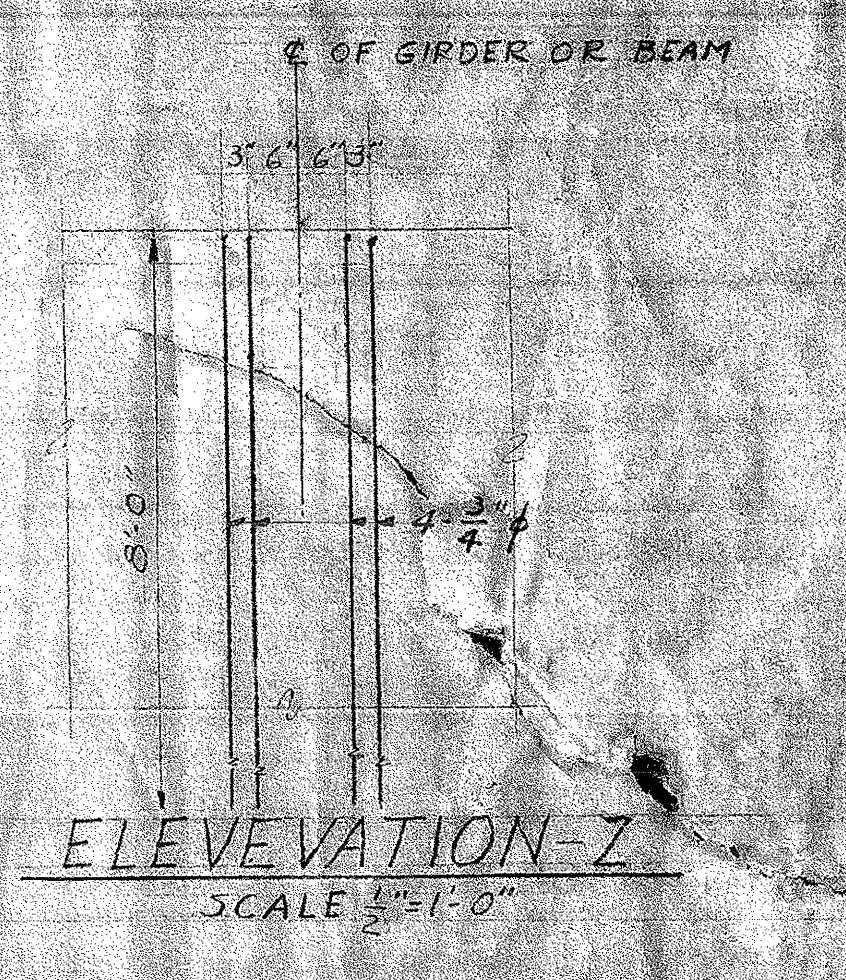
TYP. WALL SECT.
FOR FUTURE 3RD FL.



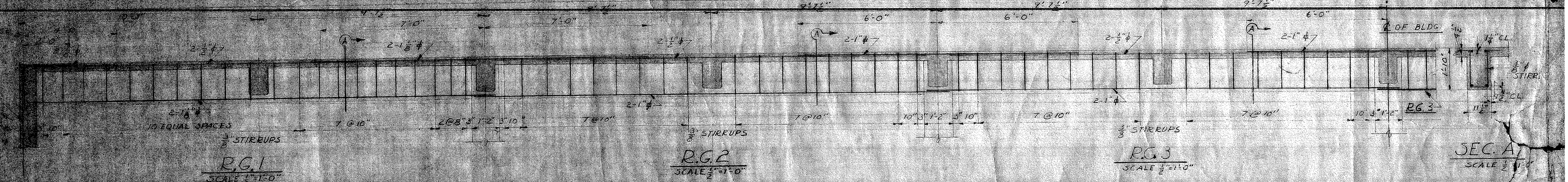
TYPICAL LONGITUDINAL SECTION OF FUTURE 3RD STORY
SCALE 1/2"=1'-0"



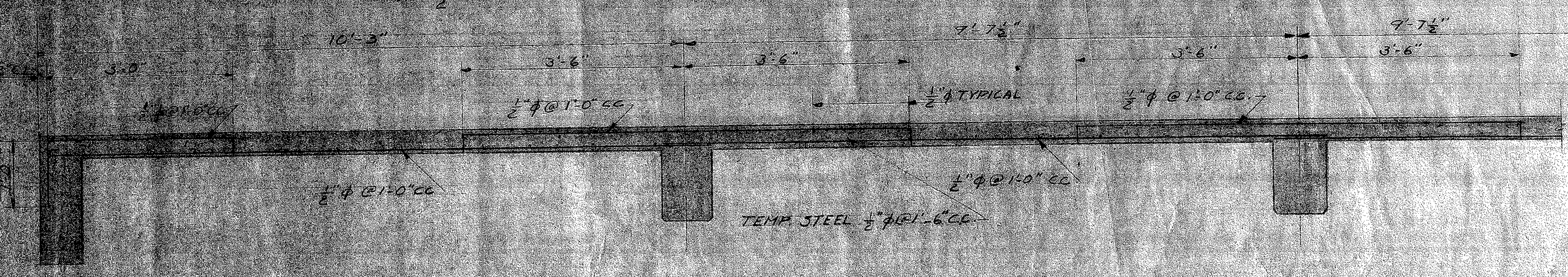
SEC. A
SCALE 1/2"=1'-0"



ELEVATION Z
SCALE 1/2"=1'-0"



SEC. A
SCALE 1/2"=1'-0"

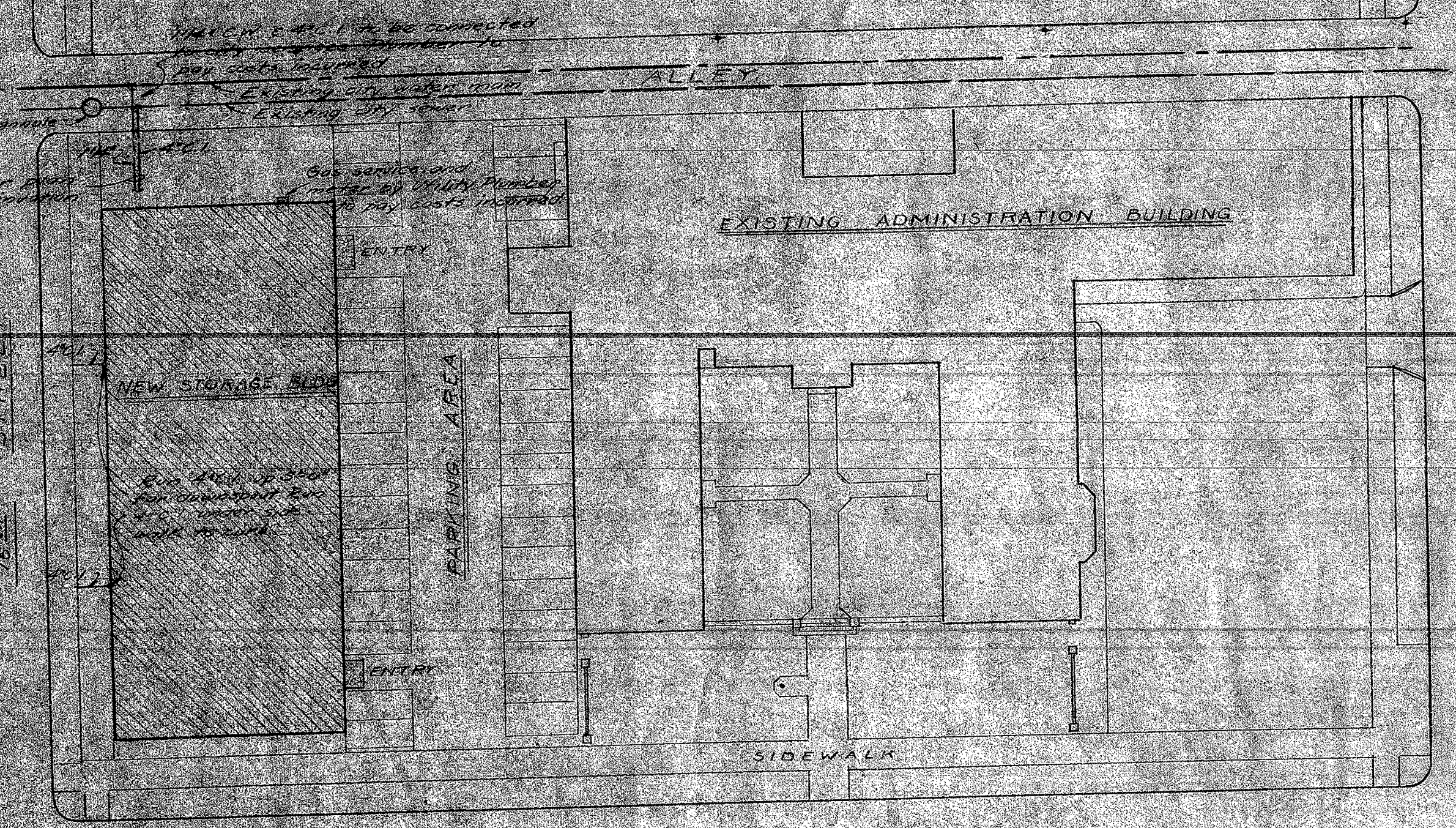


TYPICAL END BAY
FUTURE ROOF SLAB SECTION
SCALE 1/2"=1'-0"

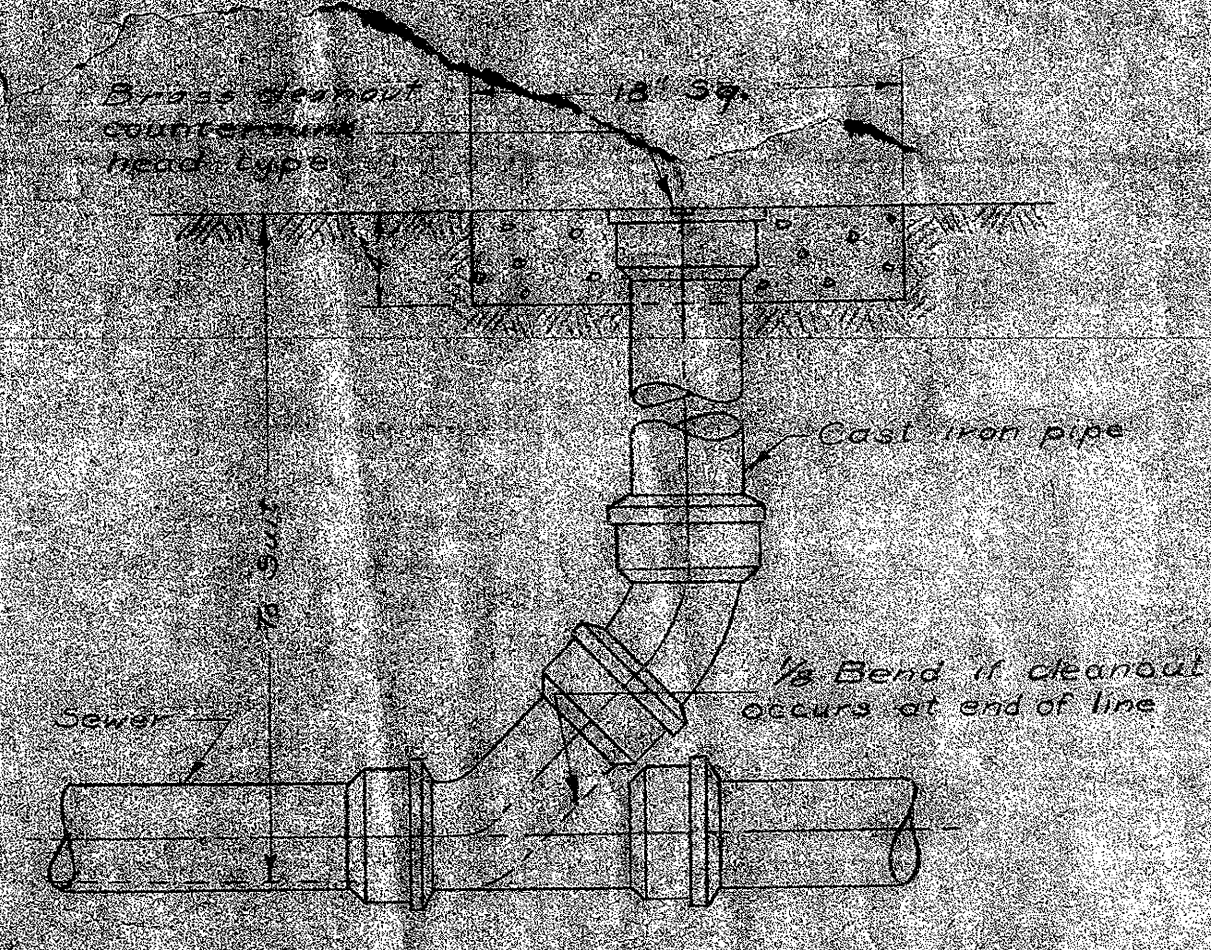
TYPICAL INT. BAY

THIS SHEET IS FOR FUTURE 3RD STORY

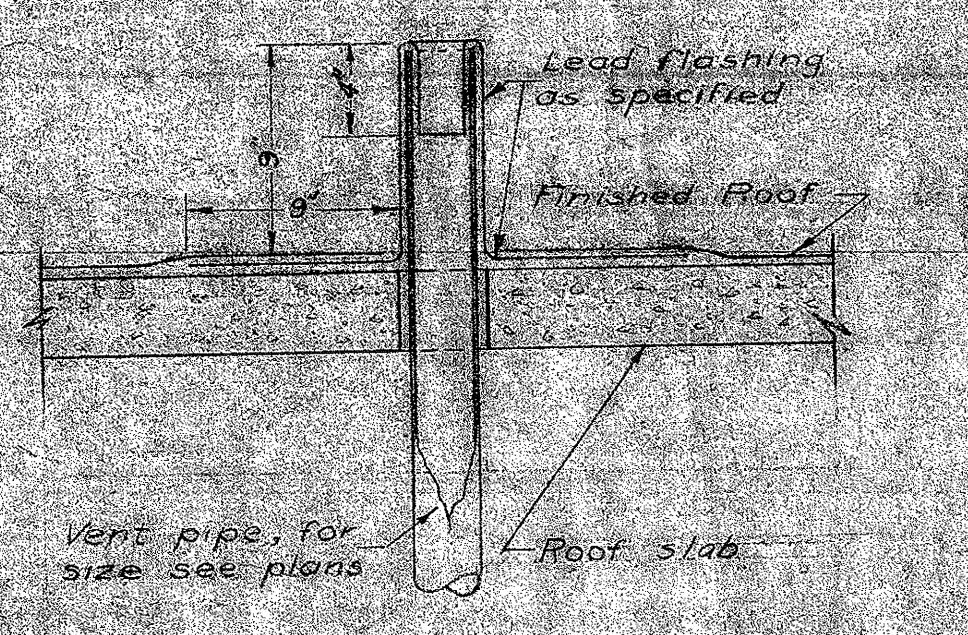
STATE	STAMP	APPROVED:	STORAGE BUILDING 16 TH & N STREETS	SHEET
		<i>Robert Kennedy</i>	SACRAMENTO CITY UNIFIED SCHOOL DISTRICT	5-2
		MEMBER OF THE BOARD	SACRAMENTO CALIFORNIA	11
			CHAS. E. DEAN ARCHITECT	DATE
			SACRAMENTO CALIFORNIA	23 JAN 90
				PRICE NO.



PLOT PLAN
Scale: 1/4" = 30'-0"



DETAIL OF CLEANOUT TO GRADE
No Scale



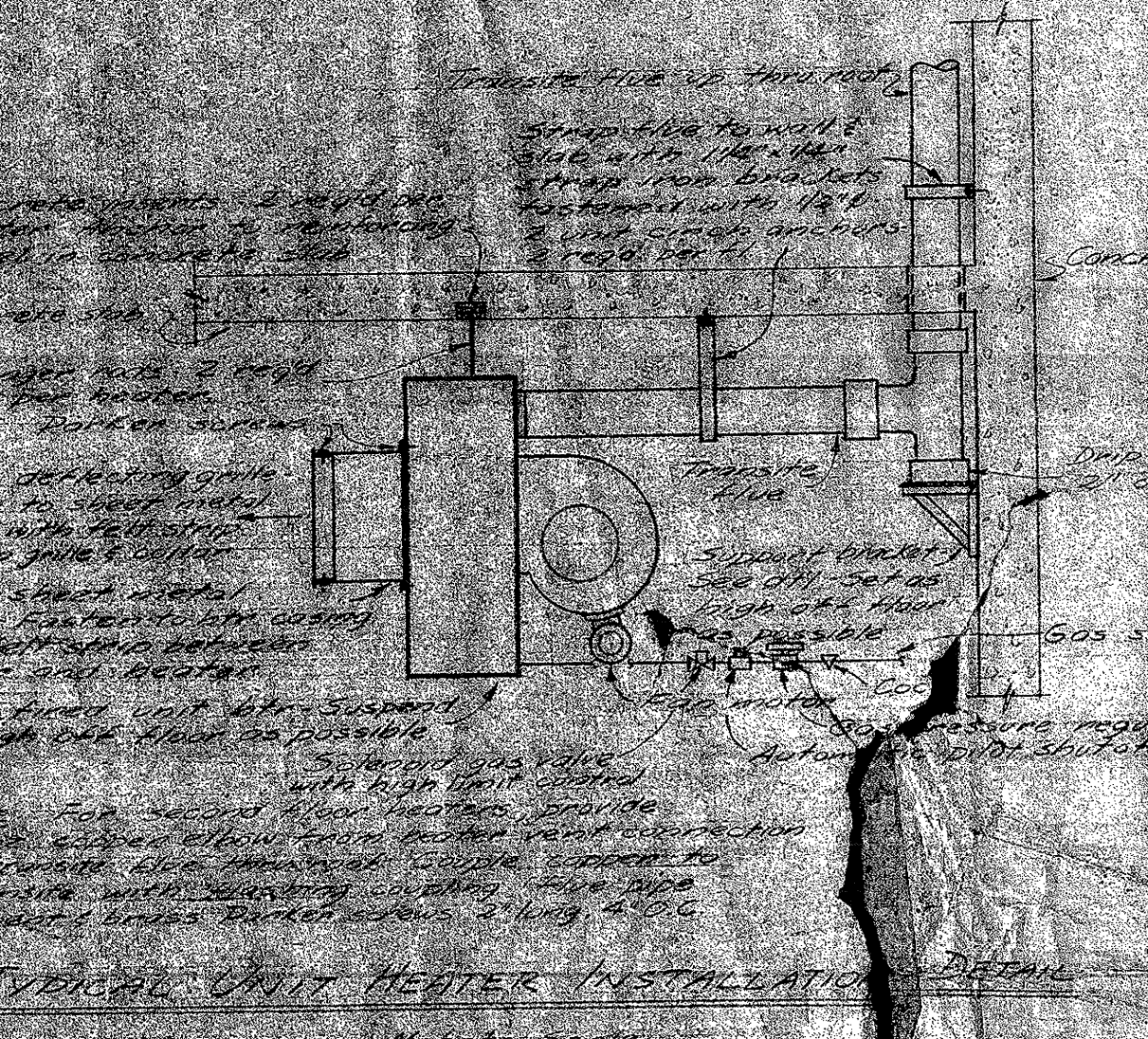
DETAIL OF VENT PIPE FLASHING
No Scale

PLUMBING LEGEND

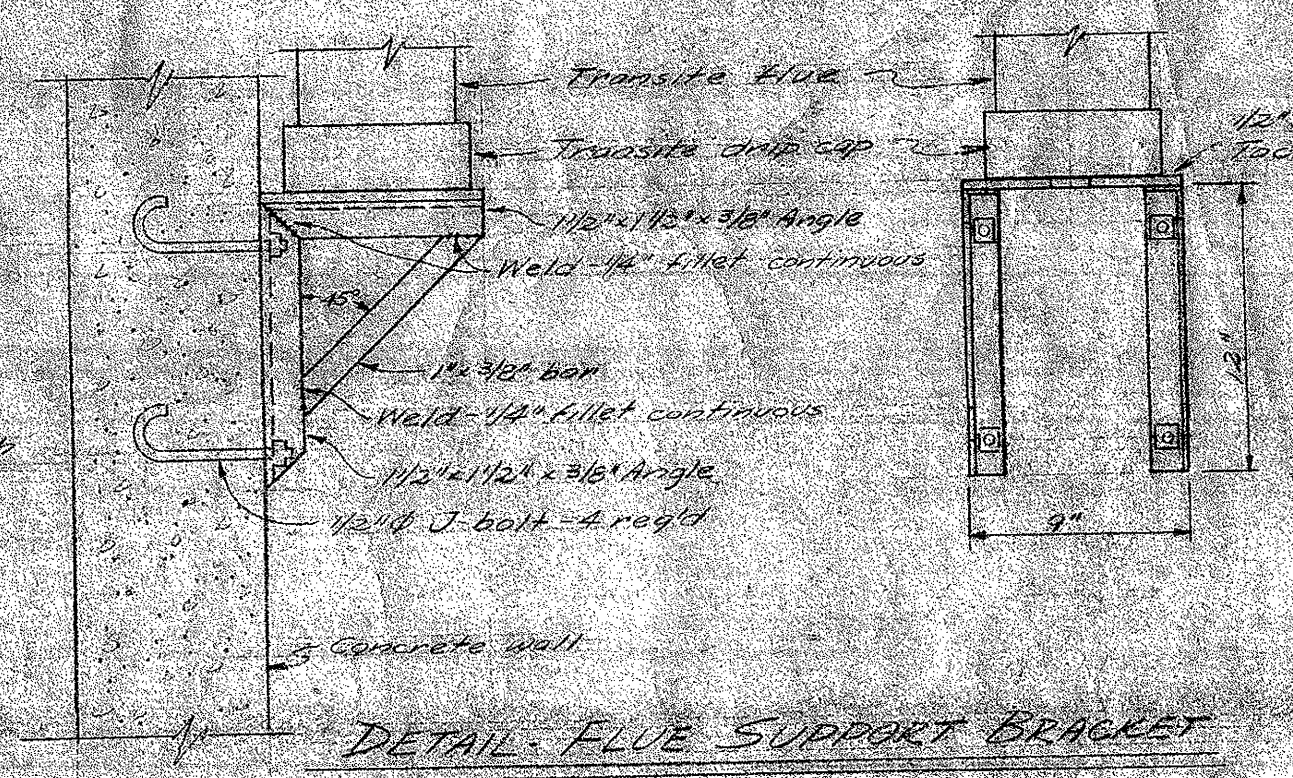
- Vent
- C.W. Cold water
- G. Gas
- W.D. Waste drop
- V.V.P. Vent, vent thru roof
- C.O.F. Cleanout floor with floor
- C.O.T. Cleanout floor with grade
- C.I. Cast iron
- C.W.P. Cold water pipe
- G.P. Gate valve
- C.V. Check valve

PLUMBING FIXTURE SCHEDULE

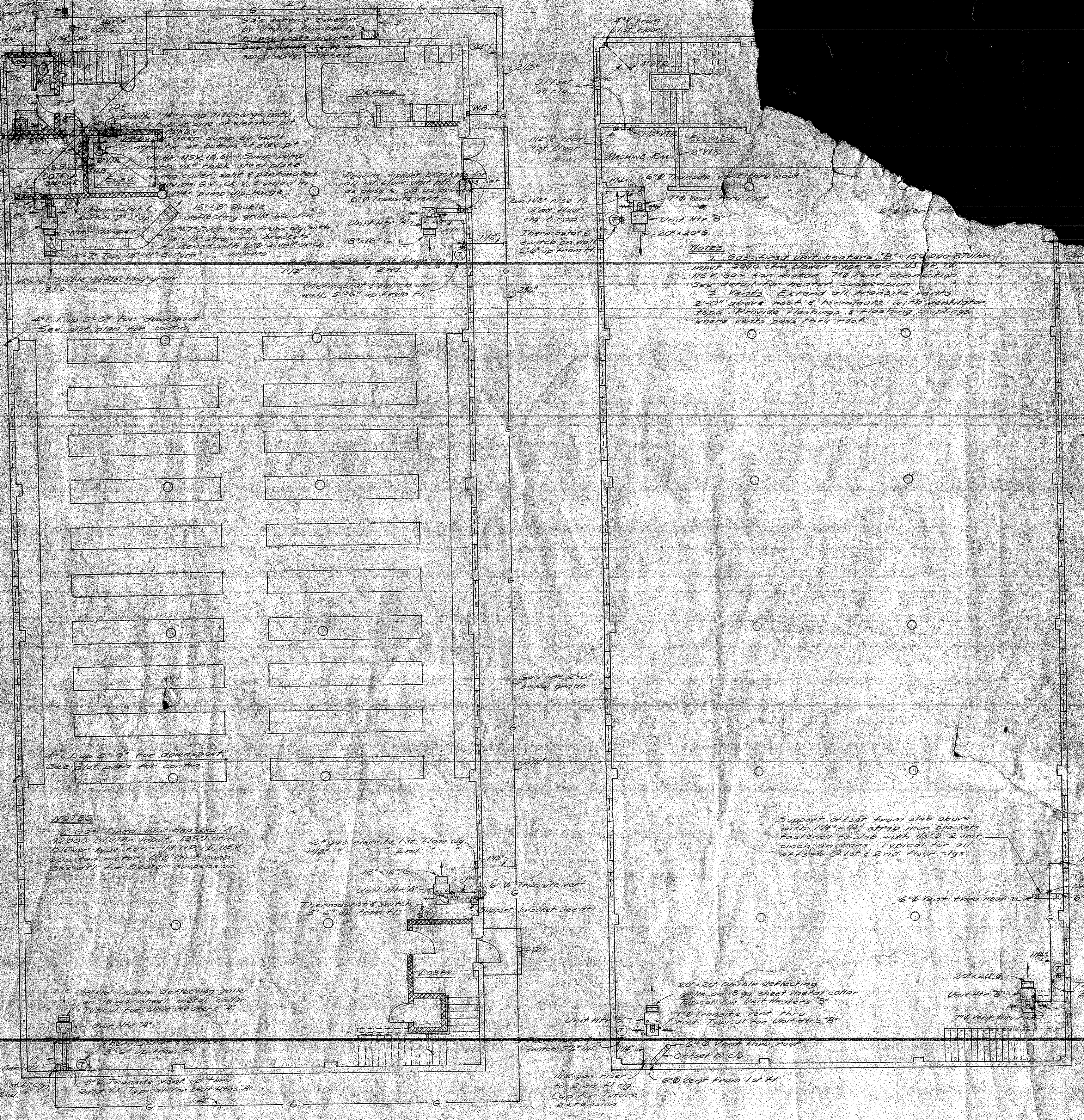
FIXTURE	SYMBOL	PIPE	VENT	SOLID WATER	DRAIN-POURLET
W.C. Toilet	1/2"	1/2"	1/2"	1/2"	1/2"
W.C. Urinal	1/2"	1/2"	1/2"	1/2"	1/2"
W.C. Bidet	1/2"	1/2"	1/2"	1/2"	1/2"
W.C. Shower	1/2"	1/2"	1/2"	1/2"	1/2"
W.C. Bath	1/2"	1/2"	1/2"	1/2"	1/2"
W.C. Sink	1/2"	1/2"	1/2"	1/2"	1/2"
W.C. Kitchen	1/2"	1/2"	1/2"	1/2"	1/2"
W.C. Laundry	1/2"	1/2"	1/2"	1/2"	1/2"
W.C. Sump	1/2"	1/2"	1/2"	1/2"	1/2"
W.C. Floor	1/2"	1/2"	1/2"	1/2"	1/2"
W.C. Stair	1/2"	1/2"	1/2"	1/2"	1/2"
W.C. Terrace	1/2"	1/2"	1/2"	1/2"	1/2"
W.C. Roof	1/2"	1/2"	1/2"	1/2"	1/2"



TYPICAL UNIT HEATER INSTALLATION
No Scale

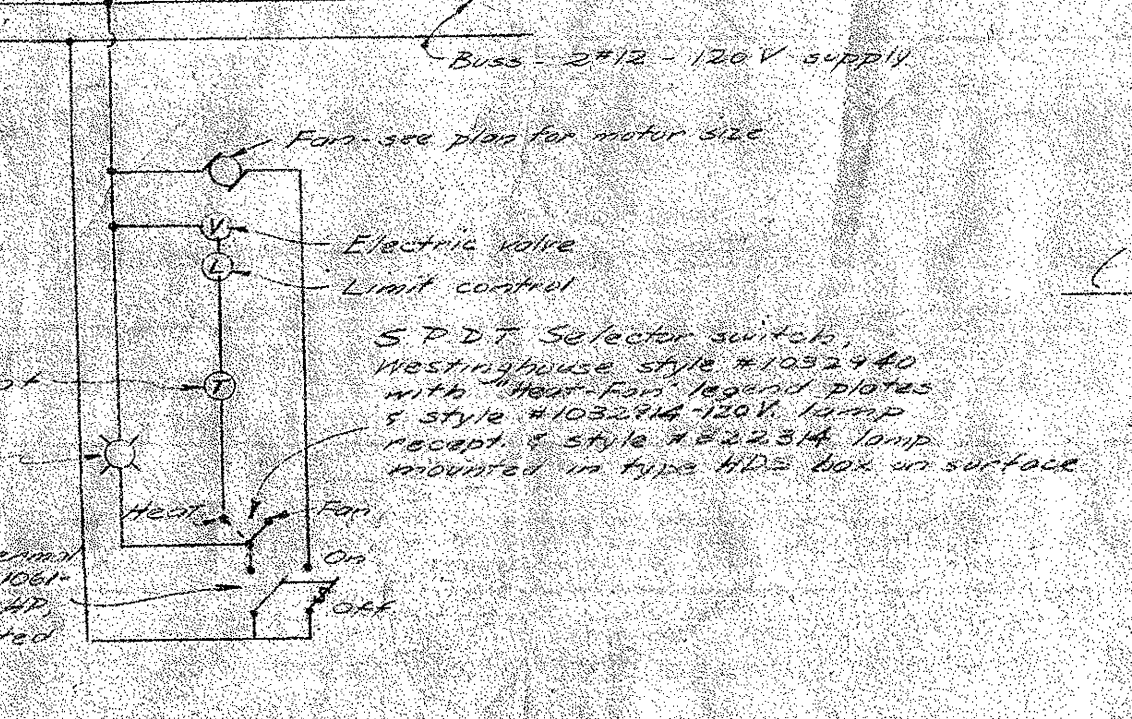


DETAIL FLUE SUPPORT BRACKET
Scale: 1/4" = 1'-0"



FIRST FLOOR PLAN
Scale: 1/8" = 1'-0"

SECOND FLOOR PLAN
Scale: 1/8" = 1'-0"



WIRING DIAGRAM
(Typical for all unit heaters)
No Scale

PLUMBING AND HEATING

STATE STAMP

APPROVED: *James J. Omer*
Mechanical Engineer
Sacramento, California

STORAGE BUILDING 1679
SACRAMENTO CITY UNIFIED SCHOOL DISTRICT
SACRAMENTO
CLAS. F. DEAN
SACRAMENTO