



Update on Conditions of Readiness for School Reopening

Board Meeting

March 18, 2021

Agenda Item No. 7.2

Presented by:

Christine Baeta, Chief Academic Officer

Raoul Bozio, In-House Legal Counsel

Nathaniel Browning, Director of Facilities

Victoria Flores, Director of Student Support and Health Services

Tara Gallegos, Chief Communications Officer

Vincent Harris, Chief of Continuous Improvement and Accountability

Doug Huscher, Assistant Superintendent, Student Support Services

Manpreet Kaur, Youth Development

Raymond Lozada, Director of Safe Schools

Keyshun Marshall, Coordinator of Risk Management

Cancy McArn, Chief Human Resources Officer

Leigh Sata, Interim Assistant Superintendent, Operations

Chad Sweitzer, Instructional Assistant Superintendent

Matt Turkie, Assistant Superintendent, Curriculum and Instruction

Jeff Winn, Facilities Maintenance Manager



Return Together Vision Statement

Sac City Unified will disrupt the current status quo of systemic inequity to meet the academic, social and emotional needs of all our students, especially our most vulnerable students. Such disruption must result in higher learning standards and accountability. **Our Return Together Plan will abide by all county public health orders to safely serve as many students as possible through in-person instruction.** Because we recognize the evolving nature of this pandemic, all of our learning models will meet the needs of all students and mitigate learning loss, assuring that all students are given an equal opportunity to graduate with the greatest number of postsecondary choices from the widest array of options.



Revised Blueprint for a Safer Economy County Tier Assignment

Current Framework: 2 million people vaccinated in HPI quartile

The case rate, test positivity, and health equity metric thresholds must be met to move forward toward more reopening.

WIDESPREAD	SUBSTANTIAL	MODERATE	MINIMAL
<ul style="list-style-type: none">• More than 10.0 daily new cases (per 100k)*• More than 8.0% positive test for entire county**	<ul style="list-style-type: none">• 4.0 – 10.0 daily new cases (per 100k)*• 5.0 – 8.0% positive tests for entire county**• Less than 8.1% positive tests for health equity quartile**	<ul style="list-style-type: none">• 1.0 – 3.9 daily new cases (per 100k)*• 2.0 – 4.9% positive tests for entire county**• Less than 5.3% positive tests for health equity quartile**	<ul style="list-style-type: none">• Less than 1.0 daily new case (per 100k)*• Less than 2.0% positive tests for entire county**• Less than 2.2% positive tests for health equity quartile**



California Department of Public Health Sacramento County COVID-19 Cases

Sacramento County **Red/Substantial Risk Level**

Cases (Sacramento County)

95,414

Total Confirmed Cases

+71 (+0.1%)

Reported 3/15

8

Cases per 100K
(7-day average)

US Total Cases:
29,229,162

Deaths (Sacramento County)

1,463

Total Confirmed Deaths

+1 (+0.1%)

Reported 3/15

0.05

Deaths per 100K
(7-day average)

US Total Deaths:
531,766

Cases by Episode Date
Sacramento County

Confirmed Cases
Data incomplete for recent dates



- **8.0 cases a day per 100K residents**
- 3.2% positivity rate
- 5.2% health equity quartile positivity rate

All grade levels are allowed to reopen when the county is in the red tier



COVID Vaccine

<https://www.scusd.edu/vaccinations>

- Vaccination is voluntary and by appointment only - resources posted to the SCUSD Vaccinations website
- As of March 2nd all staff continually provided registration links from SCUSD and/or SCPH
- Vaccine Options:
 - SCPH listed vaccine clinics
 - Health insurance provider
 - Dignity Health/SCUSD Clinics
 - Friday 2/19 - first dose & 3/12 - second dose
 - Friday 2/26 - first dose & 3/19 - second dose
 - **Friday 3/26 first dose & 4/16 - second dose**

COVID-19 Vaccination Information

Including SCUSD Clinics

As part of our efforts to curb the spread of COVID-19, we are working with community partners to host and promote COVID-19 vaccination clinics for those eligible to receive the COVID-19 vaccine, including community members and eligible SCUSD staff.

Sacramento County Public Health announced that education staff were eligible to receive the vaccine on February 16, 2021.

Please see the [Sacramento County Public Health website](#) for the latest information about the vaccination schedule and appointment information.

Vaccination Resources for SCUSD Employees and Contracted Providers

For the most current and up-to-date information about vaccine clinics in Sacramento, visit the [Sacramento County Public Health Vaccine Registration for Childcare Providers and Educators](#) website.

[McClellan Park Vaccine Clinic \(Curative\)](#)

[Vaccine Finder](#)

[Download the Vaccination Fact Sheet & FAQ on](#)

Benefits of the COVID-19 Vaccine

About the COVID-19 Vaccine

COVID-19 Vaccine FAQs

Sacramento County COVID-19 Vaccine Information

[VIEW WEBSITE](#)

Sac City Unified COVID-19 Vaccine Rollout

Sacramento County COVID-19 Testing Sites

[VISIT WEBSITE](#)



REOPENING DASHBOARD

Home

Español / Spanish

Hmoob / Hmong

中文 / Chinese

Tiếng Việt / Vietnamese

Our team is hard at work to ensure that our students, staff, and community remain safe as we plan to reopen. You can read more about what our district is doing to go above and beyond local, state, and federal recommendations and requirements here.

*AAB (Above and Beyond) Indicates a Condition that is not Required by Local, State, or Federal Entities

*SSA (Safe Schools for All) Indicates a Metric indicated in the Governor's Safe Schools for All Plan

Dashboard Updated: March 9, 2021

To learn more about each metric and its progress, please click on the titles below.





COMPLETED Dashboard Metrics Testing



Routine SCUSD on-site testing **COMPLETED**

- Health Services is providing COVID testing for staff and students at all Learning Hub sites and all district locations based on county tier assignment - testing is conducted during the school day
- Testing began the week of March 8th and continues to expand to additional sites. PCR Testing is offered at this time
 - 600+ tests conducted to date with
 - 0.86% positivity rate
 - 28 hr average turnaround time



In Progress Dashboard Metrics

Site Safety



- Plexiglass barriers: **IN PROGRESS**
 - Front office counters - complete
 - Multipurpose room & cafeteria counters - complete
 - Library counters - complete
 - Additional office counters - complete by April 2
- Directional signage and stanchions: **IN PROGRESS**
 - Tents and traffic cones - distribution to sites began this week
 - Stanchions previously provided to each site - additional stanchions ordered
 - Directional arrows & signage provided - complete by March 31



Third Party Facilities Assessment

- Readiness assessments prepared by PBK Architects
 - PBK readiness assessment experience includes Twin Rivers, Natomas, Galt, & Robla USDs
- Final assessment site-walks began this week
 - Final site-walks completed by Monday, March 22, 2021
- Readiness dashboards are provided to Site Leaders and School Site Managers
 - Facilities central services team will continue to support Site Leaders in completing any outstanding items



CDC Guidelines (highlights)

Bring in as much outdoor air as possible

- Where safe to do so, open windows and doors
- [Hold] activities, classes or lunches outdoors when circumstances allow

Ensure HVAC systems are maximizing ventilation

- Service HVAC and ensure they are meeting codes
- Bring in as much outside air as possible
- Consider running air 2-hours before and after building is occupied

Filter and/or clean the air in school

- Improve level of air filtration as much as possible
- Consider portable air cleaners

Use exhaust fans in restrooms and kitchens

- Inspect and maintain exhaust ventilation

Open windows in transportation vehicles

<https://www.cdc.gov/coronavirus/2019-ncov/community/schools-childcare/ventilation.html>



Information about AB 841

AB 841 provides State funding to upgrade HVAC and water fixtures in public schools through competitive grant program

- Prioritizes schools in underserved communities and those near freeways or industrial facilities
- Funding for assessment, repair & replacement of HVAC systems, new HVAC filters, and the installation of CO2 monitors
- Funding for replacing aging & inefficient water fixtures & appliances in schools

Grant program details being worked out, **funding not yet available:**

<https://www.energy.ca.gov/programs-and-topics/programs/school-energy-efficiency-stimulus-sees-program-assembly-bill-841>



SCUSD Ventilation & Filtration Goals

1. Flush air in classrooms a minimum of 2 hours before & after class
2. Upgrade filters from MERV-8 to MERV-13 wherever possible
3. Evaluate air, ventilation & filtration systems w/targeted goals based on material availability (repair upon discovery)
4. Provide portable HEPA filtration units in classrooms without MERV-13
5. Address CO2 monitoring & TAB report
 - a. Handheld CO2 monitors within 2 wks. of return to school (4/2021)
 - b. CO2 monitors compatible w/BMS (~60%) by Dec. 2021 (fall semester)
 - c. Remaining CO2 monitors & TAB report by June 2022 (spring semester)
6. Upgrade & modernize HVAC units over time



SCUSD Progress to Date

1. Flush air in classrooms a minimum of 2 hours before & after class
 - HVAC units programmed to meet air-flushing criteria. **Complete.**
1. Upgrade filters from MERV-8 to MERV-13 wherever possible
 - Staff assessment that ~75% of classrooms to MERV-13. **Complete.**
 - Filter replacement from April 1 to May 31. **PO by Mon (3/22).**
1. Evaluate air, ventilation & filtration systems w/targeted goals based on material availability
 - Five mechanical contractors identified by staff. **Bids by Fri (3/26).**
1. Provide portable HEPA filtration units in classrooms without MERV-13
 - 3,000 units purchased. **As of 3/18, 1,938 units deployed (64.6%).**



SCUSD Progress to Date (continued)

5. Address CO2 monitoring & TAB report
 - Handheld CO2 monitors within 2 wks. of return to school (4/2021). **As of 3/18, CO2 units selected & vendor quote received.**
 - CO2 monitors compatible w/BMS (~60%) by Dec. 2021 (Fall semester). **As of 3/18, vendor identified with proposal due on Fri (3/26).**
 - CO2 monitors for non-BMS units & TAB report by June 2022 (Spring semester). **As of 3/18, CO2 sensor research ongoing. TAB vendors identified, work may begin after filter change & HVAC repair.**
6. Upgrade & modernize HVAC units over time.
 - **3rd party assessment may begin after filter change & HVAC repair.**



Additional Testing and Research

Qualified 3rd party testing agency will test UVDI unit - due diligence

- Phase 1: Testing UVDI unit in a closed space to ensure unit does not produce unsuitable by-products. PO issued (3/15), testing Fri (3/19) & Mon (3/22).
- Phase 2: Testing of UVDI unit in 5 spaces on 3 campuses to determine if unit can clean air to meet District's criteria. Testing Fri (3/19) & Mon (3/22). Lab report & test findings expected by Fri (4/2).

Staff evaluating additional ventilation enhancements at school entry points and other open spaces.

- Ceiling fans with UV up-lighting or ionization.
- Seeking input from peer schools.



Human Resource Services Department
 Intent to Return Forms - Summary Report
 March 17, 2021

First Issuance of the Form:	8/19/20	Second Issuance of the Form and Follow up Outreach (calls/emails) Through 1/4/21:	11/10/20	Third Issuance of the Form and Follow up Outreach (InformedK12 emails) Through 3/17/21 reminders:	1/15/21
Due Date:	8/27/20	Due Date:	11/17/20	Due Date:	1/31/21
Outcome of forms received:	1906	Outcome of forms received:	452	Outcome of forms received:	3571
SCTA	985	SCTA	276	SCTA	1738
SEIU	689	SEIU	84	SEIU	1183
Teamsters	21	Teamsters	10	Teamsters/TCS	89
UPE	75	UPE	19	UPE	135
Non-represented	136	Non-represented	63	Non-represented	561

Total Number of Employees:	4467
Percentage of Forms Received	42.7%

Total Number of Employees:	3,081
Percentage of Forms Received	14.7%
Results of Follow-up Efforts (calls/emails/late responses)	
<ul style="list-style-type: none"> • 265 responses were received by the 11/17/20 deadline • Additional 187 responses gathered due to follow-up efforts 	

Total Number of Employees:	5,396
Percentage of Forms Received	66%



Dashboard – HR Data on Re-opening – March Data 3/17/21				
	Plans to Physically Attend	Plans to Physically Attend with Assistance	Plans to Remotely Attend	Does Not Plan to Attend
Overall Response Rate 66% (3571)	2994	314	210	235
SCTA	1431	168	147	10
SEIU	1014	94	66	9
Teamsters	64	5	0	1
Teamsters Classified Supervisors	19	0	0	0
UPE	117	17	0	1
Classroom Teachers*	1339	161	139	8
Clerical Office Staff	241	29	25	1
Site Assigned Staff	1940	226	178	17
Department Assigned Staff	1054	88	54	8
EK-3 Teachers	384	44	35	1 (161- no responses)
Elementary Sites	987	104	96	11
Middle School Sites	236	21	18	2
K-8 Sites	233	33	12	2
Secondary Sites	472	65	51	2
Nutrition Services	204	3	0	1
Transportation	46	9	3	1

*Includes Adult Ed, Child Development, Pre-school teachers



Elementary	Staff	%	Elementary	Staff	%
ABRAHAM LINCOLN ELEMENTARY	7	29%	JOHN BIDWELL ELEMENTARY	2	11%
BG CHACON ACADEMY	3	14%	JOHN CABRILLO ELEMENTARY	6	29%
BOWLING GREEN ELEMENTARY	7	28%	JOHN D SLOAT BASIC ELEMENTARY	2	10%
CALEB GREENWOOD ELEMENTARY	9	36%	MARK TWAIN ELEMENTARY SCHOOL	2	13%
CAMELLIA BASIC ELEMENTARY	7	30%	MATSUYAMA ELEMENTARY SCHOOL	6	19%
CAPITAL CITY SCHOOL	1	5%	NEW JOSEPH BONNHEIM	3	19%
CAROLINE WENZEL ELEMENTARY	2	12%	NICHOLAS ELEMENTARY SCHOOL	9	31%
CESAR CHAVEZ INTERMEDIATE	4	19%	O. W. ERLEWINE ELEMENTARY	3	19%
CROCKER/RIVERSIDE ELEMENTARY	12	43%	OAK RIDGE ELEMENTARY SCHOOL	2	8%
DAVID LUBIN ELEMENTARY SCHOOL	4	13%	PACIFIC ELEMENTARY SCHOOL	3	8%
EARL WARREN ELEMENTARY SCHOOL	1	5%	PARKWAY ELEMENTARY SCHOOL	6	20%
EDWARD KEMBLE ELEMENTARY	6	20%	PETER BURNETT ELEMENTARY	4	15%
ELDER CREEK ELEMENTARY SCHOOL	13	38%	PHOEBE A HEARST BASIC ELEM.	11	39%
ETHEL I. BAKER ELEMENTARY	16	53%	PONY EXPRESS ELEMENTARY SCHOOL	5	25%
ETHEL PHILLIPS ELEMENTARY	4	15%	SEQUOIA ELEMENTARY SCHOOL	9	41%
FATHER K.B. KENNY - Elementary	2	10%	SUSAN B. ANTHONY ELEMENTARY	6	26%
GOLDEN EMPIRE ELEMENTARY	7	26%	SUTTERVILLE ELEMENTARY SCHOOL	5	19%
H.W. HARKNESS ELEMENTARY	4	17%	TAHOE ELEMENTARY SCHOOL	2	11%
HOLLYWOOD PARK ELEMENTARY	3	17%	THEODORE JUDAH ELEMENTARY	4	21%
HUBERT H BANCROFT ELEMENTARY	3	11%	WASHINGTON ELEMENTARY SCHOOL	1	8%
ISADOR COHEN ELEMENTARY SCHOOL	4	29%	WILLIAM LAND ELEMENTARY	2	8%
JAMES W MARSHALL ELEMENTARY	6	29%	WOODBINE ELEMENTARY SCHOOL	3	15%



Middle School	Staff	%
ALBERT EINSTEIN MIDDLE SCHOOL	4	12%
CALIFORNIA MIDDLE SCHOOL	7	17%
FERN BACON MIDDLE SCHOOL	5	15%
KIT CARSON INTL ACADEMY	9	28%
SAM BRANNAN MIDDLE SCHOOL	1	4%
SUTTER MIDDLE SCHOOL	17	35%
WILL C. WOOD MIDDLE SCHOOL	4	13%



K-8 School	Staff	%
A. M. WINN - K-8	5	22%
ALICE BIRNEY WALDORF - K-8	5	16%
GENEVIEVE DIDION ELEMENTARY	6	21%
JOHN H. STILL - K-8	8	15%
LEONARDO da VINCI ELEMENTARY	13	30%
MARTIN L. KING JR ELEMENTARY	3	13%
ROSA PARKS MIDDLE SCHOOL	6	14%



High School	Staff	%
ACCELERATED ACADEMY	1	20%
AMERICAN LEGION HIGH SCHOOL	1	5%
C. K. McCLATCHY HIGH SCHOOL	16	17%
CAPITAL CITY SCHOOL	1	5%
ENGINEERING AND SCIENCES HS	4	17%
GEO WASHINGTON CARVER	3	18%
HEALTH PROFESSIONS HIGH SCHOOL	2	13%
HIRAM W. JOHNSON HIGH SCHOOL	13	17%
JOHN F. KENNEDY HIGH SCHOOL	12	13%
LUTHER BURBANK HIGH SCHOOL	6	6%
NEW TECH	3	21%
ROSEMONT HIGH SCHOOL	6	10%
THE MET	3	18%
WEST CAMPUS	10	29%



Technology

- Reopening Technology Committee recommended technology for classrooms
 - 2 Devices and additional monitor for teachers
 - LCD monitor for students in class and online
 - Poly Studio Bar camera, microphone and speaker
 - Chromebook carts, charging cords and spare Chromebooks
 - Power Strips
- Broadband & Wireless Access Points

Insert Play for Re-opening Video

<https://www.youtube.com/watch?v=XXqye9v1ImE>



return
to LEARN

Learning Model and Phase In

- Recommended Phased-in implementation of the In-Person Concurrent Model
 - Certificated staff returns the Monday prior to their segment return
 - **Spring Break:** March 29-April 2
 - **April 8th:** Return of all Pre K-3 students and all K-6 Special Day Classes students
 - **April 15th:** Return of all 4th-6th grade students
 - Assuming Sacramento County moves to Red Tier all 7-12th grade students return no later than May 6th (April 22nd Now Proposed) (wait for this date until we pass proposal today) District Proposal is for April 22nd.



return
to LEARN

Concurrent Learning Model

- Distance Learning will remain an option for families (group C).
- Those students who choose to return in person will be split into an A and B group.
- The A and B group attend school in person for two days a week and engage in distance learning for 3 days a week.
- Students keep their same teachers.
- Synchronous teaching of students in person and at home concurrently.
- Time in the day for targeted small group instruction.
- Technology hardware set-up is needed in each classroom.



return
to LEARN

Professional Learning Supports

Best practices for our **concurrent teaching model**, including the **Universal Design for Learning** supports and access we have been building since last spring; Learning for all and learning for differentiated needs

- Creation of permanent **website** that will house instructional resources. This website will be updated as needs change.
 - Videos of lessons, sample structures, sample schedules, and other resources to meet the differentiated needs of our teaching team
- **Handbook** detailing technology set up and use to enhance instruction

Health and safety protocols and requirements

Elementary Learning Model

	Monday	Tuesday	Wednesday	Thursday	Friday
In person at school	Full DL Day	Group A	Group B	Group A	Group B
Distance learning from home	Group A Group B Group C	Group B Group C	Group A Group C	Group B Group C	Group A Group C

- Monday: Distance learning for all. Time for both whole group synchronous instruction and targeted small group instruction. Collaborative Time for teachers.
- Tues-Fri: 3 hours of live synchronous instruction in the morning, with concurrent teaching of students in person and students at home. Afternoon is for targeted small group instruction.
- Students pick up grab and go meals at lunchtime.

Secondary Model

	Monday (periods 1-6)	Tuesday (Periods 1,3,5)	Wednesday (Periods 1,3,5)	Thursday (Periods 2,4,6)	Friday (Periods 2,4,6)
In person at school		Group A	Group B	Group A	Group B
Distance learning from home	Group A Group B Group C	Group B Group C	Group A Group C	Group B Group C	Group A Group C

- Secondary start times will return to their scheduled start times for 2019-20, to allow for bus schedules and to finish before lunch for health and safety reasons
- Monday: Distance learning for all. Time for both whole group synchronous instruction and targeted small group instruction. Collaborative Time for teachers.
- Tues-Fri: About 3 hours live synchronous instruction. Concurrent teaching of students in person and students at home. Time for targeted small group instruction.
- Students pick up grab and go meals at lunchtime.



Site Administrator Roles for Re-Opening

- Site Best Practices for Thermal Temperature Screening
 - Guidelines to assist with temperature screening for every student entering onto campus
- COVID-19 School Guidance Checklist
 - Required by California Department of Public Health (CDPH)
 - Each site is required to have a COVID Prevention Program posted on every school site's home webpage and displayed in the front office.
- Daily Inspection Form
 - Provide a process for hazard identification and to ensure mitigation guidelines are enforced
- Training for Staff, Students, Families
 - Administrators will provide communication on site specific procedures for staff and how families will be educated on the application and enforcement of the plan.



Expanded Learning

- Youth Development will offer Expanded Learning programming at 43 additional sites for a maximum of 3.5 hours each day
- Expanded Learning Program will start Immediately once in-person learning concludes
- Expanded Learning includes academic supports, tutoring, snack, physical activities, and enrichment activities provided by supplemental providers
- Priority will be given to students as addressed in AB/SB 86 with a focus on students:
 - Experiencing homelessness
 - Residing in foster care
 - English Language Learners
 - Students receiving special education services; and
 - Disengaged students



Expanded Learning

- Application for elementary and K-8 sites is currently open and will close on Wednesday, March 24
- School site administrators, community partners and Youth Development are reaching out to students via newsletters, website and Facebook postings etc
- Youth Development is working with site administrators and community partners to assess the needs of students/families
- Hours and student enrollment numbers may be increased based on the need of each school community



Learning Hubs

- Learning Hubs offer a pathway to reentry for our schools. They provide opportunities to re-engage with students, additional adult support, much needed social emotional assistance, stable Wifi and connectivity, and a safe space for students to be while families are at work
- We are excited to continue Learning Hubs at 14 sites when we shift to in-person learning
 - It will look different given students will be with their teacher during in-person time, and then return to their hub space
- Current Hub students will have priority and will attend Monday-Friday
- Learning Hub schedules will remain unchanged (i.e. 8:00 AM – 2:30 PM or 9:00 AM – 3:30 PM)
- Program schedule:
 - Check in / Screening / Breakfast
 - Log-in to teacher's google classrooms, or attend in-person learning
 - Lunch
 - Academic Support and Enrichment



Learning Options Form

Complete the Learning Options Form by March 17 to tell our district whether your student will participate in-person or in distance learning.

Complete the form at [k12-schedule.com/ sac-city](https://k12-schedule.com/sac-city)
One form per student.



Student ID number is required.

The number may be found in Infinite Campus.

You might have also received text message with the ID number.



Learning Options Form

- **Learning Options Form Outreach - District Level**
 - Email to families
 - Social Media
 - Multiple texts with student ID number
 - Learning Hubs
 - Nutrition Services
 - Video

- **Outreach to Families - School Site Level**



Learning Options Form

- Principals Toolkit for Communication
 - PowerPoint/ Talking Points
 - Video: Reopening Update
 - Learning Options Forms Printouts
 - FAQs for Learning Options
 - FAQs for Learning Hubs
 - Links to Return to Health Videos
 - Video Script
 - Template Messages to staff
 - Outreach Strategies
- Next Steps
 - Ongoing Outreach, Options for families





Learning Options Form

Key Preliminary Findings

- Based on the most recent review of the results received, a total of *matched* families for 19,477 (approximately 49%) of currently enrolled students in grades K through 12 submitted a preference for engaging in learning.
- Of the results received thus far, 56% are preferring to return to in-person/concurrent learning (“in-person learning”) as opposed to continue in distance learning.
- By board member area, the percentage of responses requesting in-person learning ranges from 45% in Area 4 to 69% in Area 2.



Learning Options Form

Key Preliminary Findings

Grade Level

Preference for in-person learning appeared to be higher for families with students in elementary grades (ranging between 62% and 67%) as opposed to students in secondary grades (ranging between 43% and 57%).

Ethnicity / Race

There were vast differences in preferences for in-person learning when taking into account ethnicity / race. By ethnicity / race, the preference for in-person learning ranged between 34% for families of Asian students and 77% for families of White students.

Special Education

The preference for in-person learning for students participating in Special Education services largely mirrored the results for the district at-large regardless of student group.

English Proficiency

Interest in returning to in-person learning also varied by English proficiency, with families of Redesignated fluent English Proficient students being the least likely (36%) to prefer this option and families of English Only students being the most likely (64%) to prefer this option.

learn.scusd.edu

Learning
at SCUSD

Learning Options

Digital School Binder

Technical Support

Tutorials

Parent Toolkit



Learn about the two learning models to
choose from for the remainder of the school
year



**Distance Learning
Model**



**In-person/Concurrent
Learning Model**



Safety Response

- Emergency and Crisis: Response to stabilize physical harm / safety concerns that would impact students and staff, ultimately reducing the issue to “non emergency”.
- Non -emergency: District will coordinate resources to address these scenarios, adhering to due process, student / parent rights and mitigating liability.

Re Imagine School Safety: Non - Emergency



Law Enforcement / Emergency Responders

Admin Safety , Hearing Office, Bullying

Supportive Services / Community Organizations

Principal / Vice Principal

Teachers Campus Monitors

Parents / Caretakers

Student

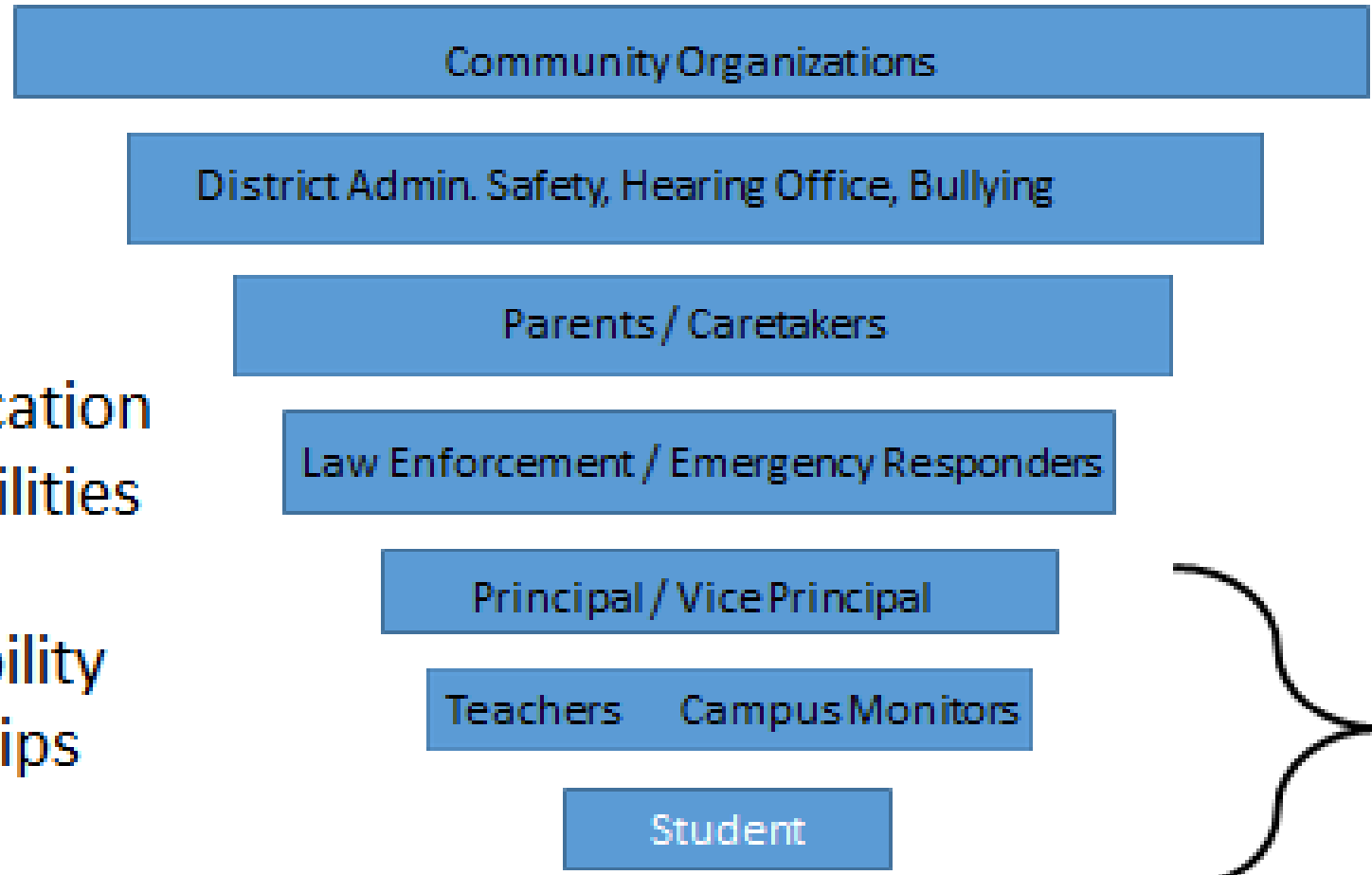
- Communication
- Responsibilities
- Response
- Accountability
- Relationships
- Training

Opportunities for restorative practices, diversion & interrupt the school to prison pipeline



Emergency and Crisis Response

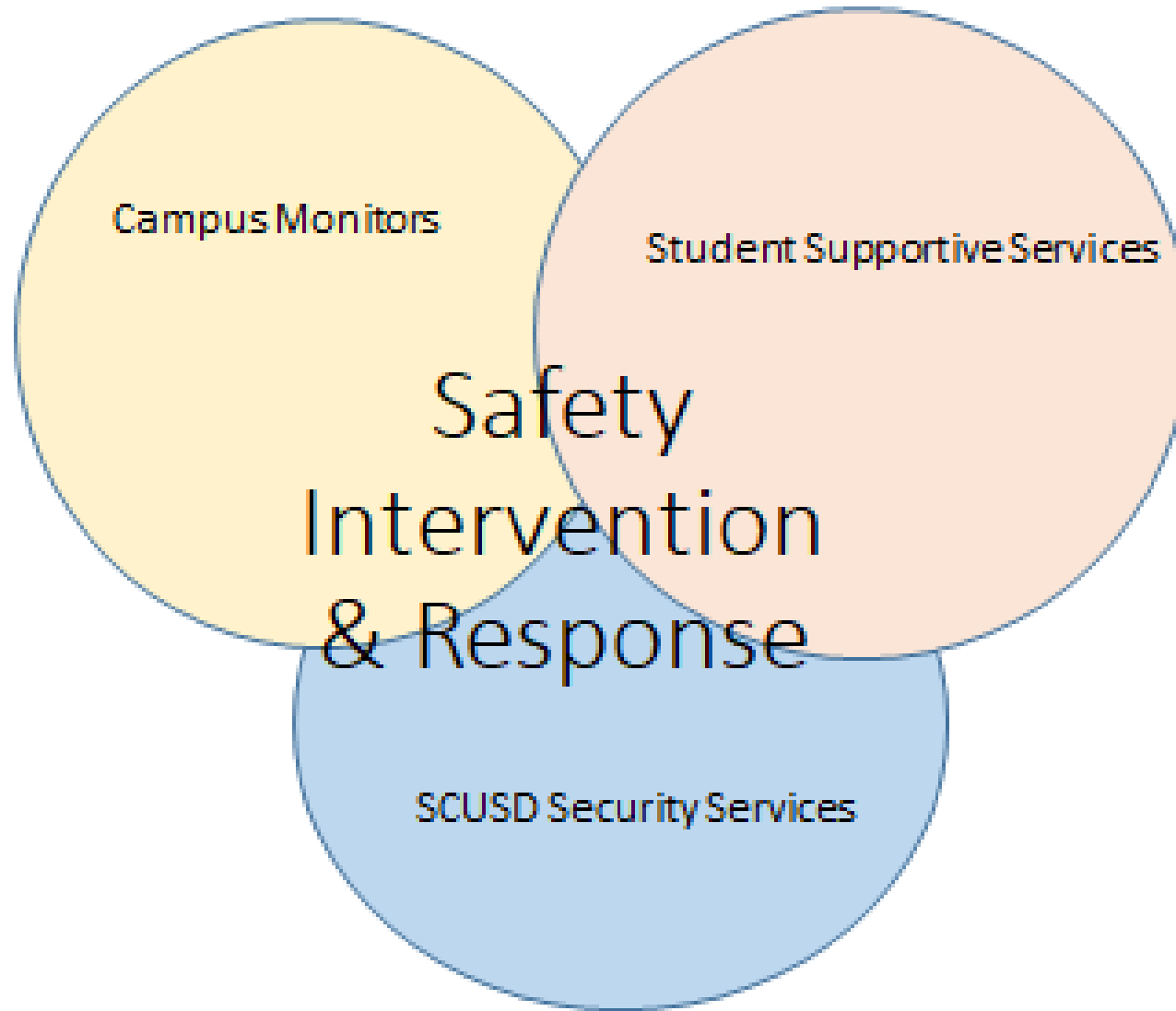
- Communication
- Responsibilities
- Response
- Accountability
- Relationships
- Training



First to Respond
"On Site"



District Led Safety and Intervention Team





Questions