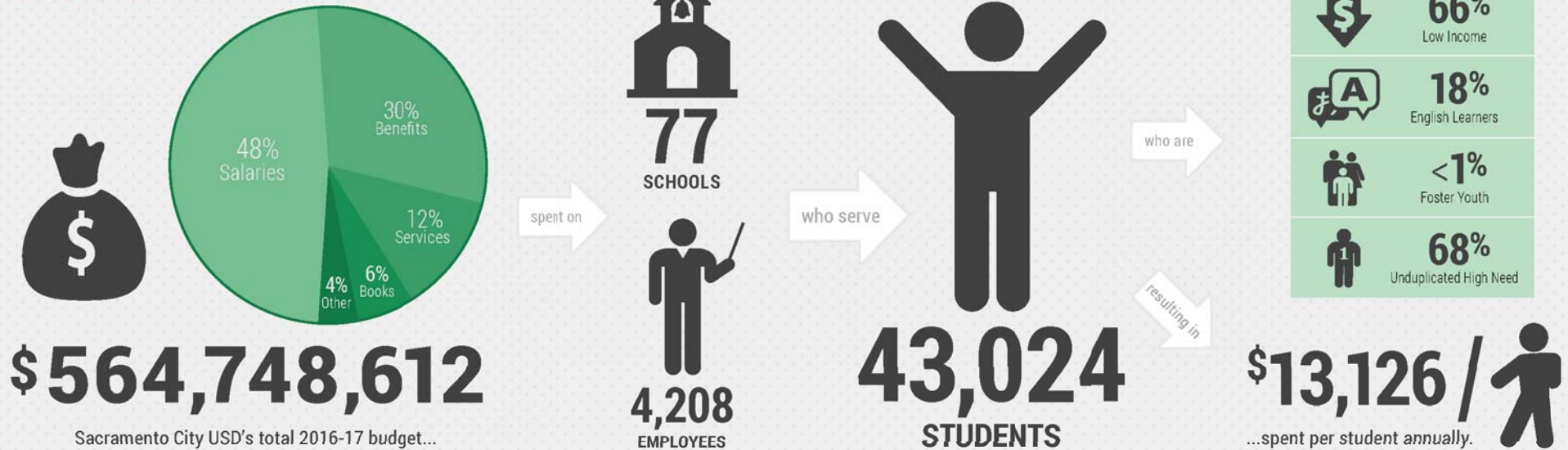


Local Control and Accountability Plan

District Overview



GOAL

#1

INVESTING
\$400,759,658



College & Career Ready Graduates

HIGHLIGHTED OUTCOMES & METRICS

	INCREASE COHORT GRADUATION RATE	↑ .65% Per Year
	INCREASE STUDENTS WHO MEET OR EXCEED STANDARDS ON CAASPP	↑ 2% Per Year
	INCREASE A-G COMPLETION RATE	↑ 3%
	INCREASE ENGLISH LEARNER RECLASSIFICATION RATE	↑ 1.5% Per Year
	OFFER ON-SITE COLLABORATION & JOB-EMBEDDED INSTRUCTIONAL COACHING	↑ 12 Instructional Minutes

HIGHLIGHTED ACTIONS, EXPENDITURES & TARGETS

• Basic Educational Program for All Students (incl. K-3 CSR 24:1)	\$273,932,042	
• Services for Students with Disabilities	\$63,166,000	
• Expanded Learning Services	\$11,400,000	
• High Quality Professional Learning	\$6,494,000	
• Recruit, Hire, & Retain Fully Credentialed Teachers	\$4,913,025	
• Academic & Career Counseling	\$4,913,025	
• Linked Learning & Career Technical Education, including CCGI	\$3,578,951	
• Site Funded Supplemental Materials	\$1,391,969	

Local Control and Accountability Plan



GOAL #2 INVESTING \$23,075,874

Clean, Healthy, & Safe Learning Environment

HIGHLIGHTED OUTCOMES & METRICS		
	CLEAN, WELCOMING, & WELL-MAINTAINED SCHOOLS	✓
	POSITIVE SCHOOL CLIMATE	✓
	INCREASE ATTENDANCE DISTRICT-WIDE	↑ 1%
	DECREASE HIGH SCHOOL DROPOUT RATE	↓ 2.9% Per Year
	SCHOOL STAFF TO SUPPORT HEALTHY SCHOOLS & STUDENTS	↑ Nurses & Social Workers

HIGHLIGHTED ACTIONS, EXPENDITURES & TARGETS		
• Maintain Staffing Levels of Custodians & Plant Managers	\$12,778,584	All Students
• District Nurses & Social Workers	\$2,097,488	
• Integrated Approach to Positive School Climate	\$1,725,000	
• District Connect Center Staff	\$476,000	
• Maintain Dropout Prevention Specialist	\$95,000	

GOAL #3 INVESTING \$2,470,750

Family & Community Engagement

HIGHLIGHTED OUTCOMES & METRICS		
	MAINTAIN BILINGUAL PARENT RESOURCE CENTER STAFF	✓
	MAINTAIN M.O.C. TRANSLATORS	↑ 8
	PARENT TEACHER HOME VISIT PROJECT	↑ Home Visits
	INCREASE WORKSHOP PARTICIPATION FOR PARENTS OF UNDUPLICATED STUDENTS	↑
	IMPROVED COMMUNICATION & ACCESS TO TECHNOLOGY	↑ Devices

HIGHLIGHTED ACTIONS, EXPENDITURES & TARGETS		
• Translator / Assessors	\$882,011	EL
• Parent Resource Center Staff	\$745,001	All Students
• Academic & Career Counseling	\$571,000	
• Maintain Stipends & Benefits for Home Visits	\$310,000	
• Fingerprinting for Parent Volunteers	\$20,000	

