

District Integrated Summary 2012-2013

SACRAMENTO CITY UNIFIED SCHOOL DISTRICT

Included in This Report:

- SAT®
- SAT Subject Tests™
- Advanced Placement Program®
- PSAT/NMSQT®
- ReadStep™

TABLE OF CONTENTS

OVERVIEW

Number of Students Taking SAT [®] , SAT Subject Tests, AP [®] , PSAT/NMSQT [®] and ReadiStep [™]	3
Percent of Test-Takers Self-Reported as Minority Students	4
Fee Waivers/Fee Reduction for SAT, AP and PSAT/NMSQT	5

SAT[®]

Performance and Participation Overview	7
Performance and Number of Test-Takers (Part 1 of 2)	8
Performance and Number of Test-Takers (Part 2 of 2)	9
Participation by Ethnic Group	10
Critical Reading Performance by Ethnic Group	11
Mathematics Performance by Ethnic Group	12
Writing Performance by Ethnic Group	13
Performance Based on Self-Reported PSAT/NMSQT Participation	14
Critical Reading Performance by Trends in Academic Preparation	15
Mathematics Performance by Trends in Academic Preparation	16
Writing Performance by Trends in Academic Preparation	

SAT Subject Tests[™]

Participation Overview	17
Percent Participation by Ethnic Group	18
Subject Tests Participation and Performance	19

AP[®]

Performance and Participation Overview	20
Exam Participation and Performance (Part 1 of 3)	21
Exam Participation and Performance (Part 2 of 3)	22
Exam Participation and Performance (Part 3 of 3)	23
Number of Examinations and Number of Examinations with Grades of 3, 4 or 5	24
Participation by Ethnic Groups Taking One or More Exam	25

AP[®] (continued)

Participation by Ethnic Groups with Grades 3, 4 or 5	26
--	----

PSAT/NMSQT[®]

Sophomore Performance and Participation Overview	27
Junior Performance and Participation Overview	28
Sophomore Participation by Ethnic Group	29
Sophomore Critical Reading Performance by Ethnic Group	30
Sophomore Mathematics Performance by Ethnic Group	31
Sophomore Writing Performance by Ethnic Group	32
Junior Participation by Ethnic Group	33
Junior Critical Reading Performance by Ethnic Group	34
Junior Mathematics Performance by Ethnic Group	35
Junior Writing Performance by Ethnic Group	36

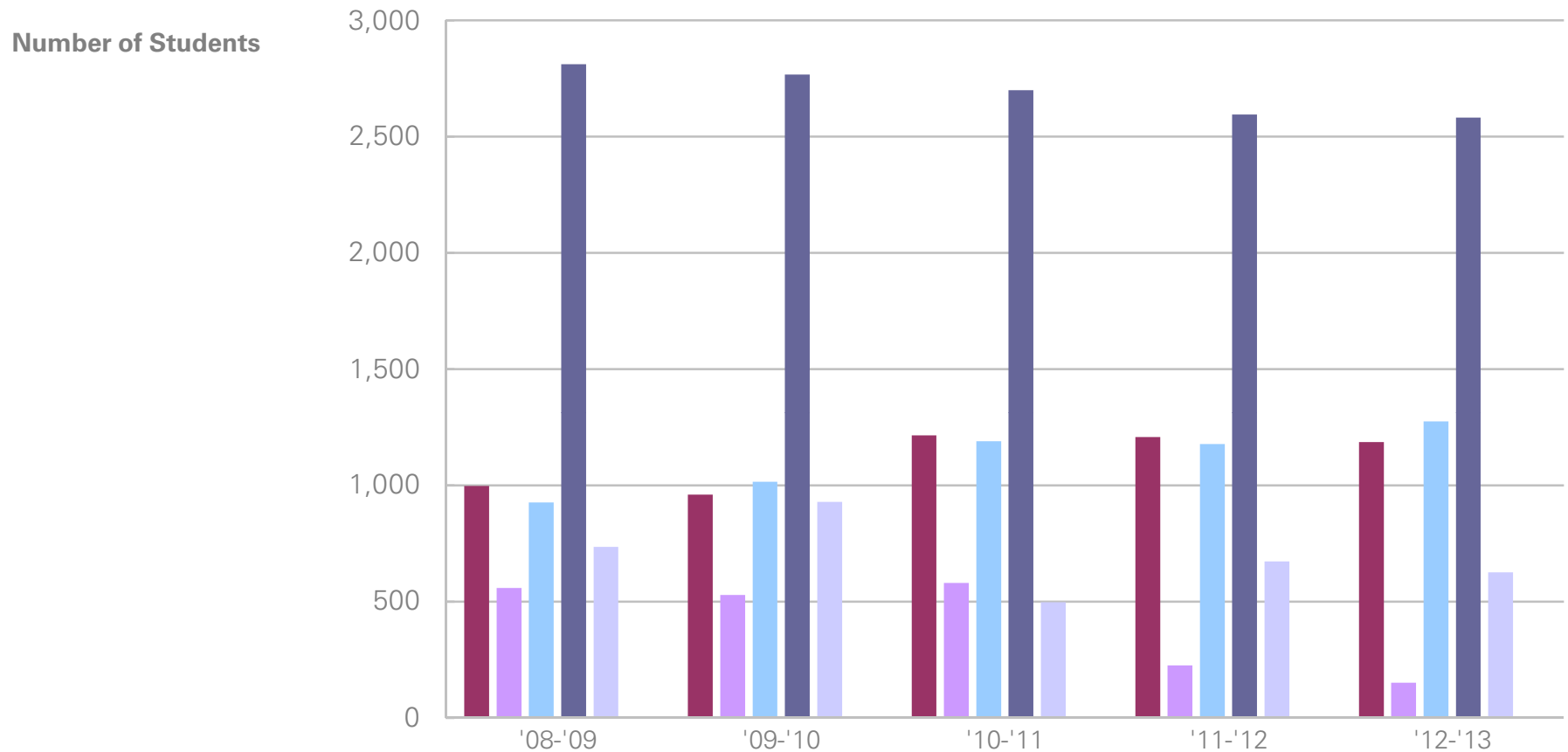
Summary by High School

37

Data Notes

38

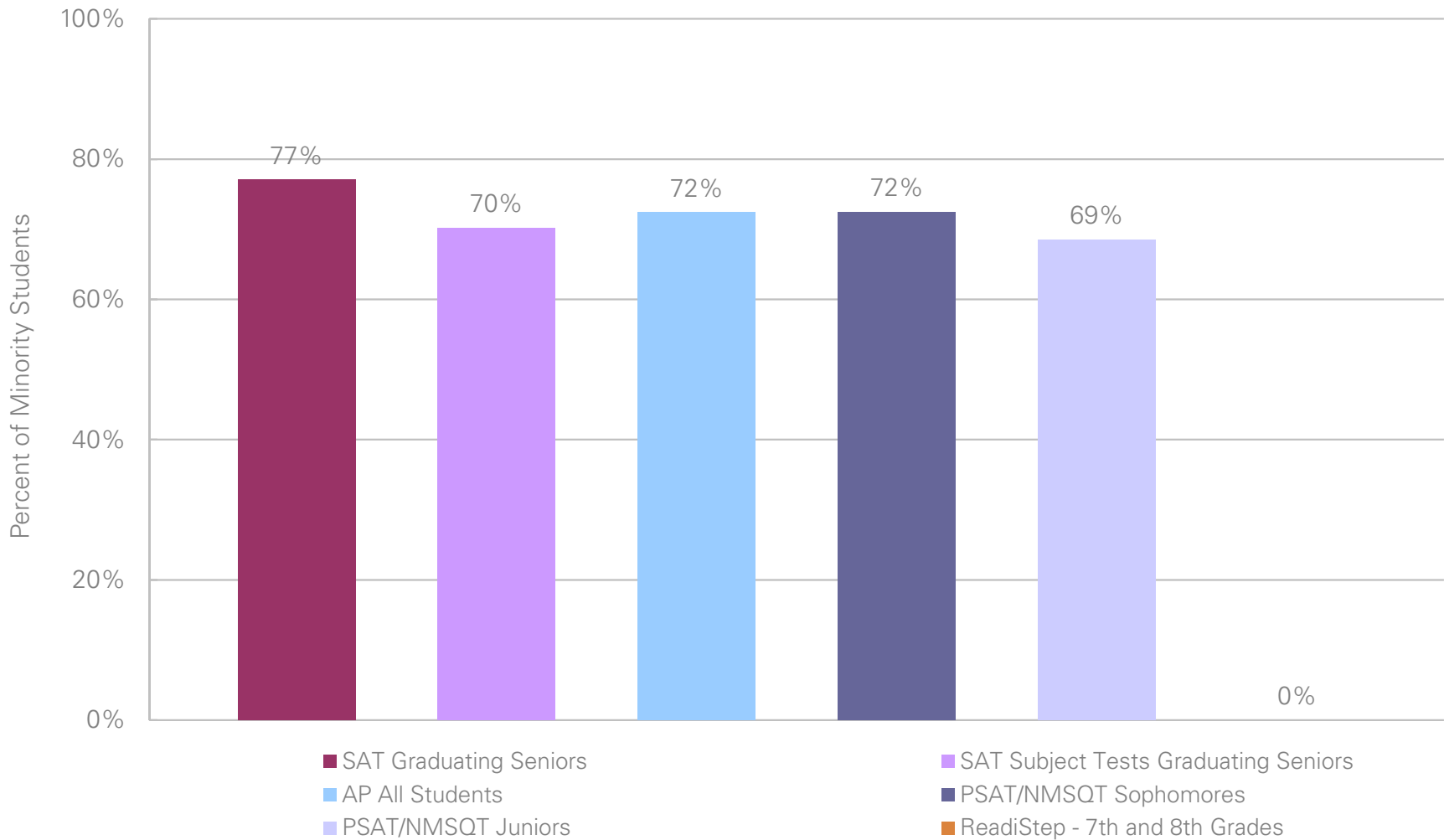
OVERVIEW: Number of Students Taking SAT, SAT Subject Tests, AP, PSAT/NMSQT and ReadStep.



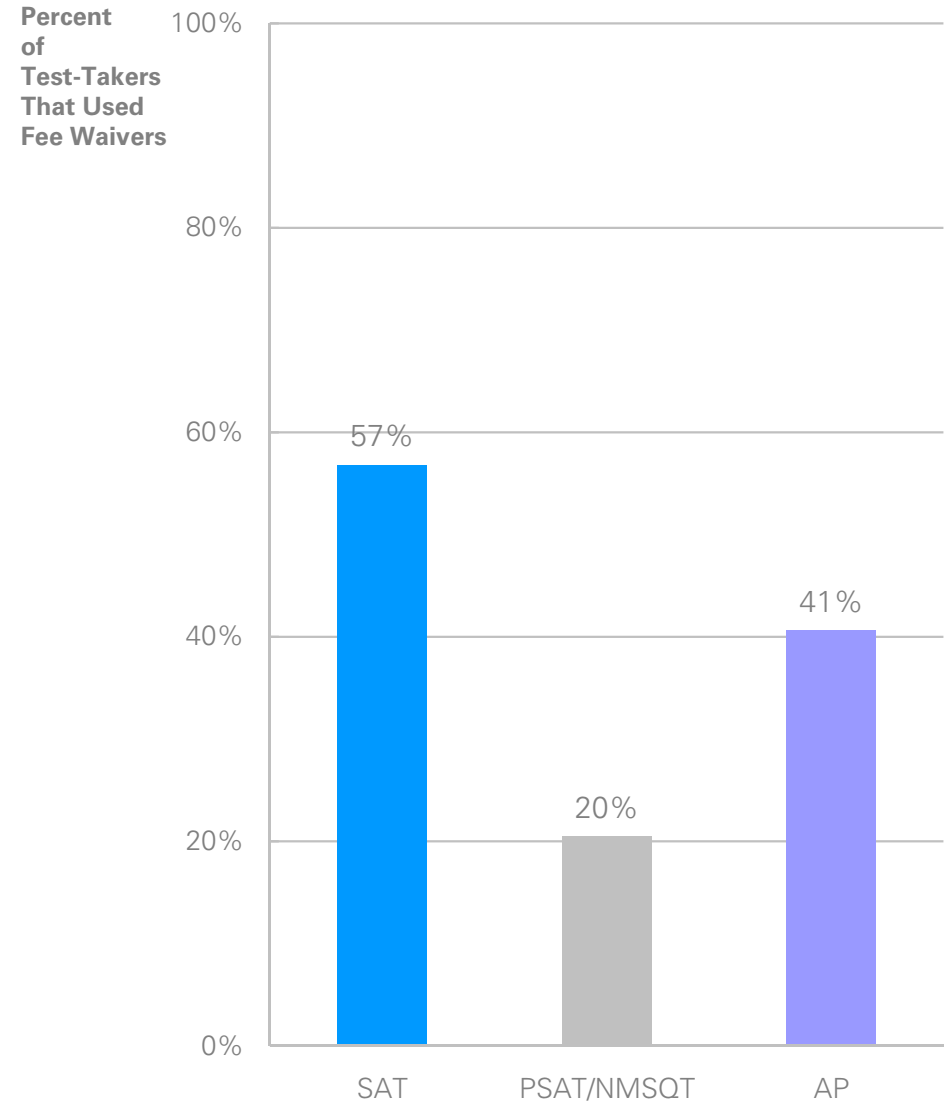
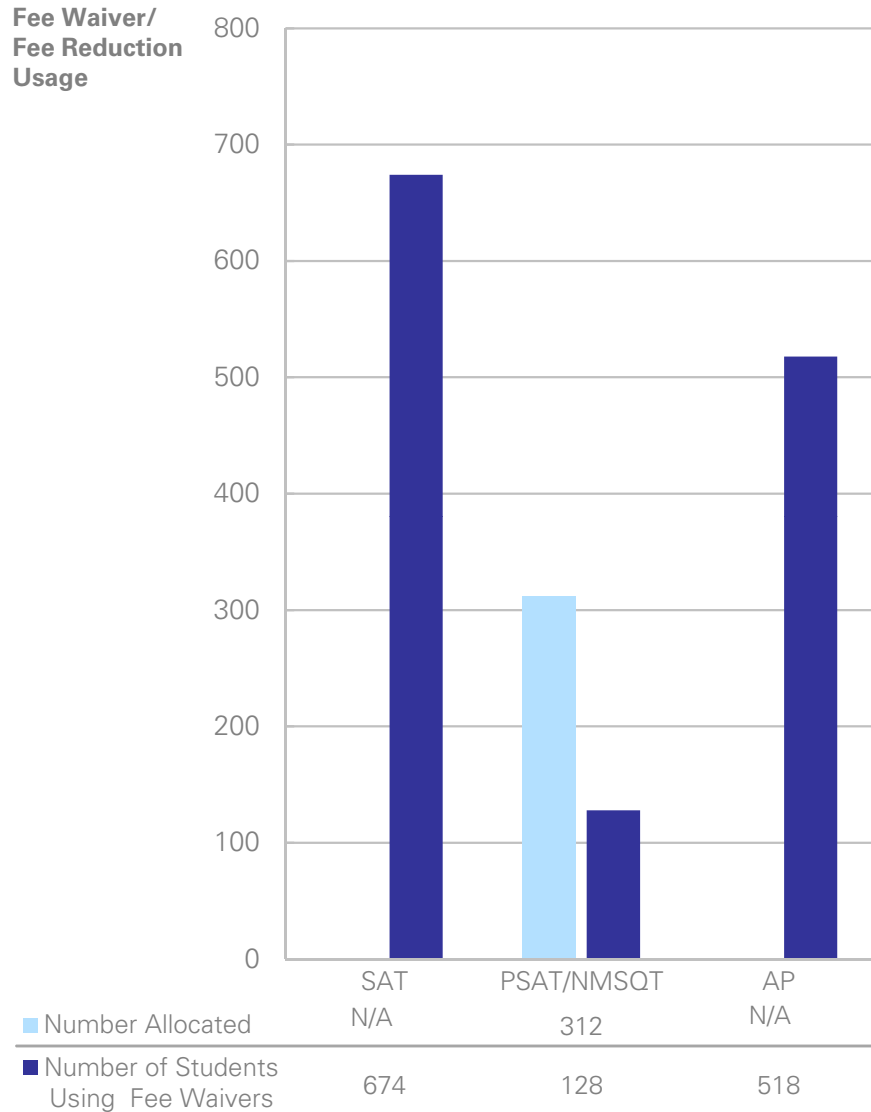
■ SAT Graduating Seniors *	997	960	1,215	1,208	1,186
■ SAT Subject Tests Graduating Seniors *	559	529	580	226	151
■ AP All Students	926	1,015	1,190	1,178	1,275
■ PSAT/NMSQT Sophomores	2,812	2,767	2,700	2,595	2,582
■ PSAT/NMSQT Juniors	735	929	497	673	626
■ ReadStep - 7th and 8th Graders	-	-	0	0	0

* Please see the Data Notes page at the end of this report for a note on interpretation of trends in SAT school participation.

OVERVIEW: Percent of Test-Takers Self-Reported as Minority Students



OVERVIEW: Fee Waivers/Fee Reduction for SAT, AP and PSAT/NMSQT



Note: SAT and AP fee reduction allocation numbers are not available. The number of PSAT/NMSQT fee waivers reported reflects those students whose test fees were covered by a fee waiver or an agreement with the state or district designed to support students underrepresented in college-going populations. As part of such an agreement, the state or districts paid the test fees for juniors at a reduced cost.

District Integrated Summary 2012-2013

SACRAMENTO CITY UNIFIED SCHOOL DISTRICT

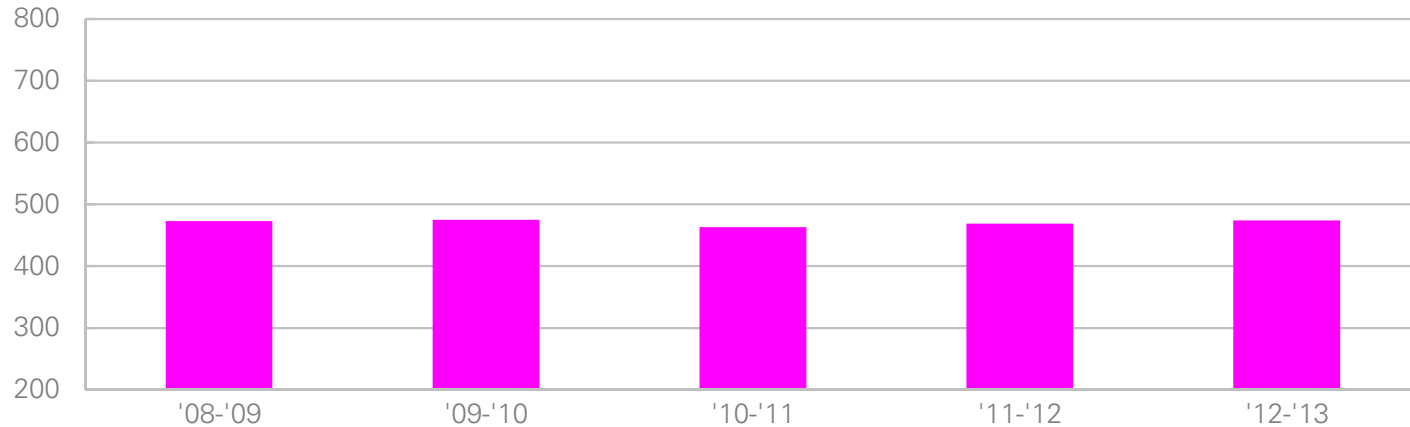


SAT: Participation and Performance Overview

		SACRAMENTO CITY UNIFIED SCHOOL DISTRICT					California- Public Schools					Total Group - Public Schools				
		# of Test-Takers	% of Total	Mean Critical Reading	Mean Mathematics	Mean Writing	# of Test-Takers	% of Total	Mean Critical Reading	Mean Mathematics	Mean Writing	# of Test-Takers	% of Total	Mean Critical Reading	Mean Mathematics	Mean Writing
All	Total	1,186	100.0%	474	492	464	200,900	100.0%	492	508	489	1,295,267	100.0%	491	503	480
	Change from last year	-1.8%		+5	-2	-1	+3.3%		+1	-2	-2	+0.8%		0	-2	-1
Gender	Female	633	53.4%	469	471	466	111,824	55.7%	487	490	489	704,595	54.4%	489	489	484
	Change from last year	-6.6%		+4	-5	-2	+3.4%		+2	-1	-4	+0.8%		+1	-1	-2
Gender	Male	553	46.6%	480	516	462	89,076	44.3%	499	531	488	590,672	45.6%	495	520	475
	Change from last year	+4.3%		+5	0	+2	+3.2%		+1	-3	-1	+0.9%		0	-4	+1
Ethnic Group	American Indian	11	0.9%	512	499	490	1,294	0.6%	496	496	479	8,262	0.6%	477	481	456
	Change from last year	+57.1%		-39	-14	-33	+6.4%		+2	0	-3	+4.6%		-2	-4	-2
	Asian	468	39.5%	454	496	444	42,547	21.2%	525	573	525	125,661	9.7%	523	574	520
	Change from last year	-9.1%		+6	-5	-4	+1.0%		+3	0	-4	+1.7%		+4	+1	-2
	Black	126	10.6%	432	429	422	12,953	6.4%	444	436	436	182,436	14.1%	426	425	412
	Change from last year	-14.9%		-7	-12	-11	-1.1%		+3	-1	-1	-1.9%		+2	0	0
	Hispanic Overall	266	22.4%	453	462	447	75,105	37.4%	443	452	441	244,588	18.9%	445	457	437
	Change from last year	+10.8%		-1	-5	-3	+7.6%		+3	0	0	+6.5%		+2	-1	0
	<i>Mexican American</i>	207	17.5%	449	460	447	50,193	25.0%	446	457	444	103,312	8.0%	446	461	438
	Change from last year	+5.1%		-1	-4	0	+8.5%		+2	-1	-1	+8.1%		+1	-3	-2
	<i>Puerto Rican</i>	5	0.4%	422	452	412	692	0.3%	495	490	483	21,491	1.7%	452	452	440
	Change from last year	0.0%		-98	-66	-136	-1.4%		+9	+2	+4	+1.6%		+4	+1	+3
	<i>Other Hispanic</i>	54	4.6%	468	471	450	24,220	12.1%	434	440	434	119,785	9.2%	442	454	435
	Change from last year	+42.1%		+4	-3	-2	+5.9%		+4	0	+1	+6.0%		+1	-1	0
	White	248	20.9%	546	544	530	57,129	28.4%	541	549	534	665,815	51.4%	522	531	508
	Change from last year	+19.2%		-5	-2	-9	+1.0%		+1	-2	-1	-1.1%		-1	-2	0
Other	43	3.6%	510	509	493	7,574	3.8%	516	524	513	39,305	3.0%	496	501	485	
Change from last year	-24.6%		+25	+17	+17	-4.4%		+4	0	-2	+0.3%		+1	+1	0	
No Response	24	2.0%	510	505	505	4,298	2.1%	491	497	481	29,200	2.3%	462	465	447	
Change from last year	-27.3%		+20	+27	+41	+18.0%		+11	+9	+8	+16.5%		+3	+2	+5	

SAT: Performance and Number of Test-Takers (Part 1 of 2)

Critical Reading Mean

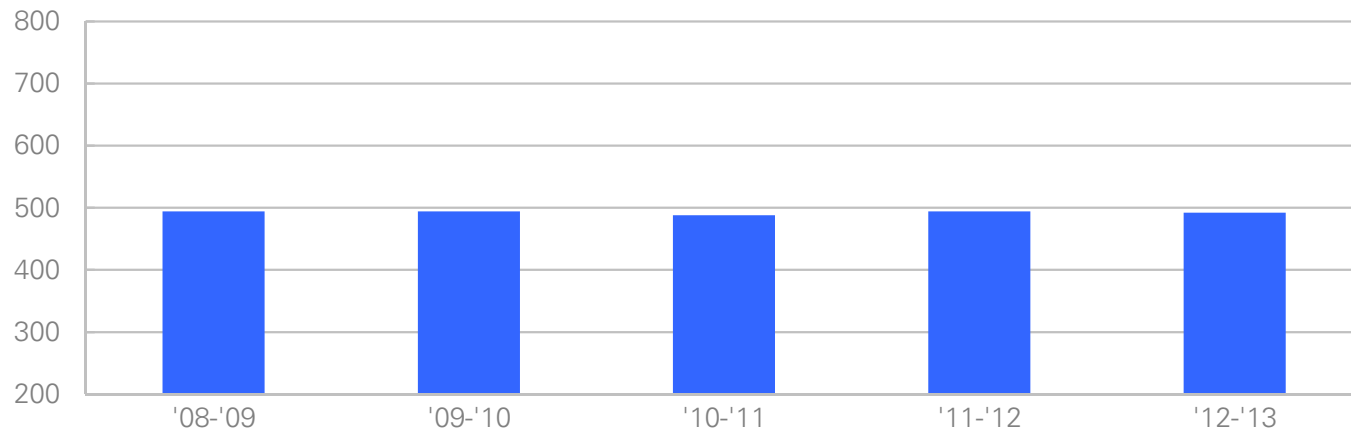


■ Critical Reading Mean

Number of Test-Takers

473	475	463	469	474
997	960	1,215	1,208	1,186

Mathematics Mean



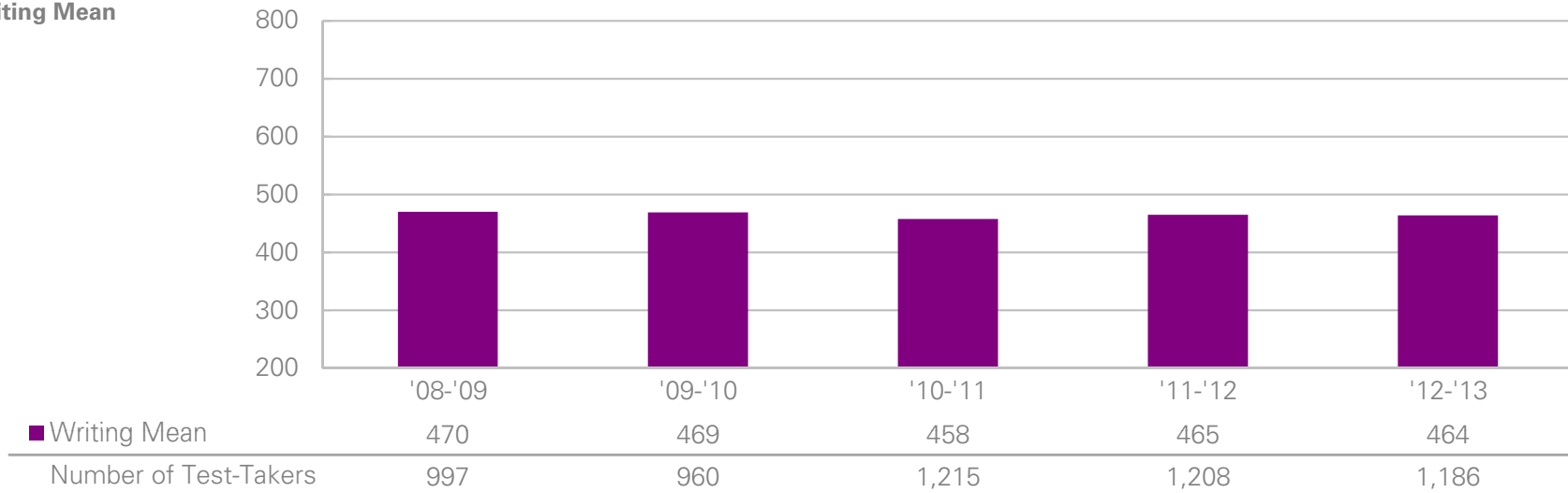
■ Mathematics Mean

Number of Test-Takers

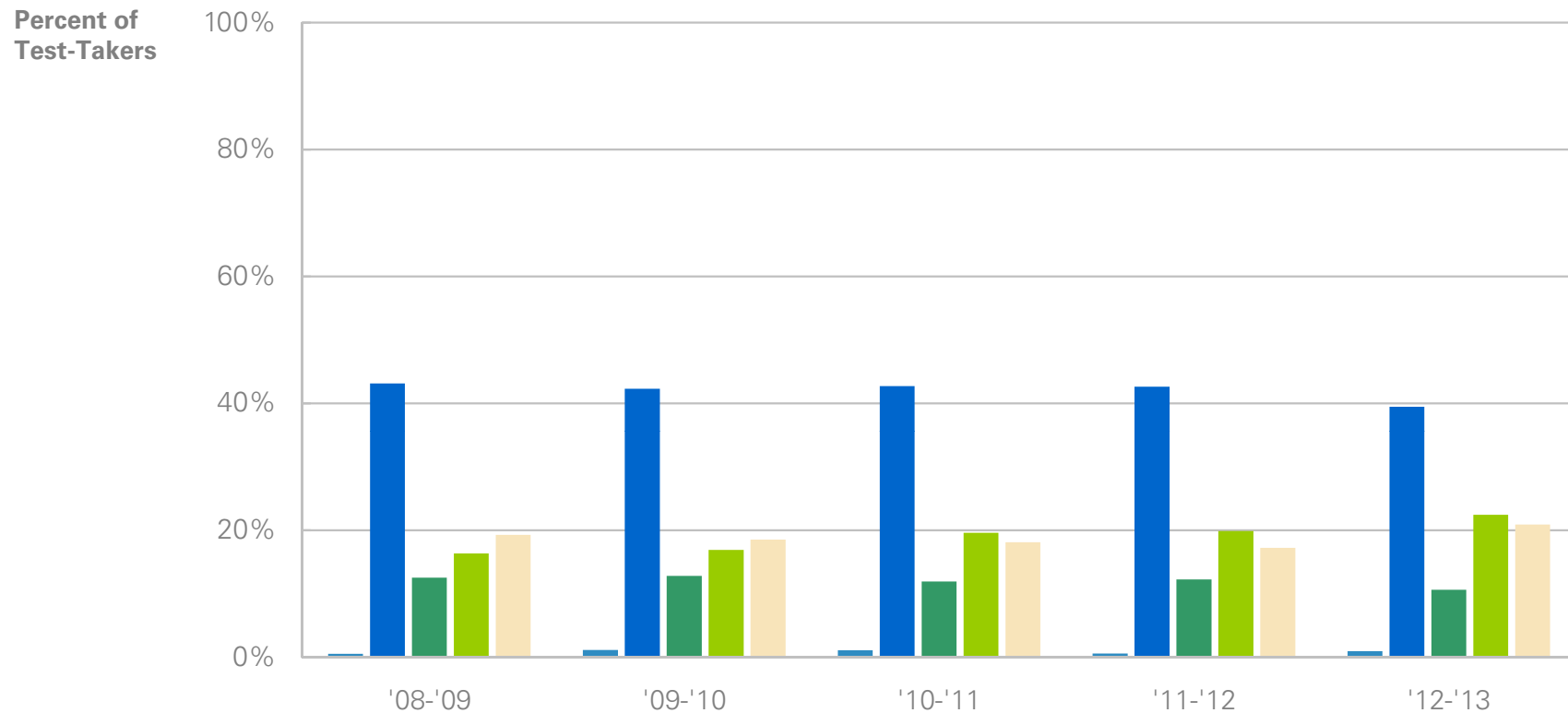
494	494	488	494	492
997	960	1,215	1,208	1,186

SAT: Performance and Number of Test-Takers (Part 2 of 2)

Writing Mean



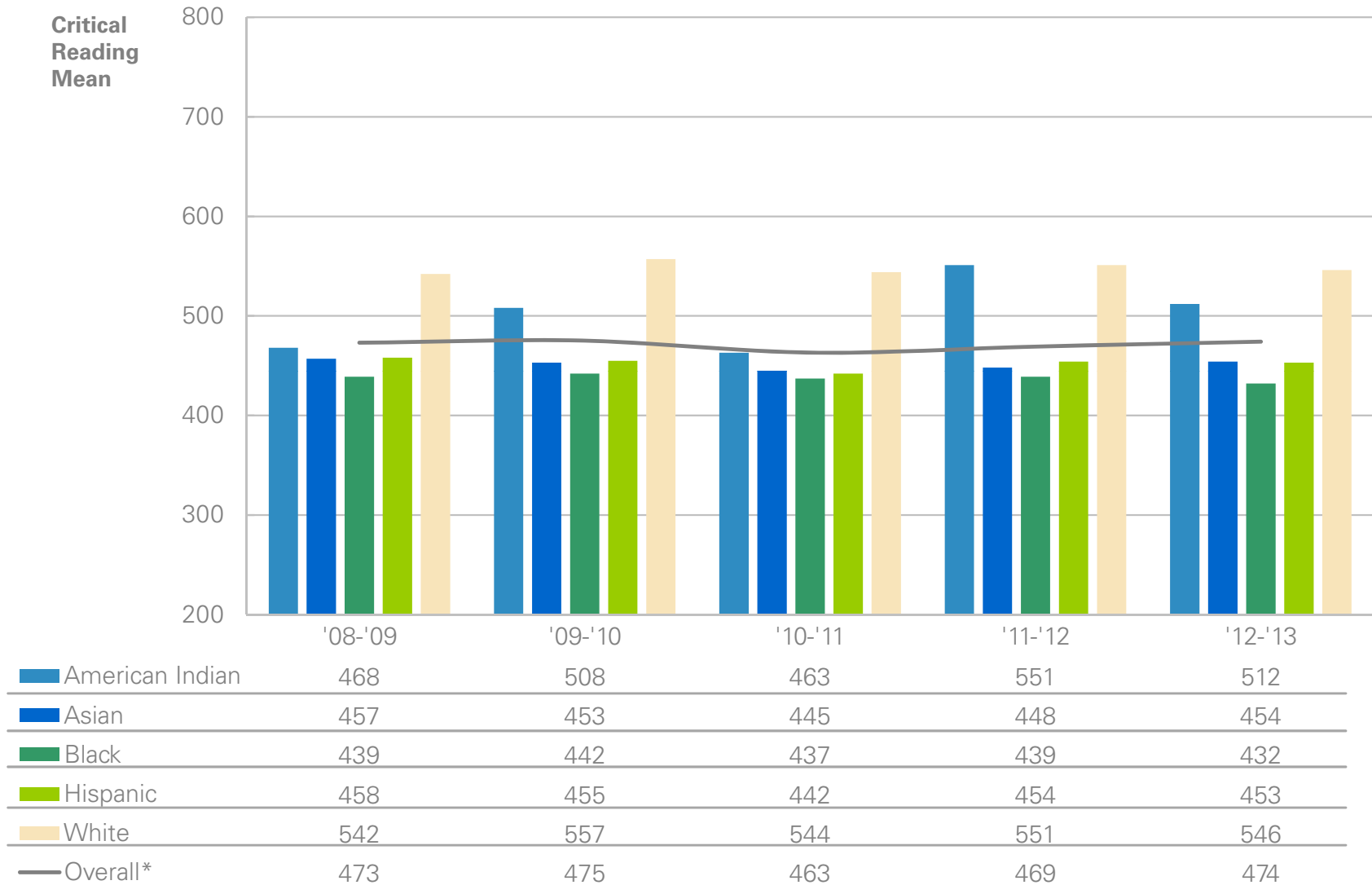
SAT: Participation by Ethnic Group



Number of Students Taking SAT:

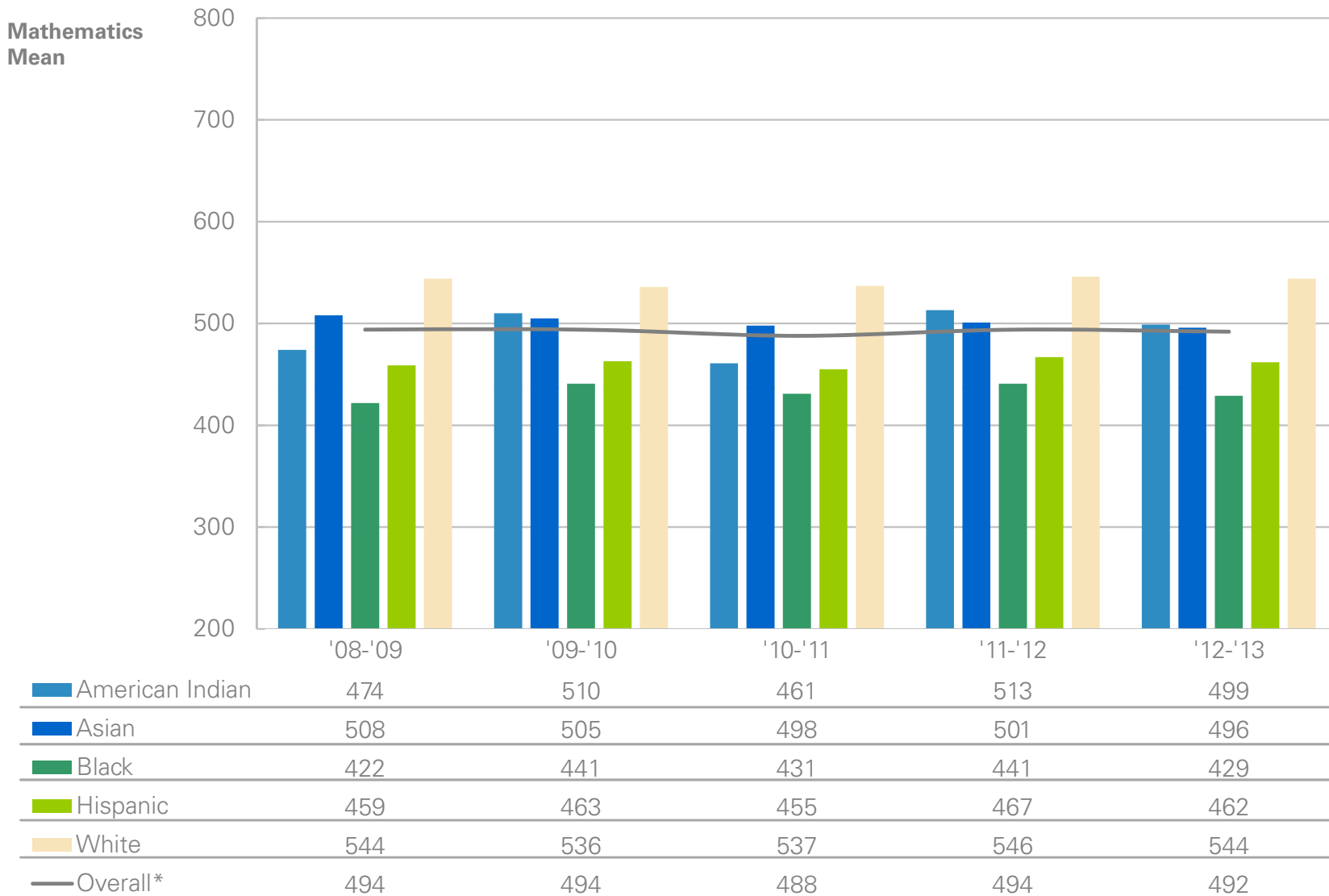
American Indian	5	11	13	7	11
Asian	430	406	519	515	468
Black	125	123	145	148	126
Hispanic	163	162	238	240	266
White	192	178	220	208	248
Other	44	57	50	57	43
No Response	38	23	30	33	24
Total	997	960	1,215	1,208	1,186

SAT: Critical Reading Performance by Ethnic Group



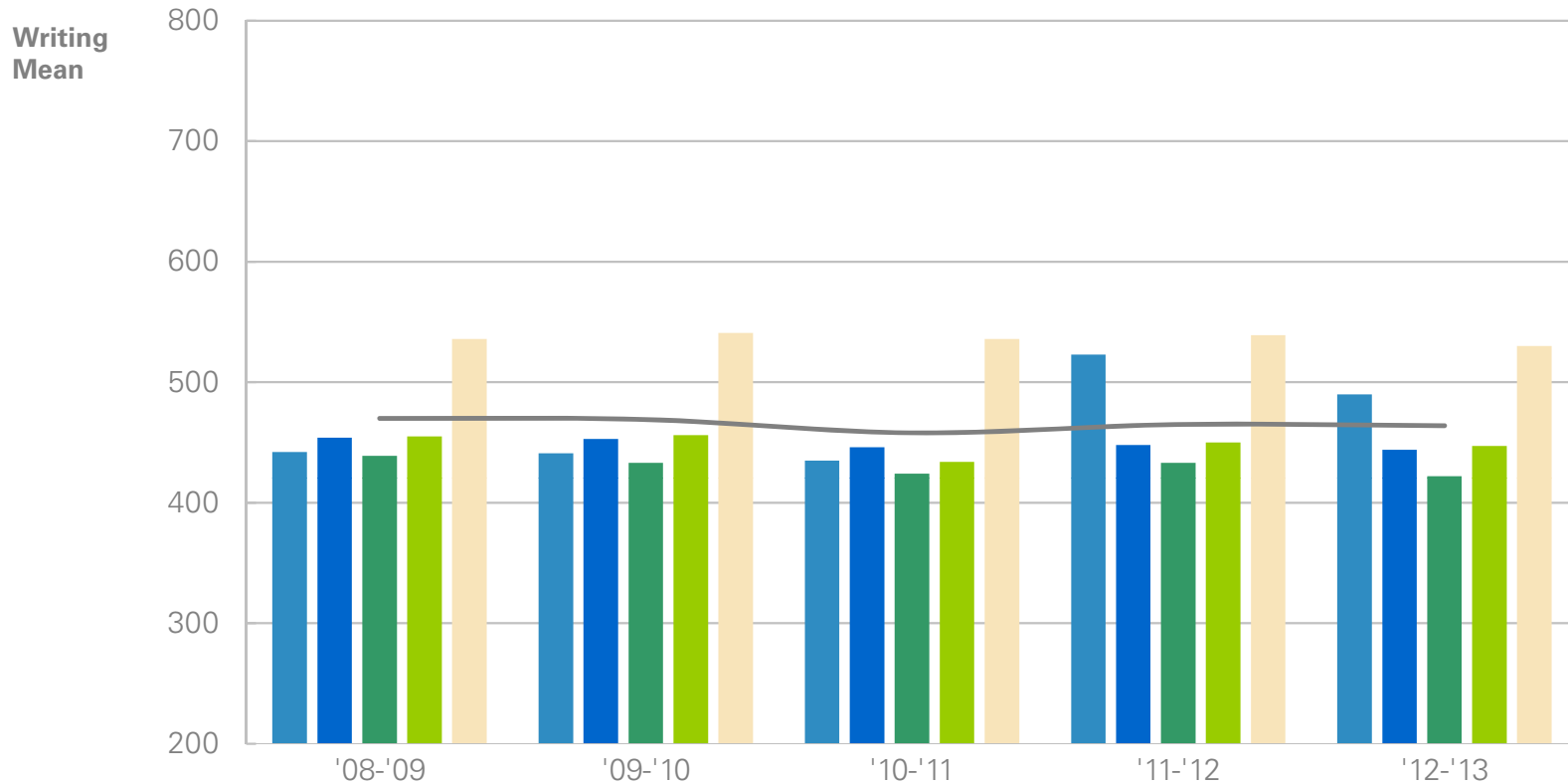
*Represents the mean score for all students, including those who responded "Other" or "No Response." Please see the Self-Reported Ethnic Group Data Note for further details.

SAT: Mathematics Performance by Ethnic Group



*Represents the mean score for all students, including those who responded "Other" or "No Response." Please see the Self-Reported Ethnic Group Data Note for further details.

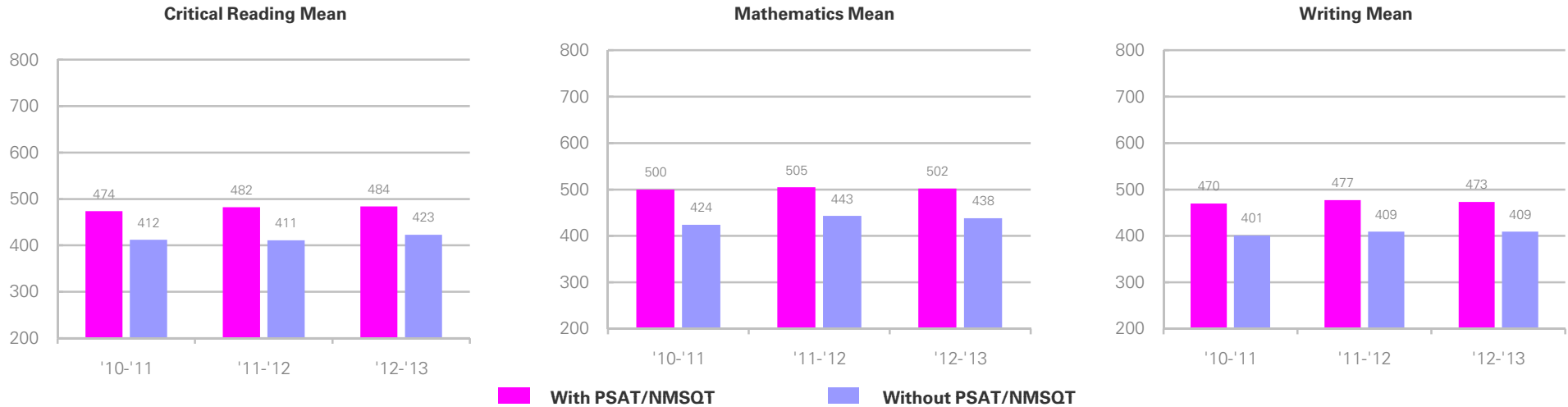
SAT: Writing Performance by Ethnic Group



American Indian	442	441	435	523	490
Asian	454	453	446	448	444
Black	439	433	424	433	422
Hispanic	455	456	434	450	447
White	536	541	536	539	530
Overall*	470	469	458	465	464

*Represents the mean score for all students, including those who responded "Other" or "No Response." Please see the Self-Reported Ethnic Group Data Note for further details.

SAT: Performance Based on Self-Reported PSAT/NMSQT Participation

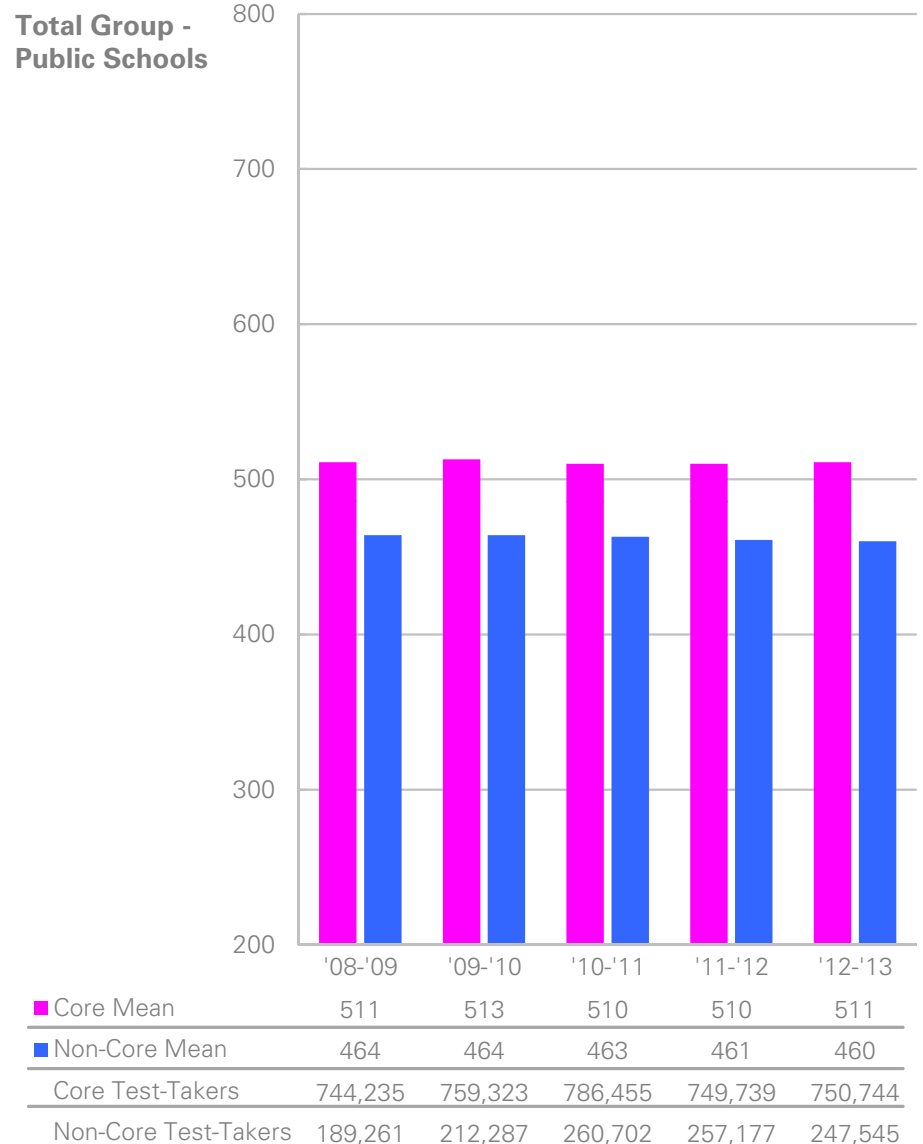
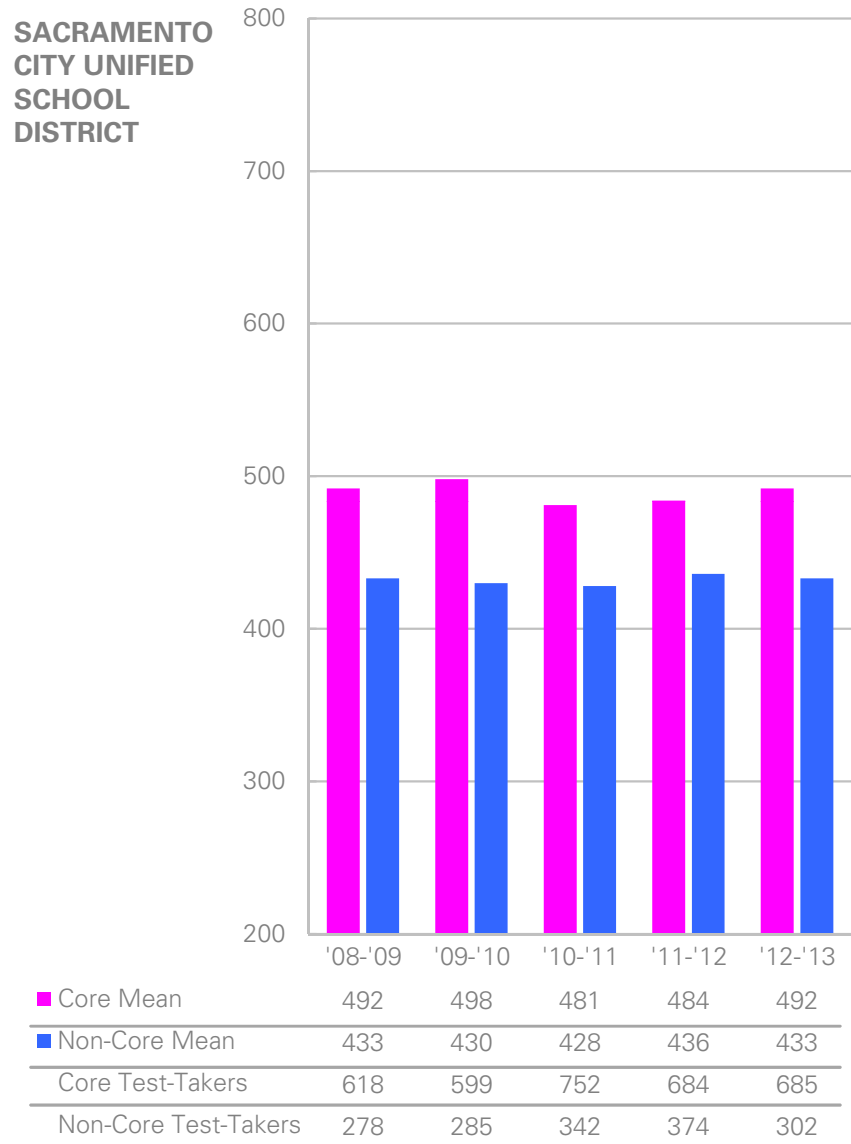


Graduating Class of 2013, Students Taking:	Number of Test-Takers	Critical Reading Mean	Mathematics Mean	Writing Mean
SAT (All Students)	1,186	474	492	464
SAT with PSAT/NMSQT (Junior)	145	476	493	471
SAT with PSAT/NMSQT (Sophomore or younger)	461	469	484	455
SAT with PSAT/NMSQT (Junior and Sophomore or younger)	313	511	534	501
SAT without PSAT/NMSQT	167	423	438	409
SAT with no response to taking the PSAT/NMSQT	100	466	485	467

Graduating Class of 2012, Students Taking:	Number of Test-Takers	Critical Reading Mean	Mathematics Mean	Writing Mean
SAT (All Students)	1,208	469	494	465
SAT with PSAT/NMSQT (Junior)	129	453	475	445
SAT with PSAT/NMSQT (Sophomore or younger)	532	466	489	458
SAT with PSAT/NMSQT (Junior and Sophomore or younger)	289	527	549	525
SAT without PSAT/NMSQT	204	411	443	409
SAT with no response to taking the PSAT/NMSQT	54	453	482	461

Graduating Class of 2011, Students Taking:	Number of Test-Takers	Critical Reading Mean	Mathematics Mean	Writing Mean
SAT (All Students)	1,215	463	488	458
SAT with PSAT/NMSQT (Junior)	145	438	460	436
SAT with PSAT/NMSQT (Sophomore or younger)	510	471	494	465
SAT with PSAT/NMSQT (Junior and Sophomore or younger)	342	493	526	491
SAT without PSAT/NMSQT	181	412	424	401
SAT with no response to taking the PSAT/NMSQT	37	424	457	427

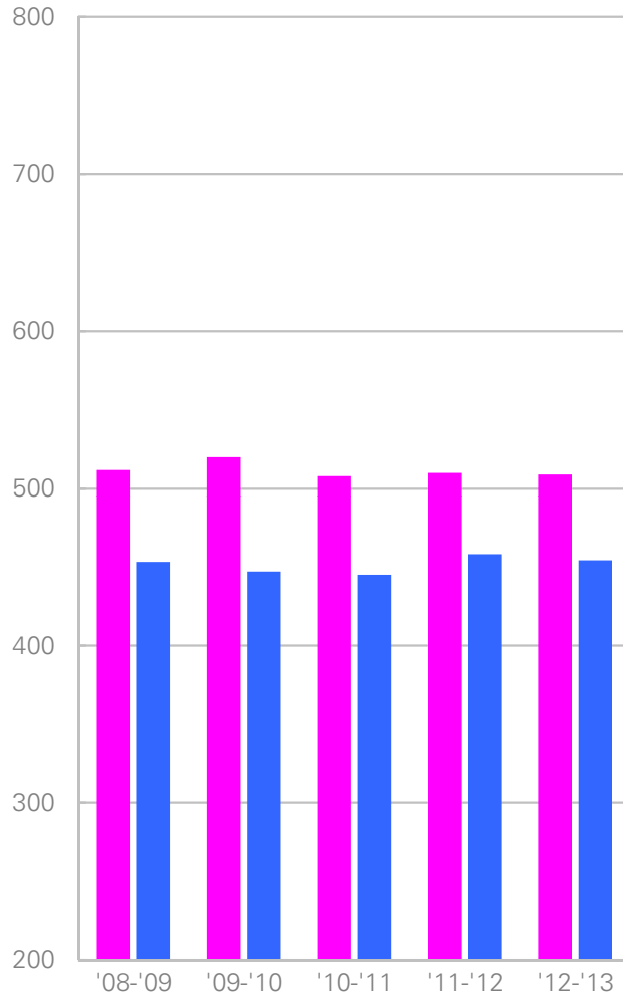
SAT: Critical Reading Performance by Trends in Academic Preparation



Note: Occasional updates are made to the optional Student Questionnaire to improve student response rates. Fluctuations from year to year should be interpreted with appropriate consideration. Please see the Data Notes for definitions of Core and Non-Core.

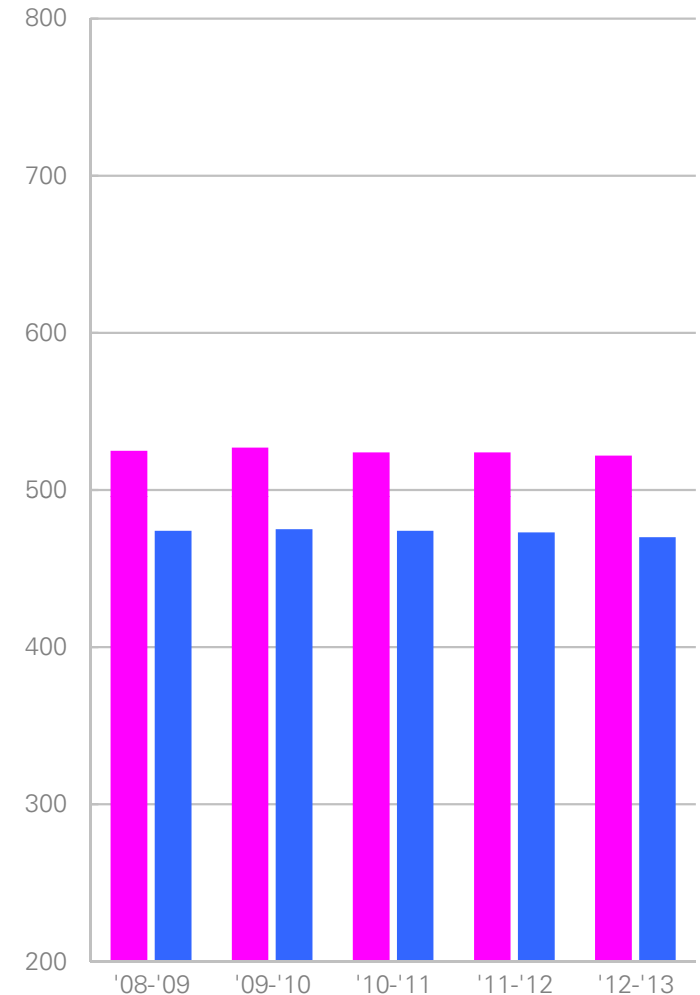
SAT: Mathematics Performance by Trends in Academic Preparation

SACRAMENTO CITY UNIFIED SCHOOL DISTRICT



Core Mean	512	520	508	510	509
Non-Core Mean	453	447	445	458	454
Core Test-Takers	618	599	752	684	685
Non-Core Test-Takers	278	285	342	374	302

Total Group - Public Schools

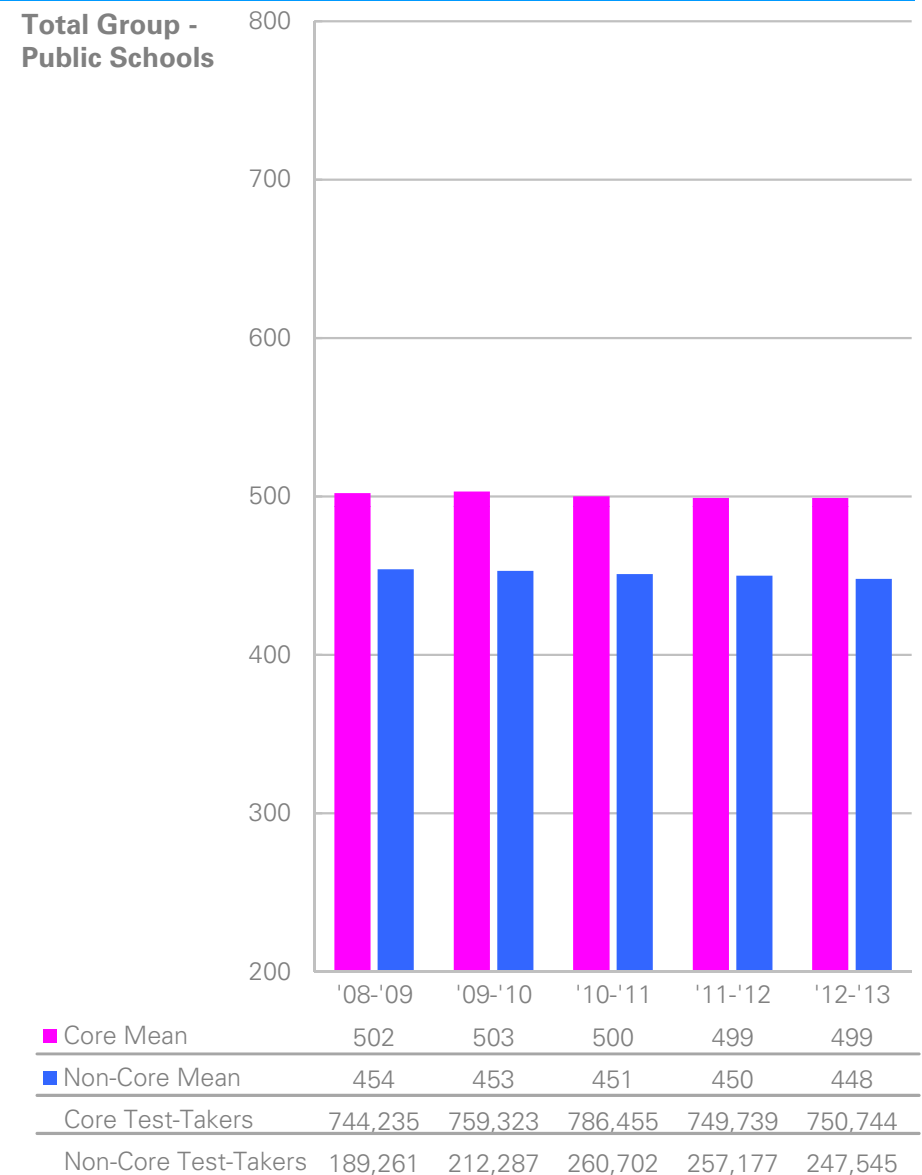
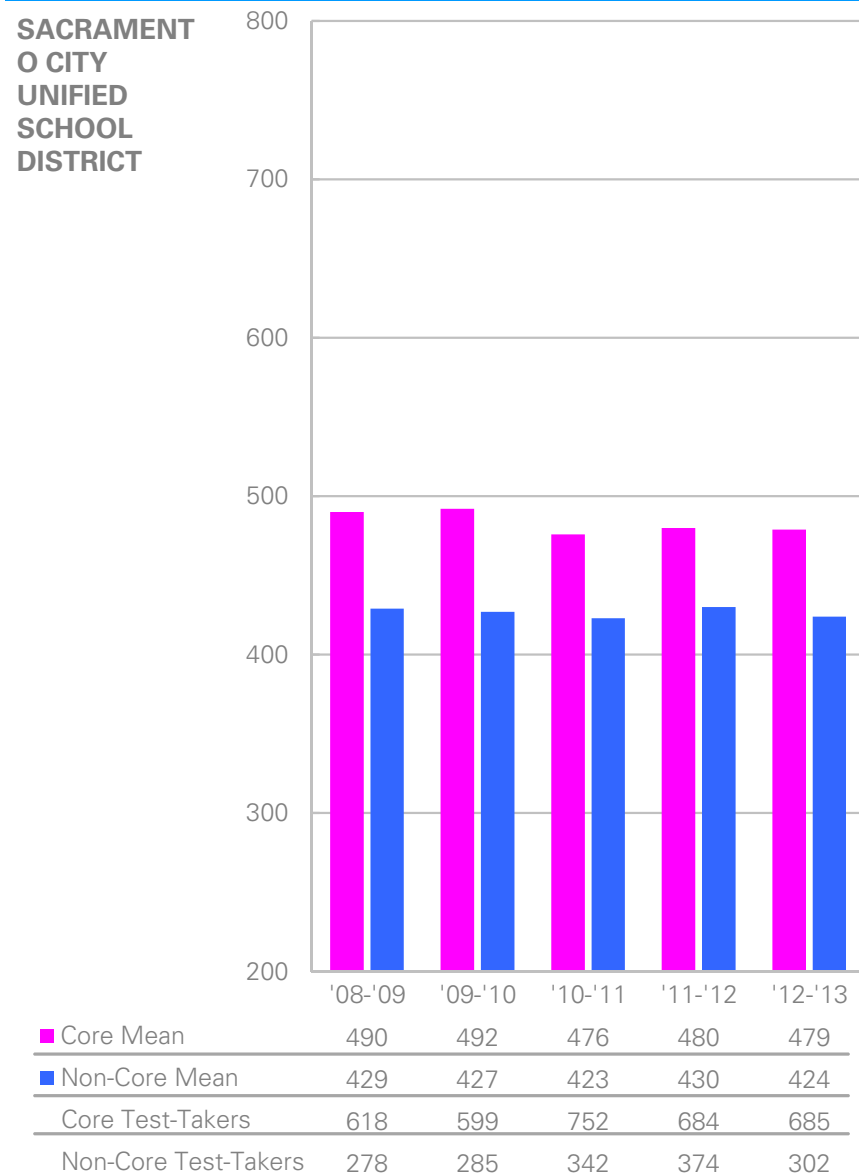


Core Mean	525	527	524	524	522
Non-Core Mean	474	475	474	473	470
Core Test-Takers	744,235	759,323	786,455	749,739	750,744
Non-Core Test-Takers	189,261	212,287	260,702	257,177	247,545

Note: Occasional updates are made to the optional Student Questionnaire to improve student response rates. Fluctuations from year to year should be interpreted with appropriate consideration. Please see the Data Notes for definitions of Core and Non-Core.

SACRAMENTO CITY UNIFIED SCHOOL DISTRICT

SAT: Writing Performance by Trends in Academic Preparation

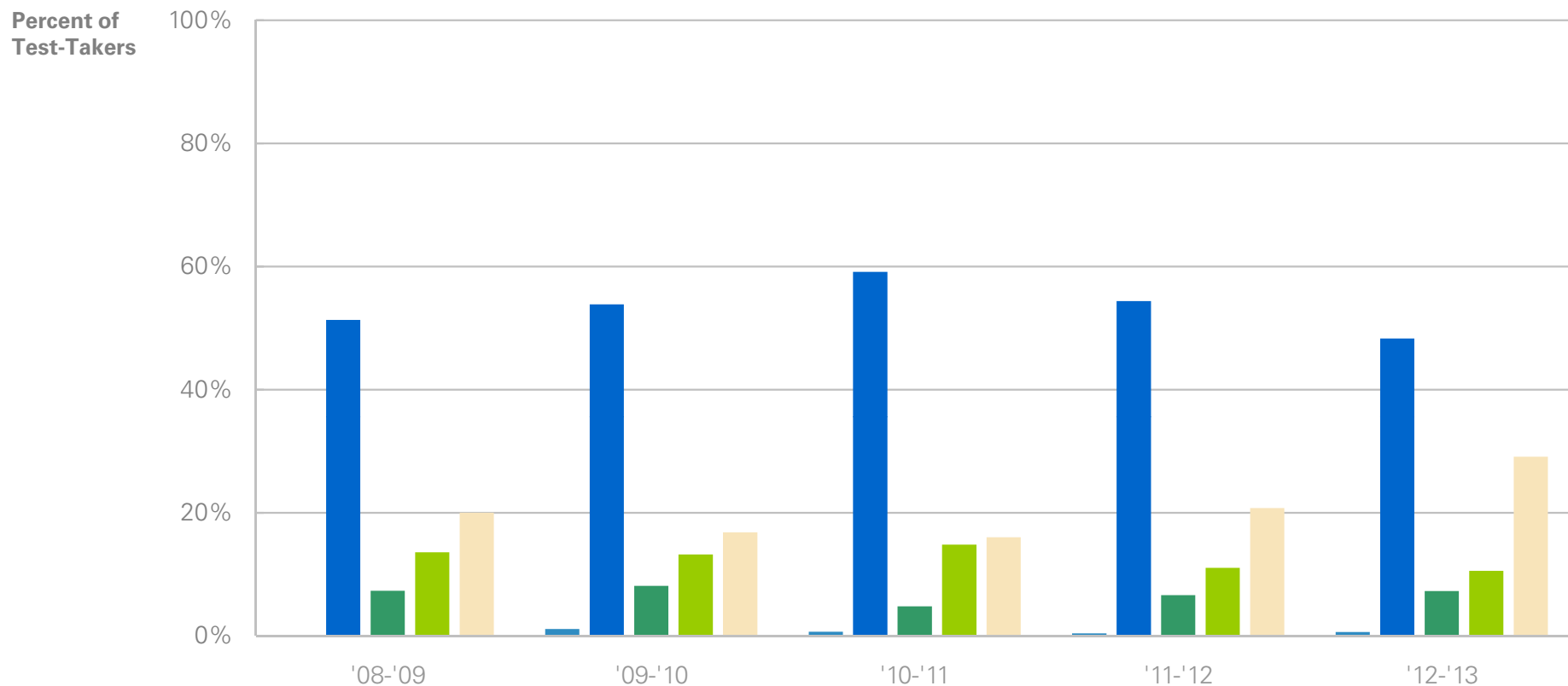


Note: Occasional updates are made to the optional Student Questionnaire to improve student response rates. Fluctuations from year to year should be interpreted with appropriate consideration. Please see the Data Notes for definitions of Core and Non-Core.

SAT Subject Tests: Participation Overview

		SACRAMENTO CITY UNIFIED SCHOOL DISTRICT			California- Public Schools			Total Group - Public Schools		
		# of Test-Takers	% of Total	# of Tests Taken	# of Test-Takers	% of Total	# of Tests Taken	# of Test-Takers	% of Total	# of Tests Taken
All	Total	151	100.0%	371	45,841	100.0%	113,805	154,858	100.0%	384,794
	Change from last year	-33.2%		-30.3%	-14.1%		-15.8%	-7.4%		-8.3%
Gender	Female	65	43.0%	165	24,959	54.4%	61,754	82,394	53.2%	204,321
	Change from last year	-50.0%		-47.1%	-15.8%		-17.6%	-8.9%		-9.9%
	Male	86	57.0%	206	20,882	45.6%	52,051	72,464	46.8%	180,473
	Change from last year	-10.4%		-6.4%	-11.8%		-13.5%	-5.6%		-6.4%
Ethnic Group	American Indian	1	0.7%	3	182	0.4%	429	596	0.4%	1,403
	Change from last year	0.0%		+50.0%	0.0%		-0.7%	-1.2%		-3.1%
	Asian	73	48.3%	184	17,414	38.0%	44,531	42,874	27.7%	112,652
	Change from last year	-40.7%		-37.2%	-11.0%		-12.7%	-4.9%		-6.5%
	Black	11	7.3%	23	1,356	3.0%	3,254	7,945	5.1%	18,727
	Change from last year	-26.7%		-28.1%	-27.9%		-27.7%	-12.2%		-12.4%
	Hispanic Overall	16	10.6%	34	11,910	26.0%	29,833	21,238	13.7%	52,557
	Change from last year	-36.0%		-44.3%	-18.0%		-21.0%	-12.0%		-14.3%
	<i>Mexican American</i>	11	7.3%	24	8,138	17.8%	20,453	10,439	6.7%	26,146
	Change from last year	-47.6%		-53.8%	-16.6%		-19.5%	-13.4%		-15.9%
	<i>Puerto Rican</i>	1	0.7%	2	104	0.2%	246	1,223	0.8%	2,823
	Change from last year	0.0%		-60.0%	-4.6%		-8.6%	+0.7%		-2.8%
	<i>Other Hispanic</i>	4	2.6%	8	3,668	8.0%	9,134	9,576	6.2%	23,588
	Change from last year	+33.3%		+100.0%	-21.4%		-24.5%	-11.9%		-13.8%
White	44	29.1%	113	12,373	27.0%	29,462	73,789	47.6%	178,626	
Change from last year	-6.4%		-0.9%	-13.1%		-13.9%	-7.6%		-8.0%	
Other	5	3.3%	12	1,929	4.2%	4,720	6,072	3.9%	15,256	
Change from last year	-54.5%		-42.9%	-18.7%		-19.2%	-5.9%		-5.8%	
No Response	1	0.7%	2	677	1.5%	1,576	2,344	1.5%	5,573	
Change from last year	-75.0%		-77.8%	+18.8%		+16.4%	+21.3%		+18.4%	

SAT Subject Tests: Percent Participation by Ethnic Group



Number of Students Taking SAT Subject Tests:

	'08-'09	'09-'10	'10-'11	'11-'12	'12-'13
American Indian	1	6	4	1	1
Asian	287	285	343	123	73
Black	41	43	28	15	11
Hispanic	76	70	86	25	16
White	112	89	93	47	44
Other	19	29	16	11	5
No Response	23	7	10	4	1
Total	559	529	580	226	151

SAT Subject Tests: Subject Tests Participation and Performance

	'11-'12			'12-'13		
	# of Tests Taken	% of Total	Mean	# of Tests Taken	% of Total	Mean
Total Tests Taken	532	100%		371	100%	
Chemistry	29	5%	507	18	5%	550
Chinese with Listening	7	1%	794	1	0%	
Ecological Biology	56	11%	602	43	12%	631
French	2	0%		1	0%	
French with Listening	0	0%		0	0%	
German	1	0%		0	0%	
German with Listening	0	0%		0	0%	
Italian	0	0%		0	0%	
Japanese with Listening	4	1%		0	0%	
Korean with Listening	4	1%		0	0%	
Latin	2	0%		4	1%	
Literature	102	19%	532	41	11%	578
Math Level I (M1)	30	6%	506	21	6%	540
Math Level II (M2)	118	22%	587	107	29%	604
Modern Hebrew	1	0%		0	0%	
Molecular Biology	41	8%	588	32	9%	641
Physics	22	4%	638	32	9%	605
Spanish	9	2%	691	6	2%	738
Spanish with Listening	2	0%		0	0%	
U.S. History	88	17%	562	54	15%	603
World History	14	3%	596	11	3%	592

District Integrated Summary 2012-2013

SACRAMENTO CITY UNIFIED SCHOOL DISTRICT



AP: Participation and Performance Overview

		SACRAMENTO CITY UNIFIED SCHOOL DISTRICT				California- Public Schools				Total Group - Public Schools			
		# of Test-Takers	% of Total	# of Exams Taken	# of Grades 3-5	# of Test-Takers	% of Total	# of Exams Taken	# of Grades 3-5	# of Test-Takers	% of Total	# of Exams Taken	# of Grades 3-5
All	Total	1,275	100.0%	2,086	1,088	298,977	100.0%	557,844	323,834	1,917,514	100.0%	3,379,482	1,923,520
	Change from last year	+8.2%		+3.7%	-1.8%	+5.6%		+7.1%	+5.5%	+5.7%		+6.6%	+6.1%
Gender	Female	676	53.0%	1,060	521	169,540	56.7%	306,919	167,708	1,076,416	56.1%	1,847,209	993,348
	Change from last year	+5.3%		-1.7%	-4.9%	+5.3%		+6.5%	+4.8%	+5.2%		+5.8%	+5.6%
Gender	Male	599	47.0%	1,026	567	129,437	43.3%	250,925	156,126	841,098	43.9%	1,532,273	930,172
	Change from last year	+11.8%		+9.9%	+1.3%	+6.1%		+7.9%	+6.3%	+6.4%		+7.6%	+6.7%
Ethnic Group	American Indian	11	0.9%	21	12	1,331	0.4%	2,313	1,243	10,983	0.6%	17,711	7,841
	Change from last year	+57.1%		+31.3%	+33.3%	+23.4%		+26.7%	+28.1%	+19.4%		+20.1%	+21.7%
Ethnic Group	Asian	510	40.0%	894	421	77,213	25.8%	164,244	109,568	239,297	12.5%	509,178	342,962
	Change from last year	+1.4%		-1.2%	-7.7%	+8.0%		+8.5%	+7.9%	+10.3%		+11.0%	+10.4%
Ethnic Group	Black	69	5.4%	101	32	9,903	3.3%	16,600	6,423	159,448	8.3%	247,901	69,483
	Change from last year	+25.5%		+18.8%	-8.6%	+9.1%		+12.3%	+15.2%	+8.4%		+9.1%	+11.1%
Ethnic Group	Hispanic Overall	276	21.6%	386	189	106,238	35.5%	182,176	76,740	347,294	18.1%	581,270	238,038
	Change from last year	+23.2%		+20.2%	+10.5%	+13.1%		+15.2%	+12.0%	+12.9%		+14.1%	+13.3%
Ethnic Group	<i>Mexican American</i>	211	16.5%	289	149	74,242	24.8%	128,130	54,273	170,049	8.9%	285,232	112,482
	Change from last year	+15.3%		+7.0%	+2.8%	+9.8%		+11.7%	+8.2%	+9.0%		+10.5%	+8.8%
Ethnic Group	<i>Puerto Rican</i>	2	0.2%	2	-	797	0.3%	1,399	772	20,118	1.0%	32,374	14,057
	Change from last year	+100.0%		+100.0%	-	+22.8%		+26.4%	+31.7%	+14.5%		+15.6%	+15.9%
Ethnic Group	<i>Other Hispanic</i>	63	4.9%	95	40	31,199	10.4%	52,647	21,695	157,127	8.2%	263,664	111,499
	Change from last year	+57.5%		+90.0%	+53.8%	+21.5%		+24.2%	+22.0%	+17.3%		+18.1%	+17.9%
Ethnic Group	White	319	25.0%	545	357	85,065	28.5%	158,935	110,443	1,065,074	55.5%	1,864,803	1,181,245
	Change from last year	+22.2%		+12.6%	+9.8%	+6.2%		+8.3%	+8.0%	+6.1%		+6.8%	+6.7%
Ethnic Group	Other	57	4.5%	94	49	12,841	4.3%	24,789	15,183	64,895	3.4%	117,639	66,419
	Change from last year	+50.0%		+51.6%	+22.5%	+12.7%		+13.6%	+13.8%	+17.8%		+19.0%	+20.1%
Ethnic Group	No Response	33	2.6%	45	28	6,386	2.1%	8,787	4,234	30,523	1.6%	40,980	17,532
	Change from last year	-63.3%		-67.6%	-61.1%	-60.0%		-66.5%	-71.4%	-58.7%		-64.8%	-71.2%

Note: Scores are reported when there are five or more exams taken by five or more test-takers.

District Integrated Summary 2012-2013

SACRAMENTO CITY UNIFIED SCHOOL DISTRICT



AP: Exam Participation and Performance (Part 1 of 3)

	'11-'12					'12-'13								
	# of Exams	% of Total	Score of 1	Score of 2	Score of 3	Score of 4	Score of 5	# of Exams	% of Total	Score of 1	Score of 2	Score of 3	Score of 4	Score of 5
Total # of Exams	2,012	100%	386	518	554	338	216	2,086	100%	417	581	586	323	179
Art History % of Total	0	–	0	0	0	0	0	0	–	0	0	0	0	0
Art: Studio 2D-Design % of Total	9	0%	5	4	0	0	0	7	0%	0	2	4	0	1
Art: Studio 3D-Design % of Total	0	–	0	0	0	0	0	2	0%	–	–	–	–	–
Art: Studio Drawing % of Total	0	–	0	0	0	0	0	3	0%	–	–	–	–	–
Biology* % of Total	194	10%	65	36	38	36	19	145	7%	9	60	62	12	2
Chemistry % of Total	15	1%	5	3	5	1	1	16	1%	6	4	4	2	0
Chinese Language and Culture % of Total	20	1%	0	0	4	2	14	12	1%	0	0	2	4	6
Computer Science A % of Total	0	–	0	0	0	0	0	0	–	0	0	0	0	0
Economics: Macroeconomics % of Total	2	0%	–	–	–	–	–	1	0%	–	–	–	–	–
Economics: Microeconomics % of Total	2	0%	–	–	–	–	–	1	0%	–	–	–	–	–
English Language & Composition % of Total	262	13%	33	93	85	37	14	306	15%	73	117	84	21	11
English Literature & Composition % of Total	226	11%	11	65	79	47	24	261	13%	27	73	92	52	17
Environmental Science % of Total	0	–	0	0	0	0	0	0	–	0	0	0	0	0
French Language % of Total	4	0%	–	–	–	–	–	30	1%	5	13	11	0	1

Note: Scores are reported when there are five or more exams.

* A revised exam in this subject with new exam standards was given in 2013. It is not possible to make valid comparisons of the 2013 score distribution with those from prior years.

AP: Exam Participation and Performance (Part 2 of 3)

	'11-'12							'12-'13						
	# of Exams	% of Total	Score of 1	Score of 2	Score of 3	Score of 4	Score of 5	# of Exams	% of Total	Score of 1	Score of 2	Score of 3	Score of 4	Score of 5
German Language % of Total	2	0%	–	–	–	–	–	1	0%	–	–	–	–	–
Government & Politics: Comparative % of Total	0	–	0	0	0	0	0	0	–	0	0	0	0	0
Government & Politics: United States % of Total	183	9%	46 25%	60 33%	54 30%	20 11%	3 2%	147	7%	22 15%	50 34%	51 35%	17 12%	7 5%
History: European % of Total	0	–	0	0	0	0	0	0	–	0	0	0	0	0
History: United States % of Total	180	9%	32 18%	61 34%	46 26%	30 17%	11 6%	167	8%	28 17%	47 28%	43 26%	39 23%	10 6%
History: World % of Total	233	12%	52 22%	96 41%	58 25%	22 9%	5 2%	241	12%	58 24%	94 39%	57 24%	20 8%	12 5%
Human Geography % of Total	0	–	0	0	0	0	0	0	–	0	0	0	0	0
Italian % of Total	0	–	0	0	0	0	0	0	–	0	0	0	0	0
Japanese Language and Culture % of Total	8	0%	3 38%	1 13%	3 38%	0 0%	1 13%	4	0%	–	–	–	–	–
Latin* % of Total	0	–	0	0	0	0	0	0	–	0	0	0	0	0
Mathematics: Calculus AB % of Total	246	12%	92 37%	29 12%	46 19%	35 14%	44 18%	236	11%	104 44%	35 15%	35 15%	33 14%	29 12%
Mathematics: Calculus BC % of Total	66	3%	2 3%	3 5%	19 29%	15 23%	27 41%	65	3%	9 14%	5 8%	22 34%	14 22%	15 23%
Music: Theory % of Total	0	–	0	0	0	0	0	9	0%	2 22%	6 67%	0 0%	1 11%	0 0%
Physics B % of Total	105	5%	14 13%	28 27%	40 38%	17 16%	6 6%	144	7%	27 19%	31 22%	53 37%	18 13%	15 10%
Physics C: Electricity & Magnetism % of Total	0	–	0	0	0	0	0	0	–	0	0	0	0	0

Note: Scores are reported when there are five or more exams.

* A revised exam in this subject with new exam standards was given in 2013. It is not possible to make valid comparisons of the 2013 score distribution with those from prior years.

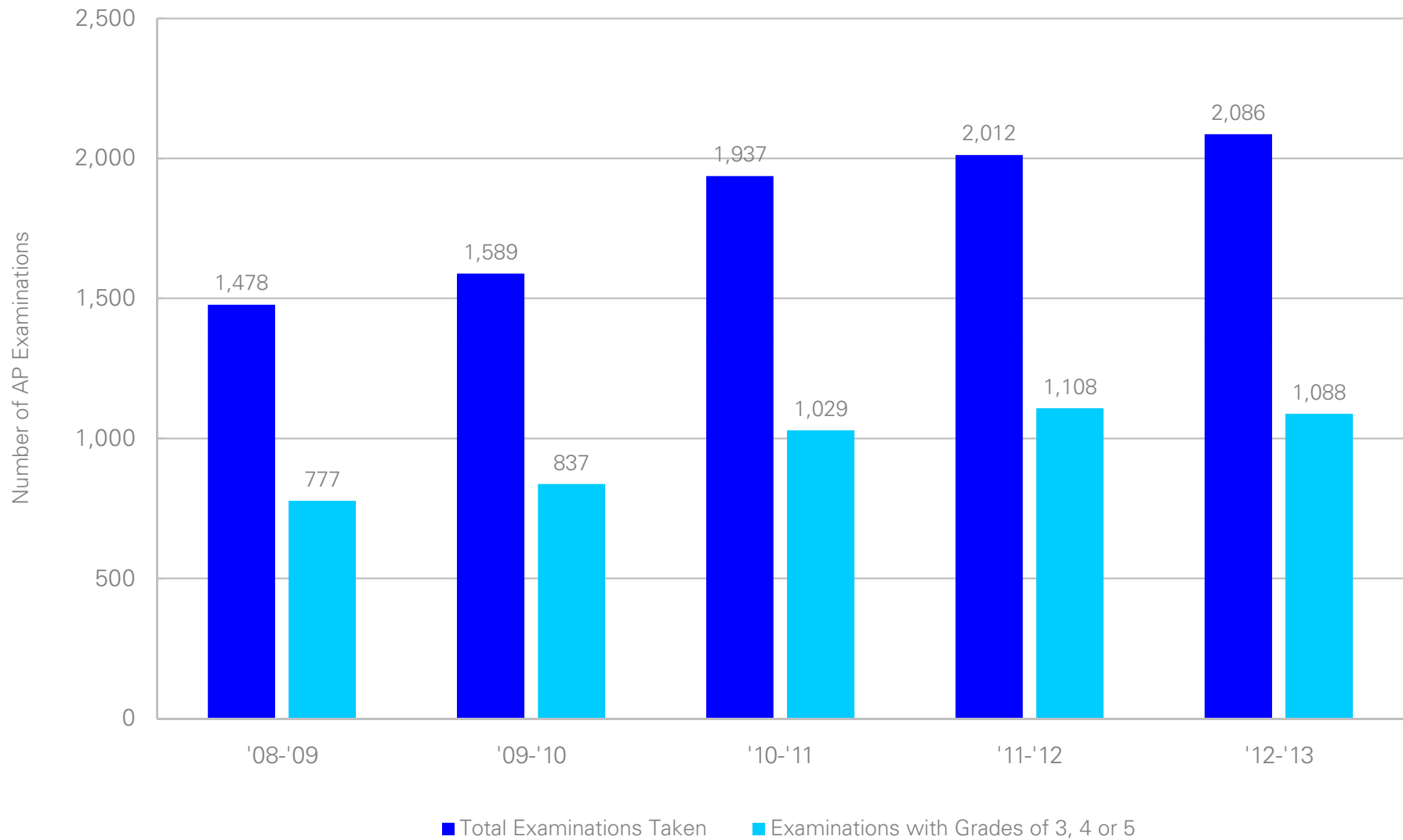
AP: Exam Participation and Performance (Part 3 of 3)

	'11-'12					'12-'13								
	# of Exams	% of Total	Score of 1	Score of 2	Score of 3	Score of 4	Score of 5	# of Exams	% of Total	Score of 1	Score of 2	Score of 3	Score of 4	Score of 5
Physics C: Mechanics % of Total	1	0%	–	–	–	–	–	0	–	0	0	0	0	0
Psychology % of Total	62	3%	5 8%	4 6%	14 23%	20 32%	19 31%	91	4%	5 5%	6 7%	14 15%	40 44%	26 29%
Spanish Language % of Total	124	6%	9 7%	16 13%	34 27%	42 34%	23 19%	116	6%	18 16%	17 15%	20 17%	36 31%	25 22%
Spanish Literature and Culture* % of Total	1	0%	–	–	–	–	–	0	–	0	0	0	0	0
Statistics % of Total	67	3%	10 15%	14 21%	28 42%	11 16%	4 6%	81	4%	19 23%	18 22%	28 35%	14 17%	2 2%

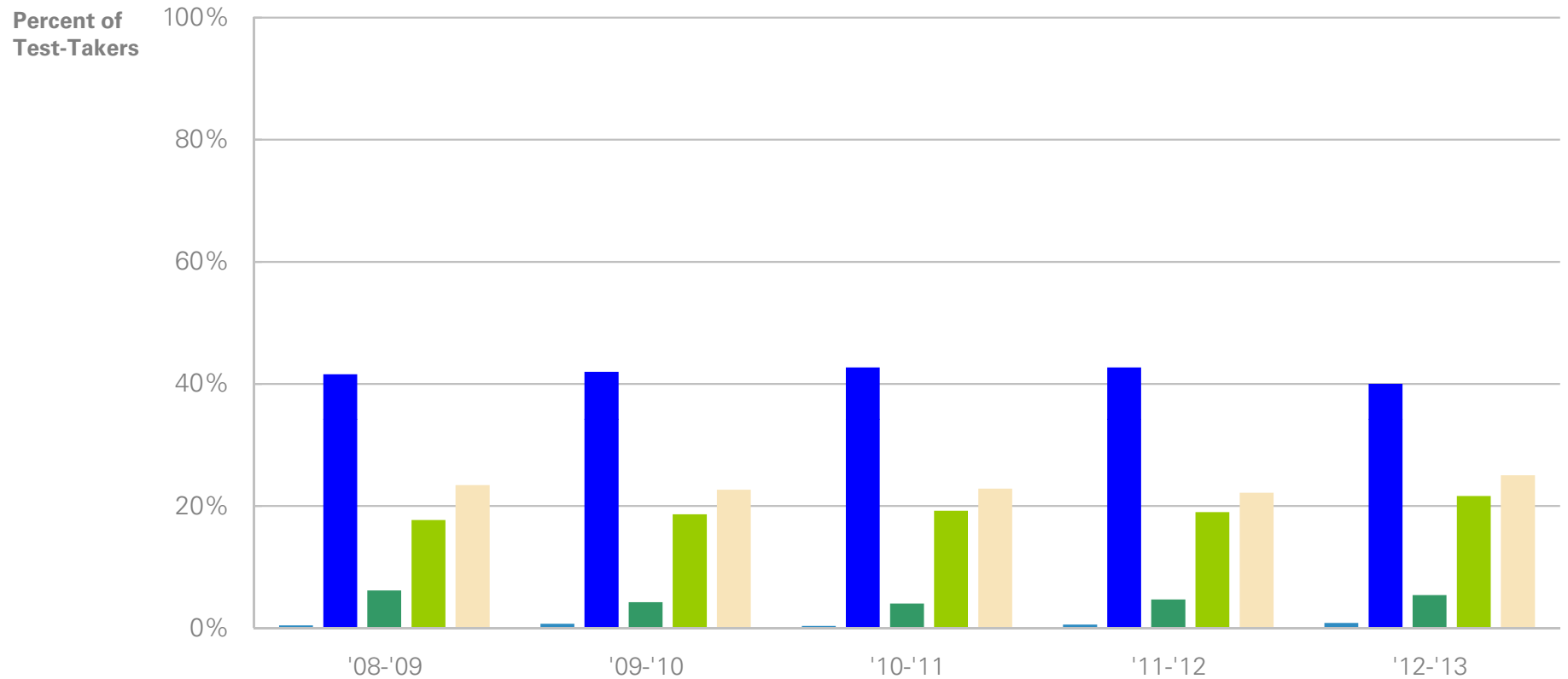
Note: Scores are reported when there are five or more exams.

* A revised exam in this subject with new exam standards was given in 2013. It is not possible to make valid comparisons of the 2013 score distribution with those from prior years.

AP: Number of Examinations and Number of Examinations with Grades of 3, 4 or 5



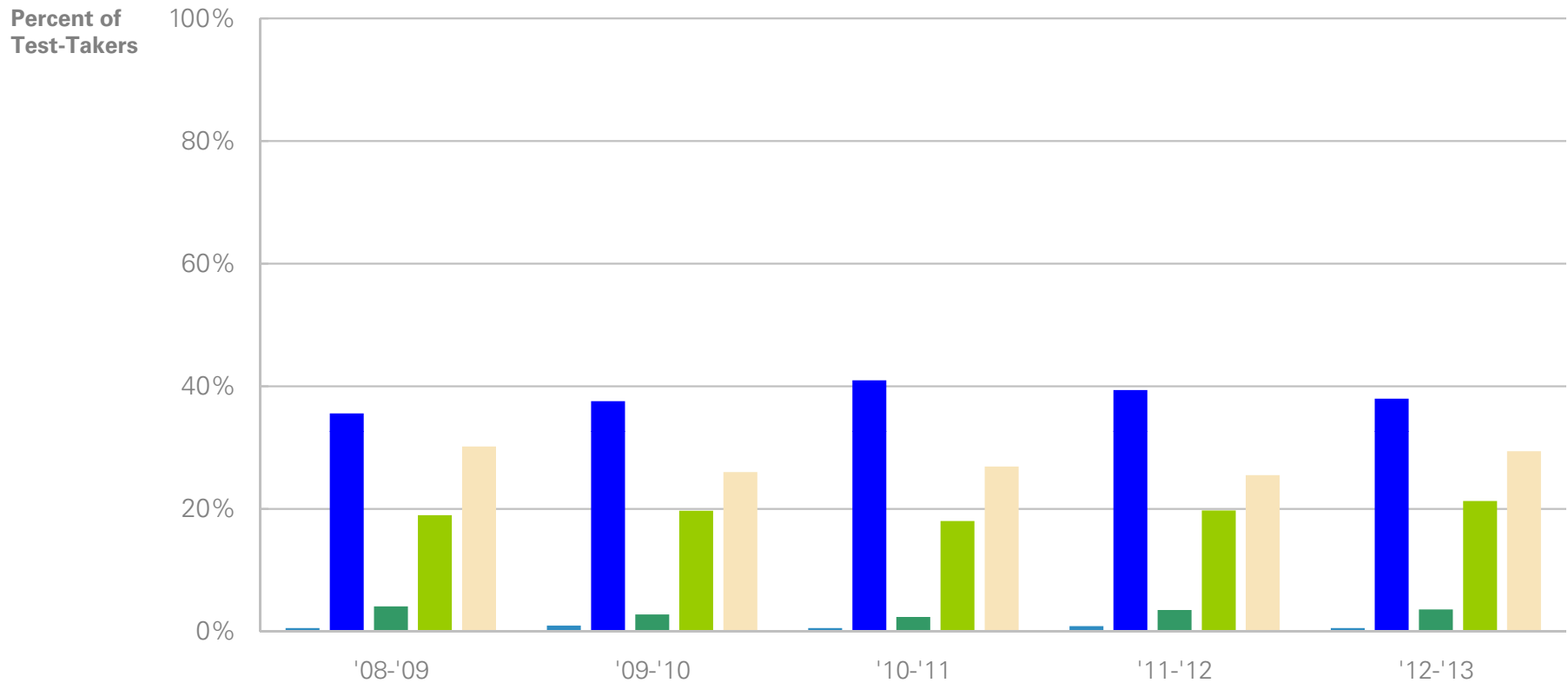
AP: Participation by Ethnic Groups Taking One or More Exam



Number of Students Taking One or More AP Exam:

American Indian	4	7	4	7	11
Asian	385	426	508	503	510
Black	57	43	48	55	69
Hispanic	164	189	229	224	276
White	217	230	272	261	319
Other	47	31	42	38	57
No Response	52	89	87	90	33
Total	926	1,015	1,190	1,178	1,275

AP: Participation by Ethnic Groups with Grades 3, 4 or 5



Number of Students With Grades 3, 4 or 5 on an AP Exam:

American Indian	3	6	4	6	4
Asian	191	227	277	267	262
Black	22	17	16	24	25
Hispanic	102	119	122	134	147
White	162	157	182	173	203
Other	30	21	31	28	31
No Response	27	57	44	46	18
Total	537	604	676	678	690

PSAT/NMSQT: Sophomore Participation and Performance Overview

		SACRAMENTO CITY UNIFIED SCHOOL DISTRICT					California- Public Schools					Total Group - Public Schools				
		# of Test-Takers	% of Total	Mean Critical Reading	Mean Mathematics	Mean Writing	# of Test-Takers	% of Total	Mean Critical Reading	Mean Mathematics	Mean Writing	# of Test-Takers	% of Total	Mean Critical Reading	Mean Mathematics	Mean Writing
All	Total	2,582	100.0%	38.5	39.2	37.6	153,308	100.0%	41.9	43.0	41.1	1,359,072	100.0%	42.4	42.9	41.0
	Change from last year		-0.5%	-0.2	-0.4	0.0		-0.7%	+0.5	+0.9	+1.1		+0.6%	+0.1	+0.5	+0.9
Gender	Female	1,287	49.8%	38.6	38.6	38.6	80,564	52.6%	42.1	42.4	42.0	700,027	51.5%	42.8	42.5	42.0
	Change from last year		-1.4%	-1.0	-0.7	-0.1		-0.5%	+0.1	+0.9	+1.0		+0.6%	-0.4	+0.5	+0.9
Gender	Male	1,282	49.7%	38.3	39.7	36.6	71,319	46.5%	41.7	43.7	40.1	649,813	47.8%	42.1	43.4	39.9
	Change from last year		+0.8%	+0.5	-0.3	+0.1		-0.8%	+1.0	+0.8	+1.0		+0.8%	+0.6	+0.4	+0.9
Ethnic Group	American Indian	17	0.7%	37.2	35.1	35.5	782	0.5%	41.7	41.5	40.0	10,725	0.8%	39.9	39.8	37.7
	Change from last year		-39.3%	-1.4	-3.1	-1.6		+9.7%	0.0	+0.5	+0.5		+5.4%	-0.1	+0.2	+0.4
Ethnic Group	Asian	628	24.3%	39.5	42.7	38.8	26,338	17.2%	47.1	51.1	45.7	100,866	7.4%	47.0	50.8	45.2
	Change from last year		+4.0%	+0.4	-0.4	+0.2		+6.1%	+0.1	+0.3	+0.3		+4.6%	+0.2	+0.1	+0.5
Ethnic Group	Black	331	12.8%	35.6	34.7	34.1	8,752	5.7%	38.4	37.5	37.3	208,302	15.3%	37.9	37.3	36.5
	Change from last year		+12.2%	-0.6	-0.9	-0.8		-2.5%	+0.7	+1.0	+0.9		+2.4%	+0.4	+0.8	+0.6
Ethnic Group	Hispanic Overall	726	28.1%	36.1	36.5	35.7	64,868	42.3%	37.8	38.2	37.5	300,110	22.1%	38.4	38.7	37.5
	Change from last year		+1.8%	-0.1	-0.8	+0.2		+2.0%	+0.8	+0.7	+1.2		+3.4%	+0.8	+0.4	+1.0
Ethnic Group	<i>Mexican American</i>	583	22.6%	35.9	36.6	35.5	43,336	28.3%	38.1	38.7	37.8	135,034	9.9%	38.3	38.9	37.7
	Change from last year		+3.4%	-0.3	-0.9	-0.1		+1.5%	+0.8	+0.8	+1.1		+1.0%	+0.8	+0.4	+1.1
Ethnic Group	<i>Puerto Rican</i>	9	0.3%	35.9	34.7	35.2	450	0.3%	41.4	40.9	40.8	23,706	1.7%	38.4	37.8	36.6
	Change from last year		-25.0%	-2.3	-8.2	-2.0		+3.4%	+0.6	+1.4	+2.1		-1.0%	+0.5	+0.6	+0.8
Ethnic Group	<i>Other Hispanic</i>	134	5.2%	37.3	36.2	36.6	21,082	13.8%	37.1	37.2	36.7	141,370	10.4%	38.5	38.7	37.5
	Change from last year		-2.2%	+1.3	+0.1	+1.7		+3.2%	+0.9	+0.7	+1.2		+6.6%	+0.8	+0.4	+1.0
Ethnic Group	White	399	15.5%	44.8	44.0	44.2	32,202	21.0%	47.7	48.5	46.7	608,774	44.8%	45.8	46.3	44.2
	Change from last year		-5.2%	-1.2	0.0	+0.8		+2.2%	-0.5	+0.5	+0.9		+1.7%	-0.5	+0.4	+1.0
Ethnic Group	Other	169	6.5%	37.3	38.6	36.2	6,169	4.0%	43.2	44.1	42.4	47,047	3.5%	41.6	41.6	40.0
	Change from last year		+5.0%	+0.5	+0.2	-0.5		-0.2%	+0.5	+1.0	+1.2		-2.5%	+0.1	+0.6	+0.8
Ethnic Group	No Response	312	12.1%	37.6	37.5	35.9	14,197	9.3%	39.4	39.8	38.2	83,248	6.1%	39.1	39.1	37.5
	Change from last year		-16.4%	+0.2	+0.1	-0.3		-23.7%	+0.9	+0.7	+1.0		-20.1%	+0.5	+0.4	+0.7

District Integrated Summary 2012-2013

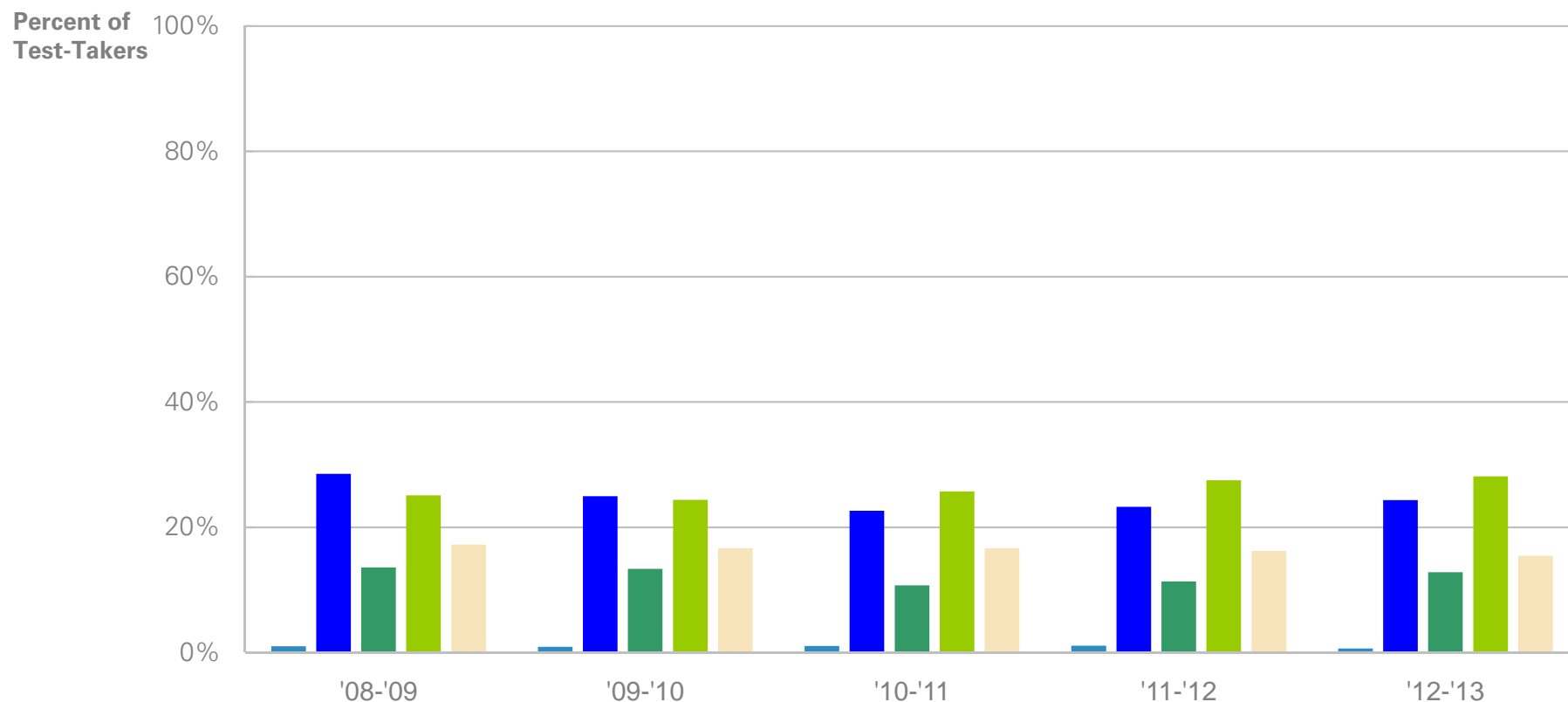
SACRAMENTO CITY UNIFIED SCHOOL DISTRICT



PSAT/NMSQT: Junior Participation and Performance Overview

		SACRAMENTO CITY UNIFIED SCHOOL DISTRICT					California- Public Schools					Total Group - Public Schools				
		# of Test-Takers	% of Total	Mean Critical Reading	Mean Mathematics	Mean Writing	# of Test-Takers	% of Total	Mean Critical Reading	Mean Mathematics	Mean Writing	# of Test-Takers	% of Total	Mean Critical Reading	Mean Mathematics	Mean Writing
All	Total	626	100.0%	47.7	49.7	47.6	155,900	100.0%	46.7	48.0	46.1	1,259,615	100.0%	47.0	48.0	45.7
	Change from last year	-7.0%		+0.1	+0.9	+1.6	+3.5%		+0.1	+0.2	+0.8	-0.9%		0.0	+0.2	+1.0
Gender	Female	372	59.4%	47.1	47.9	47.6	85,506	54.8%	46.6	46.8	46.5	676,840	53.7%	47.1	47.1	46.3
	Change from last year	-2.1%		-0.4	+1.2	+1.1	+3.4%		-0.1	+0.3	+0.8	-1.0%		-0.3	+0.3	+0.8
Gender	Male	248	39.6%	48.5	52.3	47.5	69,280	44.4%	47.0	49.7	45.7	577,871	45.9%	47.1	49.1	45.0
	Change from last year	-13.3%		+0.6	+0.5	+1.9	+3.7%		+0.5	+0.3	+0.8	-0.6%		+0.6	+0.2	+1.1
Ethnic Group	American Indian	6	1.0%	38.7	38.8	39.8	835	0.5%	46.8	47.1	45.3	8,606	0.7%	44.9	45.2	42.7
	Change from last year	0.0%		-8.0	-6.4	-7.2	+8.4%		+0.7	+1.4	+1.6	-2.6%		-0.3	+0.1	+0.5
Ethnic Group	Asian	194	31.0%	48.0	53.6	47.8	29,373	18.8%	51.9	56.0	51.0	106,620	8.5%	51.1	55.5	49.7
	Change from last year	-10.2%		+0.7	+2.3	+1.4	+5.5%		+0.3	-0.1	+0.2	+3.1%		+0.6	+0.1	+0.5
Ethnic Group	Black	59	9.4%	42.8	44.6	42.9	8,181	5.2%	42.2	41.6	41.3	152,536	12.1%	40.9	40.7	39.6
	Change from last year	0.0%		-2.1	+1.5	+0.7	+2.1%		+0.3	+1.0	+1.0	-2.7%		+0.3	+0.8	+0.6
Ethnic Group	Hispanic Overall	149	23.8%	44.1	45.4	43.6	59,887	38.4%	41.6	42.4	41.6	244,292	19.4%	41.7	42.7	41.1
	Change from last year	0.0%		-0.5	-0.4	-0.3	+7.4%		+0.4	+0.4	+1.0	+3.2%		+0.5	+0.2	+1.1
Ethnic Group	<i>Mexican American</i>	113	18.1%	44.2	45.3	43.2	41,002	26.3%	41.9	42.9	42.0	112,566	8.9%	41.9	43.2	41.5
	Change from last year	-11.0%		-0.4	-0.6	-1.0	+7.0%		+0.2	+0.3	+1.0	+1.8%		+0.5	+0.3	+1.1
Ethnic Group	<i>Puerto Rican</i>	5	0.8%	40.2	40.8	38.6	463	0.3%	46.1	45.6	44.7	18,407	1.5%	41.8	41.6	40.0
	Change from last year	+400.0%		-	-	-	+15.8%		-0.9	-0.7	-0.4	-4.3%		+0.2	+0.4	+0.6
Ethnic Group	<i>Other Hispanic</i>	31	5.0%	44.4	46.4	45.9	18,422	11.8%	40.6	41.2	40.6	113,319	9.0%	41.6	42.5	40.8
	Change from last year	+47.6%		+0.4	+2.7	+4.5	+8.1%		+0.7	+0.5	+1.2	+6.0%		+0.6	+0.3	+1.0
Ethnic Group	White	154	24.6%	52.8	51.7	53.3	40,939	26.3%	51.8	52.4	50.8	651,123	51.7%	50.2	51.0	48.6
	Change from last year	+9.2%		-0.5	-1.1	+3.0	+3.2%		-0.4	-0.1	+0.9	-0.9%		-0.3	0.0	+1.0
Ethnic Group	Other	21	3.4%	49.6	50.5	48.2	6,394	4.1%	48.5	49.6	47.8	42,174	3.3%	46.4	46.7	44.8
	Change from last year	-25.0%		+4.9	+7.8	+4.5	-0.4%		0.0	+0.5	+0.8	+1.4%		+0.4	+0.5	+1.1
Ethnic Group	No Response	43	6.9%	47.6	48.4	47.3	10,291	6.6%	44.2	44.8	43.2	54,264	4.3%	43.1	43.5	41.5
	Change from last year	-41.9%		+0.7	+1.3	+2.3	-15.5%		+0.7	+0.7	+1.1	-17.8%		+0.5	+0.5	+0.9

PSAT/NMSQT: Sophomore Participation by Ethnic Group

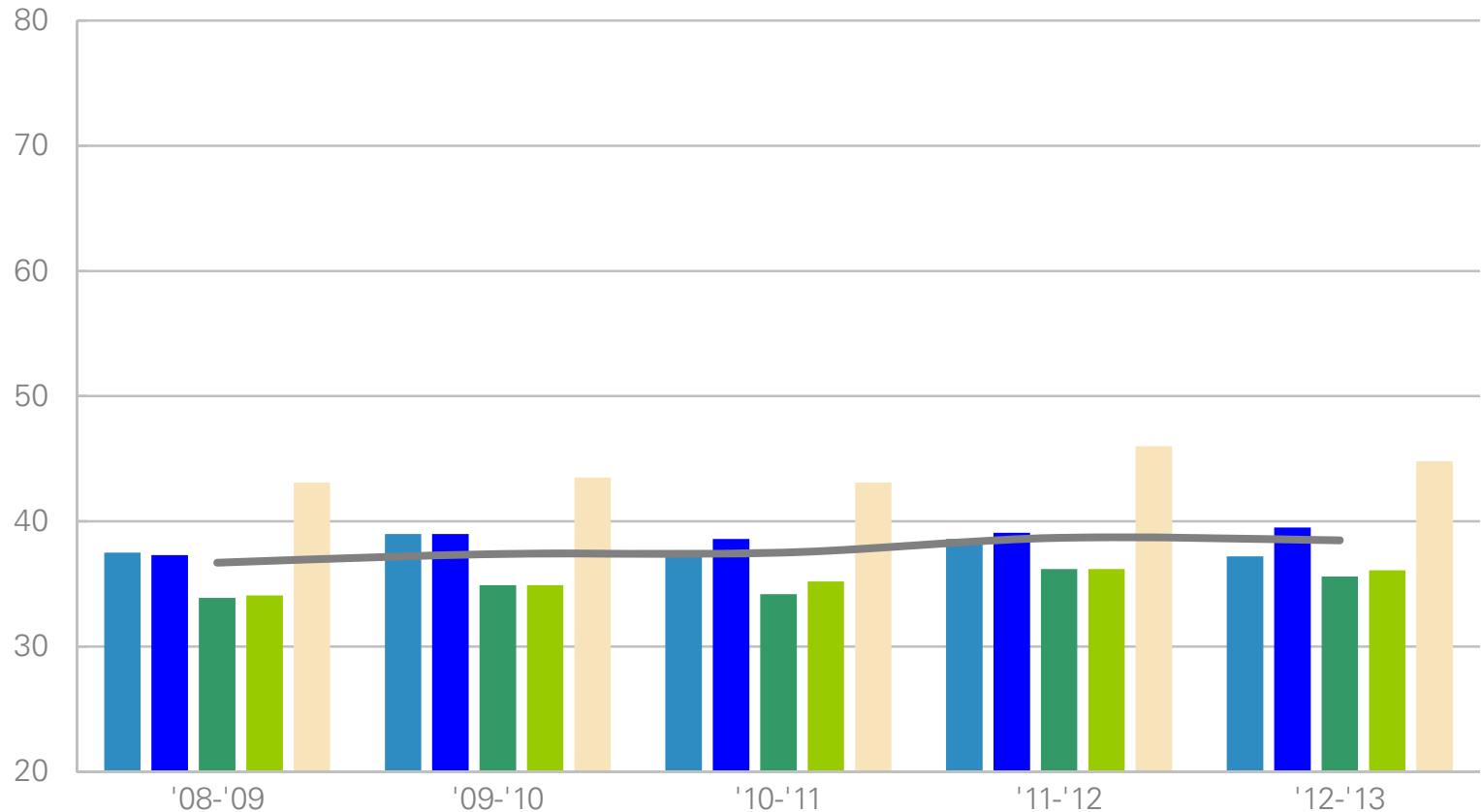


Number of Sophomores Taking the PSAT/NMSQT:

American Indian	28	25	28	28	17
Asian	802	691	611	604	628
Black	382	370	289	295	331
Hispanic	706	674	694	713	726
White	485	461	450	421	399
Other	238	187	191	161	169
No Response	171	359	437	373	312
Total	2,812	2,767	2,700	2,595	2,582

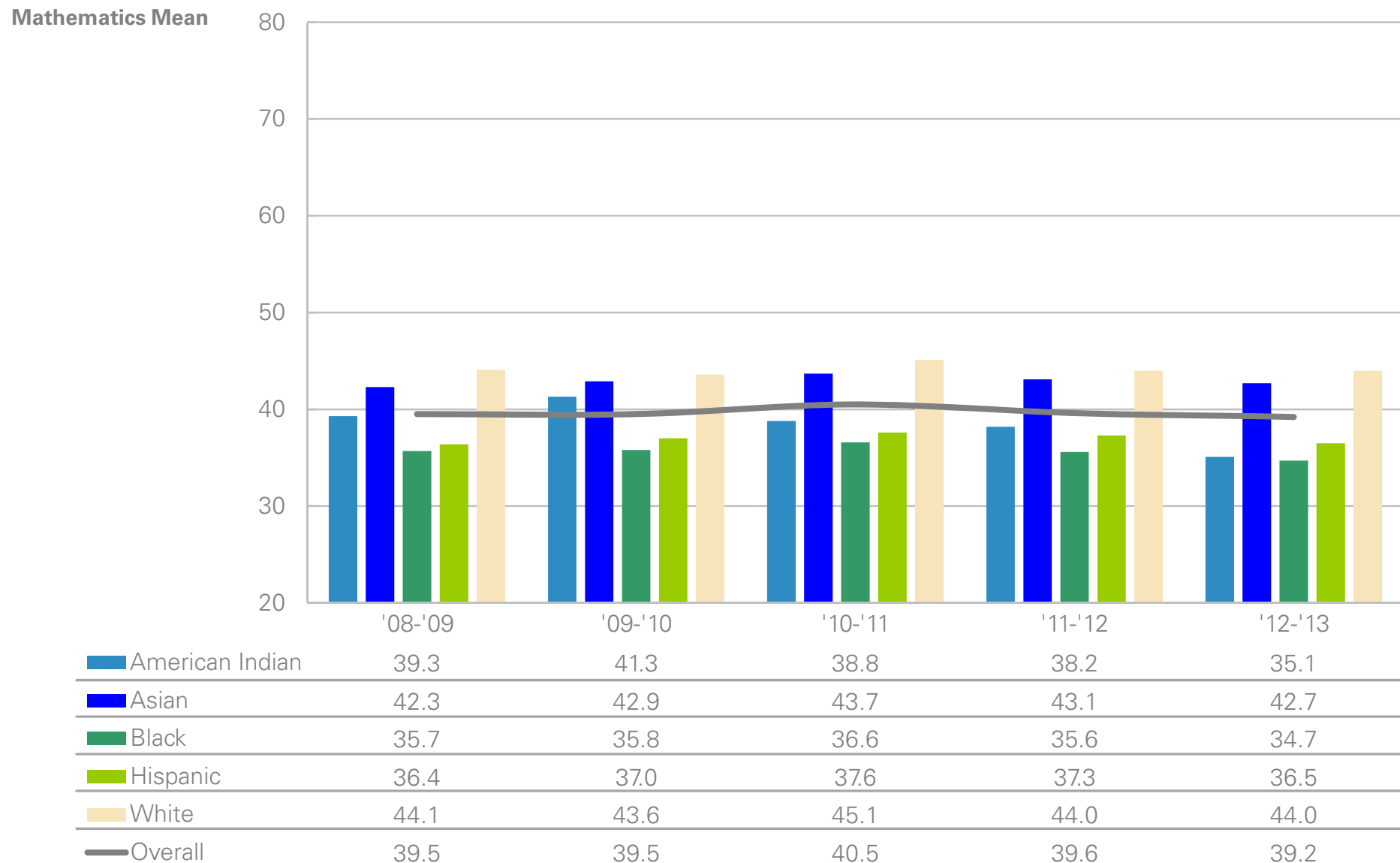
PSAT/NMSQT: Sophomore Critical Reading Performance by Ethnic Group

Critical Reading Mean

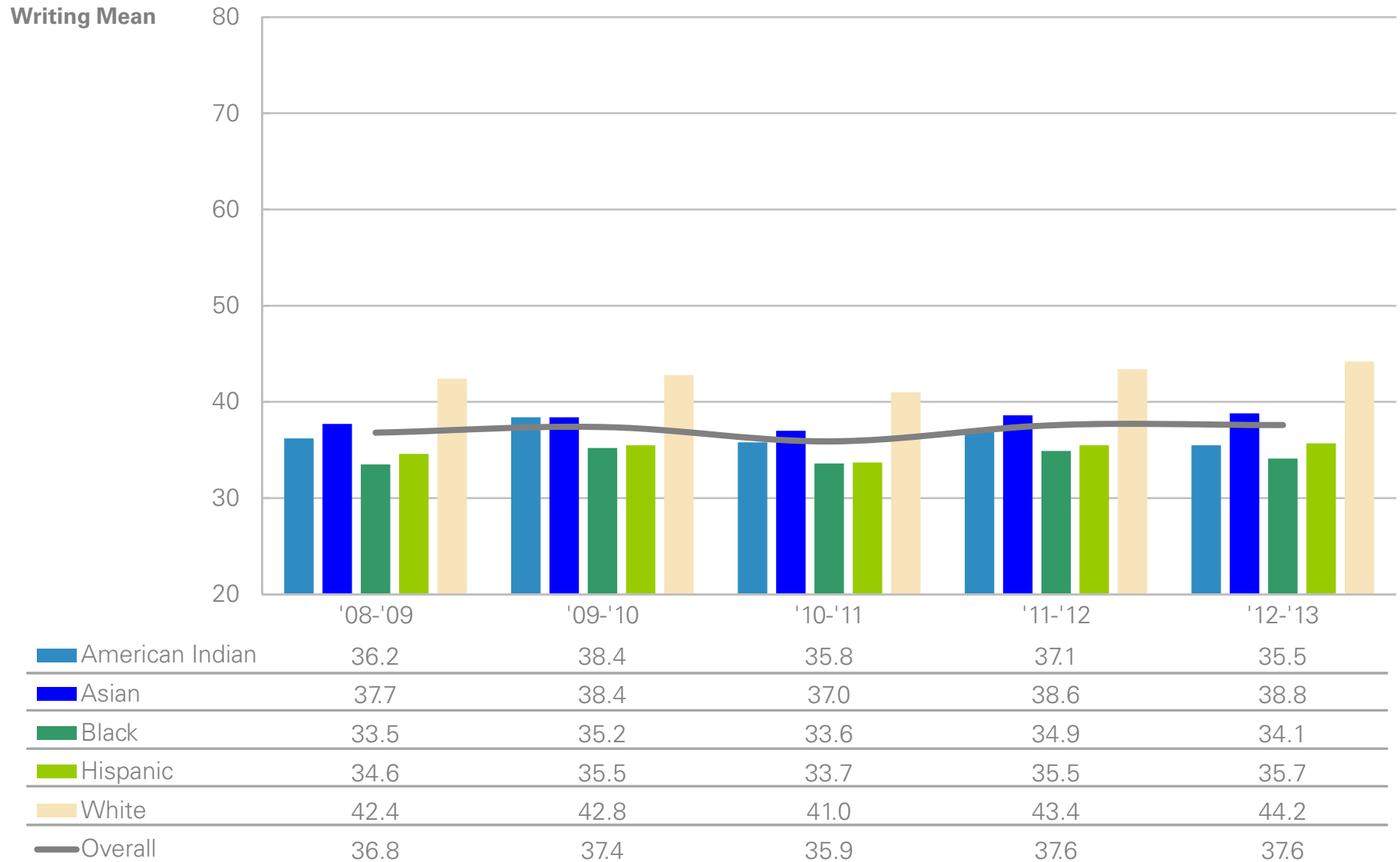


	'08-'09	'09-'10	'10-'11	'11-'12	'12-'13
American Indian	37.5	39.0	37.6	38.6	37.2
Asian	37.3	39.0	38.6	39.1	39.5
Black	33.9	34.9	34.2	36.2	35.6
Hispanic	34.1	34.9	35.2	36.2	36.1
White	43.1	43.5	43.1	46.0	44.8
Overall	36.7	37.4	37.5	38.7	38.5

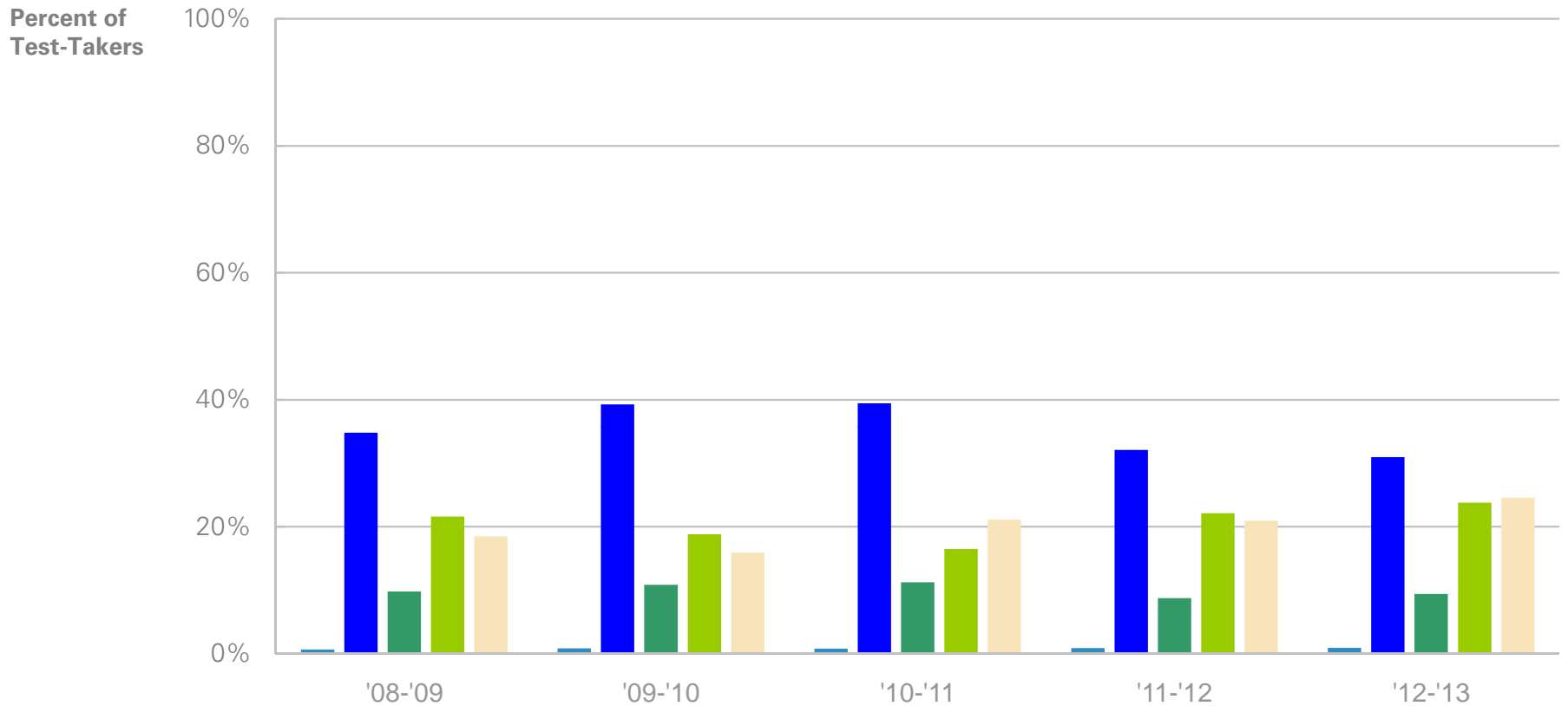
PSAT/NMSQT: Sophomore Mathematics Performance by Ethnic Group



PSAT/NMSQT: Sophomore Writing Performance by Ethnic Group



PSAT/NMSQT: Junior Participation by Ethnic Group

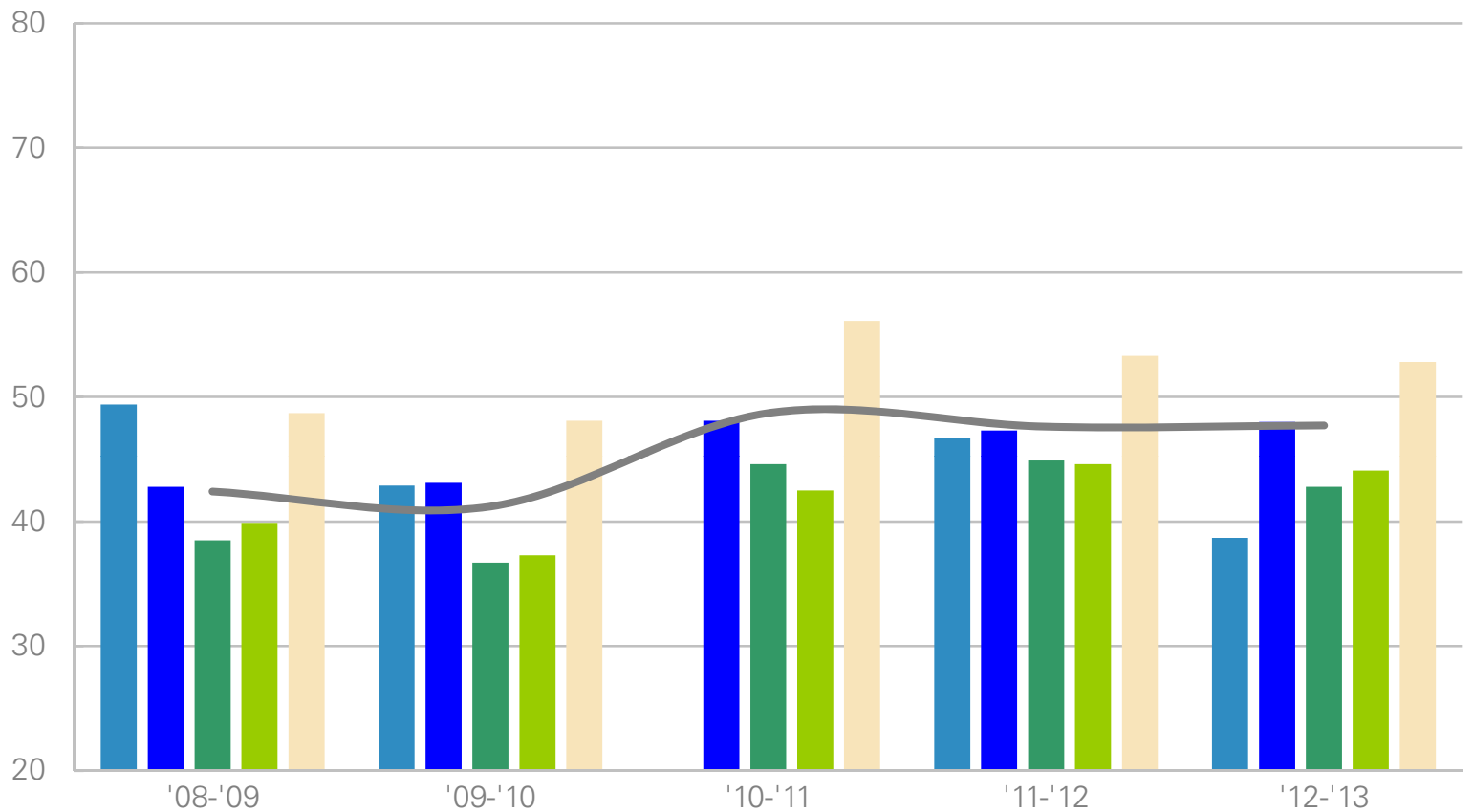


Number of Juniors Taking the PSAT/NMSQT:

American Indian	5	8	4	6	6
Asian	256	365	196	216	194
Black	72	101	56	59	59
Hispanic	159	175	82	149	149
White	136	148	105	141	154
Other	52	43	22	28	21
No Response	55	89	32	74	43
Total	735	929	497	673	626

PSAT/NMSQT: Junior Critical Reading Performance by Ethnic Group

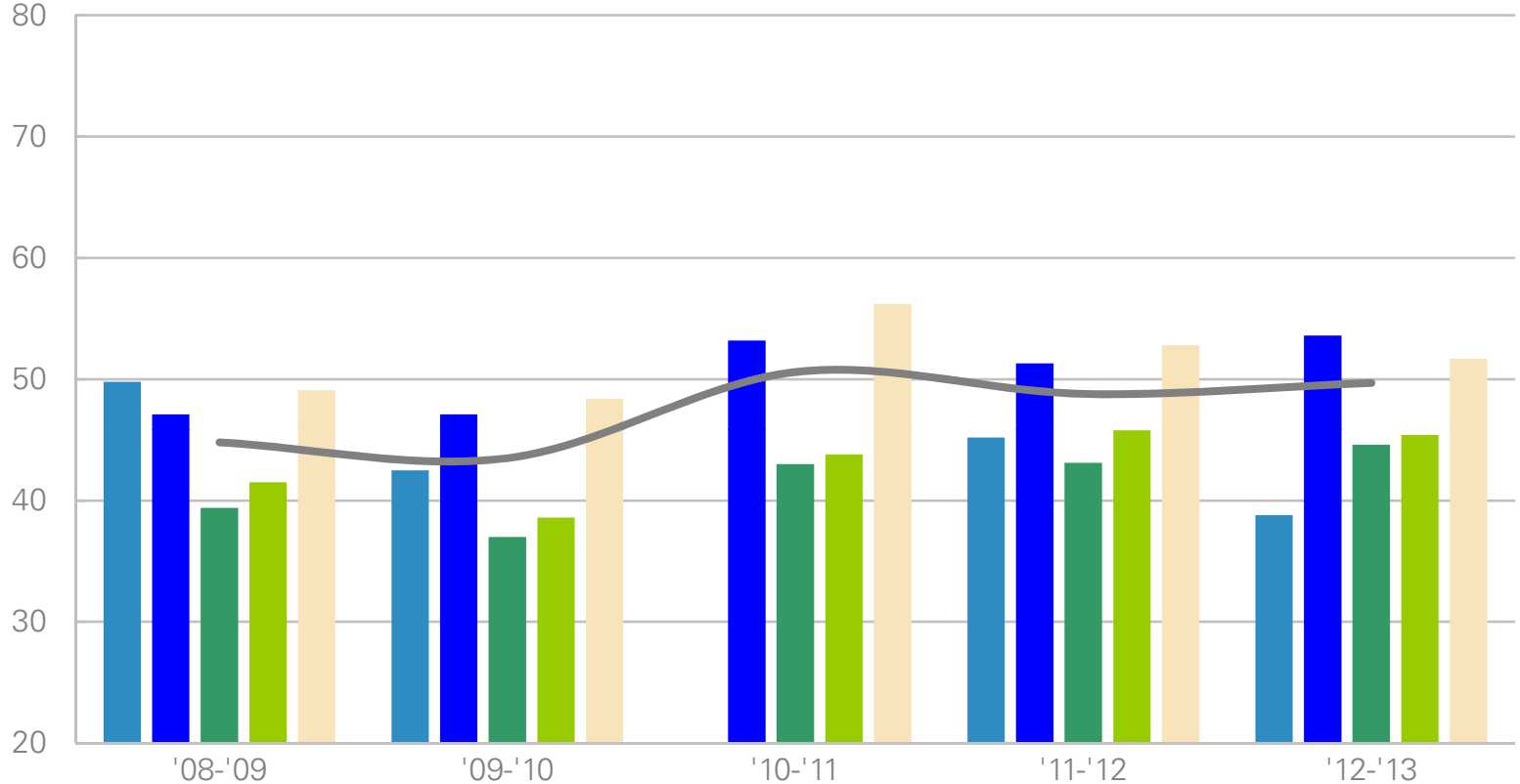
Critical Reading Mean



	'08-'09	'09-'10	'10-'11	'11-'12	'12-'13
American Indian	49.4	42.9		46.7	38.7
Asian	42.8	43.1	48.1	47.3	48.0
Black	38.5	36.7	44.6	44.9	42.8
Hispanic	39.9	37.3	42.5	44.6	44.1
White	48.7	48.1	56.1	53.3	52.8
Overall	42.4	41.2	48.7	47.6	47.7

PSAT/NMSQT: Junior Mathematics Performance by Ethnic Group

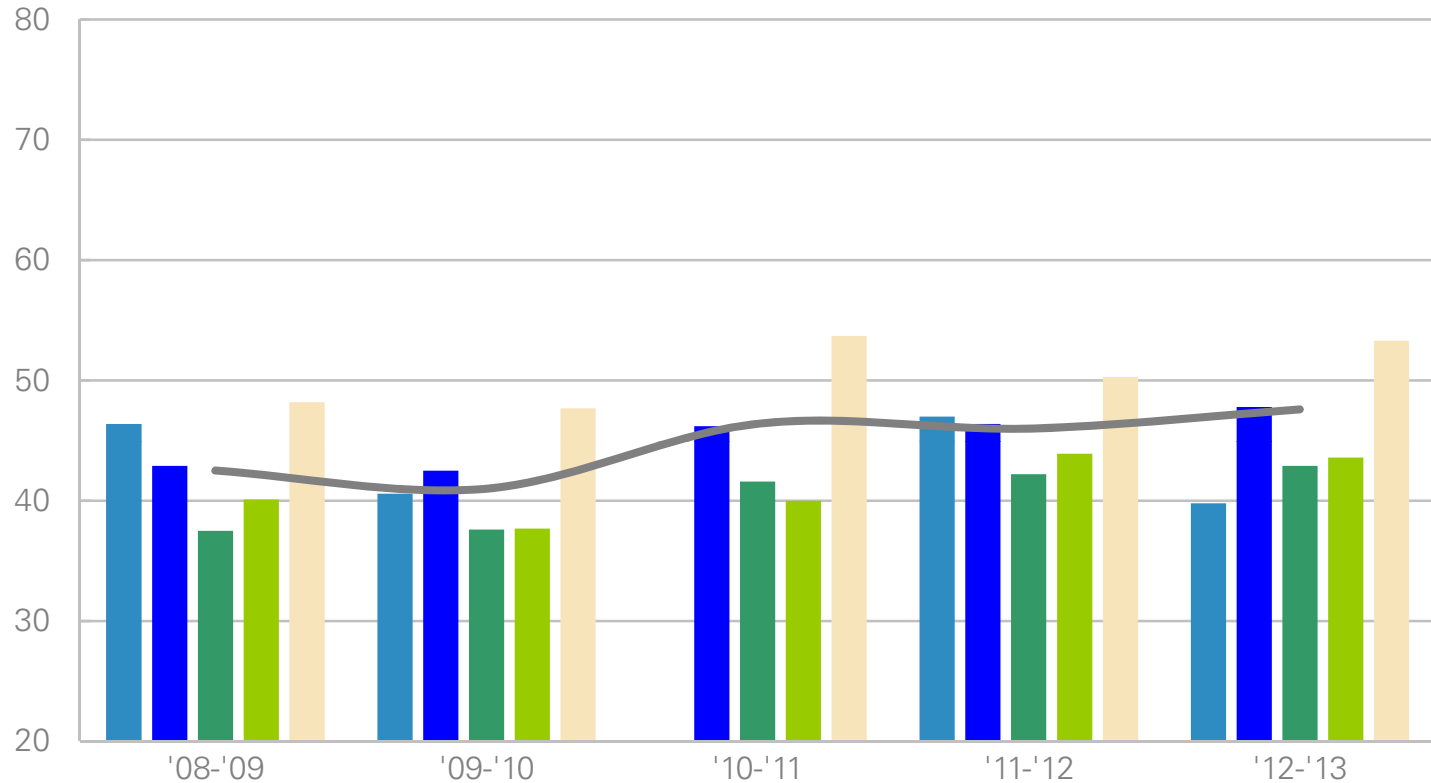
Mathematics Mean



	'08-'09	'09-'10	'10-'11	'11-'12	'12-'13
American Indian	49.8	42.5		45.2	38.8
Asian	47.1	47.1	53.2	51.3	53.6
Black	39.4	37.0	43.0	43.1	44.6
Hispanic	41.5	38.6	43.8	45.8	45.4
White	49.1	48.4	56.2	52.8	51.7
Overall	44.8	43.5	50.6	48.8	49.7

PSAT/NMSQT: Junior Writing Performance by Ethnic Group

Writing Mean



	'08-'09	'09-'10	'10-'11	'11-'12	'12-'13
American Indian	46.4	40.6		47.0	39.8
Asian	42.9	42.5	46.2	46.4	47.8
Black	37.5	37.6	41.6	42.2	42.9
Hispanic	40.1	37.7	40.0	43.9	43.6
White	48.2	47.7	53.7	50.3	53.3
Overall	42.5	41.0	46.4	46.0	47.6



SACRAMENTO CITY UNIFIED SCHOOL DISTRICT

Summary by High School: SAT[®], SAT Subject Tests[™], AP[®], PSAT/NMSOT[®]

2013		SAT 2013				SAT Subject Tests 2013		AP 2013			PSAT/NMSOT Sophomores 2012-13				PSAT/NMSOT Juniors 2012-13			
High School	AI Code	Test Takers	Critical Reading Mean	Mathematics Mean	Writing Mean	Test Takers	Total Tests Taken	Test Takers	Total Exams Taken	Number of Exams with Scores 3, 4 or 5	Test Takers	Critical Reading Mean	Mathematics Mean	Writing Skills Mean	Test Takers	Critical Reading Mean	Mathematics Mean	Writing Skills Mean
American Legion High School	052700	1	-	-	-	0	0	1	1	1	-	-	-	-	-	-	-	-
C K McClatchy High School	052705	229	543	555	529	58	138	284	570	393	566	41.1	41.0	39.6	57	58.4	59.9	58.9
George Washington Carver School of Arts Science	053015	14	507	478	493	-	-	15	18	4	77	41.8	40.7	41.6	10	54.8	47.0	52.9
Health Professions High School	053984	30	446	434	453	3	8	41	49	5	73	36.7	35.3	35.1	78	41.3	41.3	40.3
Hiram W Johnson High School	052717	106	398	406	377	-	-	107	147	29	296	34.8	34.6	33.4	3	-	-	-
John F Kennedy High School	052713	212	481	505	468	16	41	317	530	290	487	38.8	40.0	37.3	105	51.4	54.8	51.7
Luther Burbank High School	052719	200	386	424	387	17	40	21	21	21	399	34.4	35.4	34.3	58	39.7	43.4	39.0
Rosemont High School	053927	124	472	499	460	9	24	120	173	57	307	36.8	39.4	36.2	43	44.2	48.9	46.1
Sacramento New Technology High School	053012	37	451	458	441	2	6	0	0	0	72	39.6	38.4	39.3	10	41.3	39.6	41.1
School of Engineering and Sciences	054286	31	523	536	494	13	25	45	61	19	45	39.8	41.6	38.9	23	47.3	47.5	43.2
The Met Sacramento High School	053916	24	527	468	508	-	-	0	0	0	63	41.9	38.2	42.1	23	50.2	44.3	49.8
West Campus High School	052728	178	515	532	509	33	89	324	516	269	197	44.1	47.0	44.8	216	48.2	51.3	48.3

Data Notes

SAT Participation and Performance: Statistical information about SAT and SAT Subject test-takers is based on a year's graduating seniors and may include exams taken at any time during each student's high school career. Students are counted only once, no matter how often they tested, and only their latest scores and most recent SAT Questionnaire responses are summarized.

AP Participation and Performance: AP tests are administered in May each year. Statistical Information about AP test-takers is based on all students taking AP for each year reported.

PSAT Participation and Performance: PSAT tests are administered in October each year. Statistical Information about PSAT test-takers is summarized by education level for all Sophomores and Juniors taking the PSAT for each year reported. Only those students having a critical reading, mathematics and writing score are included.

ReadiStep Participation and Performance: Readistep tests have been administered during the fall and spring of each academic year. For District-level reports, statistical information about Readistep test-takers is summarized by education level for all 7th and 8th grade students taking the Readistep for each year reported. Only those students having a critical reading, mathematics and writing score are included.

Ethnic Background: Test-takers complete an optional questionnaire that asks them to indicate their ethnic group membership. The groupings provided for this question are American Indian or Alaskan Native; Asian, Asian American, or Pacific Islander; African American or black; Mexican or Mexican American; Puerto Rican; Latin American, South American, Central American, or other Hispanic or Latino; white; and Other. A small percentage of students indicated Other or did not provide a response.

Hispanic: Includes all students who indicated Mexican or Mexican American; Puerto Rican; Other Hispanic, Latino, or Latin American.

Minority: Students who provided a response and indicated any ethnic group other than white are included in this group.

Change from Last Year: The change from last year for frequency data (number of test-takers or exams) is represented as a percent change. It is obtained by subtracting the previous year's total from the current year and then dividing this difference by the previous year's total, which is then multiplied by 100. Change in mean score from last year is represented by the actual change in scale score. It is calculated by subtracting the previous year's mean score from that of the current year.

SAT Performance Based on PSAT/NMSQT Participation: Based on self-reported answers to the SAT Questionnaire.

Academic Preparation: Core includes SAT test-takers who have taken four or more years of English, three or more years of mathematics, three or more years of natural sciences and three or more years of social sciences and history based on self-reported answers to the SAT Questionnaire. Non-core includes students who provided responses for all four subject areas and did not meet the Core criteria.

SAT school participation and mean scores: Many factors can contribute to fluctuations in SAT school participation levels and mean scores, including efforts to foster a college-going culture, the academic preparedness of test-takers and changes in student self-reported information during SAT registration. Increases or decreases in the percentage of students providing their high school's unique code can influence year-over-year differences in school participation and mean scores. A decline in the number of students providing their high school's unique code among the classes of 2009 and 2010 resulted in a decline in reported public school participation in many states for those years. The College Board carefully monitors changes in student data and has enhanced the registration process to require students to report their school affiliation. As a result, the percentage of students reported by school type in the classes of 2011 through 2013 has increased. As with any data, fluctuations from year to year should be interpreted with appropriate consideration.