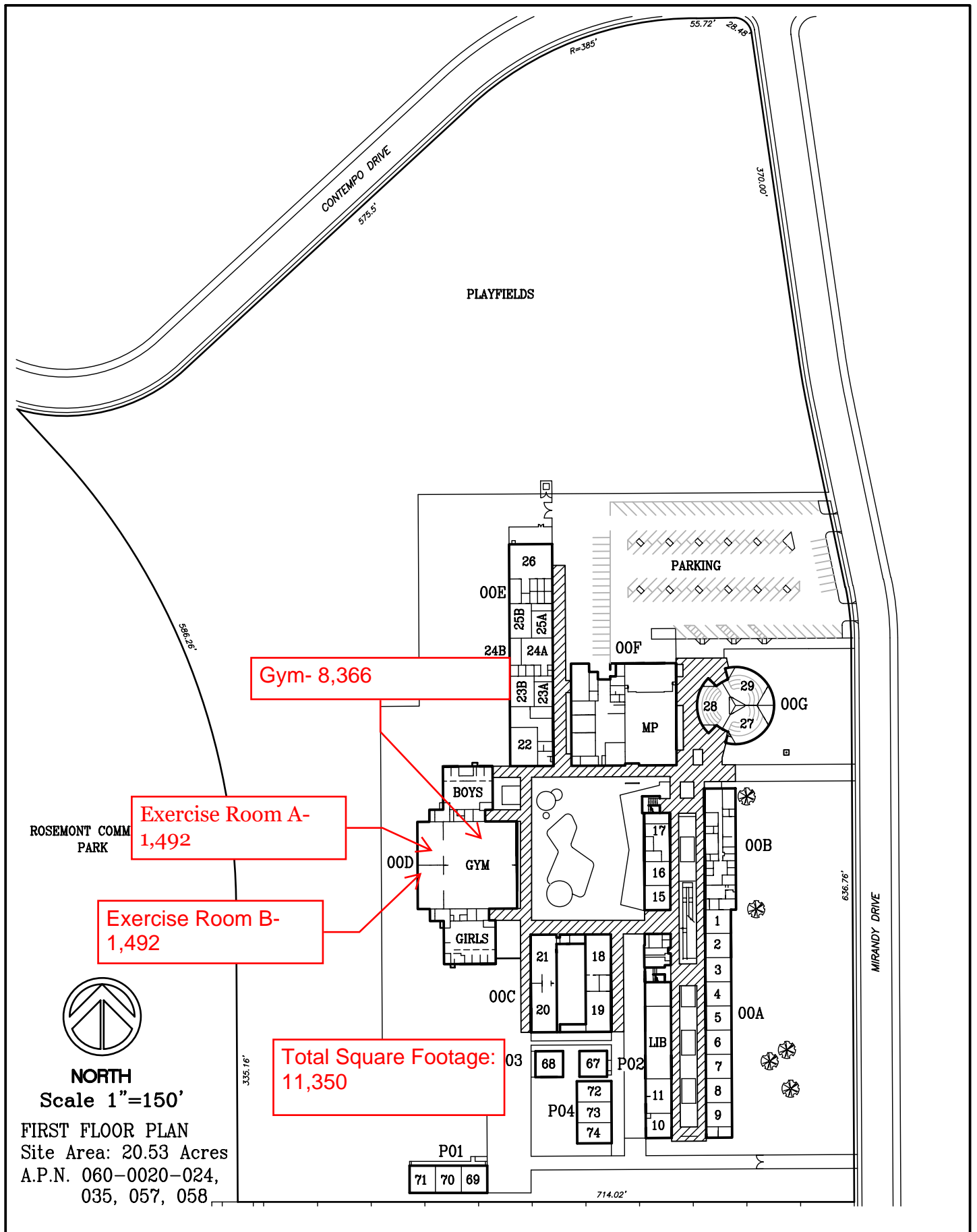


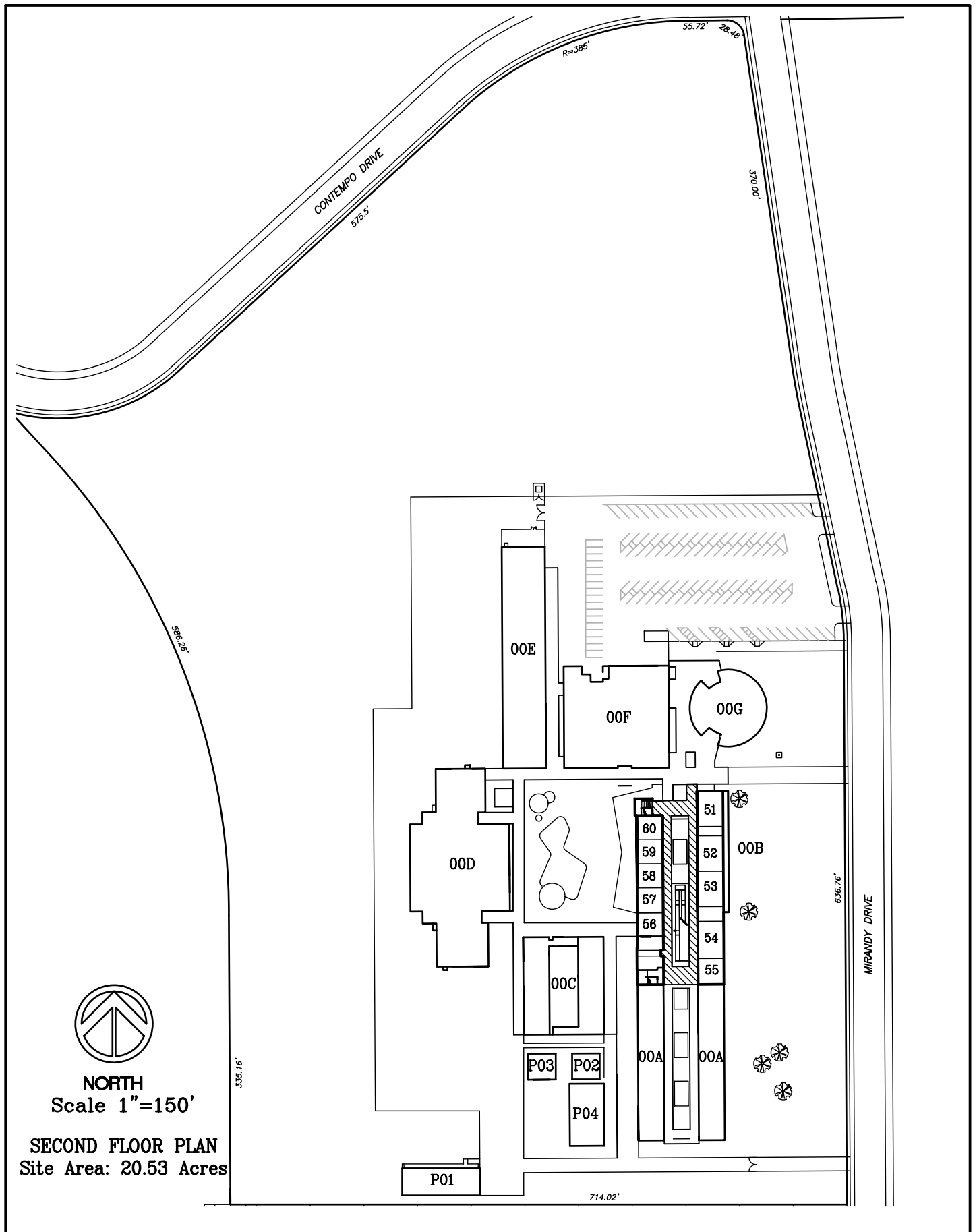
## Recoating Gym and Dance Flooring at Various Sites Scope of Work

The Project consists of Contractor to furnish all labor, materials, equipment, tools and incidentals for screening and re-coating 107,201 square feet of gym and dance flooring at six (6) high school sites throughout the District with one coat of Hillyard Trophy H-2/0 coating. Please see attached site maps with room location and square footage at each site. The work schedule is starting June 23, 2025 and must be complete and accepted by the District before July 28, 2025. Once Contractor is awarded project, a more detailed schedule will be agreed to allow for advance notification to sites about summer availability.

### Site Names:

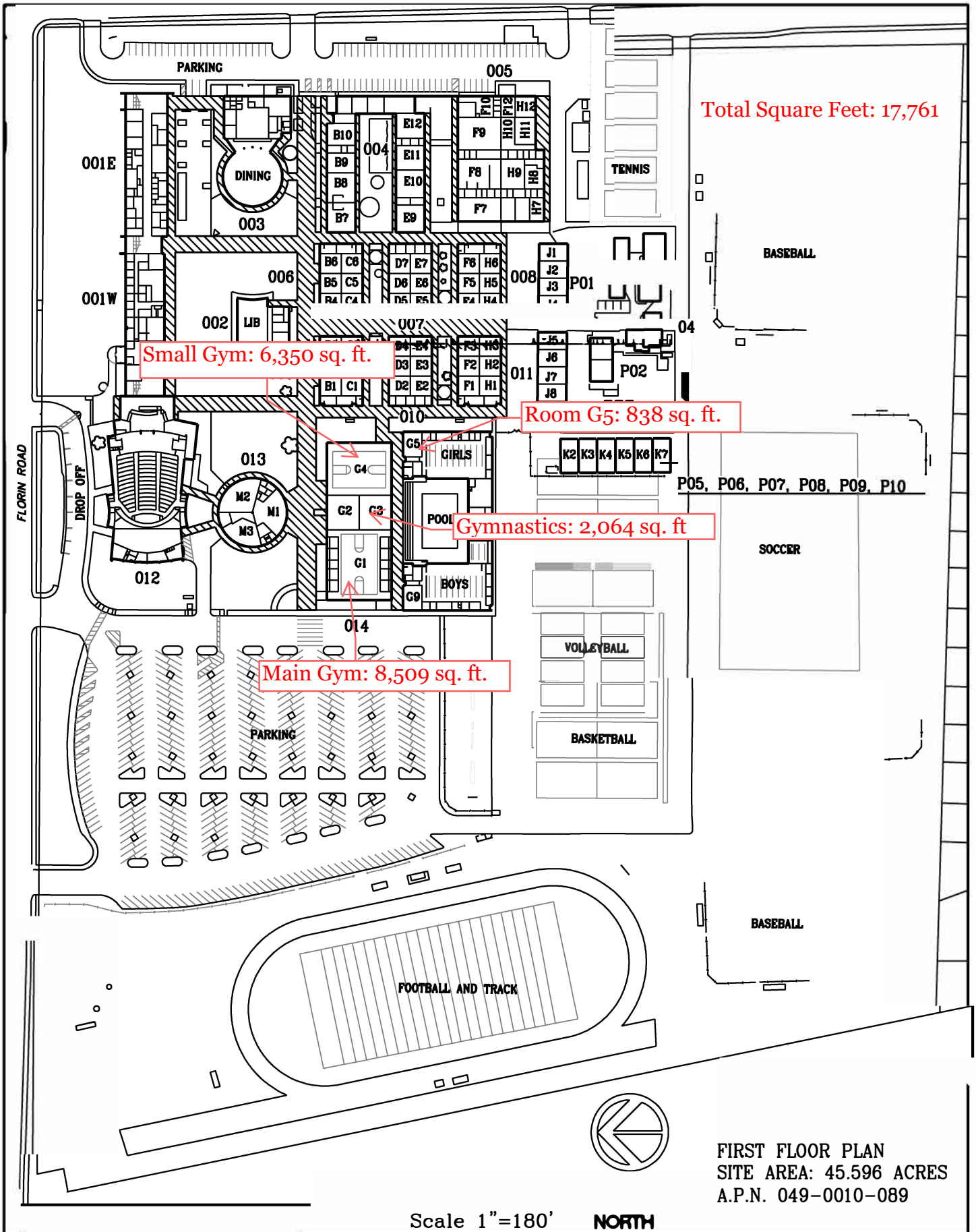
Albert Einstein MS - 11,350 sq.ft.  
CK McClatchy- 16,031 sq.ft  
California MS Gym - 7,215 sq.ft.  
David Lubin ES MP - 2,390 sq. ft.  
Ethel I. Baker ES MP - 2,431 sq.ft.  
Fern Bacon MS - 11,350 sq.ft.  
Hiram Johnson HS - 18,895 sq.ft.  
John F. Kennedy- 18,384 sq.ft.  
John Still MS - 11,350 sq.ft.  
Leonardo da Vinci K-8 - 7,992 sq.ft.  
Luther Burbank- 17,761 sq.ft.  
Rosa Parks K-8 - 11,350 sq.ft.  
Rosemont- 23,484 sq.ft.  
Sam Brannan MS - 10,107 sq.ft.  
West Campus – 10,468 sq.ft.  
Will C. Wood MS - 11,350 sq.ft.  
William Land ES MP - 2,390 sq.ft.





Albert Einstein Middle School (410) 2 of 2  
 9325 Mirandy Drive  
 SACRAMENTO CITY UNIFIED SCHOOL DISTRICT

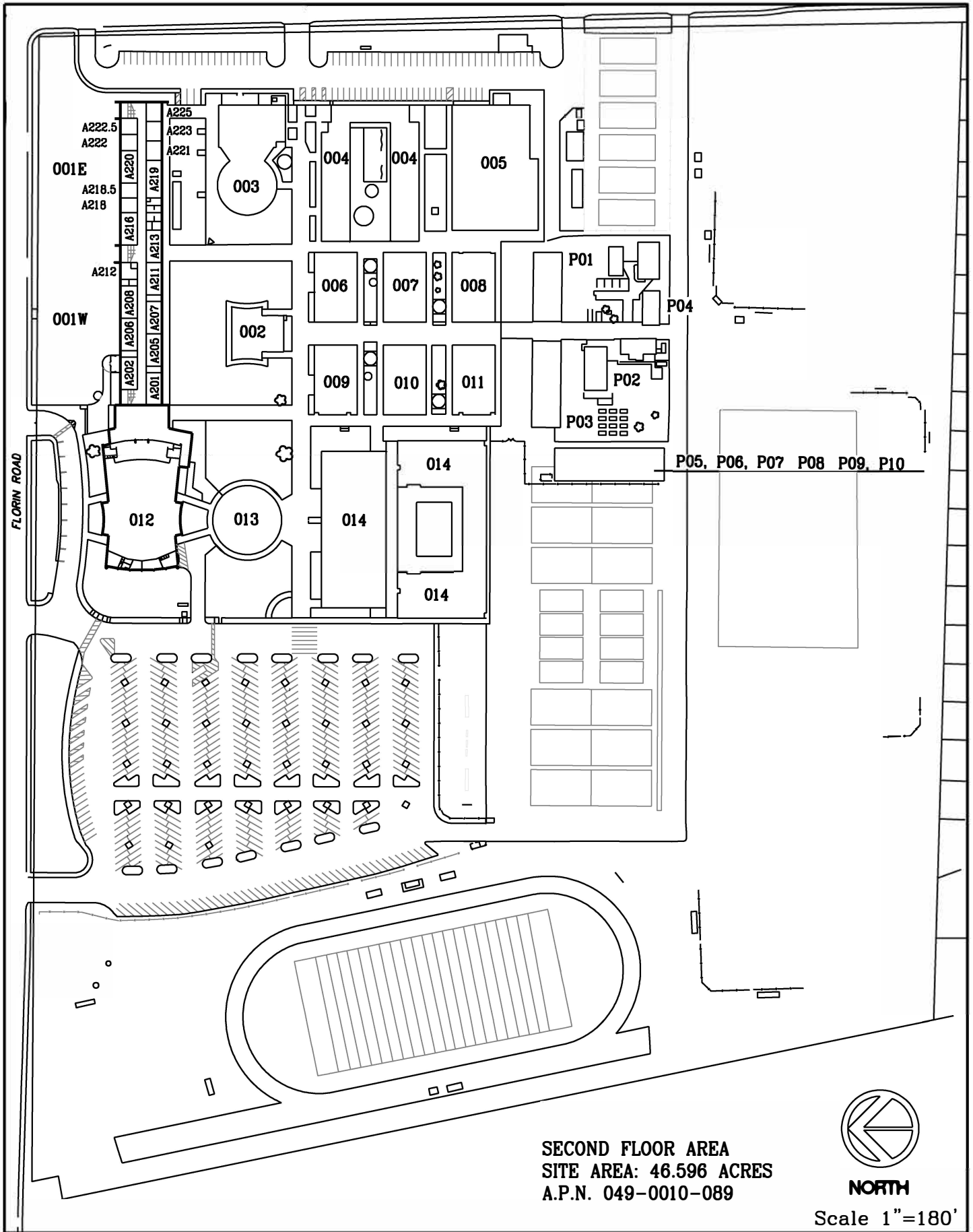
**EXISTING SITE DIAGRAM**  
 DECEMBER 2003



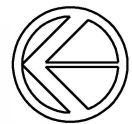
Luther Burbank High School (530)  
 3500 Florin Road  
 SACRAMENTO CITY UNIFIED SCHOOL DISTRICT

# EXISTING SITE DIAGRAM

DECEMBER 2003 (UPDATED APRIL 2021)



**SECOND FLOOR AREA**  
**SITE AREA: 46.596 ACRES**  
**A.P.N. 049-0010-089**



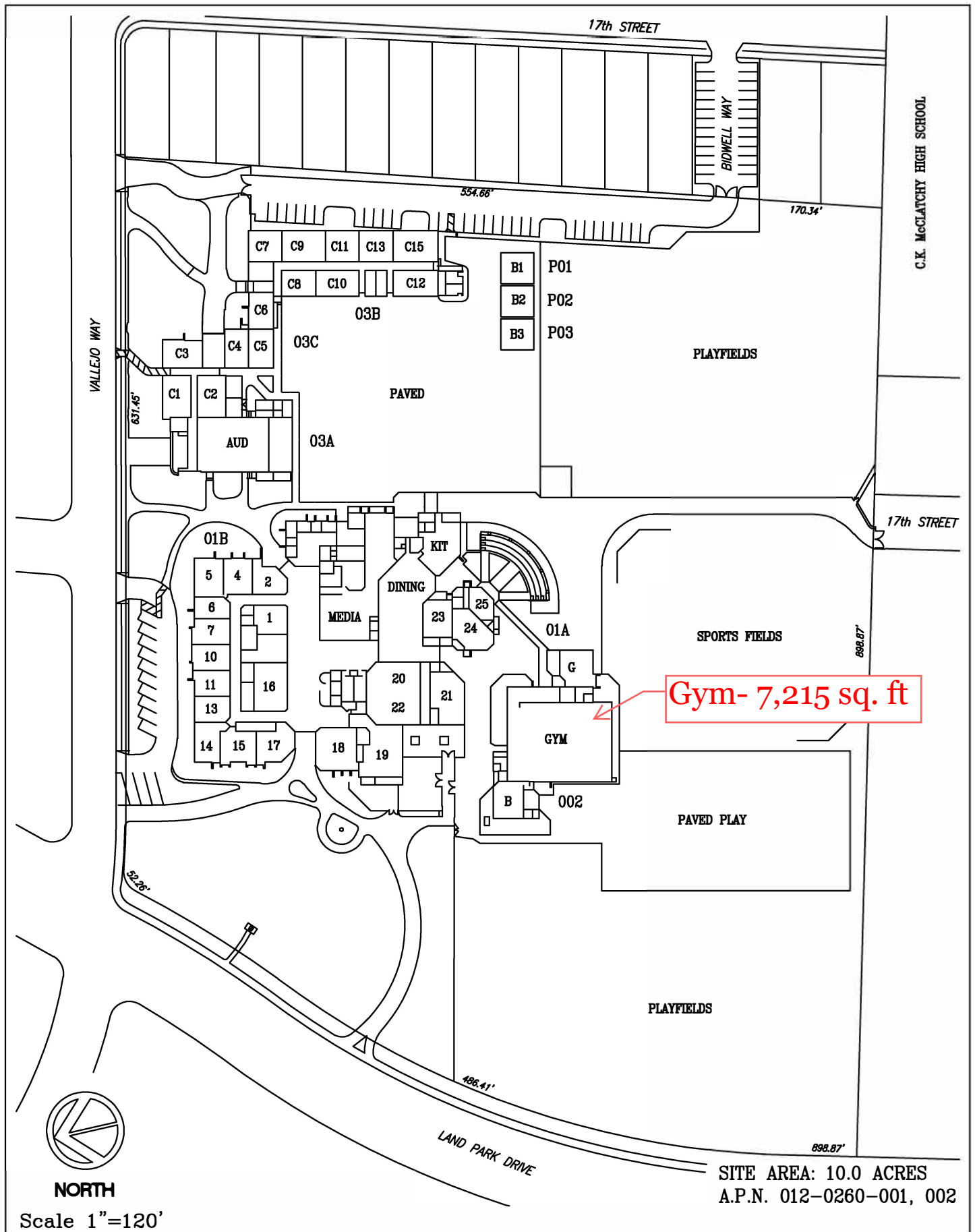
**NORTH**

Scale 1"=180'

Luther Burbank High School (530)  
 3500 Florin Road  
 SACRAMENTO CITY UNIFIED SCHOOL DISTRICT

# EXISTING SITE DIAGRAM

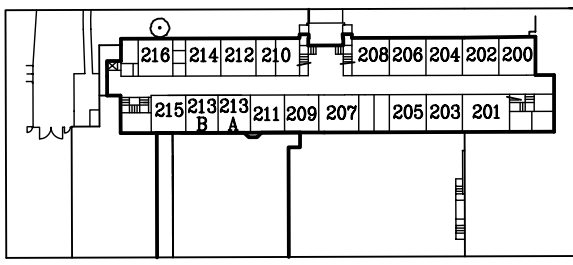
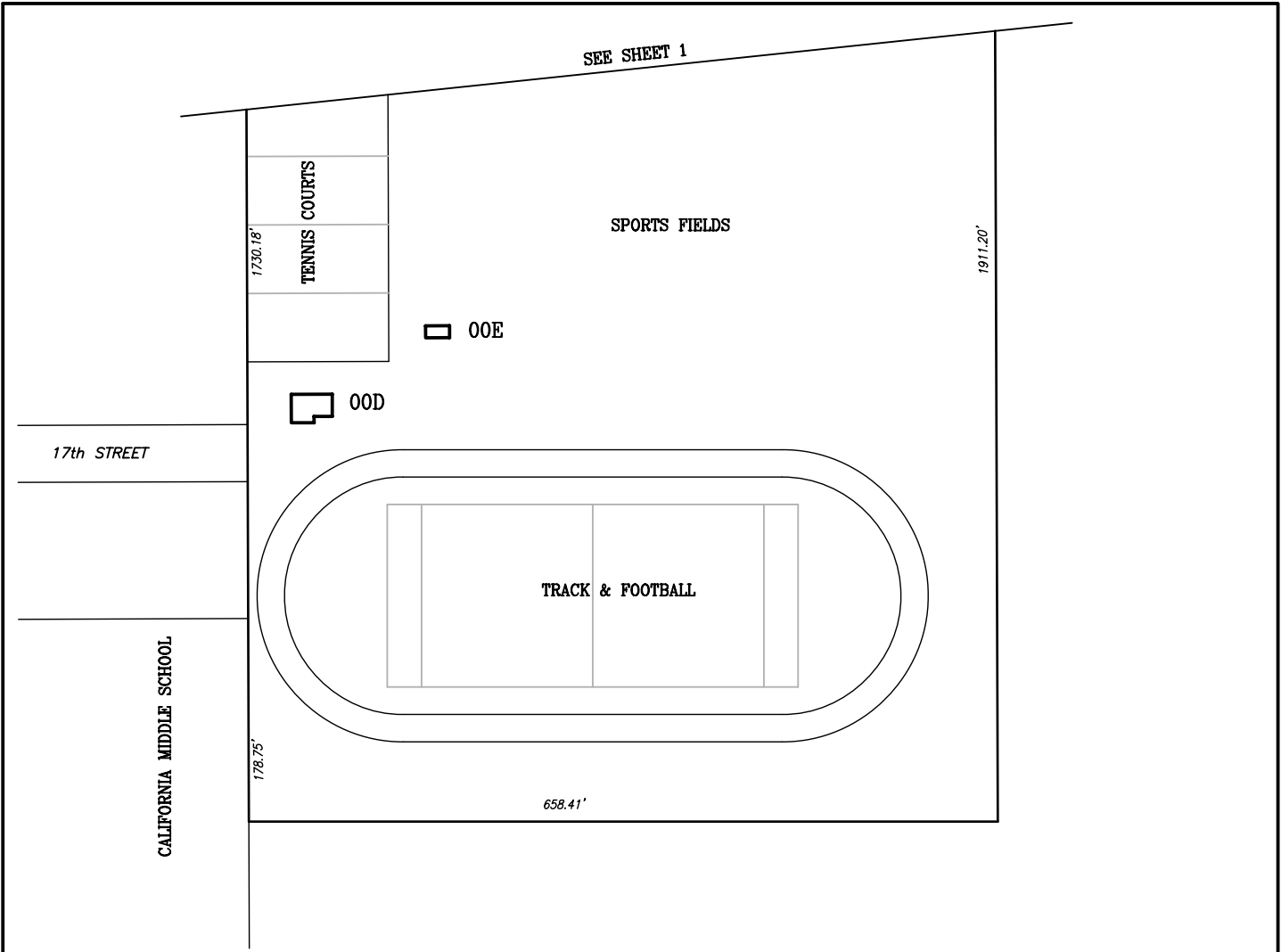
DECEMBER 2003 (UPDATED APRIL 2021)



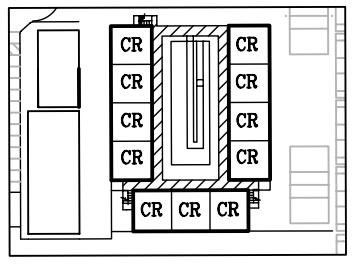
California Middle School (415)  
 1600 Vallejo Way  
 SACRAMENTO CITY UNIFIED SCHOOL DISTRICT

EXISTING SITE DIAGRAM  
 DECEMBER 2015

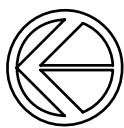




BLDG. A05 SECOND FLOOR PLAN



BLDG. P01 SECOND FLOOR PLAN



NORTH

Scale 1"=150'

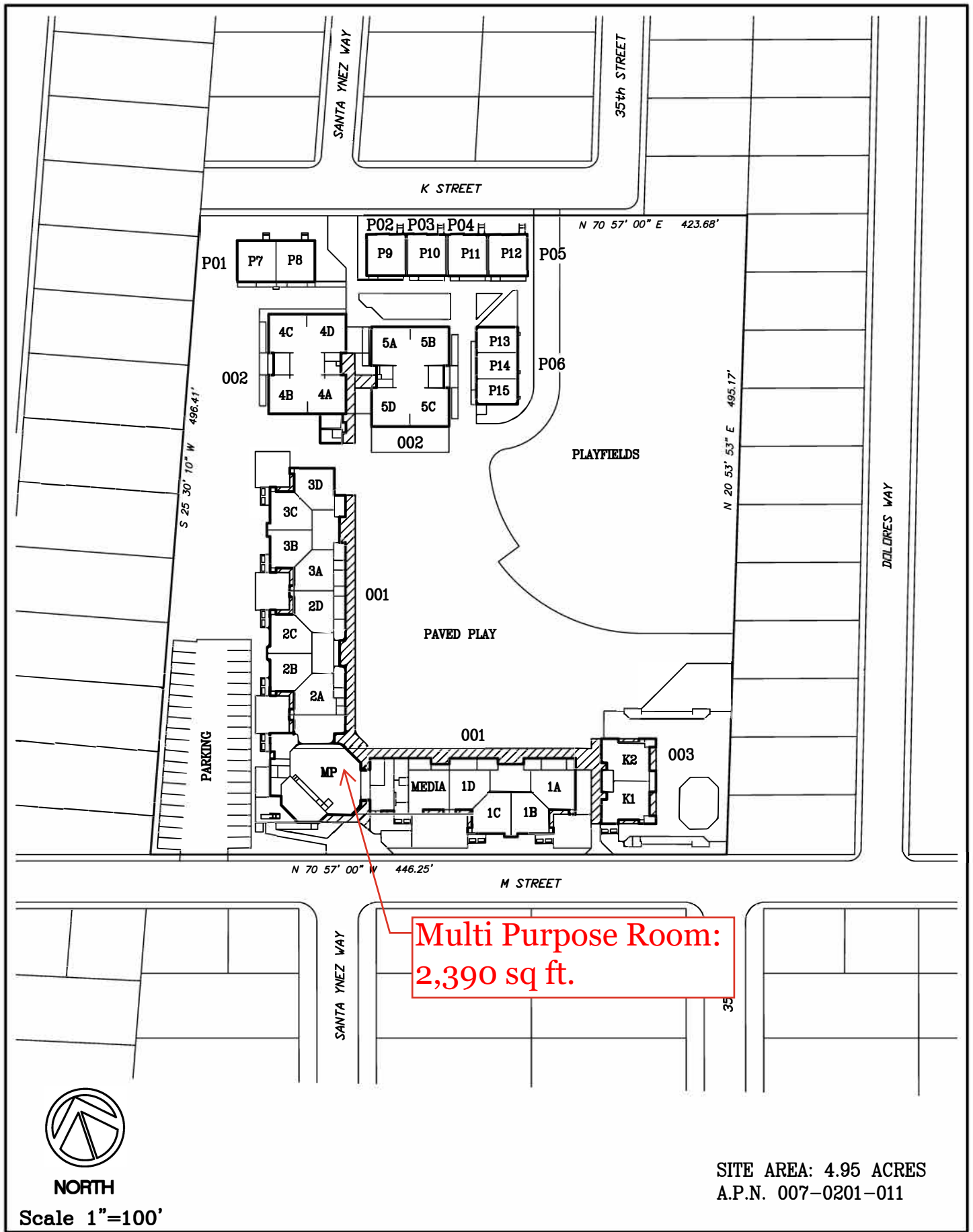
PARTIAL SITE PLAN  
 SITE AREA: 29.0 ACRES  
 A.P.N. 012-0260-003

C.K. McClatchy High School (510)  
 3066 Freeport Blvd.  
 SACRAMENTO CITY UNIFIED SCHOOL DISTRICT

# EXISTING SITE DIAGRAM

DECEMBER 2003





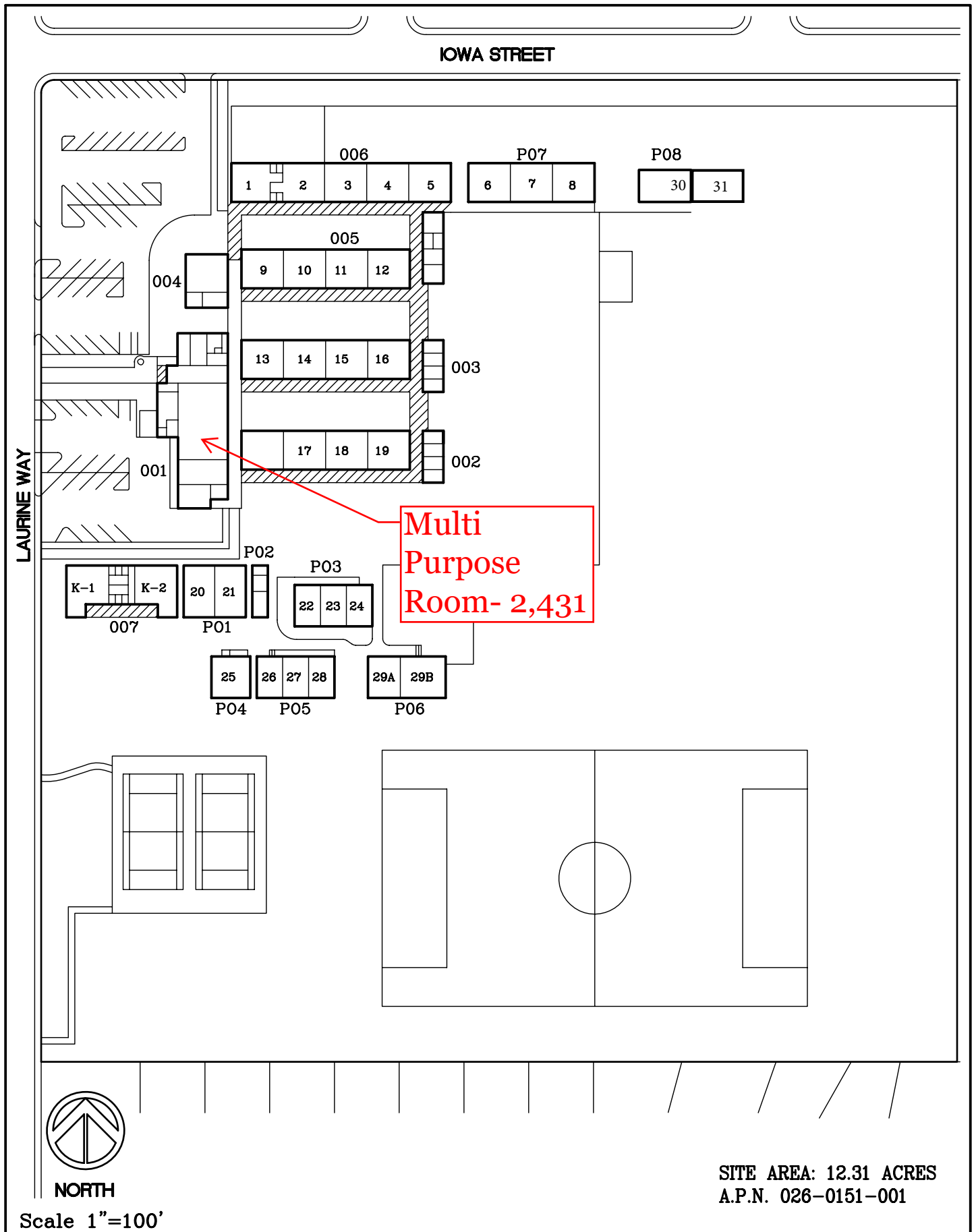
NORTH

Scale 1"=100'

SITE AREA: 4.95 ACRES  
A.P.N. 007-0201-011

David Lubin Elementary School (059)  
3535 M Street  
SACRAMENTO CITY UNIFIED SCHOOL DISTRICT

EXISTING SITE DIAGRAM  
DECEMBER 2003

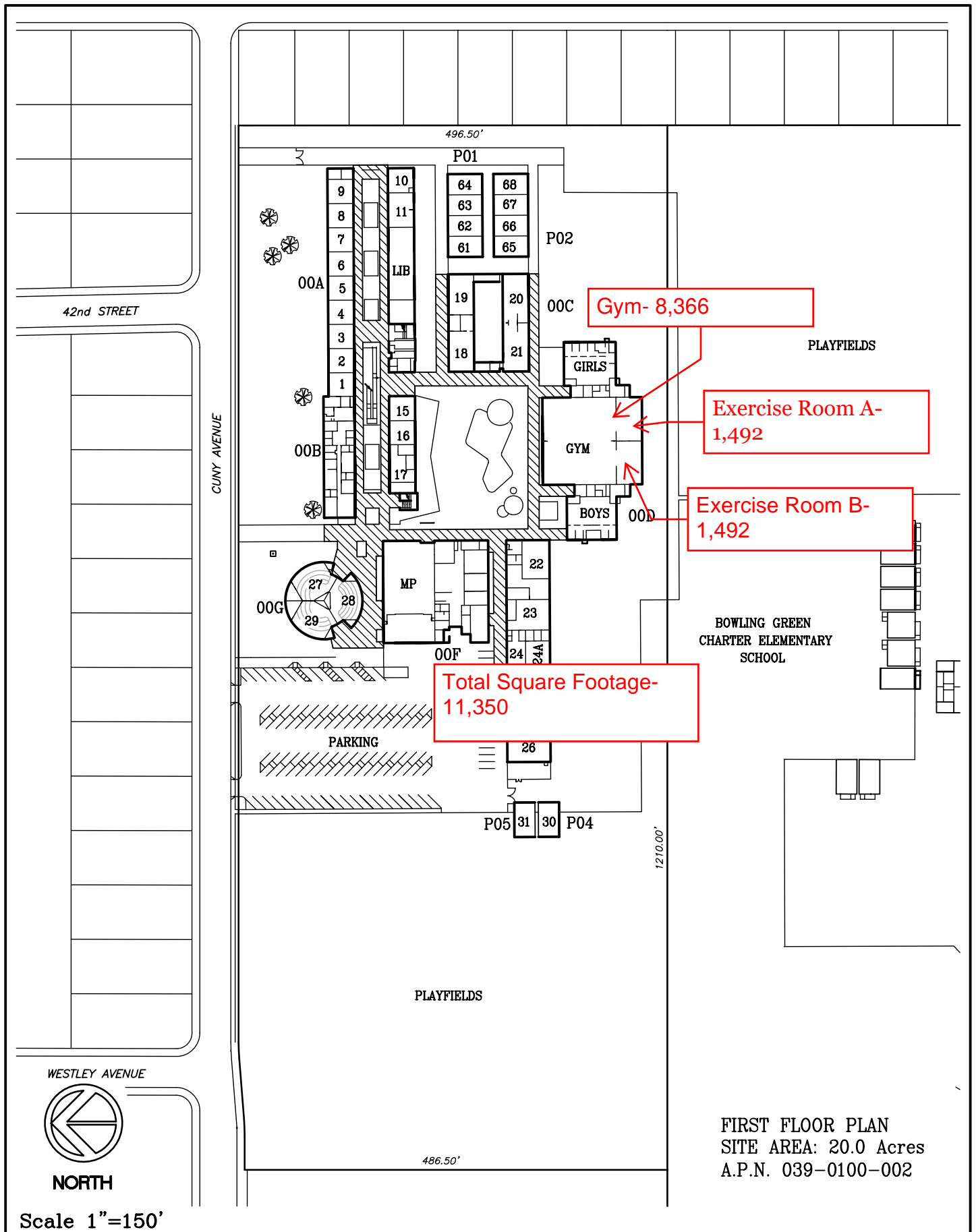


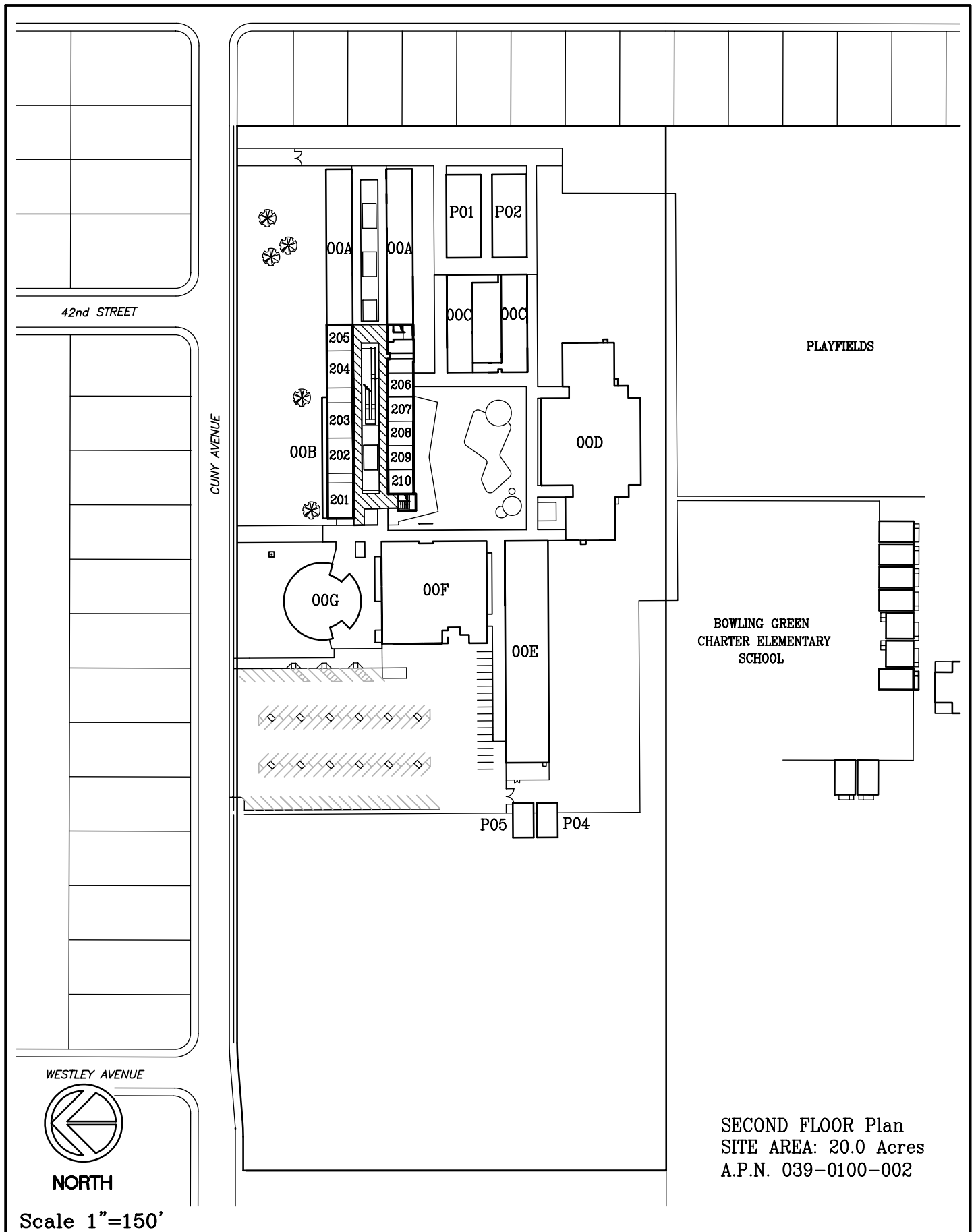
Ethel I. Baker Elementary School (108)  
 5717 Laurine Way  
 SACRAMENTO CITY UNIFIED SCHOOL DISTRICT

# EXISTING SITE DIAGRAM

OCTOBER 2001

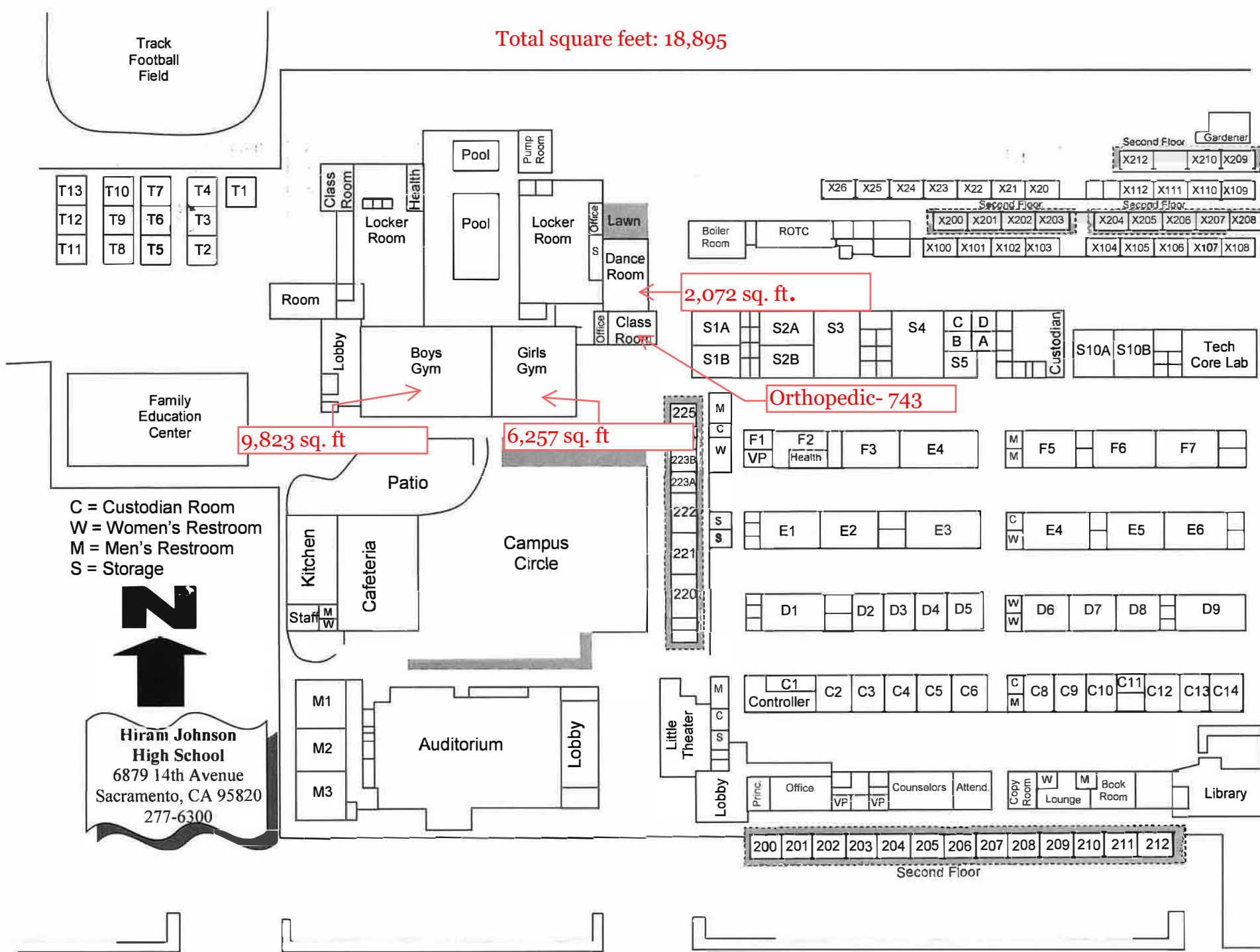
SITE AREA: 12.31 ACRES  
 A.P.N. 026-0151-001





SECOND FLOOR Plan  
 SITE AREA: 20.0 Acres  
 A.P.N. 039-0100-002

Total square feet: 18,895



9,823 sq. ft

6,257 sq. ft

2,072 sq. ft.

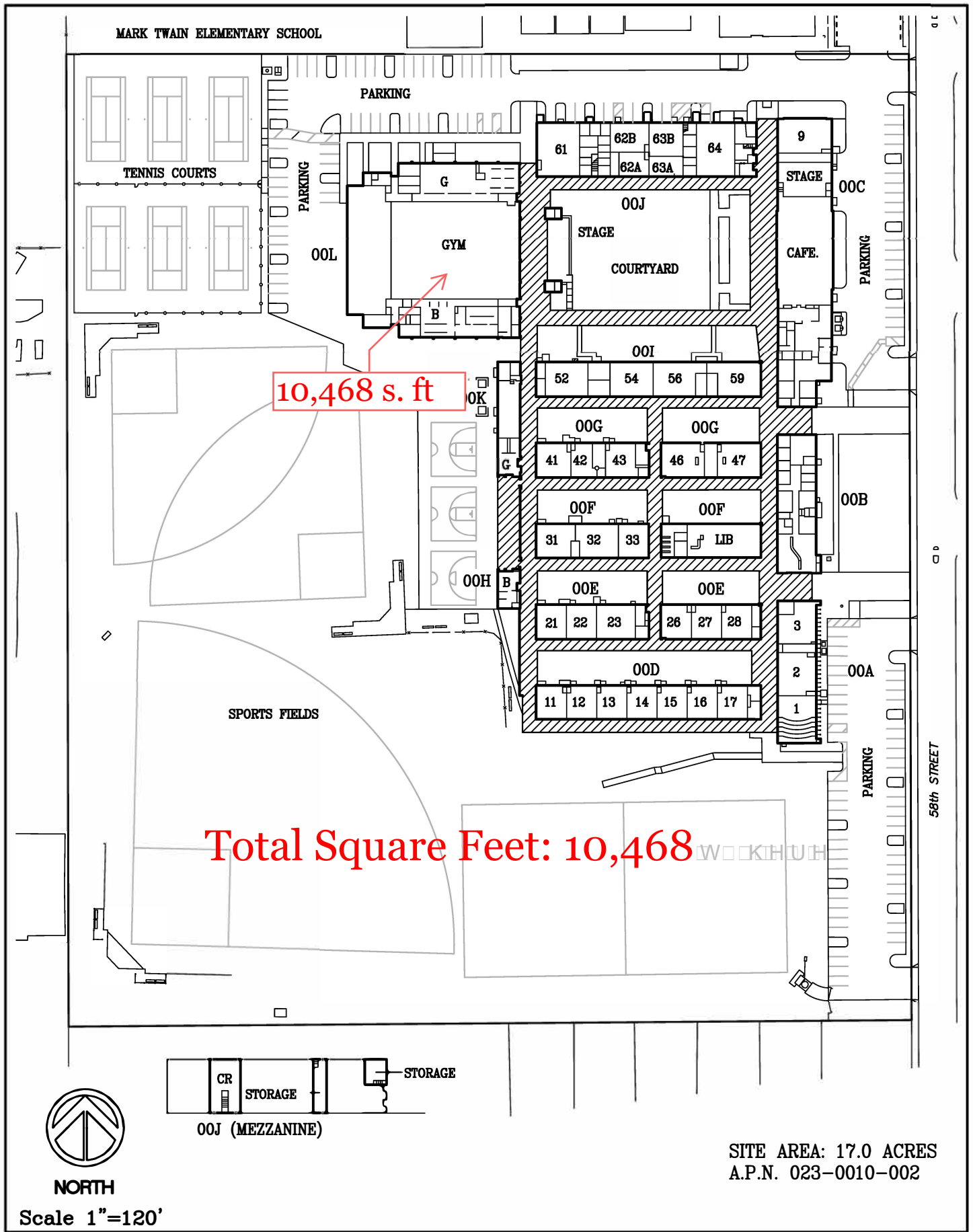
Orthopedic- 743

C = Custodian Room  
W = Women's Restroom  
M = Men's Restroom  
S = Storage



**Hiram Johnson High School**  
6879 14th Avenue  
Sacramento, CA 95820  
277-6300

14th Avenue



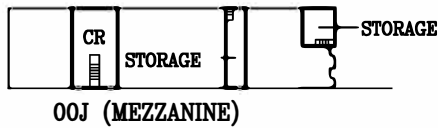
10,468 s. ft

Total Square Feet: 10,468



NORTH

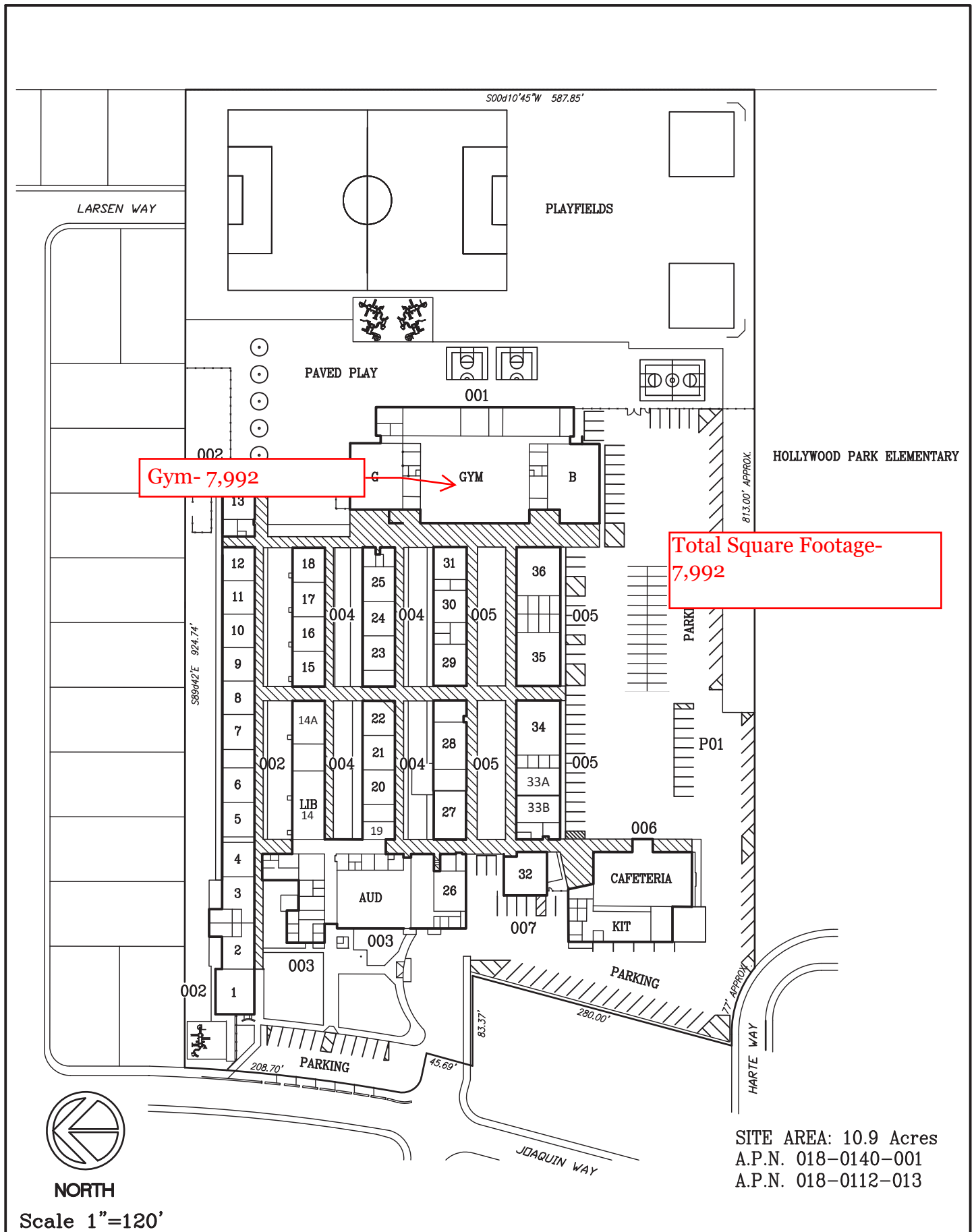
Scale 1"=120'



SITE AREA: 17.0 ACRES  
A.P.N. 023-0010-002

Hiram W. Johnson West Campus High School (521)  
5022 58th Street  
SACRAMENTO CITY UNIFIED SCHOOL DISTRICT

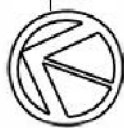
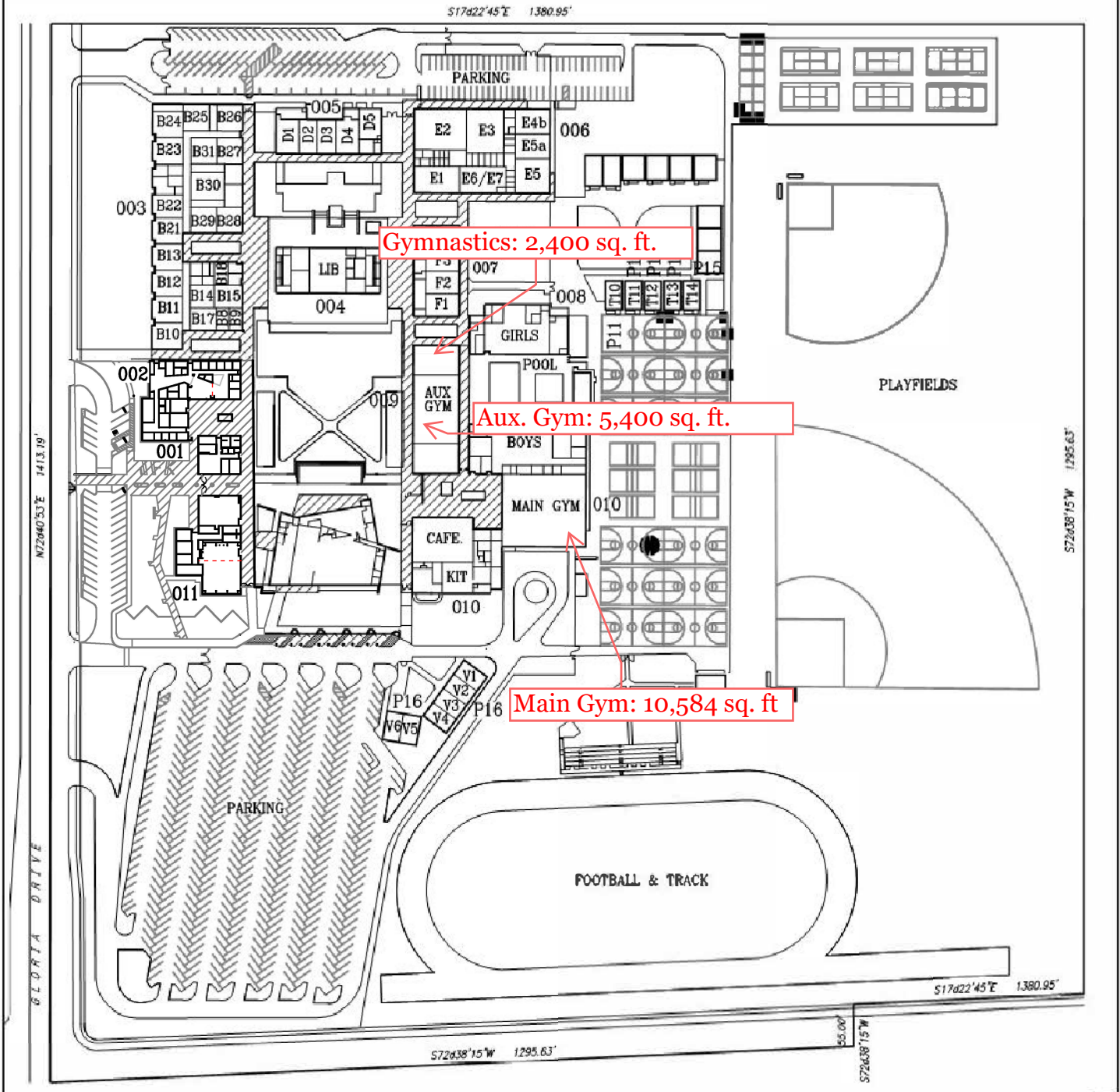
EXISTING SITE DIAGRAM  
DECEMBER 2003



Leonardo da Vinci K-8 School (151)  
 4701 Joaquin Way  
 SACRAMENTO CITY UNIFIED SCHOOL DISTRICT

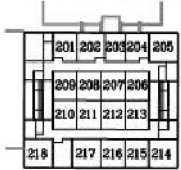
**EXISTING SITE DIAGRAM**  
 DECEMBER 2003

Total Square Feet: 18,384

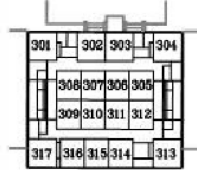


NORTH

Scale 1"=200'



004 (2nd FLOOR)



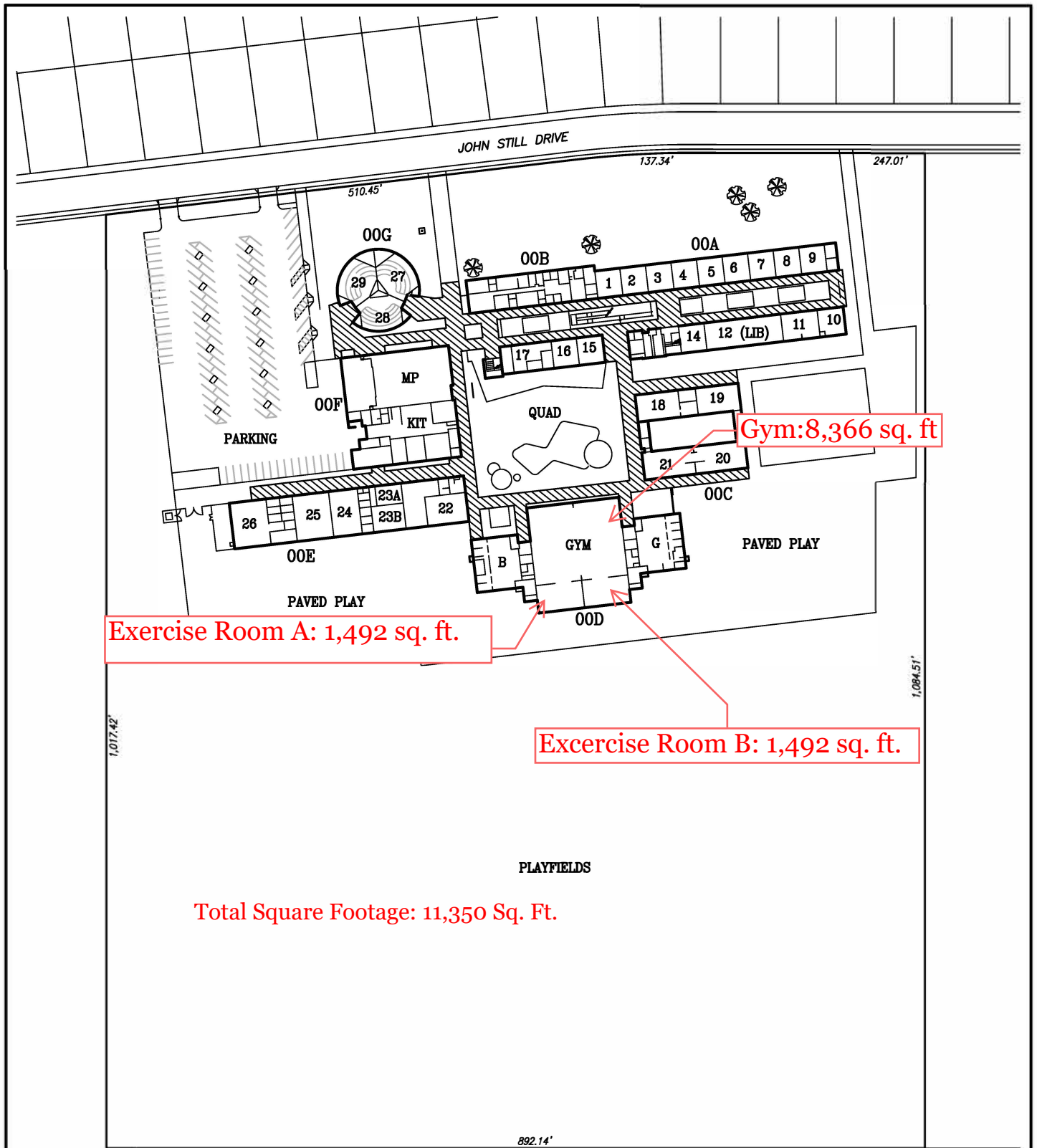
004 (3rd FLOOR)

SITE AREA: 43.43 ACRES  
A.P.N. 030-0370-020, 021

John F. Kennedy High School (625)  
6715 Gloria Drive  
SACRAMENTO CITY UNIFIED SCHOOL DISTRICT

EXISTING SITE DIAGRAM  
DECEMBER 2003

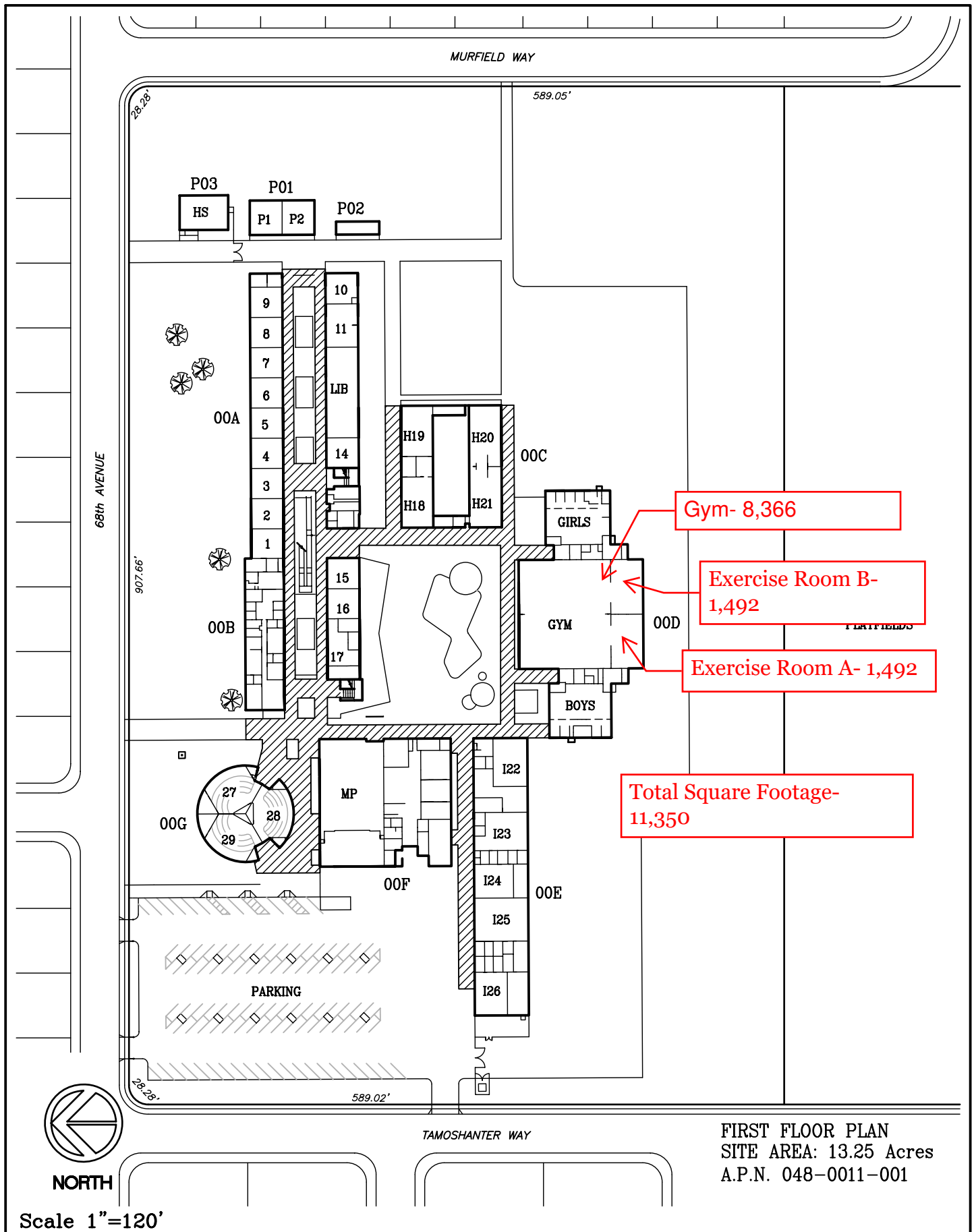




NORTH

Scale 1"=150'

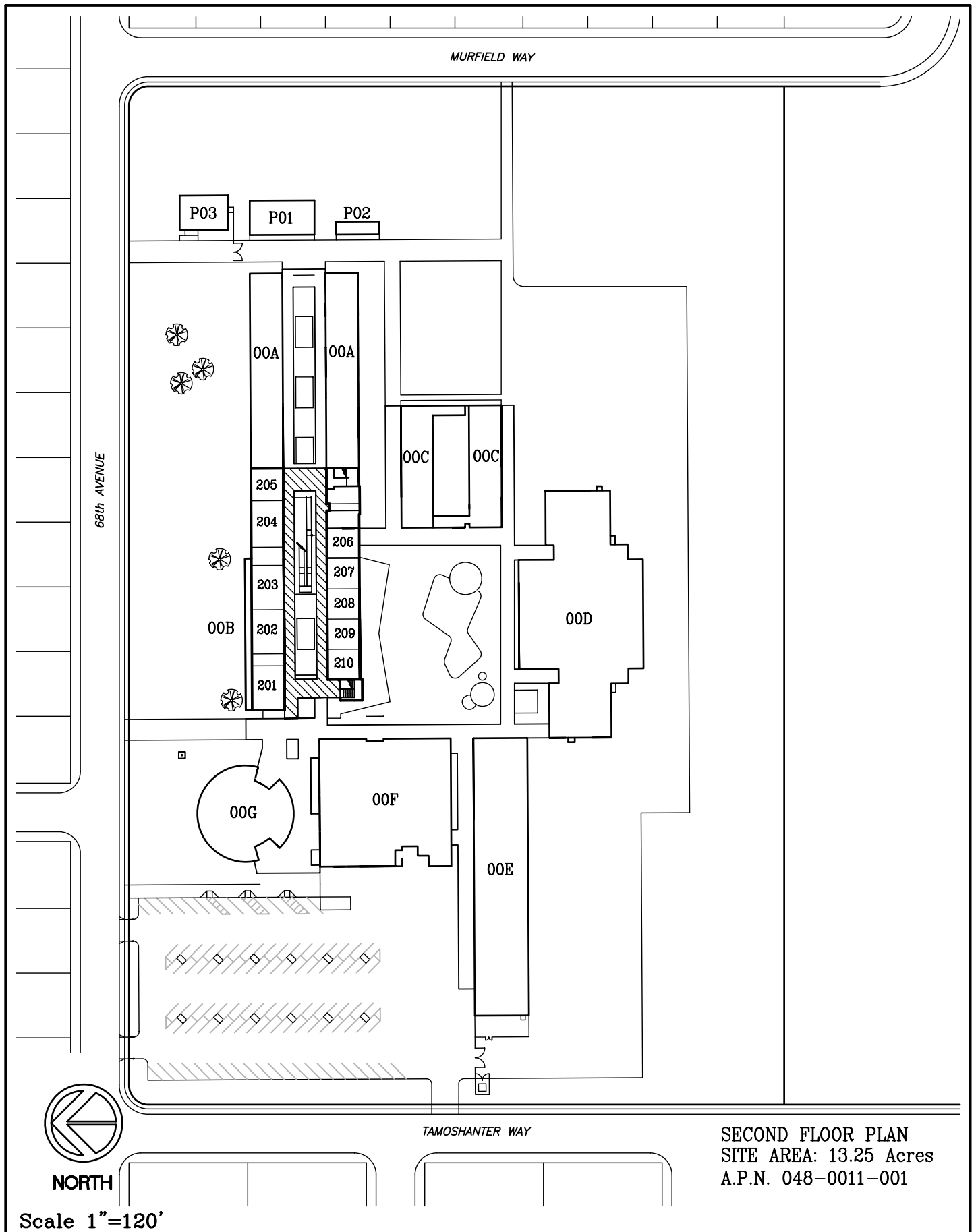
FIRST FLOOR PLAN  
 SITE AREA: 22.29 Acres  
 A.P.N. 052-0010-071



Rosa Parks Middle School (420) 1 of 2  
 2250-68th AVENUE  
 SACRAMENTO CITY UNIFIED SCHOOL DISTRICT

**EXISTING SITE DIAGRAM**  
 DECEMBER 2003

FIRST FLOOR PLAN  
 SITE AREA: 13.25 Acres  
 A.P.N. 048-0011-001

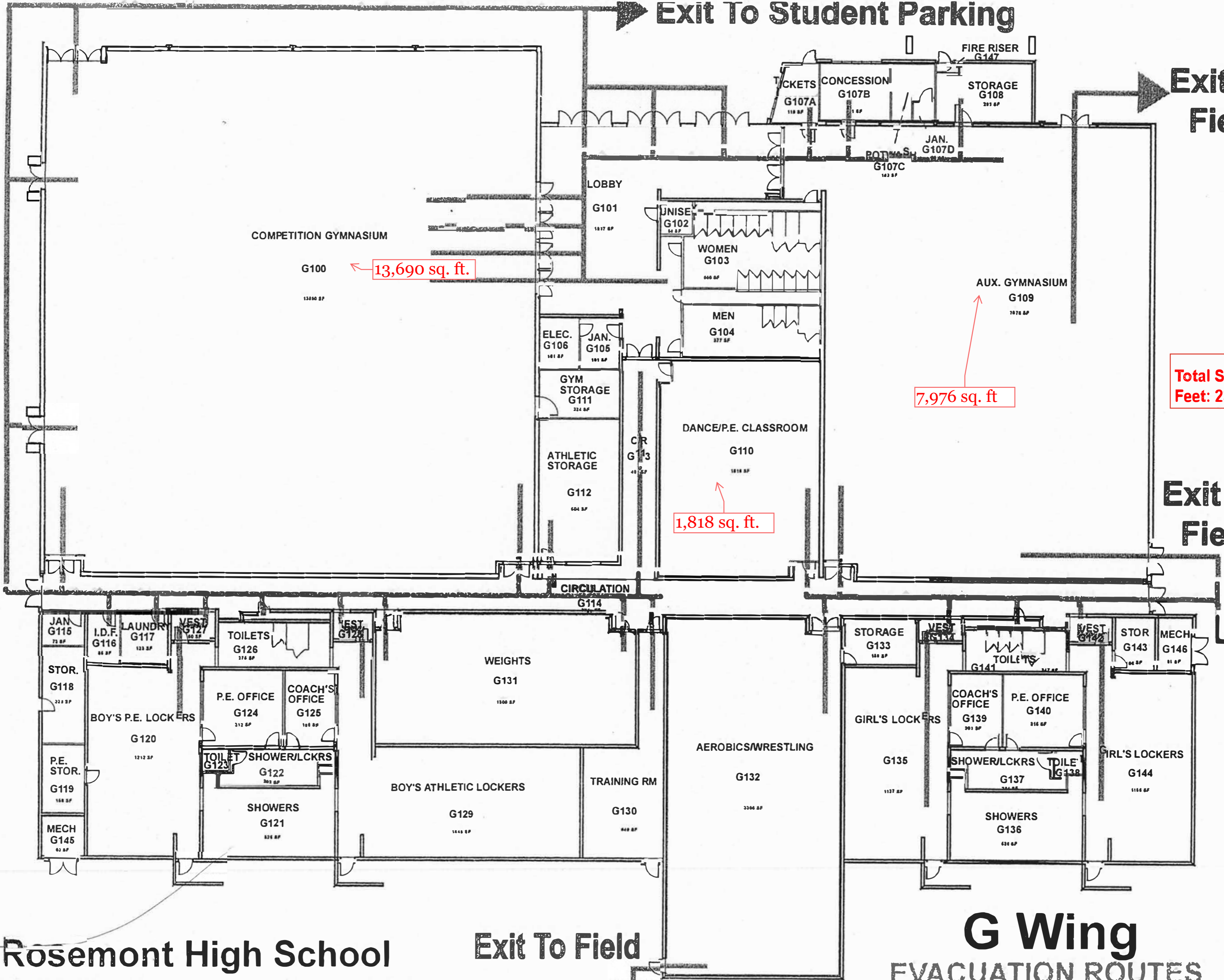


Rosa Parks Middle School (420) 2 of 2  
2250-68th AVENUE  
SACRAMENTO CITY UNIFIED SCHOOL DISTRICT

**EXISTING SITE DIAGRAM**  
DECEMBER 2003

Exit To Student Parking

Exit To Field



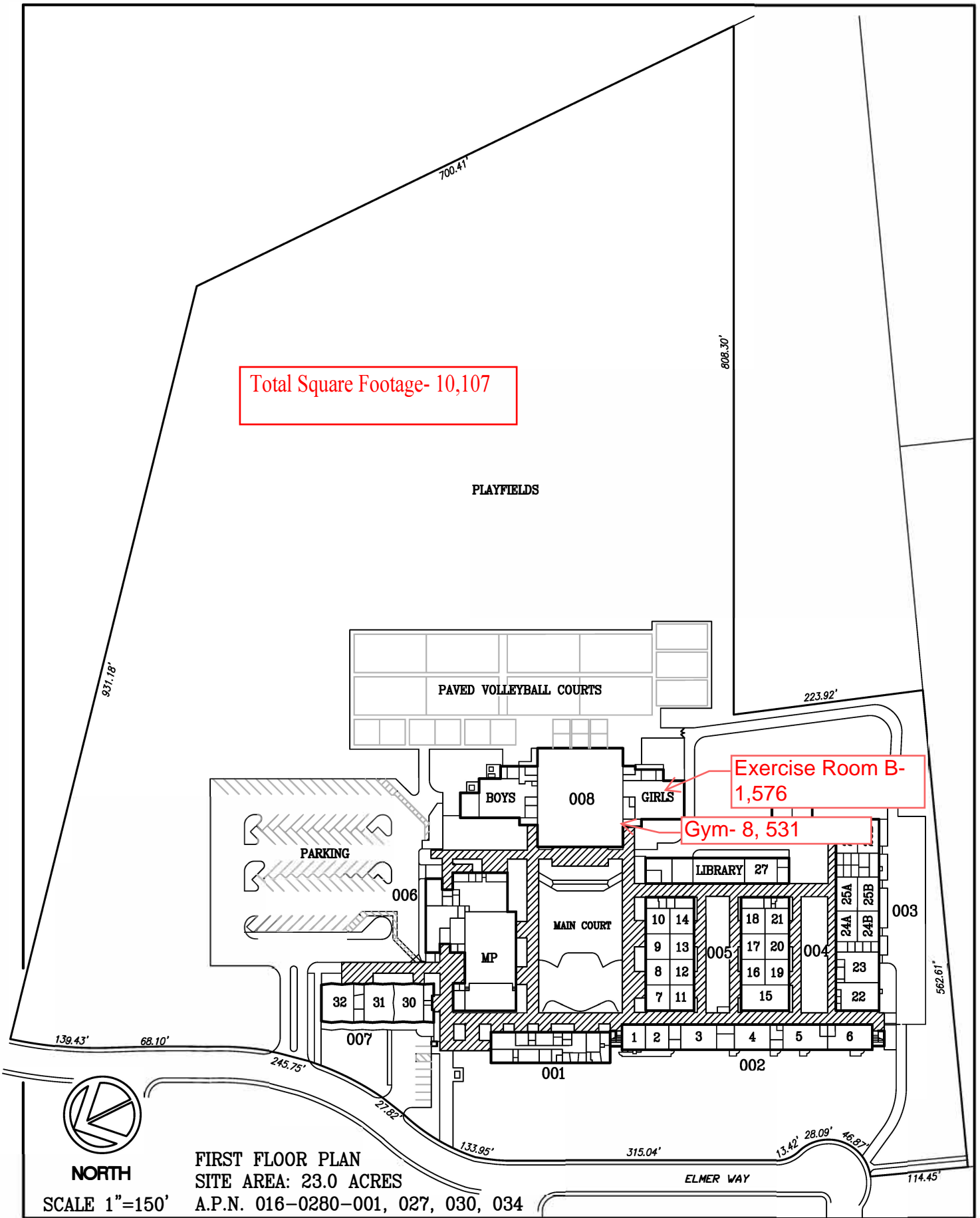
Total Square Feet: 23,484

Exit To Field

Rosemont High School  
9594 Kiefer Blvd. Sacramento, CA 95827

Exit To Field

**G Wing**  
EVACUATION ROUTES



Total Square Footage- 10,107

Exercise Room B- 1,576

Gym- 8, 531



NORTH

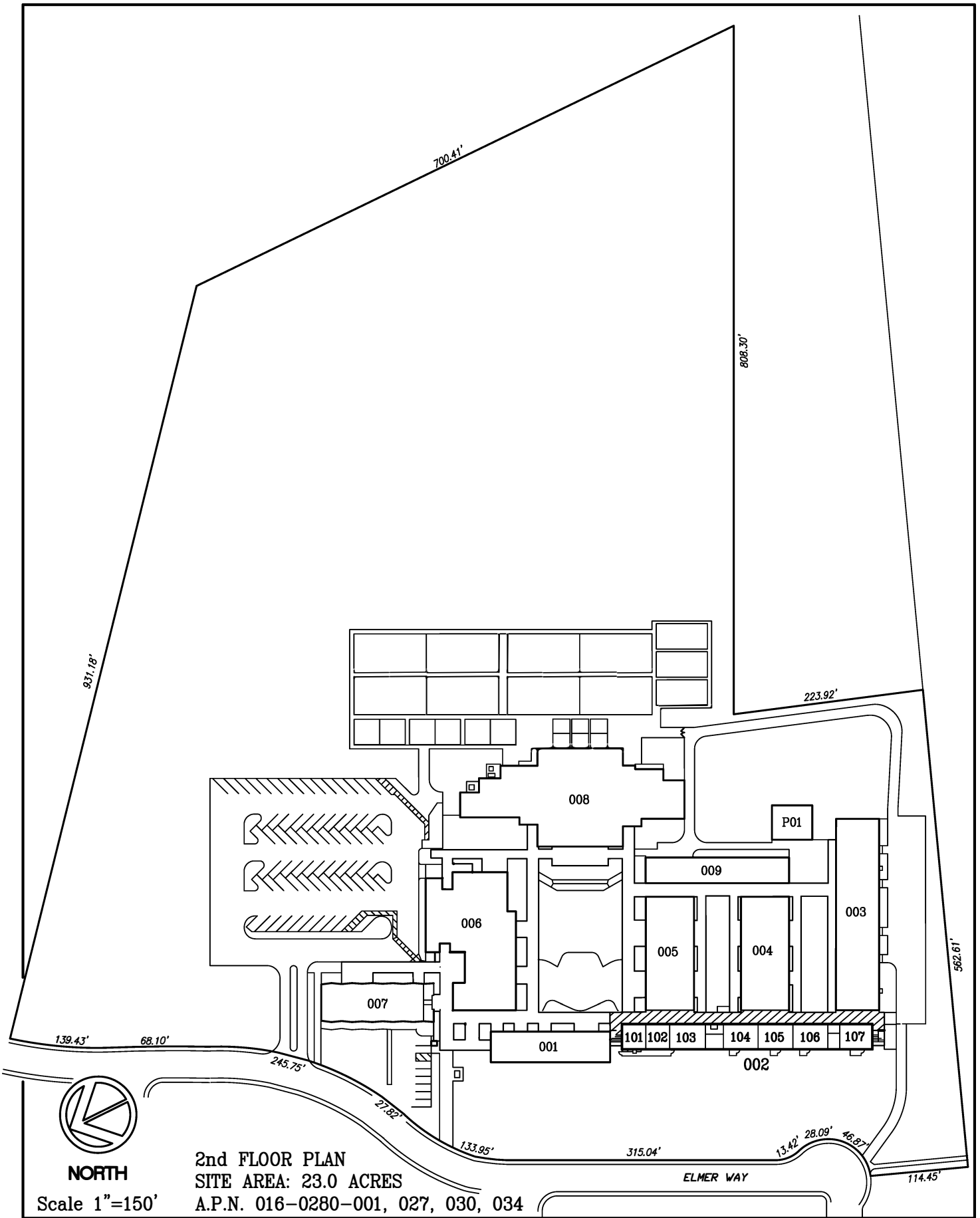
FIRST FLOOR PLAN  
SITE AREA: 23.0 ACRES

SCALE 1"=150' A.P.N. 016-0280-001, 027, 030, 034

ELMER WAY

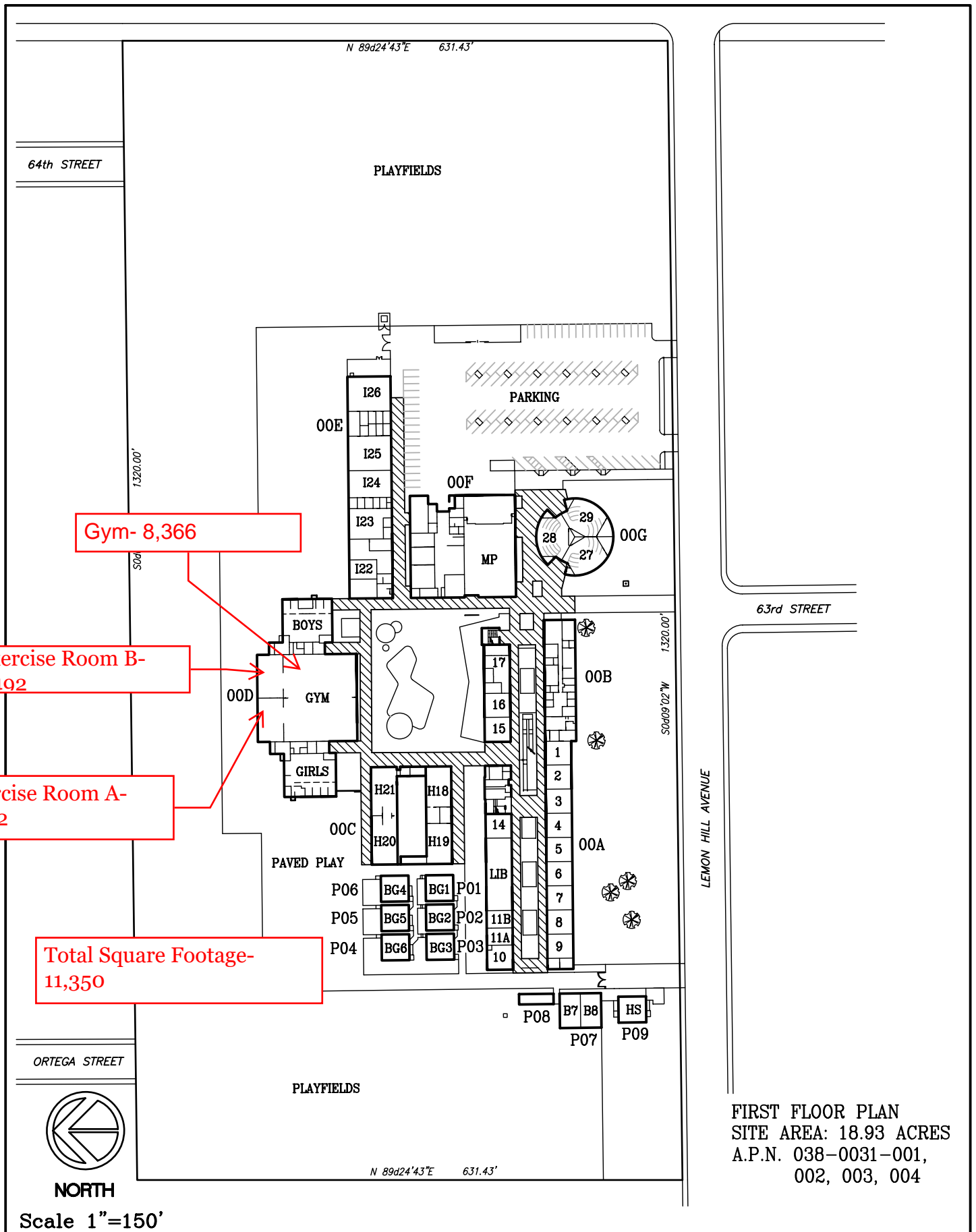
Sam Brannan Middle School (480) 1 of 2  
5301 Elmer Way  
SACRAMENTO CITY UNIFIED SCHOOL DISTRICT

EXISTING SITE DIAGRAM  
DECEMBER 2003



Sam Brannan Middle School (480) 2 of 2  
 5301 Elmer Way  
 SACRAMENTO CITY UNIFIED SCHOOL DISTRICT

**EXISTING SITE DIAGRAM**  
 DECEMBER 2003



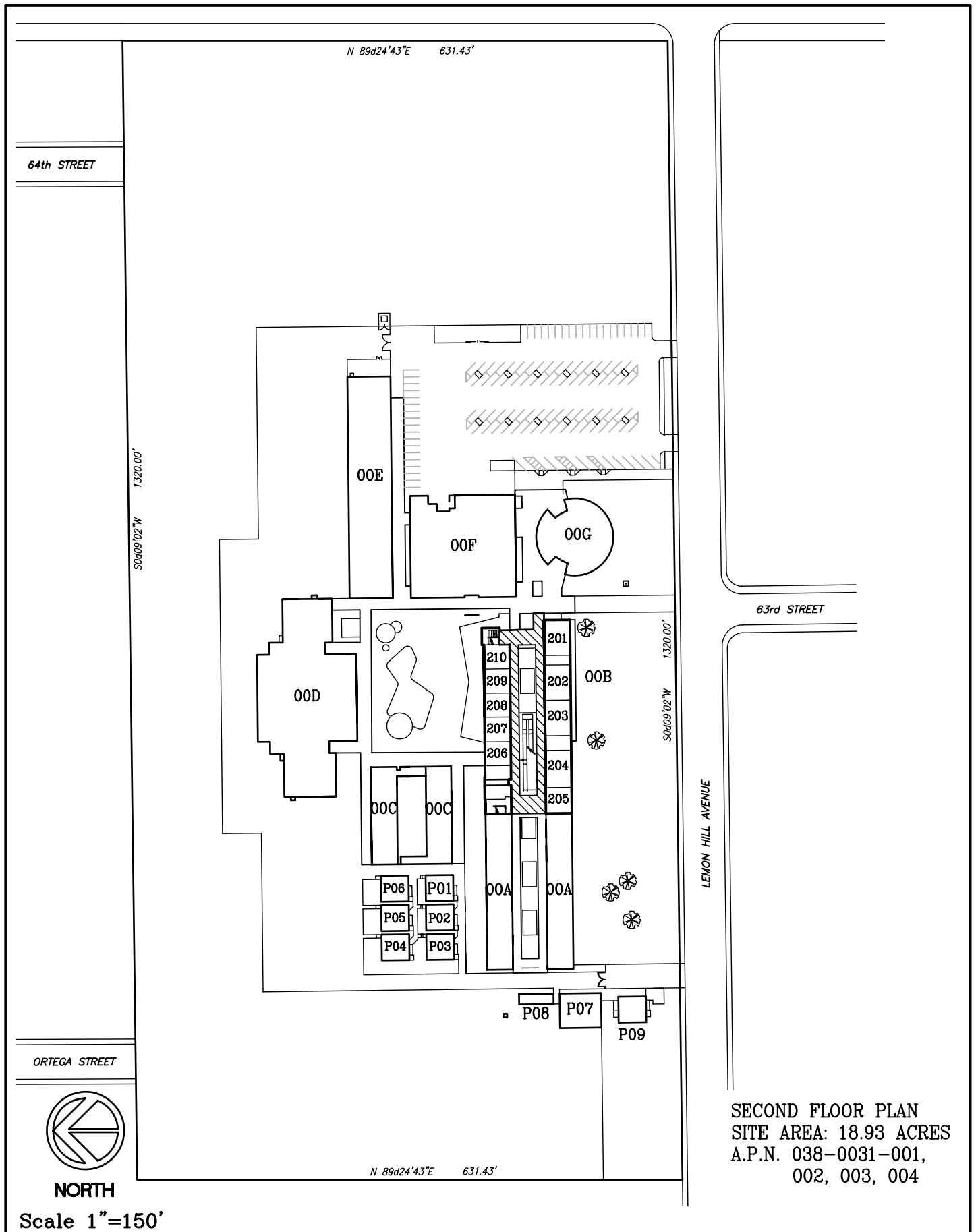
Gym- 8,366

Exercise Room B- 1,492

Exercise Room A- 1,492

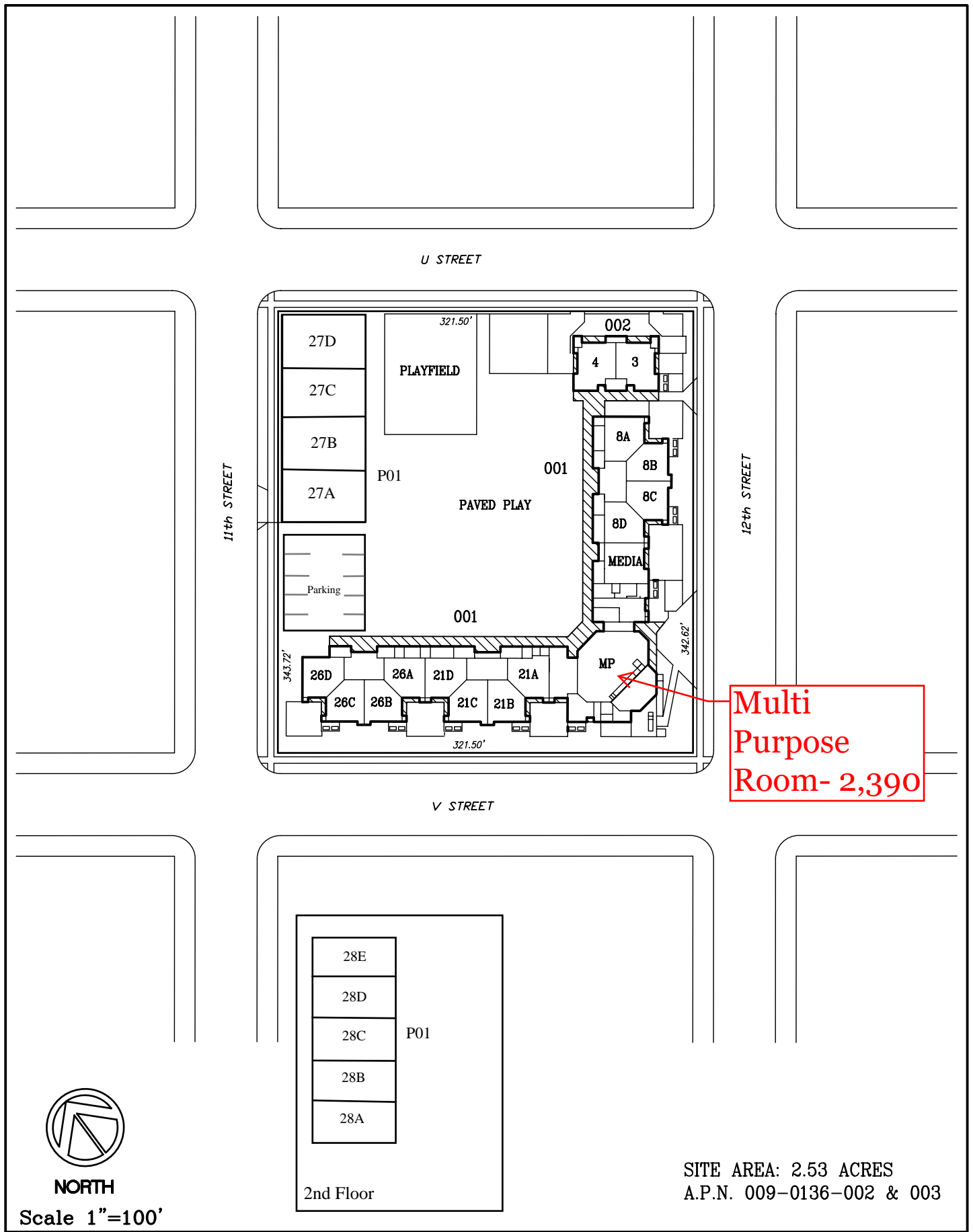
Total Square Footage- 11,350

FIRST FLOOR PLAN  
 SITE AREA: 18.93 ACRES  
 A.P.N. 038-0031-001,  
 002, 003, 004



SECOND FLOOR PLAN  
 SITE AREA: 18.93 ACRES  
 A.P.N. 038-0031-001,  
 002, 003, 004





Multi Purpose Room- 2,390

William Land Elementary School (384)  
 2120 12th Street  
 SACRAMENTO CITY UNIFIED SCHOOL DISTRICT

**EXISTING SITE DIAGRAM**  
 DECEMBER 2003