



## Update on Conditions of Readiness for School Reopening

Board Meeting  
February 18, 2021

Agenda Item No. 7.4

Presented by:

Christine Baeta, Chief Academic Officer

Nathaniel Browning, Director of Facilities

Diana Flores, Director of Nutrition Services

Victoria Flores, Director of Student Support and Health Services

Vincent Harris, Chief of Continuous Improvement and Accountability

Keyshun Marshall, Coordinator of Risk Management

Cancy McArn, Chief Human Resources Officer



# Return Together Vision Statement

Sac City Unified will disrupt the current status quo of systemic inequity to meet the academic, social and emotional needs of all our students, especially our most vulnerable students. Such disruption must result in higher learning standards and accountability. **Our Return Together Plan will abide by all county public health orders to safely serve as many students as possible through in-person instruction.** Because we recognize the evolving nature of this pandemic, all of our learning models will meet the needs of all students and mitigate learning loss, assuring that all students are given an equal opportunity to graduate with the greatest number of postsecondary choices from the widest array of options.

# Sacramento County Public Health - COVID-19 Levels

County risk level	Adjusted case rate* 7-day average of daily COVID-19 cases per 100K with 7-day lag, adjusted for number of tests performed	Positivity rate** 7-day average of all COVID-19 tests performed that are positive	
		Entire county	Healthy equity quartile
<p><b>WIDESPREAD</b></p> <p>Many non-essential indoor business operations are closed</p>	<p><b>More than 7.0</b></p> <p>Daily new cases (per 100k)</p>	<p><b>More than 8.0%</b></p> <p>Positive tests</p>	
<p><b>SUBSTANTIAL</b></p> <p>Some non-essential indoor business operations are closed</p>	<p><b>4.0 – 7.0</b></p> <p>Daily new cases (per 100k)</p>	<p><b>5.0 – 8.0%</b></p> <p>Positive tests</p>	<p><b>5.3 – 8.0%</b></p> <p>Positive tests</p>
<p><b>MODERATE</b></p> <p>Some indoor business operations are open with modifications</p>	<p><b>1.0 – 3.9</b></p> <p>Daily new cases (per 100k)</p>	<p><b>2.0 – 4.9%</b></p> <p>Positive tests</p>	<p><b>2.2 – 5.2%</b></p> <p>Positive tests</p>
<p><b>MINIMAL</b></p> <p>Most indoor business operations are open with modifications</p>	<p><b>Less than 1.0</b></p> <p>Daily new cases (per 100k)</p>	<p><b>Less than 2.0%</b></p> <p>Positive tests</p>	<p><b>Less than 2.2%</b></p> <p>Positive tests</p>

# Re-Opening Tier Parameters

*The county must meet the criteria for the prior two consecutive weeks for case rate and positivity rate before advancing to the next tier.*

## Purple

- PK to 6<sup>th</sup> grade schools are allowed to open for in-person instruction when 7-day avg. case rate is less than 25 cases a day per 100k residents
- Sacramento County has been eligible since approximately February 16th
- 7<sup>th</sup> to 12<sup>th</sup> grade schools not already open to all students for in-person instruction must remain closed
- Schools conducting in-person instruction or supports must maintain mitigation measures, including social distancing, face coverings, and sanitization, in compliance with schools guidance from CDPH and Sacramento County Public Health.

## Red

- Sacramento County will move to tier red when the case rate is less than 4-7 cases per day for 100k residents (Currently 18.7) and the positivity rate is between 5-8% (Currently 6%)
- After 5 consecutive days of maintaining the red tier, all grade levels may open for in-person instruction (e.g. PK to 12<sup>th</sup> grade).
- Schools conducting in-person instruction or supports must maintain mitigation measures, including social distancing, face coverings, and sanitization, in compliance with schools guidance from CDPH and Sacramento County Public Health.



# California Department of Public Health Sacramento County COVID-19 Cases

Sacramento County **Purple/Widespread Risk Level**

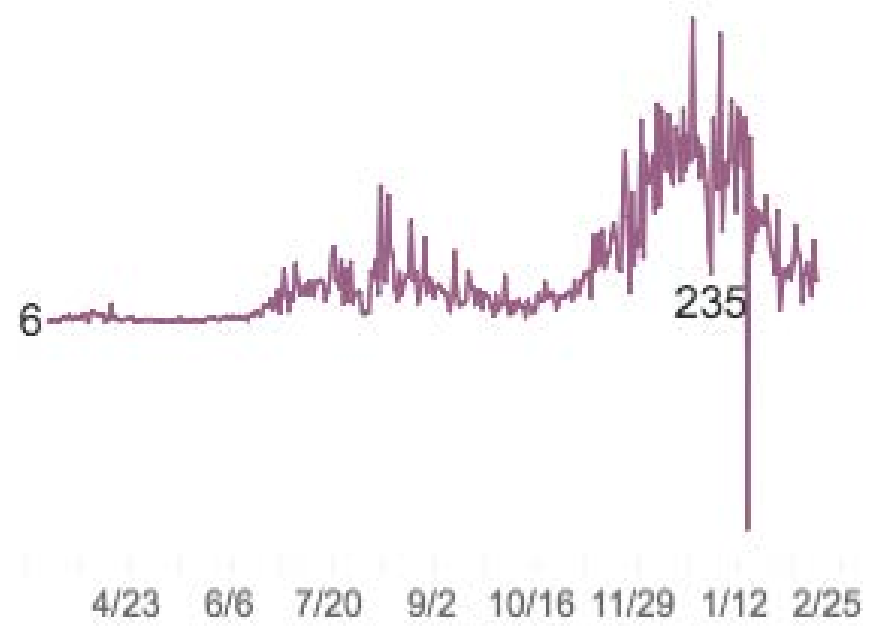
## Sacramento CASES

91,091

1 Day Δ	7 Day Δ	14 Day Δ
+235	+1,824	+4,235
+0.3%	+2.0%	+4.9%

7 Day Avg.	14 Day Avg.	Weekly % Change
261	303	-24.3%

Day-Over-Day New Cases



US Total Cases: 27,417,468

- 18.7 cases a day per 100K residents
- 6.0% positivity rate
- 9.2% health equity quartile positivity rate

Schools are allowed to open when 7-day avg. case rate is less than 25 cases a day per 100k residents<sub>5</sub>



# Learning Hubs & Athletics

- Learning Hubs are allowable under the preexisting CDPH small groups/cohort guidance. Cohorts cannot exceed 16 individuals per cohort or more than 25% of the entire school population.
- Outdoor only sports conditioning and competitive play using equipment is allowable for physical education classes and student athletics.



# Center for Disease Control Guidance

## Operational Strategy for K-12 Schools through Phased Mitigation

- Consistent implementation of a combination of strategies to reduce the spread of COVID-19, including consistent mask use; maintaining at least 6 feet of distance as much as possible; handwashing and respiratory etiquette; cleaning and maintaining healthy facilities; and carrying out contact tracing in combination with isolation and quarantine
- Recommended steps to follow depending on how COVID-19 is spreading in the community
- Indicators to reflect the level of COVID-19 in the community
- Vaccination for teachers, school staff, and in communities (not a condition for reopening schools)
- Testing to identify people infected with the virus that causes COVID-19 to limit transmission and outbreaks



# Center for Disease Control Guidance

## The Science Brief: Transmission of SARS-CoV-2 in K-12 Schools

- CDC has also released the latest scientific evidence on COVID-19 among children and adolescents, in school settings, and about virus transmission, as well as other key considerations.
- Evidence shows that many K-12 schools that have strictly implemented mitigation strategies have been able to safely open for in-person instruction and remain open.
- Given the importance of key services schools offer and the benefits of in-person learning for students, it is critical for K-12 schools to open for in-person instruction, and stay open, as safely and as soon as possible.





# COVID Vaccine

- February 16th Sacramento County moved further into the Phase 1b group to include education & childcare staff
- Individuals may sign up for vaccine updates through:
  - <https://www.sacounty.net/COVID-19/Pages/CoronavirusVaccine.aspx>
  - health insurance provider
  - Dignity Health/SCUSD Clinics
    - Friday 2/19 - first dose & 3/12 - second dose
    - Friday 2/26 - first dose & 3/19 - second dose
    - Friday 3/5 - first dose & 3/26 - second dose
    - Vaccination is voluntary and by appointment only

**COVID-19 Vaccine Distribution Phases** SACRAMENTO COUNTY PUBLIC HEALTH  
Promote • Prevent • Protect

**PHASE 1a** Persons at risk of exposure to SARS-CoV-2 through their work in any role in direct health care or long-term care settings and residents of long term care facilities.

**Vaccinating NOW**

**Tier 1**

- ✓ Acute care, psychiatric and correctional facility hospital staff
- ✓ Staff at skilled nursing facilities, assisted living facilities, and similar settings for older or medically vulnerable individuals
- ✓ Residents in long-term care settings
- ✓ Paramedics, EMTs, and others providing emergency medical services
- ✓ Staff at dialysis centers

**Vaccinating NOW**

**Tier 2**

- ✓ Intermediate care facilities for persons who need non-continuous nursing supervision and supportive care
- ✓ Home health care and in-home supportive service staff
- ✓ Community health workers, including promotoras
- ✓ Public Health field staff medical services
- ✓ Staff at Primary care clinics, including federally qualified health centers, rural health centers, correctional facility clinics, and urgent care clinics

**Vaccinating NOW**

**Tier 3**

- ✓ Staff at specialty clinics
- ✓ Laboratory workers
- ✓ Dental and other oral health clinic staff
- ✓ Pharmacy staff not working in settings at higher tiers

**PHASE 1b** Vaccinating NOW for some populations below

**Tier 1**

- ✓ Persons aged 65 years and older
- ✓ Law enforcement and emergency services
- ✓ Child care
- ✓ Education
- Food and agriculture

**Tier 2**

- Congregate settings with outbreak risk, such as those who are incarcerated or experiencing homelessness
- Frontline essential workers, including manufacturing, transportation, facilities and services

**PHASE 1c**

- Persons aged 50+
- Persons aged 16 to 64 years with high-risk medical conditions (may begin March 15, through healthcare providers)
- Other essential workers. Examples include those working in the following industries: chemical, communications/IT, defense, energy, finance, community based Govt. operations, water, etc.

Updated 2/14/21



# COVID Vaccine

- Initial priority groups communicated on 2/16

Priority Groups	Priority Group
Nutrition Services Youth Development Elementary Special Education teachers and aides Elementary Site Administration Elementary Facilities (Plant Managers and Custodians) Elementary Office Staff (Office Managers and Clerks) IT Staff Learning Hub Staff	1
EK - 3rd Grade Teachers Secondary Special Education	2
4-6th Grade Teachers High School Staff and Educators Middle Schools Staff and Educators	3
Remaining Facilities/Maintenance & Operations staff Serna Center staff Board of Education Superintendent	4



# COVID Vaccine

- Revised priority groups
- 1,957 invites sent out for the 2/19 Vaccine Clinic
- Approximately 1,000 staff registered
- Next round of invites will go out as soon as vaccine supply is confirmed for next week

Priority Groups	Priority Group
Nutrition Services (including re-assigned CD & Transportation staff) Youth Development Elementary Special Education teachers and aides Elementary Site Administration Elementary Facilities (Plant Managers and Custodians) Elementary Office Staff (Office Managers and Clerks) IT Staff Learning Hub Staff Facilities/Maintenance & Operations staff 65+ EK - 3rd Grade Teachers	1
Special Education 4-6th Grade Teachers High School Staff and Educators Middle Schools Staff and Educators Athletic Coaches Adult Education Child Development Transportation	2
Classified & Certificated Substitutes Remaining Serna Center Department staff Board of Education Superintendent	3



# COVID Vaccine



# Nutrition Services

[Mayor Steinberg Sacramento Strong Video](#)

*return*  
*to* **NUTRITION**

## **Hybrid Meal Access**

Meals will continue to be provided each day at no cost whether students participate in on-campus learning or distance learning. Multiple days of meals will be provided through curbside distribution to students engaged in distance learning.

## **In Person Meal Distribution**

Students engaged in on campus learning will pick up meals in the cafeteria in small groups (cohorts) while practicing physical distancing measures and/or outdoors at secondary schools as grab and go options. Meal consumption will take place in the classroom or outdoors depending on the grade level.

## **Water**

Disposable drinking cups will be provided for elementary classrooms which have sinks for water. Secondary students will be encouraged to bring refillable bottled water from home. Bottled water will be made available as needed.



# REOPENING DASHBOARD

## Conditions for Reopening Dashboard

Home

Español / Spanish

Hmoob / Hmong

中文 / Chinese

Tiếng Việt / Vietnamese

FAQs

Our team is hard at work to ensure that our students, staff, and community remain safe as we plan to reopen. You can read more about what our district is doing to go above and beyond local, state, and federal recommendations and requirements here.

\*AAB (Above and Beyond) Indicates a Condition that is not Required by Local, State, or Federal Entities

\*SSA (Safe Schools for All) Indicates a Metric indicated in the Governor's Safe Schools for All Plan

*Dashboard Updated: February 12, 2021*



COMMUNICATION



SITE SAFETY



VENTILATION



HYGIENE



# Completed Dashboard Metrics Communications



- Health and Safety Plan:
  - Published (continually revised) **COMPLETED**
  - Videos and website published **COMPLETED**
  - Contact Tracing Procedures **COMPLETED**
  
- Health Promotion Practices (Flu Clinic/COVID Clinic) **COMPLETED**
- SCUSD Dashboard on positive cases/exposures **COMPLETED**



# Completed Dashboard Metrics Communications

Return to Health revisions:



- In-Person reopening criteria
- Stay at Home/Return to School Guidelines
- Quarantine timelines
- Travel advisories
- COVID Vaccine
- COVID Testing
- Cohorting/Stable Groups
- Classroom Pets





# Completed Dashboard Metrics

## Site Safety



- Care Room Supplies and procedures at each site **COMPLETED**
- Daily disinfection schedule **COMPLETED**
- Plexiglass barriers:
  - Front office locations **COMPLETED**
  - For student one-on-one assessments **COMPLETED**
  - Stanchions for crowd flow **COMPLETED**



# Completed Dashboard Metrics

## Site Safety



### ■ Daily Inspection Checklist

**COMPLETED**

- i. Updated to meet current CDPH and CDC guidelines



Sacramento City  
UNIFIED SCHOOL DISTRICT

#### DAILY INSPECTION FORM for COVID-19 REOPENING PLAN

*This form is designed to assist a school-site in verifying that COVID-related guidance and precautions are being adhered to as stated in the district reopening plan. It may also serve as a tool to identify which items need to be updated, retaught, or reinforced to make the school site safe for everyone.*

Date: \_\_\_\_\_

Person conducting inspection: \_\_\_\_\_

Location: \_\_\_\_\_

Preventive Practice	Outcome of Today's Review			Description/Notes	Corrective Action Taken
	Aligns with COVID-19 Prevention Program	Minor Concern (provide details)	Improvement Needed (indicate specific details for improvement)		
<b>Supplies All rooms, common areas are stocked with:</b>					
Disposable Face Covering (adult/children)					
Hand Sanitizer					
Hand Soap (if applicable)					
Reusable Mask Clips (if applicable)					
Gloves (if applicable)					
Face Shields (adult/children if applicable)					
Adult Smock (if applicable)					



# Completed Dashboard Metrics Ventilation & Hygiene



- HVAC units:
  - Reprogrammed to run continuously **COMPLETED**
  - Opened for outside air **COMPLETED**



- Disable Hand Dryers **COMPLETED**
- Disable drinking fountains **COMPLETED**
- Flush water lines **COMPLETED**
- Hand Soap and/or Sanitizer in all classrooms and common places **COMPLETED**
- Facial Tissue in all classrooms and common places **COMPLETED**



# Completed Dashboard Metrics Preparing for Employees



- All employees provided access to Hour Zero Training **COMPLETED**



- Testing available for all staff at Sac County Public Health Community Testing Sites **COMPLETED**
- Process for Reporting Positive Test **COMPLETED**



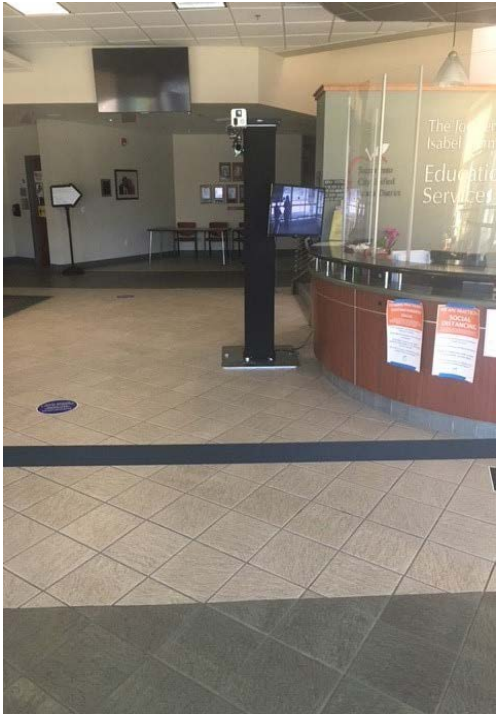
# Completed Dashboard Metrics Screening & Face Coverings



- Health Screening procedures **COMPLETED**
- Protocols for visitors or non-essential people on SCUSD sites **COMPLETED**
- Temperature check equipment at each site
  - Handheld **COMPLETED**
  - Temperature check equipment at each site **COMPLETED**
    - i. Thermal Scanning
      1. All Thermal Scanners are at sites
      2. Sites are receiving instruction on how to use them
- Face Coverings in all classrooms and common places **COMPLETED**
- Face Coverings required for all grade levels (except medical exemption) **COMPLETED**



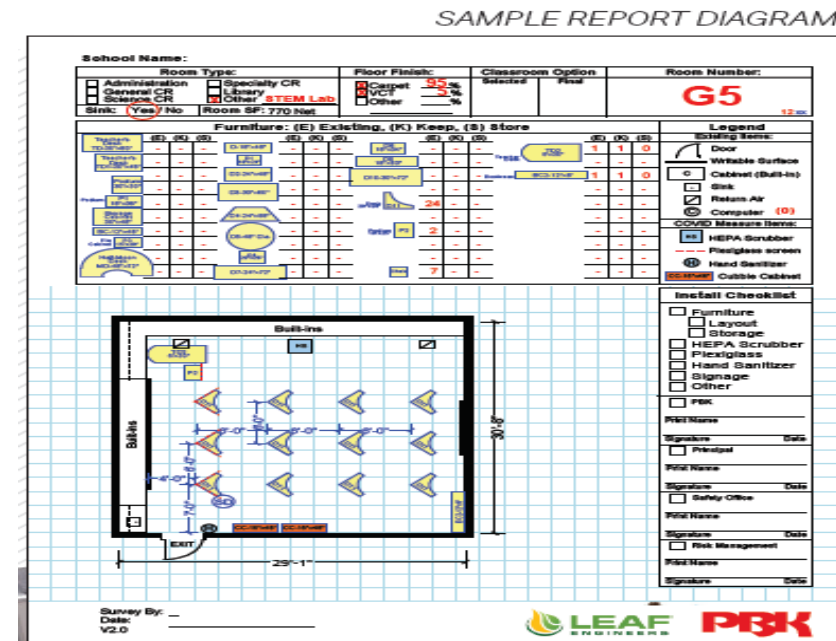
# Thermal Scanners





# Third Party Facilities Assessment

- PBK Architects walked each site and classroom and outlined any additional needs at each site/classroom that may be needed to best mitigate COVID-19.
- Any adjustments needed are being made now with the intent for PBK to return and confirm readiness by April





# In Progress Dashboard Metrics

## Site Safety



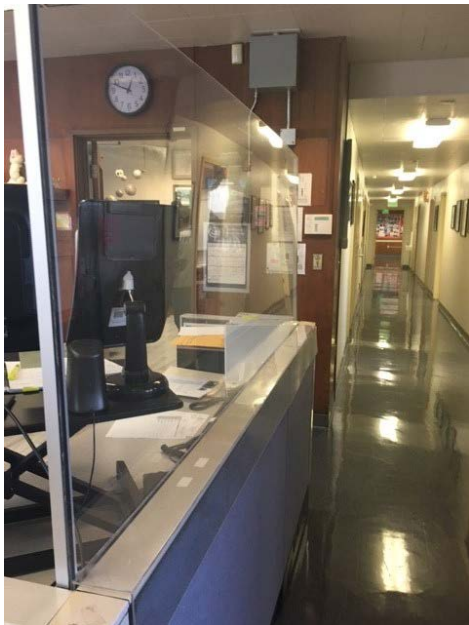
- Plexiglass barriers: **IN PROGRESS**
  - Front counters - complete
  - Library counters - will be completed by March 1
  - Multipurpose and meal counters - complete
- Directional signage and stanchions: **IN PROGRESS**
  - Stanchions provided to each site - complete
  - Directional arrows and signage provided - will be complete by March 12





# Plexiglass Installation

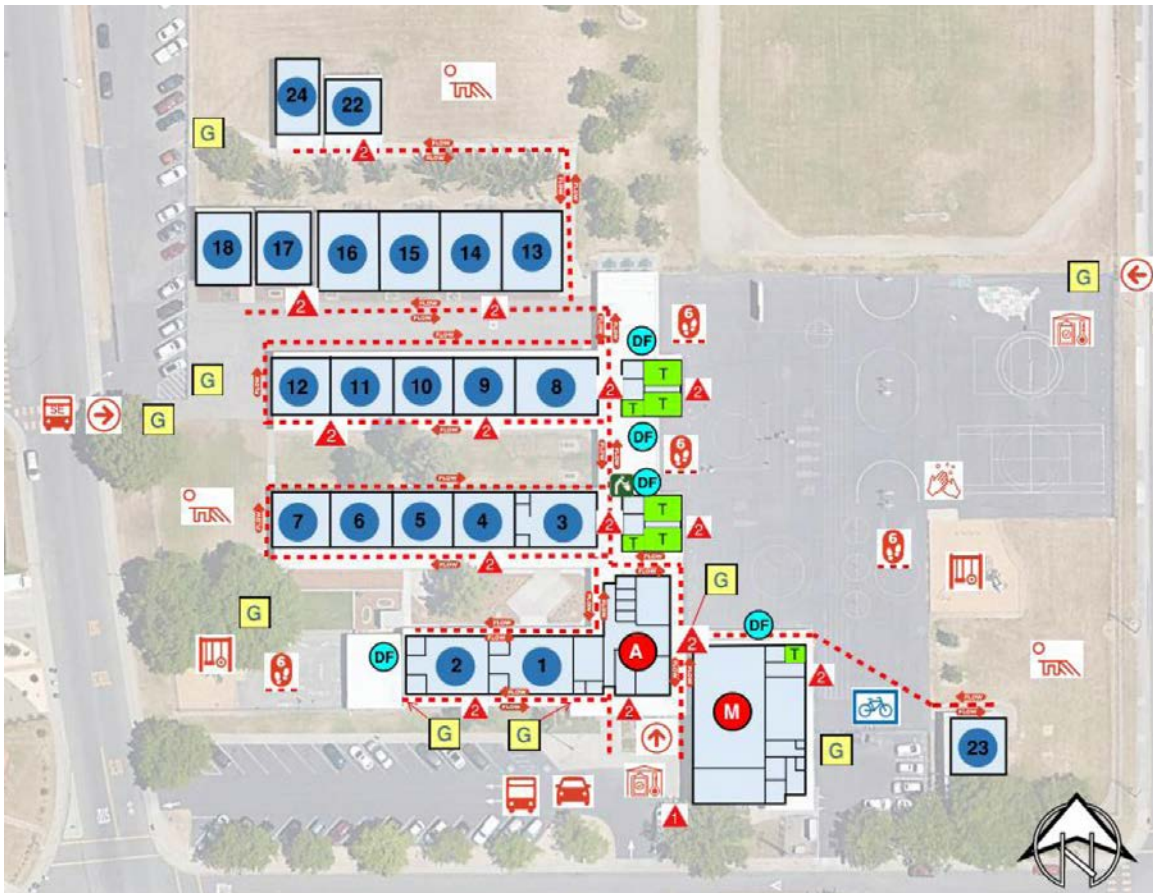
- Plexiglass has been installed at front counters and cafeteria lunch lines.
  - Currently upgrading to make front counter plexi units more permanent.
  - Using previous front counter plexi for library counters.





# Signage Planning

- Staff is working to finalize site specific signage plans and maps that can be utilized by site leaders.





# In Progress Dashboard Metrics

## Ventilation



- HVAC units: **COMPLETED and ONGOING**
  - Replaced with highest MERV-rated filters possible (AAB)
    - i. Contracted services are currently ensuring the highest rated filters are in place. The first complete filter change across the District was completed on DATE and the second filter change is scheduled to be completed by March 1, 2021. The third complete filter change is expected to take place during the month of June.
    - ii. MERV ratings system



# Ventilation

- The CDC recommends that a multi-layered approach is taken to address ventilation needs for mitigating COVID-19. The District has implemented the following recommendations:
  - Open all outside air dampers to pull 100% outside air rather than recirculated air.
  - Leave operable windows and doors open.
  - Reprogrammed HVAC units to operate with windows and doors open.
  - Change filters 3 more more times per year rather than the standard once per year.
  - Utilize portable air purifiers to further address ventilation needs.



# Ventilation

- On February 16, 2021, the Centers for Disease Control (CDC) issued guidance on returning to school.
- Until then, SCUSD Facilities Department followed “back to school” guidelines issued by:
  - The California Department of Public Health (CDPH)
  - The Centers for Disease Control (CDC)
  - American Society of Heating Refrigerating and Air-Conditioning Engineers (ASHRAE)
- CDC and CDPH both defer to ASHRAE for ventilation standards.
- In meeting various guidelines, a multi-layered approach was created to prepare for eventual reopening of schools.



# Multi-layered Approach to Ventilation

- HVAC solutions (in green), compared to CDPH, CDC, and ASHRAE standards.
- Note that SCUSD purchased portable units that were intended to meet HEPA standards using UV technology.
- Portable unit selection process is described in following slides.

Recommendations	CDPH	CDC	ASHRAE	SCUSD
Open doors and windows	X	X	X	X
Increase outside air	X	X	X	X
Open outside air dampers	X	X	X	X
Constant supply fan			X	X
Constant exhaust fan				X
Reprogram Demand-Control Ventilation units	X	X	X	X
MERV 13 or highest possible	X	X	X	X
Purge cycles		X	X	NA
Restroom exhaust fans		X	X	X
Ensure proper operation of HVAC units	X	X	X	X
Portable HEPA	X	X	X	*

\*Further details provided on slide 3



# HEPA Filtration & Portable Filtration

- ASHRAE states that MERV filters of 13 or greater should be installed in HVAC units
  - Filters are much thicker and heavier than typical MERV-8 filters
- District staff have replaced MERV-8 with MERV-13, wherever possible
- When MERV filters cannot meet the standard of MERV-13, ASHRAE states:
  - *“if an increase in filter MERV level cannot be accommodated using the existing air handling equipment fans and motors, consider using in room HEPA filter units in high occupancy of high bioburden (such as the building entry) spaces.”*



# Portable HEPA Filtration Equivalent

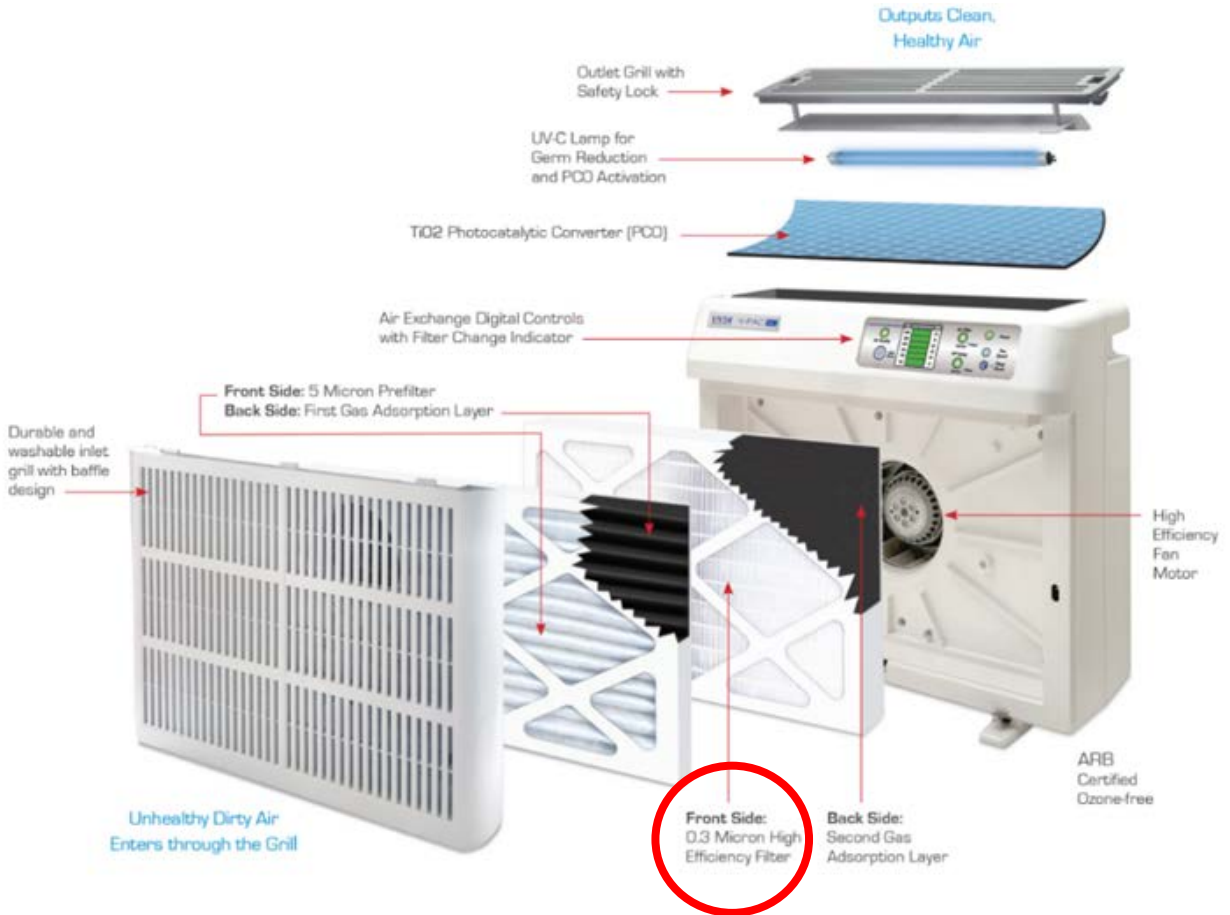
- District staff had several criteria to consider when selecting an “in room HEPA filter unit.”
  - Mitigation of the COVID virus
  - Large open classrooms with an average of 960 square feet
  - Inadequate electrical infrastructure in many parts of the District
  - Health and safety of staff tasked with replacing HEPA filters
  - Addressing VOCs caused by wildfire smoke
  - Improving general indoor air quality
  - Commercially available product with ability to fulfill a large order
- Johnson Controls was selected to provide the V-Pac SC, manufactured by Ultra Violet Devices, Inc. (UVDI).
- This unit provides HEPA equivalency, without the electrical demand.
  - Equivalent rating of MERV 14 or greater
  - Ultraviolet Germicidal Irradiation (UVGI) as endorsed by CDC
  - Photocatalytic Oxidation





# UVDI V-PAC SC

- Cost per unit: \$600.00.
- This commercial unit is designed to filtrate COVID-19 and wildfire smoke (not pollen, dust, and tobacco smoke).
- Pollen, dust, & tobacco are filtered by existing HVAC system.
- One UVDI unit filters up to 1,000 square feet.





# Next Steps - Ventilation

- Test the UVDI V-PAC SC unit in the Field to confirm that it meets ASHRAE HEPA filter standards.
  - Staff will hire an independent third-party testing agency to test the indoor air quality created by the unit in the field.
  - The test is intended to confirm that there are no by-products created by the unit exceeding OSHA health and safety standards.
  - The results will be provided in approximately three weeks.
- Upgrade to MERV-13 filtration at all District school sites
  - Staff will provide a third-party budget estimate for modernizing HVAC systems.
  - Time is needed to provide this data, due to complexities of individual systems and number of schools.
  - Staff will provide a plan and timeline for providing this information within two weeks.
- As we anticipate that modernizing all HVAC units in the District to meet MERV-13 filtration standards will be cost and/or schedule prohibitive:
  - The District is working to secure an estimate of the cost and timeline for upgrading electrical systems in schools so that additional portable filtration options can be considered over time.



# Final Thoughts - Ventilation

- Concerns about the product selected (and responses) include:
  - Clean Air Delivery Rate (CADR): the CADR is a residential metric created by the “Association of Home Appliance Manufacturers” to determine how quickly pollen, dust and tobacco smoke are removed from the air. It does not measure COVID-19 or wildfire smoke mitigation, two criteria (slide 32) developed by the District.
  - In order to meet the CARES Act spending deadline of December 2020, Staff reached out to 11 vendors and received 3 responses from commercial distributors. The selected unit provided the highest value based on the criteria (slide 32).
  - Less expensive units may have been available at the time, but those units were provided by household manufacturers and/or did not meet the criteria (slide 32).
  - Alternative commercial units are now available, but the purchasing process had started, and the original CARES Act funding deadline drove the timing of the purchase.



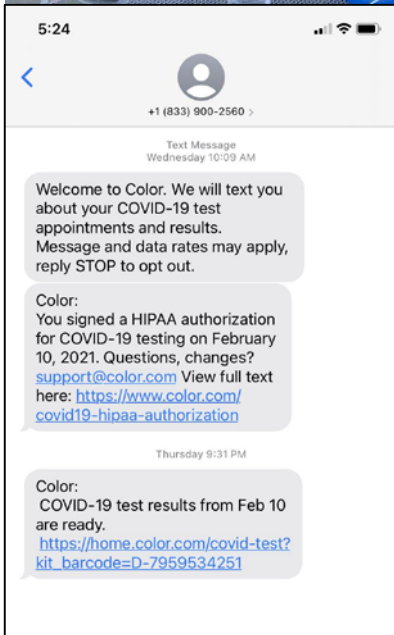
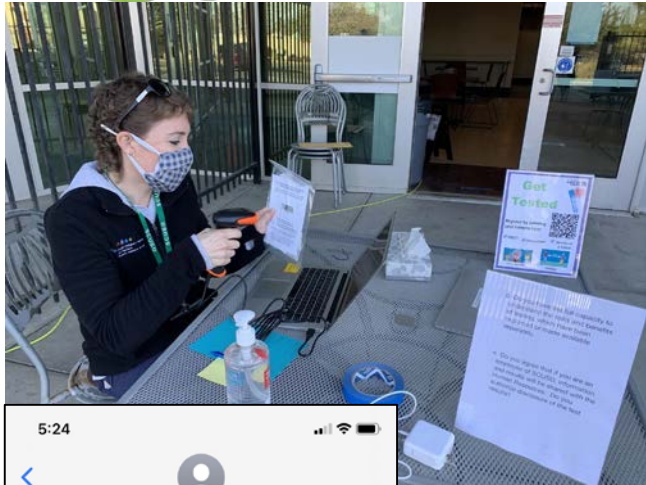
# In Progress Dashboard Metrics Testing



- Routine SCUSD on-site testing **IN PROGRESS**
  - Health Services will provide at least weekly testing at all Learning Hub sites and all district locations
  - First training/practice testing event was held on Feb 10th - expanding to all sites by end of March 2021.
  - PCR Testing – Results are available in 24-48 hours
  - Rapid Antigen Testing – Results in 15 minutes.



# In Progress Dashboard Metrics Testing



**Dashboard – HR Data on Re-opening – February Data  
2/12/21**

	Plans to Physically Attend	Plans to Physically Attend with Assistance	Plans to Remotely Attend	Does Not Plan to Attend
Overall Response Rate 51% (2780)	2324	253	183	18
SCTA	1056	132	124	10
SEIU	783	76	45	3
Teamsters	52	5	0	4
Teamsters Classified Supervisors	18	0	0	0
UPE	97	14	0	0
Classroom Teachers*	1004	130	119	8
Clerical Office Staff	132	12	9	0
Site Assigned Staff	1382	172	136	11
Department Assigned Staff	942	81	47	7
EK-3 Teachers	287	34	31	1 (274 - no responses)
Elementary Sites	725	81	76	6
Middle School Sites	189	17	18	2
K-8 Sites	166	24	11	1
Secondary Sites	302	50	31	2
Nutrition Services	161	2	0	1
Transportation	17	3	2	0

\*Includes Adult Ed, Child Development, Pre-school teachers



## Prepared to Meet the Needs of our Learners

- **Essential Standards/Scope and Sequence**
- **Universal Design for Learning**
  - Creating expert learners through individual strength access
  - Barrier free assessments, methods, materials
  - Anti-racism and UDL
- **Data Based Decision Making**
  - Cohort 1 schools leading the way
- **Anti-racist professional learning through EPOCH**
  - Independent learning and small group reflection
  - Nine Modules



## Anti-Racism



- Becoming Racially and Ethnically Conscious
- The Impact of Microaggressions
- What is Implicit Bias
- Creating Cultural Competency
- Supporting Student Empowerment
- Debiasing Our Thoughts and Actions
- Culturally Relevant Pedagogy as a Lens for Equity
- Our Role in Confronting and Overcoming Systemic Oppression
- Exploring Issues of Privilege and Entitlement





*return*  
**to LEARN**

## Learning Model and Phase In

- Distance Learning will remain an option for families by choice (C)
- In-Person Concurrent Model (A/B)
  - A combination of in-classroom (two days per week) and at home distance learning
  - Students keep their same teacher(s)

# Elementary Learning Model

	<b>Monday</b>	<b>Tuesday</b>	<b>Wednesday</b>	<b>Thursday</b>	<b>Friday</b>
<b>In person at school</b>	Full DL Day	Group A	Group B	Group A	Group B
<b>Distance learning from home</b>	Group A Group B Group C	Group B Group C	Group A Group C	Group B Group C	Group A Group C
<b>Learning Hubs*</b>	Group D	Group D	Group D	Group D	Group D

- 3 hours of student instruction
- Tues-Fri: Full day live instruction. Concurrent teaching of students in person and students at home.
- Monday: Distance learning for all. Time for both whole group synchronous instruction and targeted small group instruction. Collaborative Time for teachers.
- Staff is currently analyzing whether Learning Hubs could continue based on possible facilities constraints

# Secondary Model

	<b>Monday (periods 1-6)</b>	<b>Tuesday (Periods 1,3,5)</b>	<b>Wednesday (Periods 1,3,5)</b>	<b>Thursday (Periods 2,4,6)</b>	<b>Friday (Periods 2,4,6)</b>
<b>In person at school</b>	Full DL Day	Group A	Group B	Group A	Group B
<b>Distance learning from home</b>	Group A Group B Group C	Group B Group C	Group A Group C	Group B Group C	Group A Group C

- Tues-Fri: Full day live instruction. Concurrent teaching of students in person and students at home.
- Monday: Distance learning for all. Time for both whole group synchronous instruction and targeted small group instruction. Collaborative Time for teachers.



# Models in Our Nearby Districts

District	Schedule Model	Full DL Day/Option	Student Synchronous/in person Per Day
Sac City Unified	A/B Model	Yes/Yes	3 hours
Natomas Unified	A/B Model	No/Yes	3 hours
San Juan Unified	A/B Model	Yes/Yes	2.5 hours(k-8) 3 hours (9-12)
Twin Rivers Unified	A/B Model	Yes/Yes	3 hours
Elk Grove Unified	A/B Model	Yes/Yes	2 hours (TK - 1) 3 hours (2-12)



*return*  
**to LEARN**

## Learning Model and Phase In

- Recommended Phased-in implementation of the In-Person Concurrent Model
  - Weeks 1-2, March 22-26; April 5-7: All staff would return in order to prepare to support students
  - Spring Break: March 29-April 2
  - Weeks 3-4, April 8th: Return of all Pre K-3 students and all K-6 Special Day Classes students
  - Week 5, April 15th: Return of all 4th-6th grade students
  - Assuming Sacramento County moves to Red Tier all 7-12th grade students return no later than May 6th



# Questions